



Brant County Attendance Boundary Review: Committee Meeting #1

Brant Haldimand Norfolk Catholic District School Board

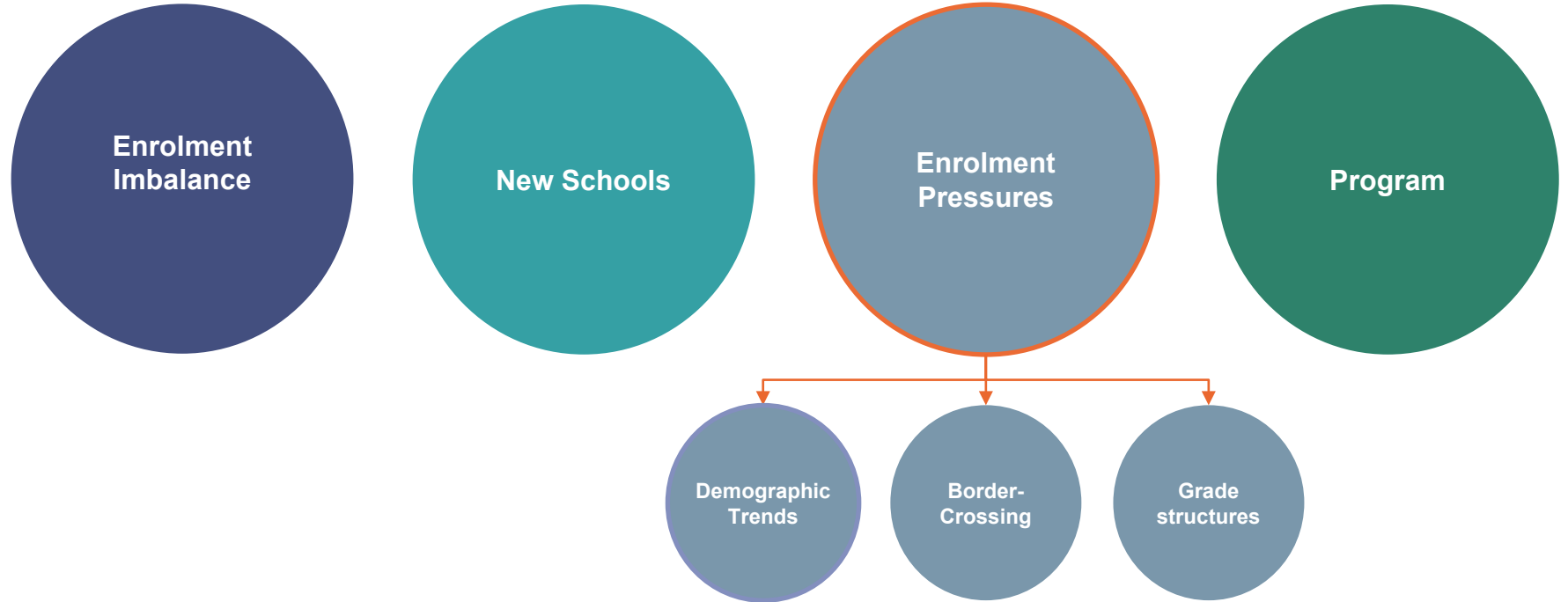
June 15th, 2023

Committee Mandate



- Work collaboratively to examine the initial boundary options generated by Senior Administration based on the projections and data.
- Provide the detailed feedback on the initial options, request modifications or suggest additional options.
- Determine one or more preferred options to be presented for public consultation.
- Parent representatives speak on behalf of all students, regardless of school, program, or grade.

Attendance Area Change Drivers



Brant County Attendance Boundary Review: Why a Review?

FOCUS: SCHOOL UTILIZATIONS & SCHOOL BOUNDARIES



- Schools (collectively) in the Brant County are operating with high utilizations and in many instances, enrolment is well above the permanent capacity of the school;
- Holy Family CS and Sacred Heart (Paris) CS are both operating at ~133% utilization of permanent capacity and requires several portables to accommodate enrolment. Blessed Sacrament CS is also operating above capacity at ~109%. Enrolments at all three schools are projected to continue to increase. St. Theresa CS is operating at ~90% utilization of permanent capacity and expected to remain around 80-90% utilized.
- 4 schools have been identified for this review – Blessed Sacrament CS, Holy Family CS, Sacred Heart (Paris) CS, and St. Theresa CS.

Possible Outcomes, Limitations and Considerations



Outcomes of the Attendance Area Review:

Implement boundary adjustments to balance and improve school utilizations to make the best use of school board resources (spaces) and improve overall student outcomes by:

- Utilizing excess capacity in one facility to alleviate over capacity in another to better meet program needs for all students
- Creating opportunities to better serve all students
- Reduce the need for portable classrooms

Limitations & Considerations:

School size, school location relative to existing and future students, travel time, walking distances, transportation, property size, Ministry of Education benchmarks and policies, and BHNCD SB policies and procedures.

Consideration should also be given to staffing requirements and space, parking etc.

Transitional provisions and legacy agreements and associated impacts, should also be considered as part of any final scenarios and recommendations.

Current Situation

Demographics – Brant County (Less the City of Brantford)



Population Data	2001 Census	2006 Census	2011 Census	2016 Census	2021 Census	2001-2021	
						Absolute Change	% Change
Total Population	26,516	29,488	31,142	32,132	35,263	8,746	33.0%
Pre-School Population (0-3)	1,111	1,281	1,404	1,340	1,373	261	23.5%
Elementary School Population (4-13)	3,744	3,848	3,661	3,812	4,214	470	12.6%
Secondary School Population (14-18)	2,002	2,141	2,064	1,921	1,983	-19	-0.9%
Population Over 18 Years of Age	19,659	22,219	24,013	25,059	27,693	8,033	40.9%
<i>Females Aged 25-44</i>	3,588	3,709	3,647	3,650	4,068	480	13.4%
Dwelling Unit Data	2001 Census	2006 Census	2011 Census	2016 Census	2021 Census	2001-2021	
						Absolute Change	% Change
Total Occupied Dwellings:	9,592	10,938	11,762	12,192	13,335	3,743	39.0%
Total Population/Dwelling:	2.76	2.70	2.65	2.64	2.64	-0.12	-4.3%
Elementary Pop./Dwelling:	0.39	0.35	0.31	0.31	0.32	-0.07	-19.0%
Secondary Pop./Dwelling:	0.21	0.20	0.18	0.16	0.15	-0.06	-28.7%

Source: Census DA SYA 2001-2021

Current Situation

Historical and Projected Enrolments and Utilizations



School Name	On-The-Ground Capacity	Historical				Projected		
		2011/ 2012	2016/ 2017	2020/ 2021	2021/ 2022	2022/ 2023	2027/ 2028	2032/ 2033
Blessed Sacrament	236	142	183	227	230	257	297	276
Holy Family	164	152	138	198	202	218	295	382
Sacred Heart (Paris)	420	203	276	405	477	558	830	1,026
St. Theresa	210	152	173	167	176	189	185	172
Total	1,030	649	770	997	1,085	1,222	1,606	1,855

School Name	On-The-Ground Capacity	Historical				Projected		
		2011/ 2012	2016/ 2017	2020/ 2021	2021/ 2022	2022/ 2023	2027/ 2028	2032/ 2033
Blessed Sacrament	236	60%	78%	96%	97%	109%	126%	117%
Holy Family	164	93%	84%	121%	123%	133%	180%	233%
Sacred Heart (Paris)	420	48%	66%	96%	114%	133%	198%	244%
St. Theresa	210	72%	82%	80%	84%	90%	88%	82%
Total	1,030	63%	75%	97%	105%	119%	156%	180%

Current Situation

Enrolment and Utilization by Program: October 31, 2022 Enrolments



School	OTG	Total RT	Total FI	Total Enrolment	Utilization with FI	Utilization without FI
Blessed Sacrament	236	257	0	257	109%	109%
Holy Family	164	218	0	218	133%	133%
Sacred Heart (Paris)	420	377	181	558	133%	90%
St. Theresa	210	189	0	189	90%	90%
Total	1,030	1,041	181	1,222	119%	101%

CURRENT SITUATION

Border Crossing



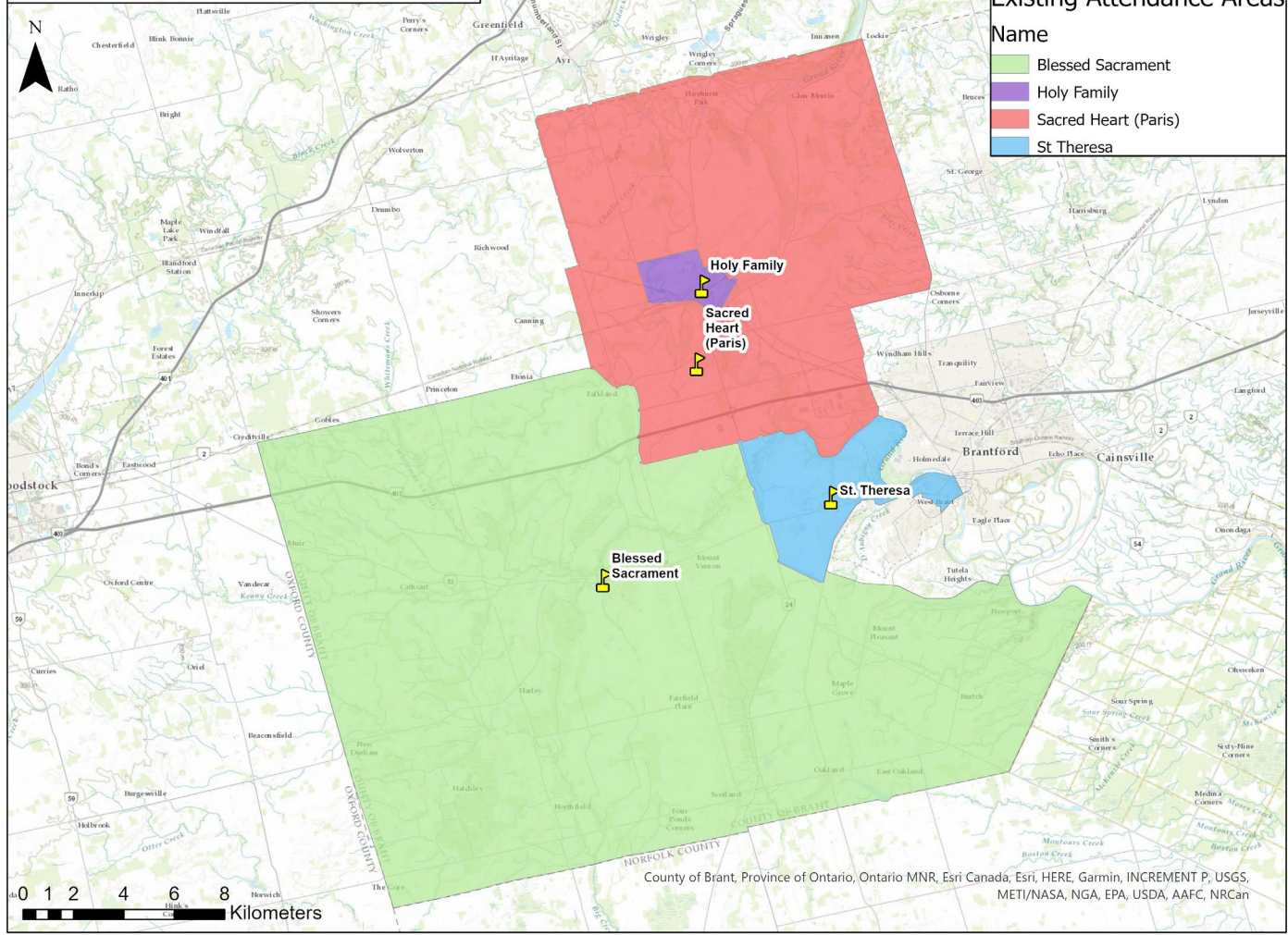
Attending School	Border-Crossing “In” # of students from other school area, attending this school	Border-Crossing “Out” # of students from this school area, attending elsewhere	Border-Crossing “Net”
Blessed Sacrament K - 8	16	9	7
Holy Family K - 8	10	6	4
Sacred Heart K - 8 (Paris)	32	9	23
St Theresa K - 8	19	3	16
Total	77	27	50

- 9 Sacred Heart CS students reside in the Blessed Sacrament boundary, 6 reside in the Holy Family boundary, 5 in the St. Leo boundary, 4 in the Our Lady of Providence boundary, 5 reside out of district, etc.
- 13 St. Theresa’s CS students reside in the St. Basil boundary

Existing School Attendance Areas Brant County (Less the City of Brantford)

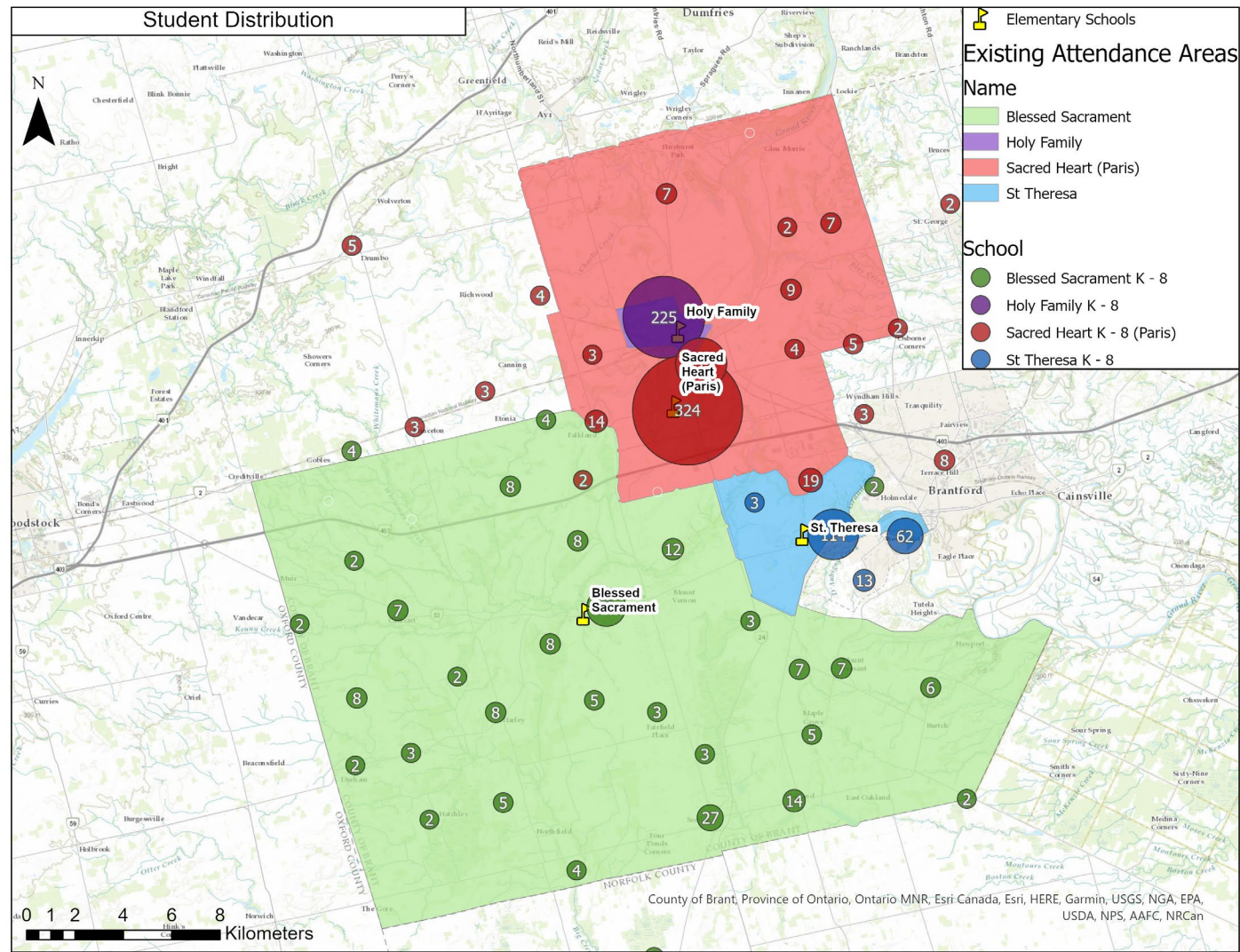
Elementary Schools Existing Attendance Areas

- Name
- Blessed Sacrament
 - Holy Family
 - Sacred Heart (Paris)
 - St. Theresa



Map of Existing Attendance Boundaries

Student Distribution



NEXT STEPS



- Committee members to complete short survey regarding the first committee meeting and initial perspectives on this review (online)
- Committee members can submit questions or comments to brantcounty@bhncdsb.ca
- Develop and present alternative attendance boundary scenarios for discussion at next Committee meeting: Fall of 2023
- Public meeting: Fall of 2023
- Prepare and present final options to Trustees for approval in the Fall of 2023

QUESTIONS/COMMENTS?