

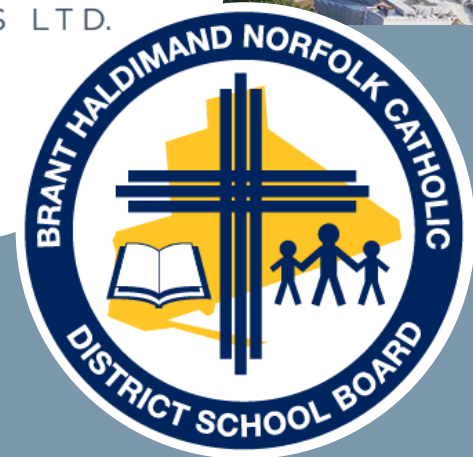


 **Watson  
& Associates**  
ECONOMISTS LTD.

## Secondary Attendance Boundary Review : Committee Meeting #2

---

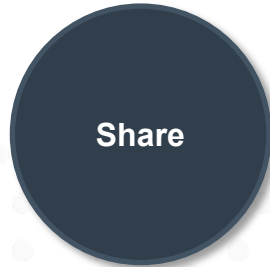
Brant Haldimand Norfolk Catholic District School Board  
October 1, 2025



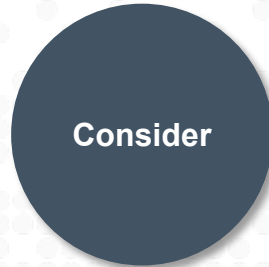


## The purpose of Committee Meeting # 2 is to:

- **Share information, data, and ideas** on possible attendance boundary options in advance of engaging the public; and,
- Provide Committee Members the opportunity to **ask questions and offer feedback**.



Role of  
Administration and  
Consultant Team



Role of  
Committee Members

# Refresher

Assumption  
College School  
Brantford

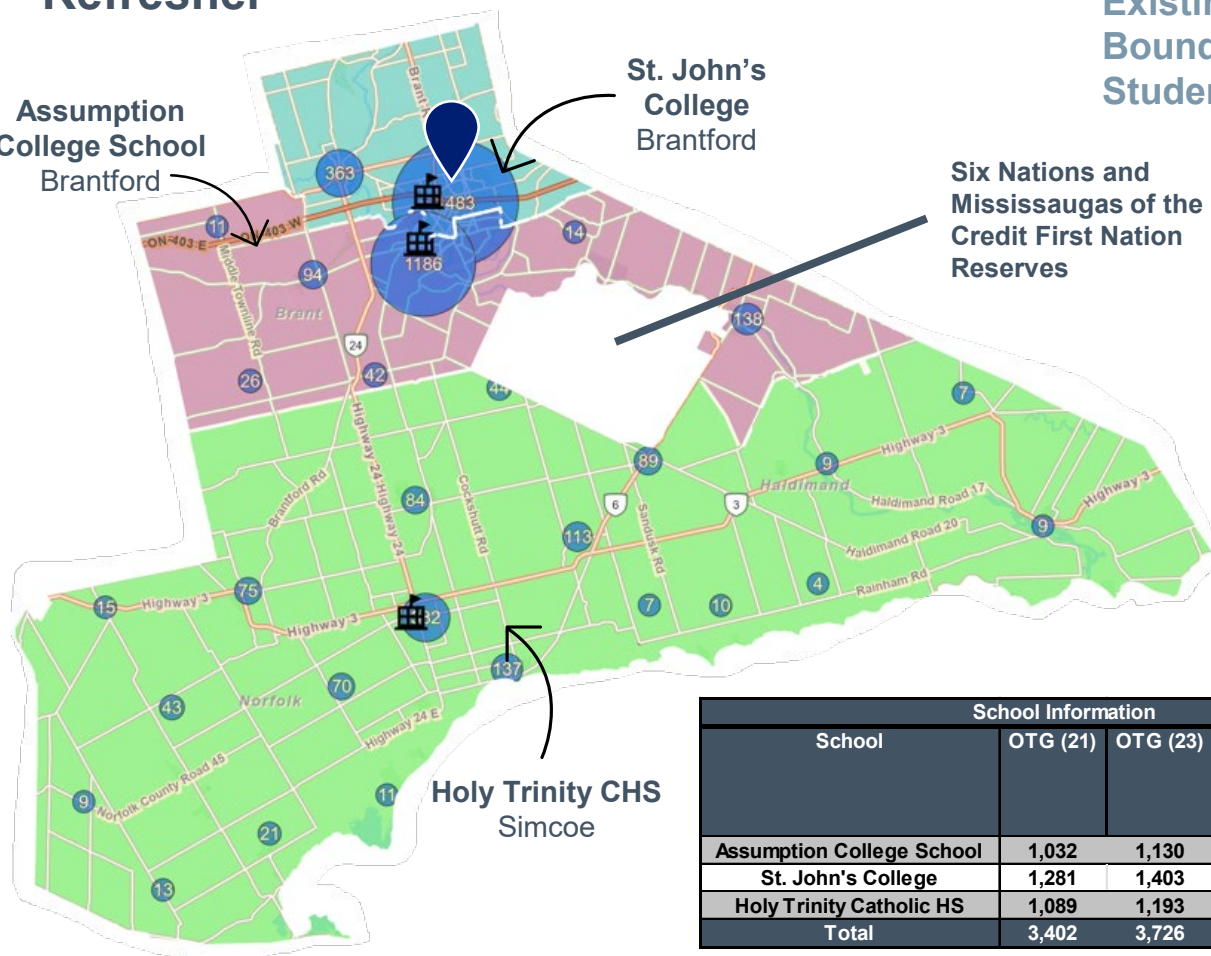
St. John's  
College  
Brantford

Six Nations and  
Mississaugas of the  
Credit First Nation  
Reserves

New St. Padre  
Pio CSS  
Brantford

Holy Trinity CHS  
Simcoe

## Existing Attendance Boundaries and October 2024 Student Distribution



School Information					2024			
School	OTG (21)	OTG (23)	Portables	OTG Incl. Port. OTG (23)	Enrol. (Oct)	Utiliz. %	Utiliz. % w/ Port	Surplus/ Deficit Space
Assumption College School	1,032	1,130	21	1,613	1,865	165%	116%	-735
St. John's College	1,281	1,403	9	1,610	1,405	100%	87%	-2
Holy Trinity Catholic HS	1,089	1,193		1,193	981	82%	82%	212
Total	3,402	3,726	30	4,416	4,251	114%	96%	-525

# Current Situation

## Historical and Projected Enrolments and Facility Utilization by Review Area



School Information					2024				5 Year				10 Year			
School	OTG (21)	OTG (23)	Portables	OTG Incd. Port. OTG (23)	Enrol. (Oct)	Utiliz. %	Utiliz. % w/ Port	Surplus/ Deficit Space	Enrol. (Oct)	Utiliz. %	Utiliz. % w/ Port	Surplus/ Deficit Space	Enrol. (Oct)	Utiliz. %	Utiliz. % w/ Port	Surplus/ Deficit Space
Assumption College School	1,032	1,130	21	1,613	1,865	165%	116%	-735	2,354	208%	146%	-1,224	2,789	247%	173%	-1,659
St. John's College	1,281	1,403	9	1,610	1,405	100%	87%	-2	1,522	108%	95%	-119	1,745	124%	108%	-342
Holy Trinity Catholic HS	1,089	1,193		1,193	981	82%	82%	212	1,197	100%	100%	-5	1,267	106%	106%	-74
New St. Padre Pio	1,257	1,377		1,377	-	-		-	-	-	-	1,377	-	-	-	1,377
Total	4,659	5,103	30	5,793	4,251	114%	96%	-525	5,073	99%	88%	29	5,801	114%	100%	-699

Note: Utilization calculated using OTG loaded at 23.

Source: Current enrolment derived from official October 31, 2024 headcounts.

**Enrol.** = Enrolment  
**Port** = Portables  
**OTG** = On-the-ground capacity  
**Utiliz. %** = Utilization %  
**Utiliz. % w/ Port.** = Utilization with Portables

# Current Situation

## Snapshot: Students Returned to Home Boundary



Attending School	OTG	Current Enrolment	Current Utilization	Current Portables	Students Returned Enrolment	Students Returned Utilization	Portables Needed*
Assumption College School	1,130	1,882	167%	21	1,818	161%	30
St. John's College	1,403	1,413	101%	9	1,392	99%	0
Holy Trinity Catholic High School	1,193	1,003	84%	0	998	84%	0
<b>Total</b>	<b>3,726</b>	<b>4,298</b>	<b>115%</b>	<b>30</b>	<b>4,208</b>	<b>113%</b>	<b>30</b>

School	In	Out	Net (In minus Out)
Assumption College School	151	87	64
St. John's College	90	69	21
Holy Trinity Catholic High School	14	9	5
<b>Total</b>	<b>255</b>	<b>165</b>	<b>90</b>

OTG loading at 23 students per classroom.

Portables Needed calculated by subtracting OTG from existing students and dividing by 23 (1 classroom).

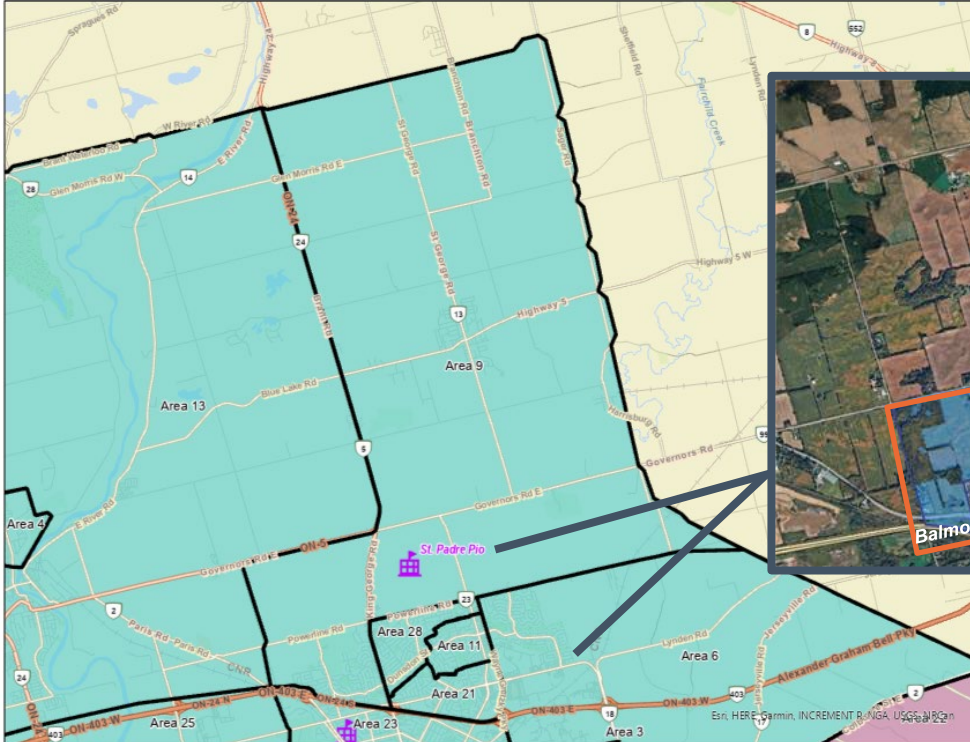
Source: Current enrolment and students returned derived from October 2024 student plots.



# Current Situation

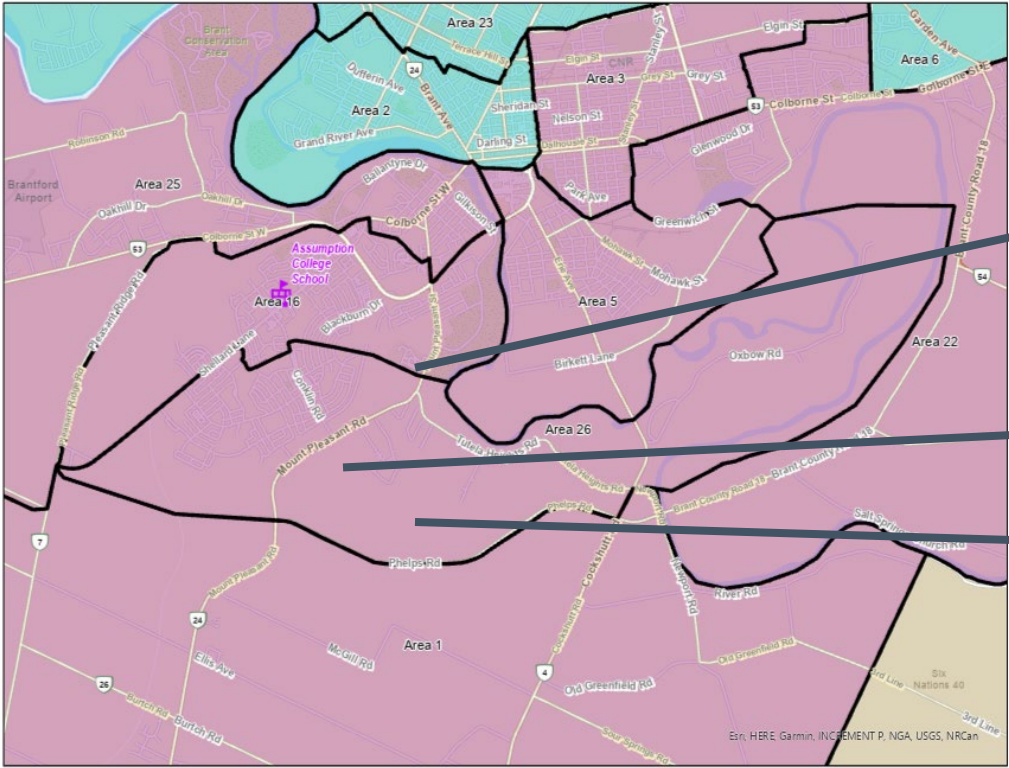
Growth Areas – St. John's College Boundary (Area 6 and Area 9)

Powerline West, Central and East Block Plans, Balmoral Block Plan, & Lynden Garden Block Plan



# Current Situation

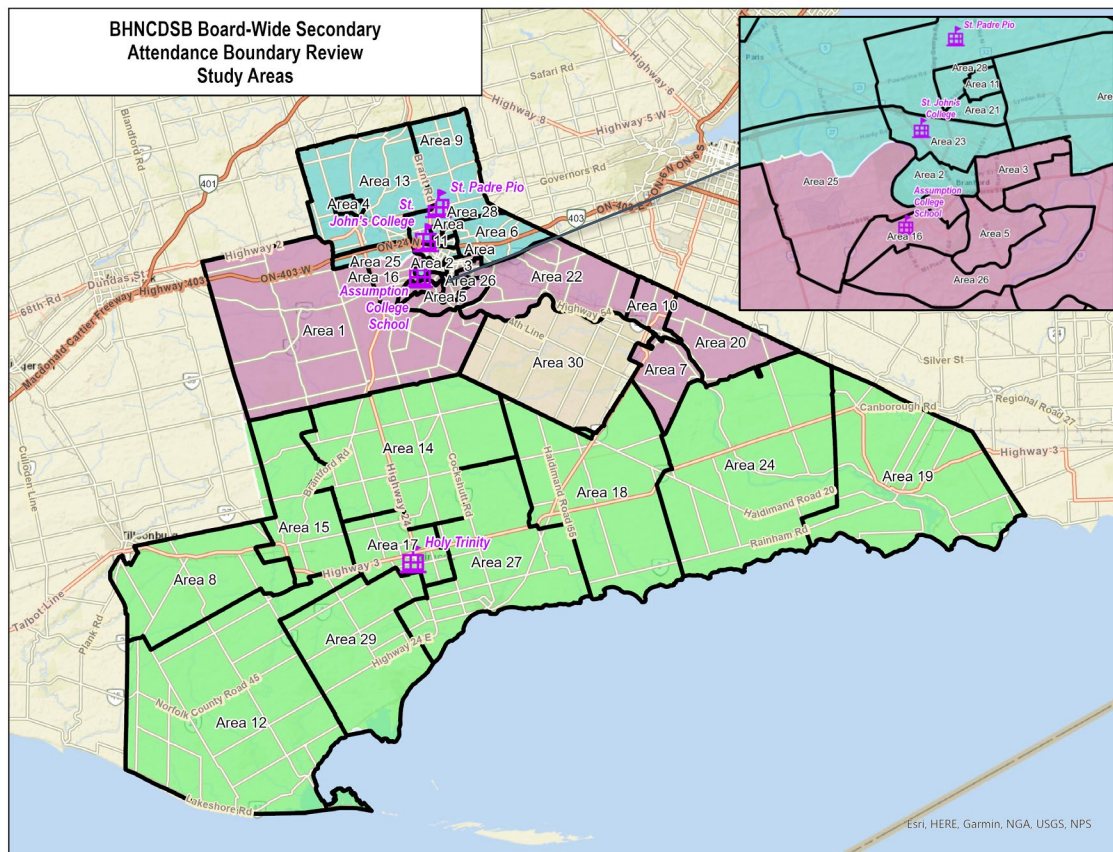
Growth Areas – Assumption College Boundary (Area 16 and Area 26)  
Tutela Heights Block Plans





# Secondary Attendance Boundary Review

## Existing Attendance Boundaries and Study Areas



School	Study Areas That Make Up Boundary
Assumption College School	<ul style="list-style-type: none"> <li>Area 1 – Blessed Sacrament</li> <li>Area 3 – Holy Cross</li> <li>Area 5 – Madonna Della Libera</li> <li>Area 7 – Notre Dame (Caledonia)</li> <li>Area 10 – Pope Francis</li> <li>Area 16 – St. Gabriel</li> <li>Area 20 – St. Patrick (Caledonia)</li> <li>Area 22 – St. Peter</li> <li>Area 25 – St. Theresa</li> <li>Area 26 – St. Basil</li> </ul>
Holy Trinity Catholic High School	<ul style="list-style-type: none"> <li>Area 8 – Our Lady of Fatima (Courtland)</li> <li>Area 12 – Sacred Heart (Langton)</li> <li>Area 15 – St. Frances Cabrini</li> <li>Area 17 – St. Joseph</li> <li>Area 18 – St. Mary (Hagersville)</li> <li>Area 19 – St. Michael's (Dunnville)</li> <li>Area 24 – St. Stephen's</li> <li>Area 27 – St. Cecilia's</li> <li>Area 29 – St. Michael's (Walsh)</li> </ul>
St. John's College School	<ul style="list-style-type: none"> <li>Area 2 – Christ the King</li> <li>Area 4 – Holy Family</li> <li>Area 6 – Notre Dame (Brantford)</li> <li>Area 9 – Our Lady of Providence</li> <li>Area 11 – Resurrection</li> <li>Area 13 – Sacred Heart (Paris)</li> <li>Area 21 – St. Patrick (Brantford)</li> <li>Area 23 – St. Pius</li> <li>Area 28 – St. Leo</li> </ul>
Six Nations and Mississaugas of the Credit First Nation Reserves	<ul style="list-style-type: none"> <li>Area 30</li> </ul>

Please refer to PDF of study areas by school attendance boundary.



# Secondary Attendance Boundary Review

## Preliminary Ideas for Consideration

### 1. Boundary Adjustment

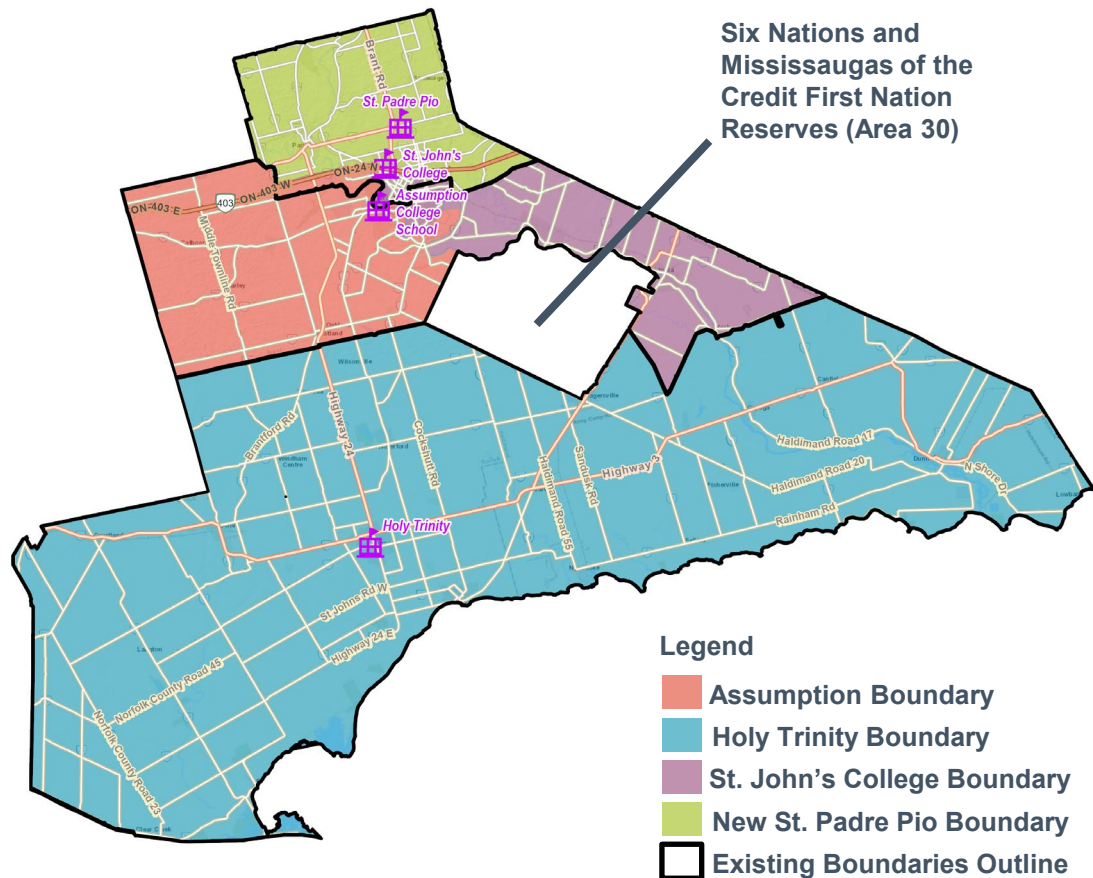
- ***Consultant believes there is potential to adjust the following areas (please refer to PDF of study areas by school attendance boundary):***

Focus Schools	Identified Challenge	Relief School(s)	Study Area(s) to Move
Assumption College School	Overcapacity with use of 21 portables on site	New St. Padre Pio CSS	<ul style="list-style-type: none"> <li>• Area 3 – Holy Cross</li> <li>• Area 5 – Madonna Della Libera</li> <li>• Area 7 – Notre Dame (Caledonia)</li> <li>• Area 10 – Pope Francis</li> <li>• Area 20 – St. Patrick (Caledonia)</li> <li>• Area 22 – St. Peter</li> </ul>
		St. John's CS	<ul style="list-style-type: none"> <li>• Area 3 – Holy Cross</li> <li>• Area 5 – Madonna Della Libera</li> <li>• Area 7 – Notre Dame (Caledonia)</li> <li>• Area 10 – Pope Francis</li> <li>• Area 20 – St. Patrick (Caledonia)</li> <li>• Area 22 – St. Peter</li> </ul>
		Holy Trinity CHS	<ul style="list-style-type: none"> <li>• Area 7 – Notre Dame (Caledonia)</li> <li>• Area 10 – Pope Francis</li> <li>• Area 20 – St. Patrick (Caledonia)</li> </ul>
St. John's College School	At capacity without use of 9 portables on site	New St. Padre Pio CSS	<ul style="list-style-type: none"> <li>• Area 4 – Holy Family</li> <li>• Area 6 – Notre Dame (Brantford)</li> <li>• Area 11 – Resurrection</li> <li>• Area 13 – Sacred Heart (Paris)</li> <li>• Area 21 – St. Patrick (Brantford)</li> <li>• Area 28 – St. Leo</li> </ul>
		Assumption CS	<ul style="list-style-type: none"> <li>• Area 2 – Christ the King</li> <li>• Area 4 – Holy Family</li> <li>• Area 13 – Sacred Heart (Paris)</li> </ul>

# Secondary Attendance Boundary Review

## Idea for Consideration 1a

School	Study Areas That Make Up Boundary
Assumption College School	<ul style="list-style-type: none"> <li>Area 1 – Blessed Sacrament</li> <li>Area 16 – St. Gabriel</li> <li>Area 25 – St. Theresa</li> <li>Area 26 – St. Basil</li> </ul>
Holy Trinity Catholic High School	<ul style="list-style-type: none"> <li>Area 8 – Our Lady of Fatima (Courtland)</li> <li>Area 12 – Sacred Heart (Langton)</li> <li>Area 15 – St. Frances Cabrini</li> <li>Area 17 – St. Joseph</li> <li>Area 18 – St. Mary (Hagersville)</li> <li>Area 19 – St. Michael's (Dunnville)</li> <li>Area 24 – St. Stephen's</li> <li>Area 27 – St. Cecilia's</li> <li>Area 29 – St. Michael's (Walsh)</li> </ul>
St. John's College School	<ul style="list-style-type: none"> <li>Area 2 – Christ the King</li> <li>Area 3 – Holy Cross</li> <li>Area 5 – Madonna Della Libera</li> <li>Area 7 – Notre Dame (Caledonia)</li> <li>Area 10 – Pope Francis</li> <li>Area 20 – St. Patrick (Caledonia)</li> <li>Area 22 – St. Peter</li> </ul>
New St. Padre Pio Catholic Secondary School	<ul style="list-style-type: none"> <li>Area 4 – Holy Family</li> <li>Area 6 – Notre Dame (Brantford)</li> <li>Area 9 – Our Lady of Providence</li> <li>Area 11 – Resurrection</li> <li>Area 13 – Sacred Heart (Paris)</li> <li>Area 21 – St. Patrick (Brantford)</li> <li>Area 28 – St. Leo</li> </ul>



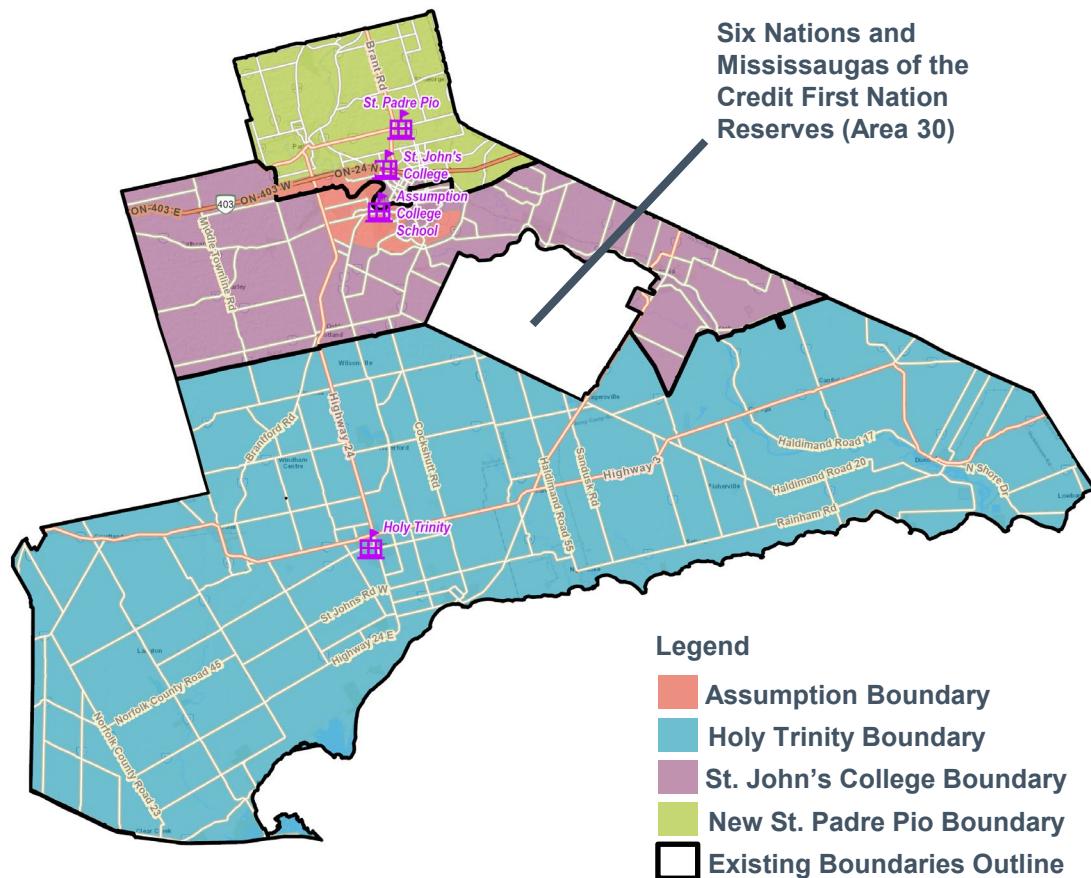




# Secondary Attendance Boundary Review

## Idea for Consideration 1b

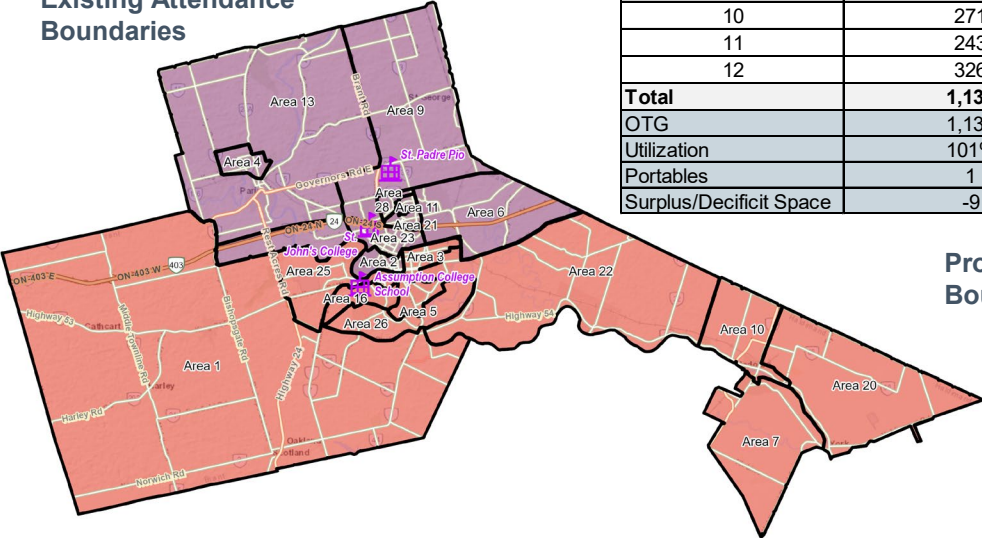
School	Study Areas That Make Up Boundary
Assumption College School	<ul style="list-style-type: none"> <li>Area 16 – St. Gabriel</li> <li>Area 25 – St. Theresa</li> <li>Area 26 – St. Basil</li> </ul>
Holy Trinity Catholic High School	<ul style="list-style-type: none"> <li>Area 8 – Our Lady of Fatima (Courtland)</li> <li>Area 12 – Sacred Heart (Langton)</li> <li>Area 15 – St. Frances Cabrini</li> <li>Area 17 – St. Joseph</li> <li>Area 18 – St. Mary (Hagersville)</li> <li>Area 19 – St. Michael's (Dunnville)</li> <li>Area 24 – St. Stephen's</li> <li>Area 27 – St. Cecilia's</li> <li>Area 29 – St. Michael's (Walsh)</li> </ul>
St. John's College School	<ul style="list-style-type: none"> <li>Area 1 – Blessed Sacrament</li> <li>Area 2 – Christ the King</li> <li>Area 3 – Holy Cross</li> <li>Area 5 – Madonna Della Libera</li> <li>Area 7 – Notre Dame (Caledonia)</li> <li>Area 10 – Pope Francis</li> <li>Area 20 – St. Patrick (Caledonia)</li> <li>Area 22 – St. Peter</li> </ul>
New St. Padre Pio Catholic Secondary School	<ul style="list-style-type: none"> <li>Area 4 – Holy Family</li> <li>Area 6 – Notre Dame (Brantford)</li> <li>Area 9 – Our Lady of Providence</li> <li>Area 11 – Resurrection</li> <li>Area 13 – Sacred Heart (Paris)</li> <li>Area 21 – St. Patrick (Brantford)</li> <li>Area 28 – St. Leo</li> </ul>



# Secondary Attendance Boundary Review

## Idea for Consideration 1b

### Existing Attendance Boundaries

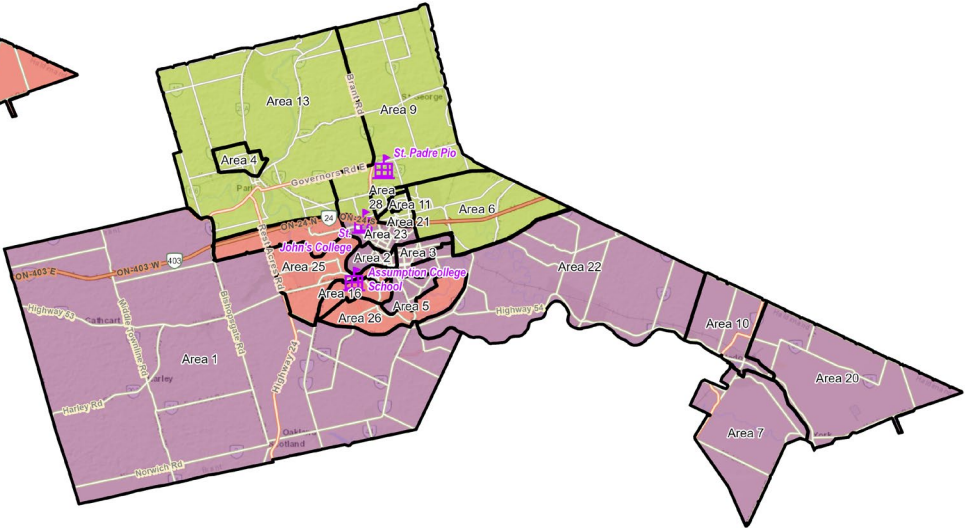


### Legend

- Assumption Boundary
- St. John's College Boundary
- New St. Padre Pio Boundary

Grade	Assumption	Holy Trinity	St. John's College	New St. Padre Pio
9	299	260	264	267
10	271	223	248	267
11	243	240	213	229
12	326	271	276	306
<b>Total</b>	<b>1,139</b>	<b>994</b>	<b>1,001</b>	<b>1,069</b>
OTG	1,130	1,193	1,403	1,377
Utilization	101%	83%	71%	78%
Portables	1	-9	-18	-14
Surplus/Decifit Space	-9	199	402	308

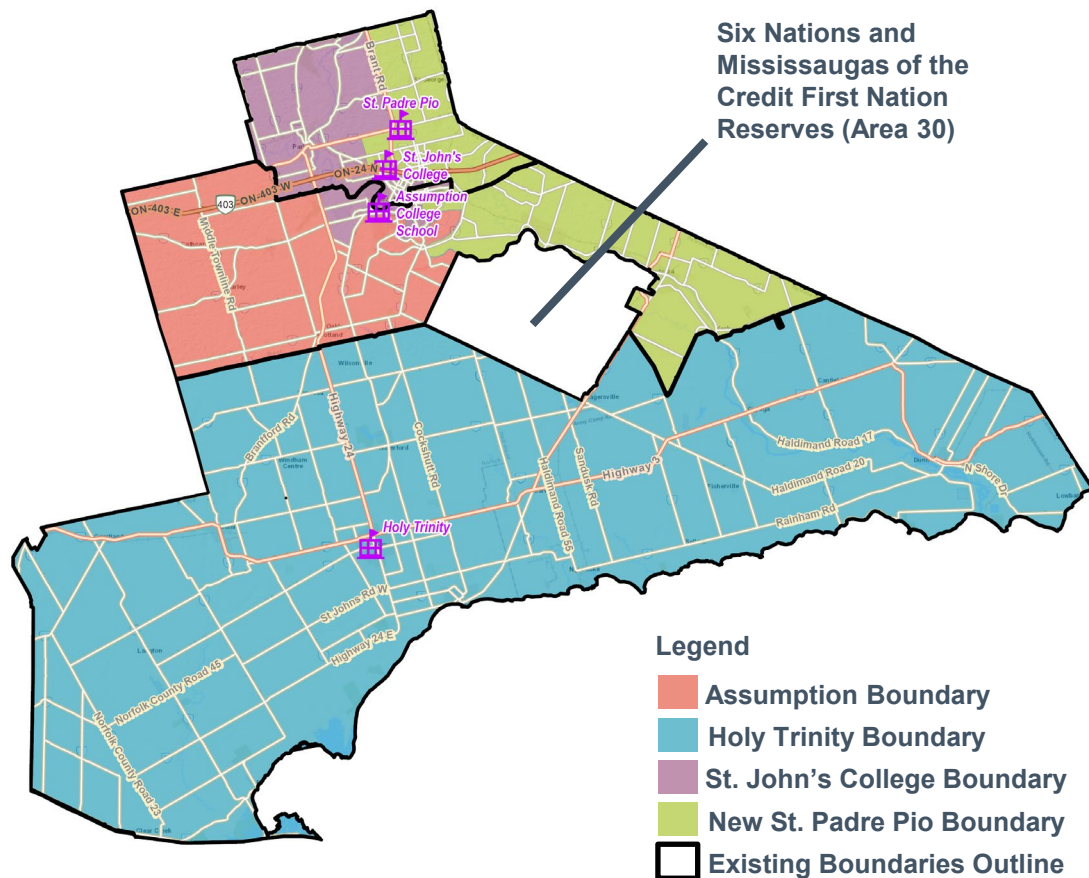
### Proposed Attendance Boundaries



# Secondary Attendance Boundary Review

## Idea for Consideration 2

School	Study Areas That Make Up Boundary
Assumption College School	<ul style="list-style-type: none"> <li>Area 1 – Blessed Sacrament</li> <li>Area 16 – St. Gabriel</li> <li>Area 25 – St. Theresa</li> <li>Area 26 – St. Basil</li> </ul>
Holy Trinity Catholic High School	<ul style="list-style-type: none"> <li>Area 8 – Our Lady of Fatima (Courtland)</li> <li>Area 12 – Sacred Heart (Langton)</li> <li>Area 15 – St. Frances Cabrini</li> <li>Area 17 – St. Joseph</li> <li>Area 18 – St. Mary (Hagersville)</li> <li>Area 19 – St. Michael's (Dunnville)</li> <li>Area 24 – St. Stephen's</li> <li>Area 27 – St. Cecilia's</li> <li>Area 29 – St. Michael's (Walsh)</li> </ul>
St. John's College School	<ul style="list-style-type: none"> <li>Area 2 – Christ the King</li> <li>Area 3 – Holy Cross</li> <li>Area 4 – Holy Family</li> <li>Area 5 – Madonna Della Libera</li> <li>Area 13 – Sacred Heart (Paris)</li> <li>Area 23 – St. Pius</li> <li>Area 25 – St. Theresa</li> </ul>
New St. Padre Pio Catholic Secondary School	<ul style="list-style-type: none"> <li>Area 6 – Notre Dame (Brantford)</li> <li>Area 7 – Notre Dame (Caledonia)</li> <li>Area 9 – Our Lady of Providence</li> <li>Area 10 – Pope Francis</li> <li>Area 11 – Resurrection</li> <li>Area 20 – St. Patrick (Caledonia)</li> <li>Area 21 – St. Patrick (Brantford)</li> <li>Area 22 – St. Peter</li> <li>Area 28 – St. Leo</li> </ul>







# Key Questions



- Which areas should make up the St. Padre Pio CSS boundary?
- Which areas does the committee feel are suitable/not suitable to move?
- Are there community connections to certain areas that may allow for a more appropriate boundary change?
- Attendance considerations for students from the Six Nations and Mississaugas of the Credit First Nation Reserves?

## Next Steps



- Committee members to complete short survey regarding the second committee meeting and perspectives on the preliminary ideas for consideration (online)
- Committee members can submit questions or comments to [boardwidesecundary@bhncdsb.ca](mailto:boardwidesecundary@bhncdsb.ca)
- Next Committee meeting: November 3, 2025
- Public meeting: January 12, 2026
- Prepare and present final options to Trustees for approval in Spring 2026





# QUESTIONS