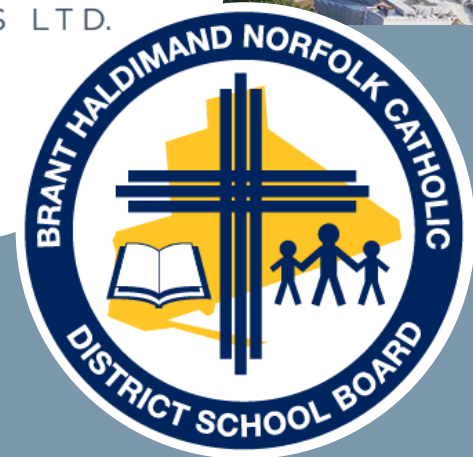




 **Watson
& Associates**
ECONOMISTS LTD.

Secondary Attendance Boundary Review : Committee Meeting #3

Brant Haldimand Norfolk Catholic District School Board
November 3, 2025



What We Heard

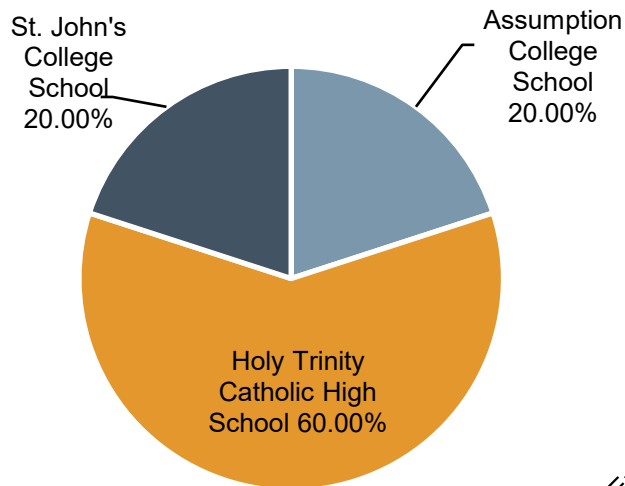
Committee Contributions

Survey #1 – What we heard...

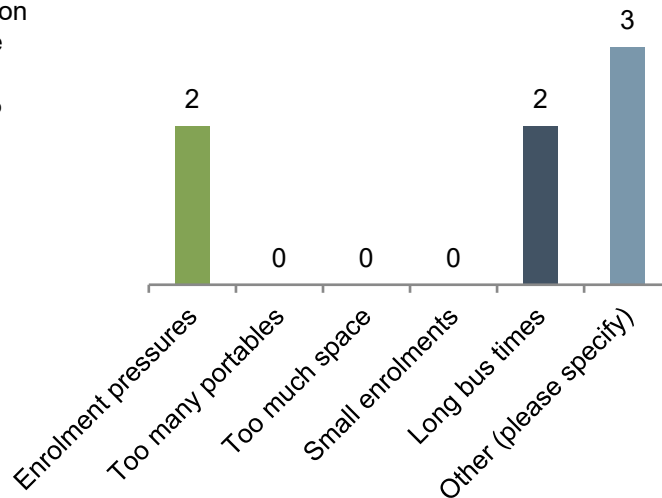
5 Total Responses



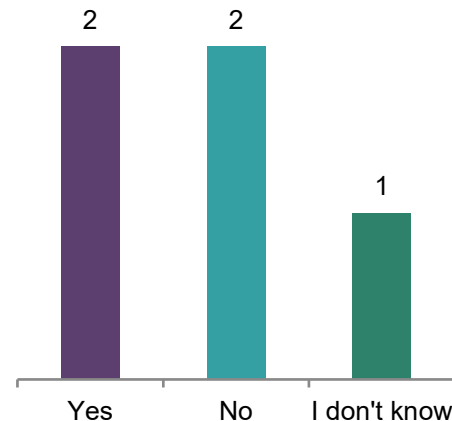
What School are you affiliated with:



What are some initial issues you see with the existing conditions at your school?



Do you feel there is too much traffic at your school during drop-off/pickup times?

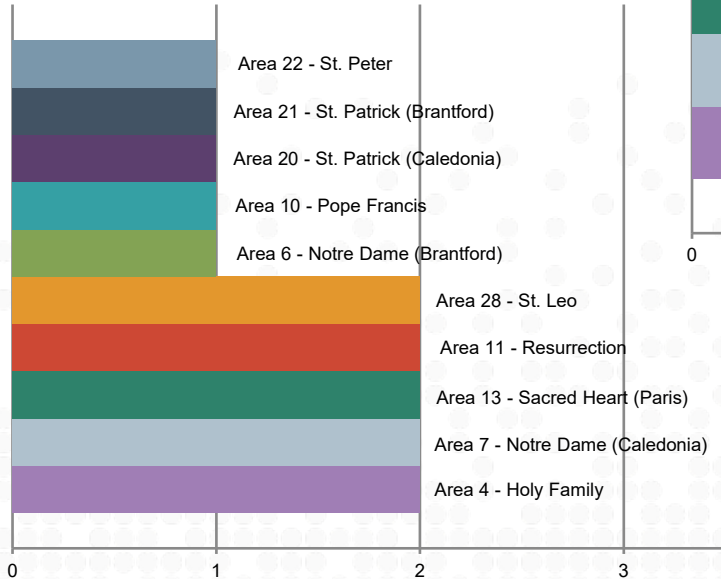


Committee Contributions

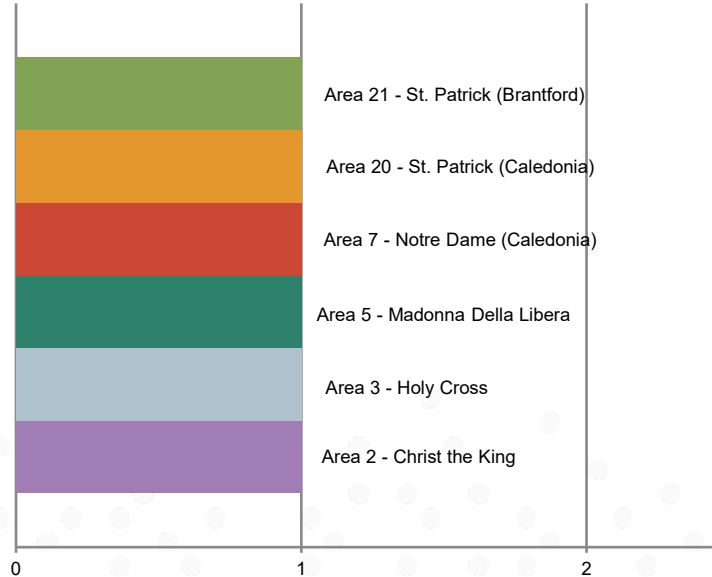
Survey #1 – What we heard...

5 Total Responses

Areas That Should Move



Areas That Should Not Move



Why Should Those Areas Move/Not Move?

- The areas proposed to move in Option 2 make the most sense
- Logically, distance, and projection-wise, it makes the most sense to move:
 - **Area 4**
 - **Area 6**
 - **Area 7**
 - **Area 10**
 - **Area 11**
 - **Area 13**
 - **Area 20**
 - **Area 21**
 - **Area 22**
 - **Area 28**



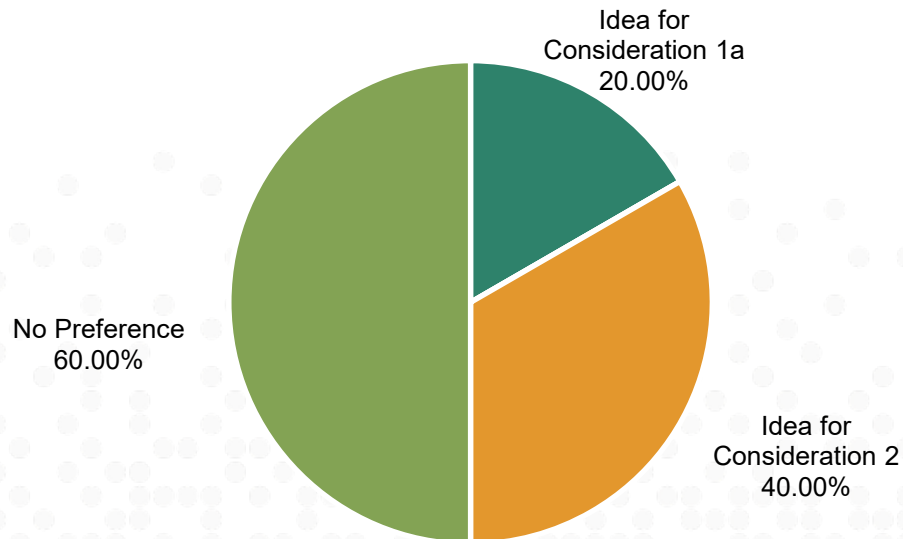
Committee Contributions

Survey #1 – What we heard...

5 Total Responses



Of the ideas for consideration, which do you prefer?



Why is that the preferred scenario?

- All seem appropriate for debate

Are there any unique circumstances surrounding your school and community that you feel Board staff and the consultant team should be aware of?

- Kids from rural areas may not do as well in cities as they are not used to them

Refresher: Current Situation

Refresher: Current Situation

Assumption
College School
Brantford

St. John's
College
Brantford

Six Nations and
Mississaugas of the
Credit First Nation
Reserves (but not
limited to)

Holy Trinity CHS
Simcoe

Existing Attendance Boundaries and October 2024 Student Distribution



New St. Padre
Pio CSS
Brantford

School Information					2024			
School	OTG (21)	OTG (23)	Portables	OTG Incl. Port. OTG (23)	Enrol. (Oct)	Utiliz. %	Utiliz. % w/ Port	Surplus/ Deficit Space
Assumption College School	1,032	1,130	21	1,613	1,865	165%	116%	-735
St. John's College	1,281	1,403	9	1,610	1,405	100%	87%	-2
Holy Trinity Catholic HS	1,089	1,193		1,193	981	82%	82%	212
Total	3,402	3,726	30	4,416	4,251	114%	96%	-525

Refresher: Current Situation

Historical and Projected Enrolments and Facility Utilization by Review Area



School Information					2024				5 Year				10 Year			
School	OTG (21)	OTG (23)	Portables	OTG Incd. Port. OTG (23)	Enrol. (Oct)	Utiliz. %	Utiliz. % w/ Port	Surplus/ Deficit Space	Enrol. (Oct)	Utiliz. %	Utiliz. % w/ Port	Surplus/ Deficit Space	Enrol. (Oct)	Utiliz. %	Utiliz. % w/ Port	Surplus/ Deficit Space
Assumption College School	1,032	1,130	21	1,613	1,865	165%	116%	-735	2,354	208%	146%	-1,224	2,789	247%	173%	-1,659
St. John's College	1,281	1,403	9	1,610	1,405	100%	87%	-2	1,522	108%	95%	-119	1,745	124%	108%	-342
Holy Trinity Catholic HS	1,089	1,193		1,193	981	82%	82%	212	1,197	100%	100%	-5	1,267	106%	106%	-74
New St. Padre Pio	1,257	1,377		1,377	-	-		-	-	-	-	1,377	-	-	-	1,377
Total	4,659	5,103	30	5,793	4,251	114%	96%	-525	5,073	99%	88%	29	5,801	114%	100%	-699

Note: Utilization calculated using OTG loaded at 23.

Source: Current enrolment derived from official October 31, 2024 headcounts.

Enrol. = Enrolment
Port = Portables
OTG = On-the-ground capacity
Utiliz. % = Utilization %
Utiliz. % w/ Port. = Utilization with Portables

Refresher: Current Situation

Snapshot: Students Returned to Home Boundary



Attending School	OTG	Current Enrolment	Current Utilization	Current Portables	Students Returned Enrolment	Students Returned Utilization	Portables Needed*
Assumption College School	1,130	1,882	167%	21	1,818	161%	30
St. John's College	1,403	1,413	101%	9	1,392	99%	0
Holy Trinity Catholic High School	1,193	1,003	84%	0	998	84%	0
Total	3,726	4,298	115%	30	4,208	113%	30

School	In	Out	Net (In minus Out)
Assumption College School	151	87	64
St. John's College	90	69	21
Holy Trinity Catholic High School	14	9	5
Total	255	165	90

OTG loading at 23 students per classroom.

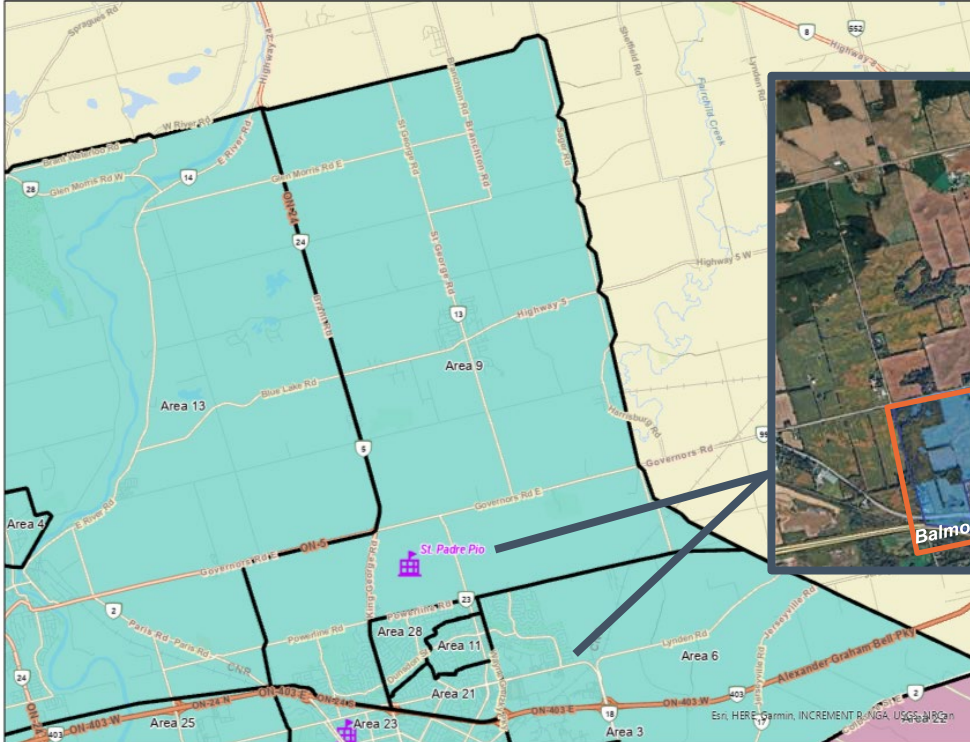
Portables Needed calculated by subtracting OTG from existing students and dividing by 23 (1 classroom).

Source: Current enrolment and students returned derived from October 2024 student plots.

Refresher: Current Situation

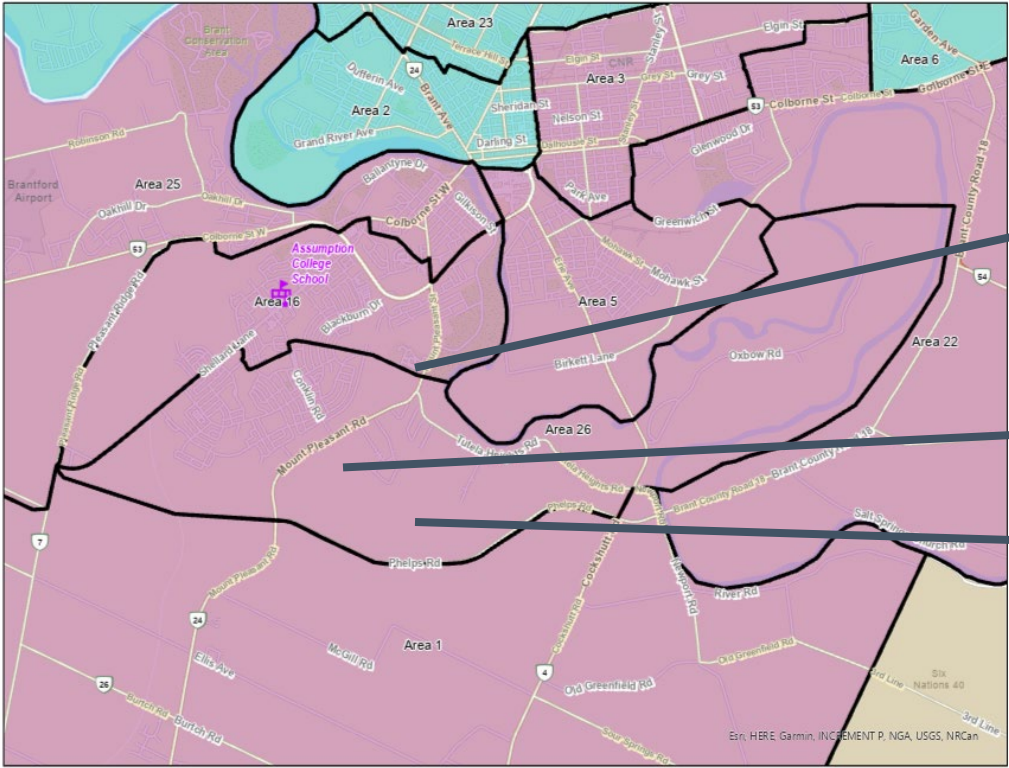
Growth Areas – St. John's College Boundary (Area 6 and Area 9)

Powerline West, Central and East Block Plans, Balmoral Block Plan, & Lynden Garden Block Plan



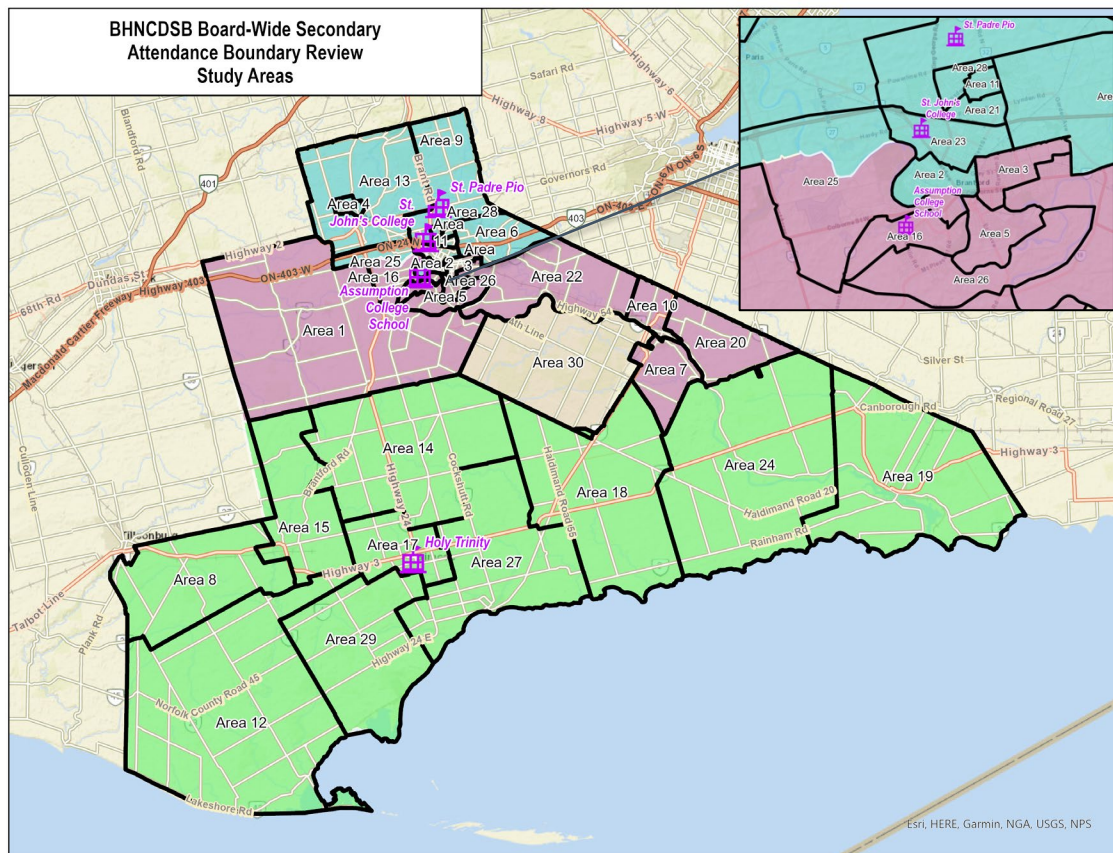
Refresher: Current Situation

Growth Areas – Assumption College Boundary (Area 16 and Area 26)
Tutela Heights Block Plans



Refresher: Current Situation

Existing Attendance Boundaries and Study Areas



School	Study Areas That Make Up Boundary
Assumption College School	<ul style="list-style-type: none"> Area 1 – Blessed Sacrament Area 3 – Holy Cross Area 5 – Madonna Della Libera Area 7 – Notre Dame (Caledonia) Area 10 – Pope Francis Area 16 – St. Gabriel Area 20 – St. Patrick (Caledonia) Area 22 – St. Peter Area 25 – St. Theresa Area 26 – St. Basil New SW Brantford School
Holy Trinity Catholic High School	<ul style="list-style-type: none"> Area 8 – Our Lady of Fatima (Courtland) Area 12 – Sacred Heart (Langton) Area 15 – St. Frances Cabrini Area 17 – St. Joseph Area 18 – St. Mary (Hagersville) Area 19 – St. Michael's (Dunnville) Area 24 – St. Stephen's Area 27 – St. Cecilia's Area 29 – St. Michael's (Walsh)
St. John's College School	<ul style="list-style-type: none"> Area 2 – Christ the King Area 4 – Holy Family Area 6 – Notre Dame (Brantford) Area 9 – Our Lady of Providence Area 11 – Resurrection Area 13 – Sacred Heart (Paris) Area 21 – St. Patrick (Brantford) Area 23 – St. Pius Area 28 – St. Leo New Paris School
Six Nations and Mississaugas of the Credit First Nation Reserves (but not limited to)	<ul style="list-style-type: none"> Area 30

Please refer to PDF of study areas by school attendance boundary.

Refresher: Preliminary Ideas for Consideration

Secondary Attendance Boundary Review

Refresher: Preliminary Ideas for Consideration

1. Boundary Adjustment

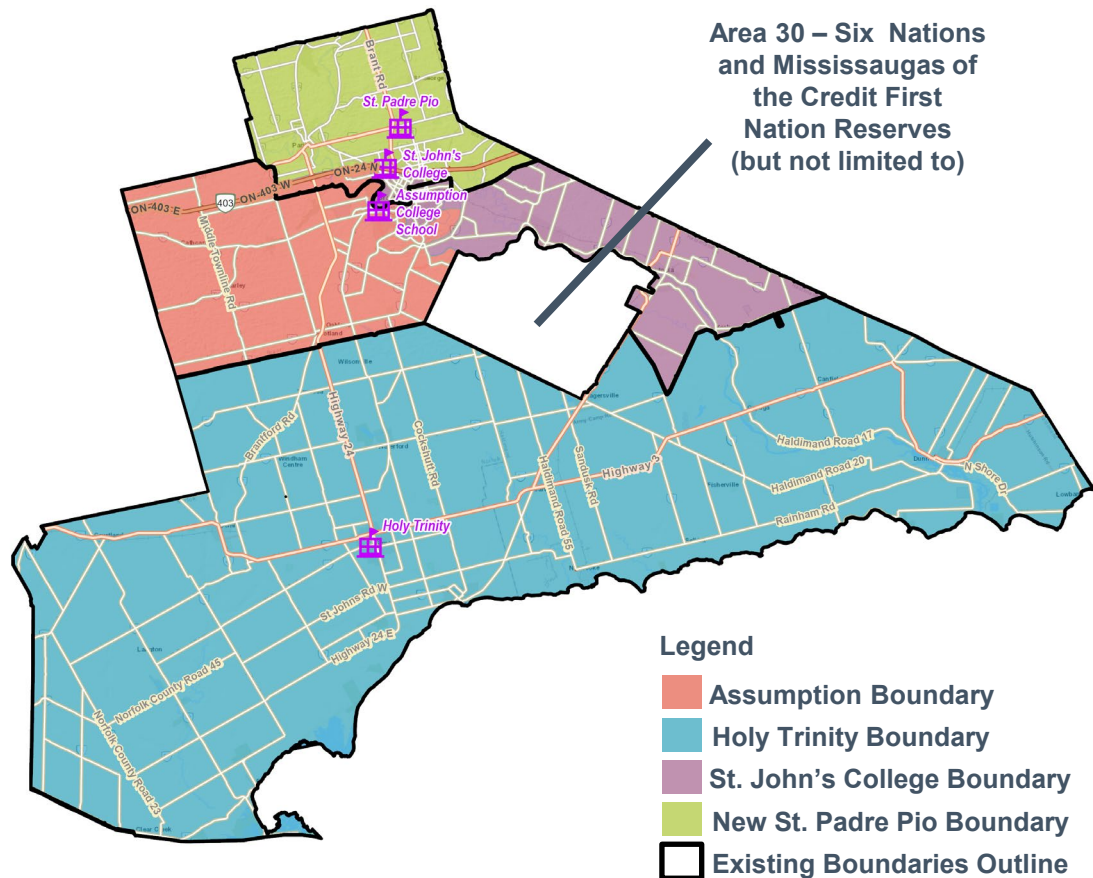
- ***Consultant believes there is potential to adjust the following areas (please refer to PDF of study areas by school attendance boundary):***

Focus Schools	Identified Challenge	Relief School(s)	Study Area(s) to Move
Assumption College School	Overcapacity with use of 21 portables on site	New St. Padre Pio CSS	<ul style="list-style-type: none"> • Area 3 – Holy Cross • Area 5 – Madonna Della Libera • Area 7 – Notre Dame (Caledonia) • Area 10 – Pope Francis • Area 20 – St. Patrick (Caledonia) • Area 22 – St. Peter
		St. John's CS	<ul style="list-style-type: none"> • Area 3 – Holy Cross • Area 5 – Madonna Della Libera • Area 7 – Notre Dame (Caledonia) • Area 10 – Pope Francis • Area 20 – St. Patrick (Caledonia) • Area 22 – St. Peter
		Holy Trinity CHS	<ul style="list-style-type: none"> • Area 7 – Notre Dame (Caledonia) • Area 10 – Pope Francis • Area 20 – St. Patrick (Caledonia)
St. John's College School	At capacity without use of 9 portables on site	New St. Padre Pio CSS	<ul style="list-style-type: none"> • Area 4 – Holy Family • Area 6 – Notre Dame (Brantford) • Area 11 – Resurrection • Area 13 – Sacred Heart (Paris) • Area 21 – St. Patrick (Brantford) • Area 28 – St. Leo
		Assumption CS	<ul style="list-style-type: none"> • Area 2 – Christ the King • Area 4 – Holy Family • Area 13 – Sacred Heart (Paris)

Secondary Attendance Boundary Review

Idea for Consideration 1a

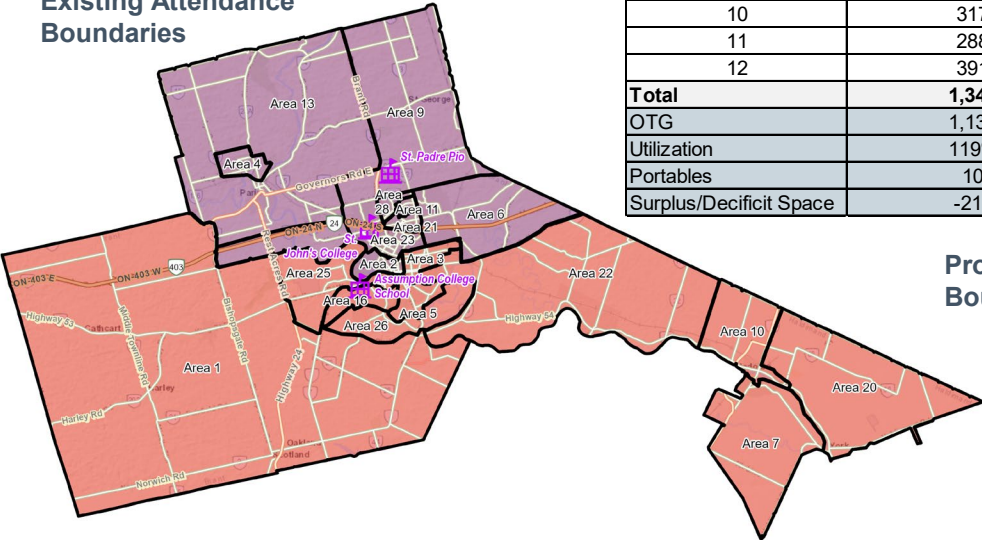
School	Study Areas That Make Up Boundary
Assumption College School	<ul style="list-style-type: none"> Area 1 – Blessed Sacrament Area 16 – St. Gabriel Area 25 – St. Theresa Area 26 – St. Basil
Holy Trinity Catholic High School	<ul style="list-style-type: none"> Area 8 – Our Lady of Fatima (Courtland) Area 12 – Sacred Heart (Langton) Area 15 – St. Frances Cabrini Area 17 – St. Joseph Area 18 – St. Mary (Hagersville) Area 19 – St. Michael's (Dunnville) Area 24 – St. Stephen's Area 27 – St. Cecilia's Area 29 – St. Michael's (Walsh)
St. John's College School	<ul style="list-style-type: none"> Area 2 – Christ the King Area 3 – Holy Cross Area 5 – Madonna Della Libera Area 7 – Notre Dame (Caledonia) Area 10 – Pope Francis Area 20 – St. Patrick (Caledonia) Area 22 – St. Peter
New St. Padre Pio Catholic Secondary School	<ul style="list-style-type: none"> Area 4 – Holy Family Area 6 – Notre Dame (Brantford) Area 9 – Our Lady of Providence Area 11 – Resurrection Area 13 – Sacred Heart (Paris) Area 21 – St. Patrick (Brantford) Area 28 – St. Leo



Secondary Attendance Boundary Review

Idea for Consideration 1a

Existing Attendance
Boundaries

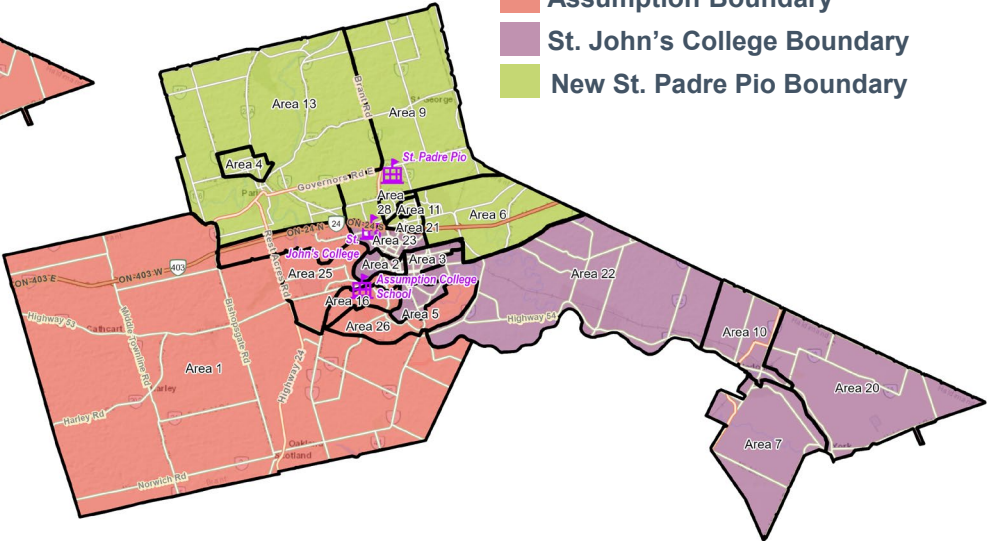


Grade	Assumption	Holy Trinity	St. John's College	New St. Padre Pio
9	345	260	218	267
10	317	223	202	267
11	288	240	168	229
12	391	271	211	306
Total	1,341	994	799	1,069
OTG	1,130	1,193	1,403	1,377
Utilization	119%	83%	57%	78%
Portables	10	0	0	0
Surplus/Decifcit Space	-211	199	604	308

Proposed Attendance
Boundaries

Legend

- Assumption Boundary
- St. John's College Boundary
- New St. Padre Pio Boundary

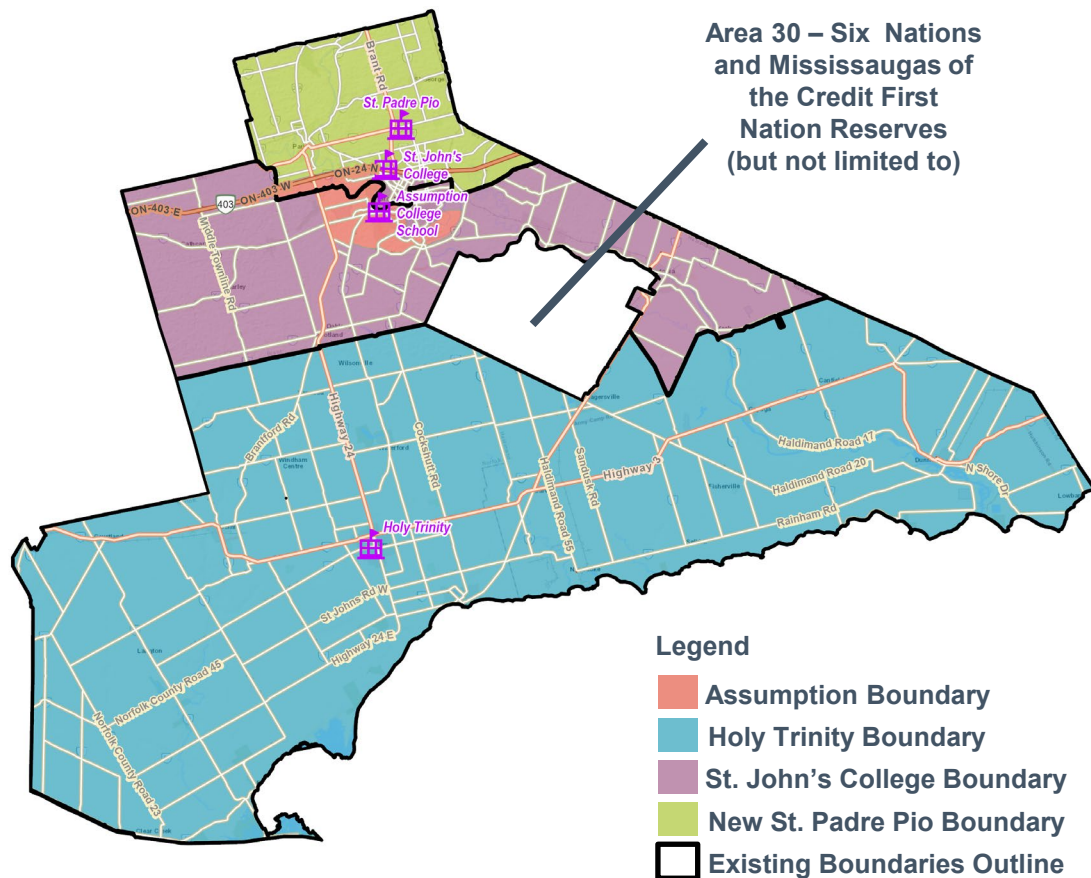


School	On-the-Ground Capacity	Existing (2024/25)			Proposed		
		Enrol	Utz	Ports	Enrol	Utz	Ports
Assumption College School	1,130	1,865	165%	21	1,341	119%	9
St. John's College	1,403	1,405	100%	9	799	57%	0
Holy Trinity Catholic HS	1,193	981	82%	0	994	83%	0
New St. Padre Pio CSS	1,377	0	0%	0	1,069	78%	0
Total	5,103	4,251	83%	30	4,203	82%	9

Secondary Attendance Boundary Review

Idea for Consideration 1b

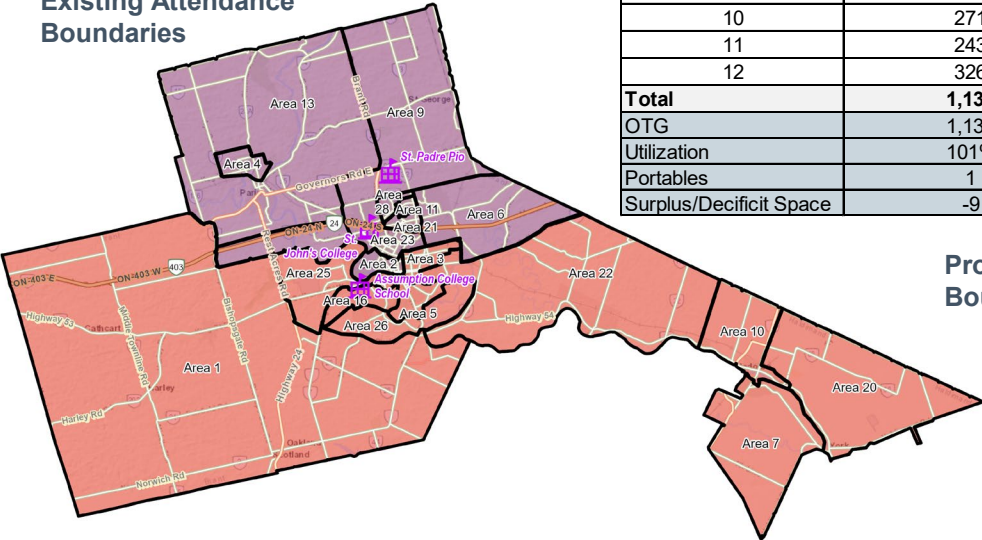
School	Study Areas That Make Up Boundary
Assumption College School	<ul style="list-style-type: none"> Area 16 – St. Gabriel Area 25 – St. Theresa Area 26 – St. Basil
Holy Trinity Catholic High School	<ul style="list-style-type: none"> Area 8 – Our Lady of Fatima (Courtland) Area 12 – Sacred Heart (Langton) Area 15 – St. Frances Cabrini Area 17 – St. Joseph Area 18 – St. Mary (Hagersville) Area 19 – St. Michael's (Dunnville) Area 24 – St. Stephen's Area 27 – St. Cecilia's Area 29 – St. Michael's (Walsh)
St. John's College School	<ul style="list-style-type: none"> Area 1 – Blessed Sacrament Area 2 – Christ the King Area 3 – Holy Cross Area 5 – Madonna Della Libera Area 7 – Notre Dame (Caledonia) Area 10 – Pope Francis Area 20 – St. Patrick (Caledonia) Area 22 – St. Peter
New St. Padre Pio Catholic Secondary School	<ul style="list-style-type: none"> Area 4 – Holy Family Area 6 – Notre Dame (Brantford) Area 9 – Our Lady of Providence Area 11 – Resurrection Area 13 – Sacred Heart (Paris) Area 21 – St. Patrick (Brantford) Area 28 – St. Leo



Secondary Attendance Boundary Review

Idea for Consideration 1b

Existing Attendance Boundaries

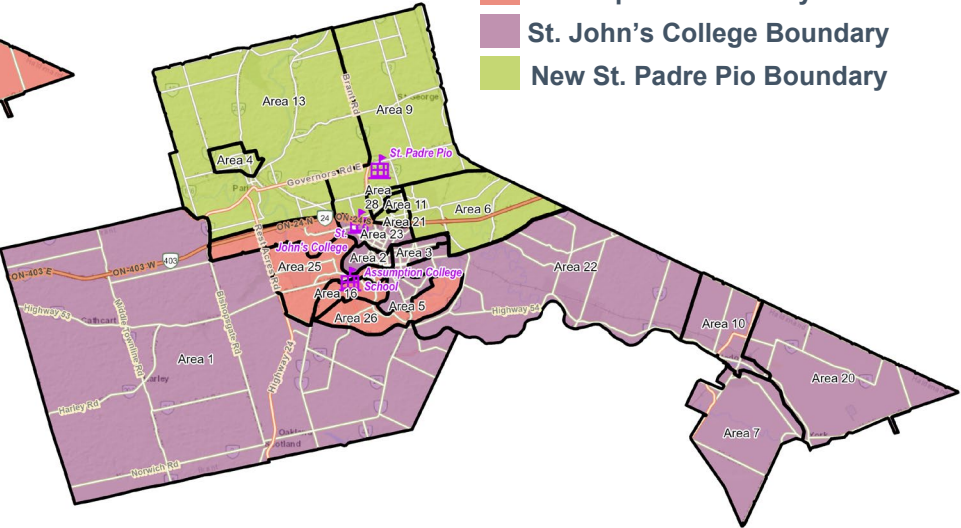


Grade	Assumption	Holy Trinity	St. John's College	New St. Padre Pio
9	299	260	264	267
10	271	223	248	267
11	243	240	213	229
12	326	271	276	306
Total	1,139	994	1,001	1,069
OTG	1,130	1,193	1,403	1,377
Utilization	101%	83%	71%	78%
Portables	1	-9	-18	-14
Surplus/Decifcit Space	-9	199	402	308

Proposed Attendance Boundaries

Legend

- Assumption Boundary
- St. John's College Boundary
- New St. Padre Pio Boundary

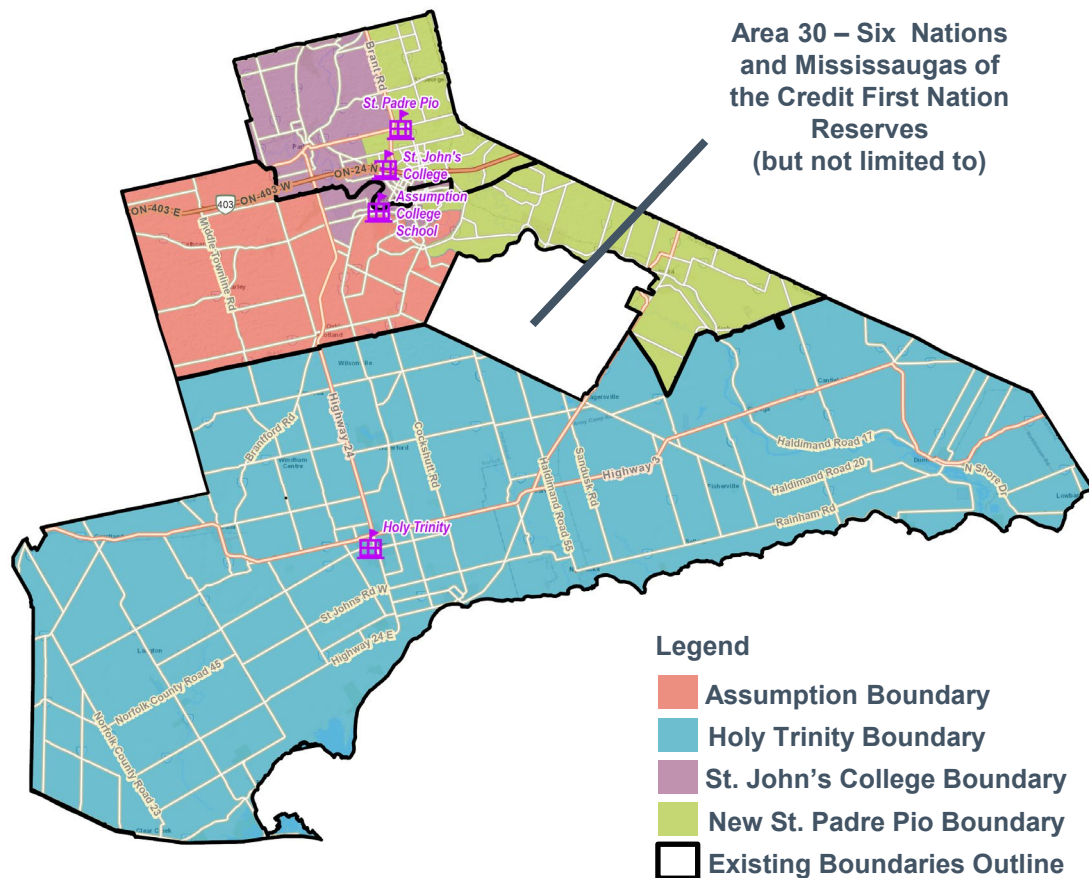


School	On-the-Ground Capacity	Existing (2024/25)			Proposed		
		Enrol	Utz	Ports	Enrol	Utz	Ports
Assumption College School	1,130	1,865	165%	21	1,139	101%	0
St. John's College	1,403	1,405	100%	9	1,001	71%	0
Holy Trinity Catholic HS	1,193	981	82%	0	994	83%	0
New St. Padre Pio CSS	1,377	0	0%	0	1,069	78%	0
Total	5,103	4,251	83%	30	4,203	82%	0

Secondary Attendance Boundary Review

Idea for Consideration 2

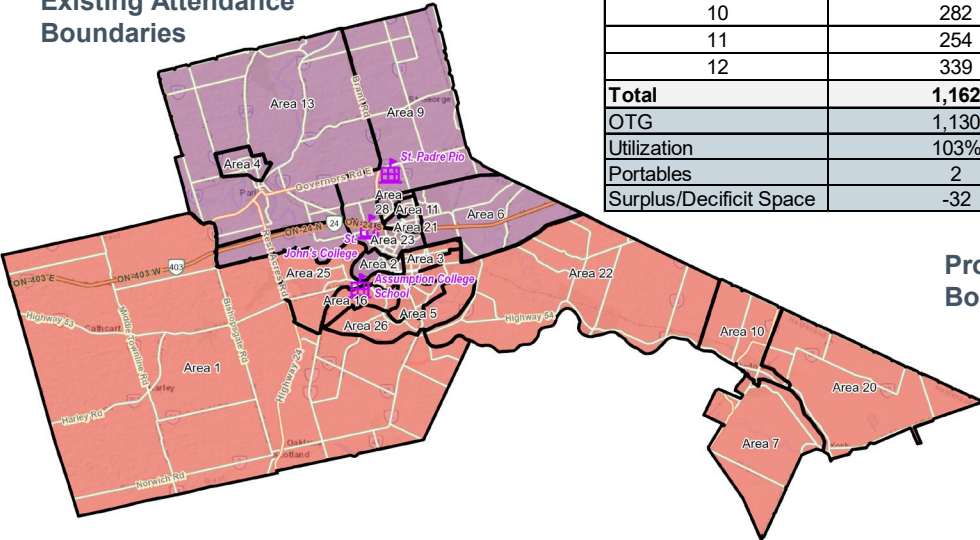
School	Study Areas That Make Up Boundary
Assumption College School	<ul style="list-style-type: none"> Area 1 – Blessed Sacrament Area 16 – St. Gabriel Area 26 – St. Basil
Holy Trinity Catholic High School	<ul style="list-style-type: none"> Area 8 – Our Lady of Fatima (Courtland) Area 12 – Sacred Heart (Langton) Area 15 – St. Frances Cabrini Area 17 – St. Joseph Area 18 – St. Mary (Hagersville) Area 19 – St. Michael's (Dunnville) Area 24 – St. Stephen's Area 27 – St. Cecilia's Area 29 – St. Michael's (Walsh)
St. John's College School	<ul style="list-style-type: none"> Area 2 – Christ the King Area 3 – Holy Cross Area 4 – Holy Family Area 5 – Madonna Della Libera Area 13 – Sacred Heart (Paris) Area 23 – St. Pius Area 25 – St. Theresa
New St. Padre Pio Catholic Secondary School	<ul style="list-style-type: none"> Area 6 – Notre Dame (Brantford) Area 7 – Notre Dame (Caledonia) Area 9 – Our Lady of Providence Area 10 – Pope Francis Area 11 – Resurrection Area 20 – St. Patrick (Caledonia) Area 21 – St. Patrick (Brantford) Area 22 – St. Peter Area 28 – St. Leo



Secondary Attendance Boundary Review

Idea for Consideration 2

Existing Attendance Boundaries

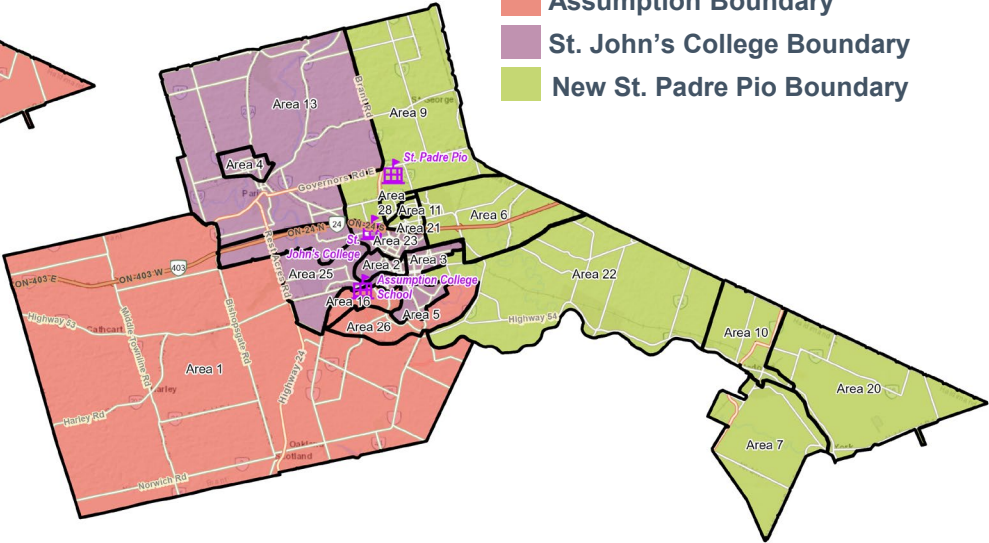


Grade	Assumption	Holy Trinity	St. John's College	New St. Padre Pio
9	287	260	304	239
10	282	223	273	231
11	254	240	202	229
12	339	271	287	282
Total	1,162	994	1,066	981
OTG	1,130	1,193	1,403	1,377
Utilization	103%	83%	76%	71%
Portables	2	-9	-15	-18
Surplus/Decifcit Space	-32	199	337	396

Proposed Attendance Boundaries

Legend

- Assumption Boundary
- St. John's College Boundary
- New St. Padre Pio Boundary



School	On-the-Ground Capacity	Existing (2024/25)			Proposed		
		Enrol	Utz	Ports	Enrol	Utz	Ports
Assumption College School	1,130	1,865	165%	21	1,162	103%	1
St. John's College	1,403	1,405	100%	9	1,066	76%	0
Holy Trinity Catholic HS	1,193	981	82%	0	994	83%	0
New St. Padre Pio CSS	1,377	0	0%	0	981	71%	0
Total	5,103	4,251	83%	30	4,203	82%	1

Committee Considerations

Secondary Attendance Boundary Review

Committee Considerations

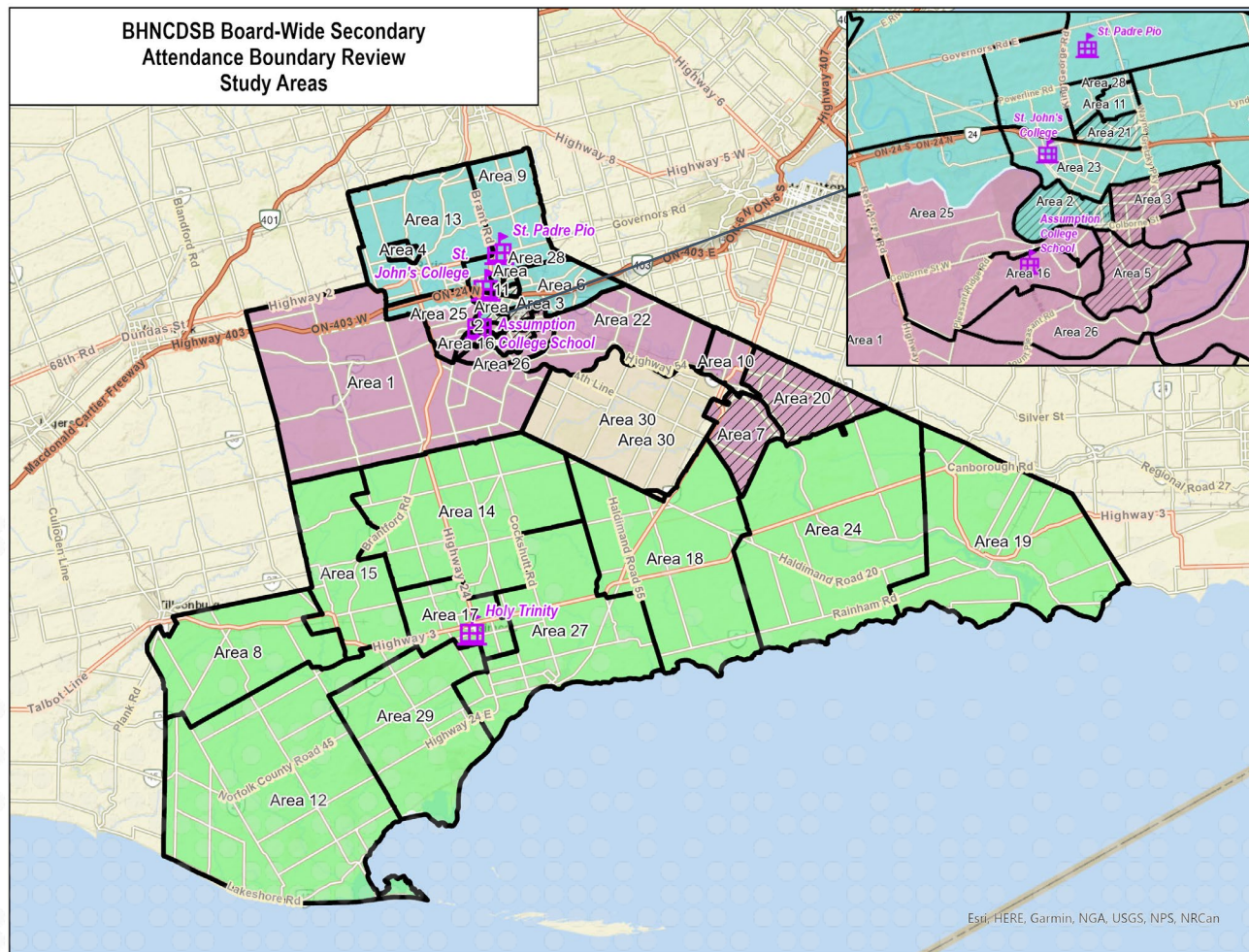
The committee highlighted the following study areas to not move:

Brantford

- Area 2 – Christ the King
- Area 3 – Holy Cross
- Area 5 – Madonna Della Libera
- Area 21 – St. Patrick (Brantford)

Caledonia

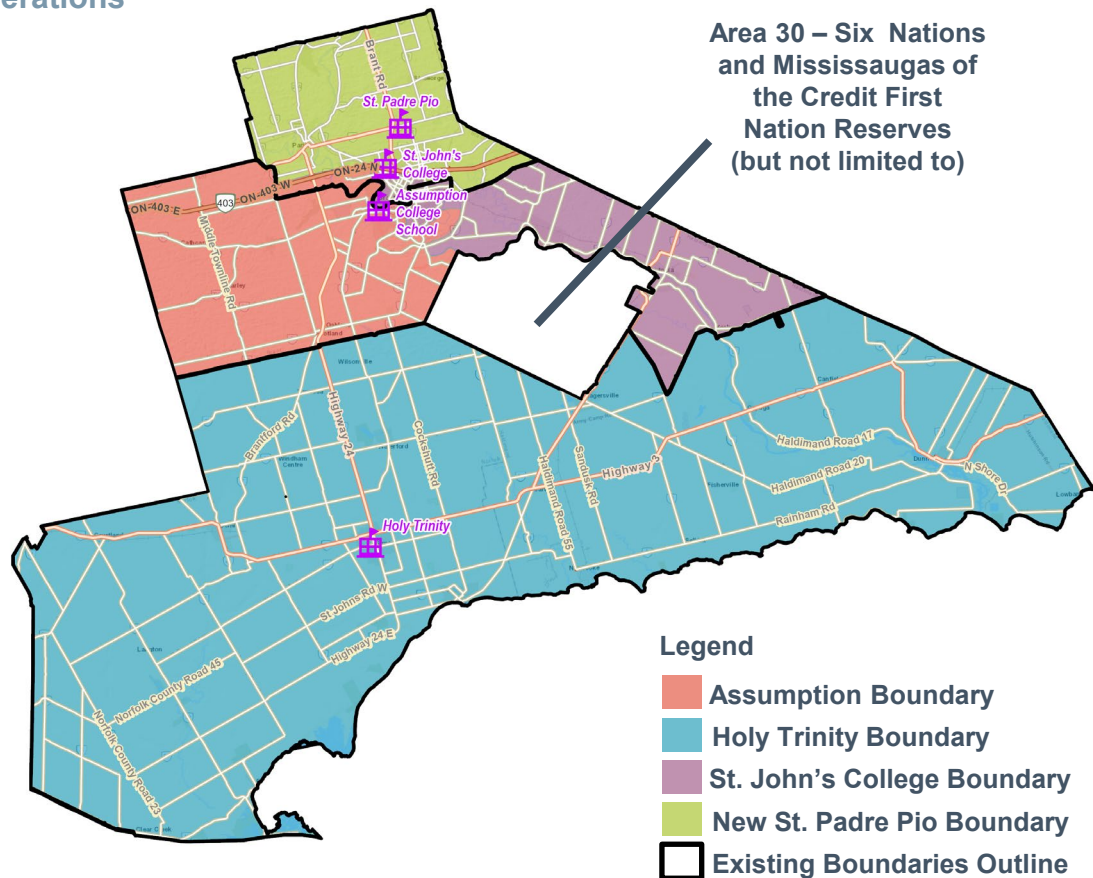
- Area 7 – Notre Dame (Caledonia)
- Area 20 – St. Patrick (Caledonia)



Secondary Attendance Boundary Review

Idea for Consideration 1a – Committee Considerations

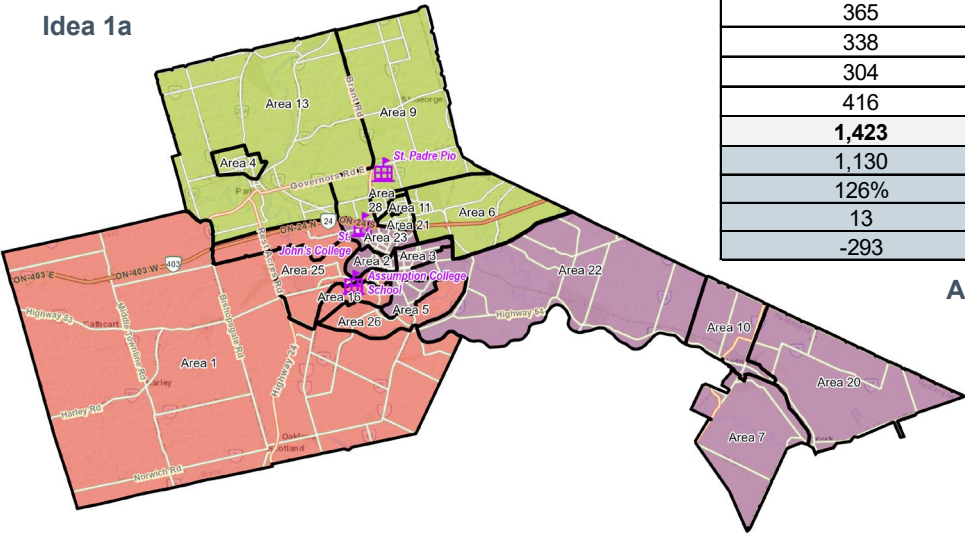
School	Study Areas That Make Up Boundary
Assumption College School	<ul style="list-style-type: none"> Area 1 – Blessed Sacrament Area 16 – St. Gabriel Area 25 – St. Theresa Area 26 – St. Basil New SW Brantford School
Holy Trinity Catholic High School	<ul style="list-style-type: none"> Area 8 – Our Lady of Fatima (Courtland) Area 12 – Sacred Heart (Langton) Area 15 – St. Frances Cabrini Area 17 – St. Joseph Area 18 – St. Mary (Hagersville) Area 19 – St. Michael's (Dunnville) Area 24 – St. Stephen's Area 27 – St. Cecilia's Area 29 – St. Michael's (Walsh)
St. John's College School	<ul style="list-style-type: none"> Area 2 – Christ the King Area 3 – Holy Cross Area 5 – Madonna Della Libera Area 7 – Notre Dame (Caledonia) Area 10 – Pope Francis Area 20 – St. Patrick (Caledonia) Area 22 – St. Peter
New St. Padre Pio Catholic Secondary School	<ul style="list-style-type: none"> Area 4 – Holy Family Area 6 – Notre Dame (Brantford) Area 9 – Our Lady of Providence Area 11 – Resurrection Area 13 – Sacred Heart (Paris) Area 21 – St. Patrick (Brantford) Area 28 – St. Leo New Paris School



Secondary Attendance Boundary Review

Adjusted Idea for Consideration 1a

Idea 1a

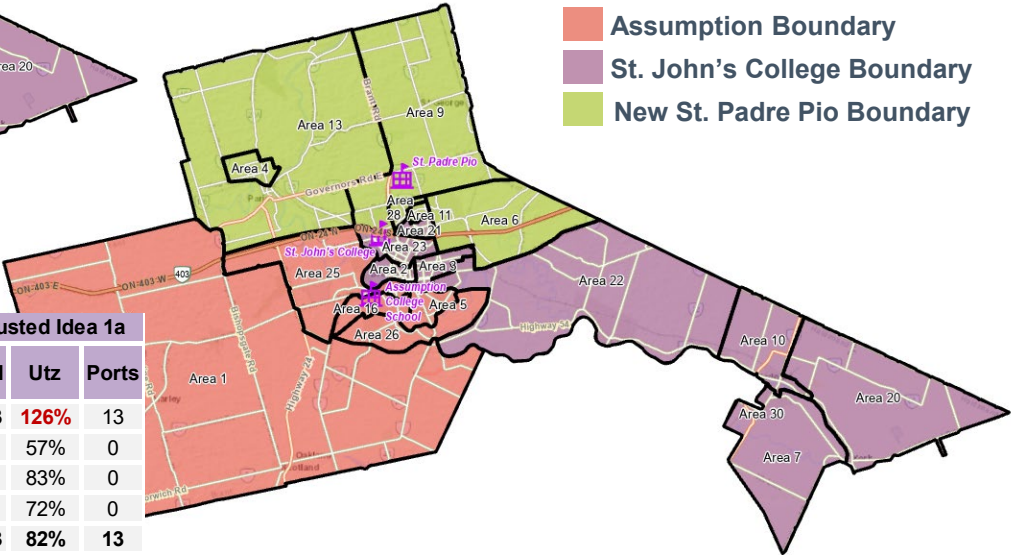


Assumption	Holy Trinity	St. John's College	New St. Padre Pio
365	260	215	250
338	223	198	250
304	240	170	211
416	271	211	281
1,423	994	794	992
1,130	1,193	1,403	1,377
126%	83%	57%	72%
13	-9	-27	-17
-293	199	609	385

Adjusted Idea 1a

Legend

- Assumption Boundary
- St. John's College Boundary
- New St. Padre Pio Boundary

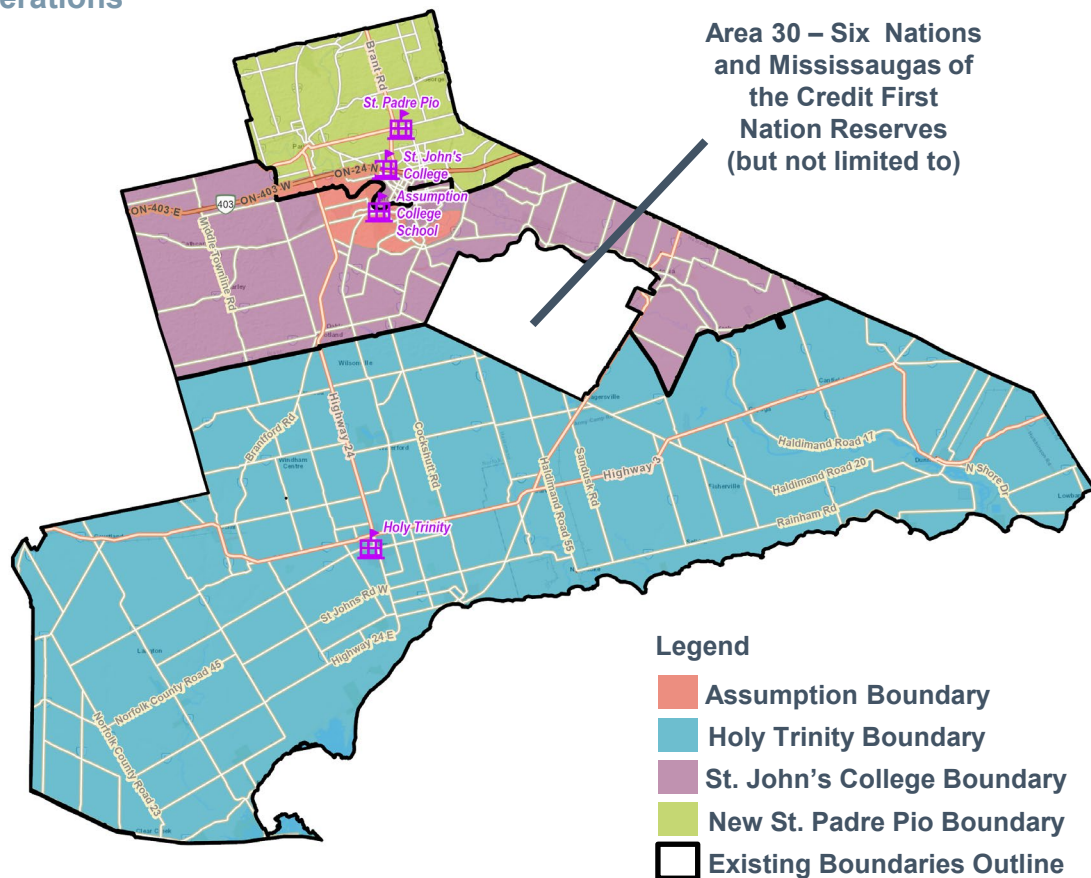


School	On-the-Ground Capacity	Existing (2024/25)			Idea 1a			Adjusted Idea 1a		
		Enrol	Utz	Ports	Enrol	Utz	Ports	Enrol	Utz	Ports
Assumption College School	1,130	1,865	165%	21	1,341	119%	9	1,423	126%	13
St. John's College	1,403	1,405	100%	9	799	57%	0	794	57%	0
Holy Trinity Catholic HS	1,193	981	82%	0	994	83%	0	994	83%	0
New St. Padre Pio CSS	1,377	0	0%	0	1,069	78%	0	992	72%	0
Total	5,103	4,251	83%	30	4,203	82%	9	4,203	82%	13

Secondary Attendance Boundary Review

Idea for Consideration 1b – Committee Considerations

School	Study Areas That Make Up Boundary
Assumption College School	<ul style="list-style-type: none"> Area 16 – St. Gabriel Area 25 – St. Theresa Area 26 – St. Basil New SW Brantford School
Holy Trinity Catholic High School	<ul style="list-style-type: none"> Area 8 – Our Lady of Fatima (Courtland) Area 12 – Sacred Heart (Langton) Area 15 – St. Frances Cabrini Area 17 – St. Joseph Area 18 – St. Mary (Hagersville) Area 19 – St. Michael's (Dunnville) Area 24 – St. Stephen's Area 27 – St. Cecilia's Area 29 – St. Michael's (Walsh)
St. John's College School	<ul style="list-style-type: none"> Area 1 – Blessed Sacrament Area 2 – Christ the King Area 3 – Holy Cross Area 5 – Madonna Della Libera Area 7 – Notre Dame (Caledonia) Area 10 – Pope Francis Area 20 – St. Patrick (Caledonia) Area 22 – St. Peter
New St. Padre Pio Catholic Secondary School	<ul style="list-style-type: none"> Area 4 – Holy Family Area 6 – Notre Dame (Brantford) Area 9 – Our Lady of Providence Area 11 – Resurrection Area 13 – Sacred Heart (Paris) Area 21 – St. Patrick (Brantford) Area 28 – St. Leo New Paris School



Secondary Attendance Boundary Review

Adjusted Idea for Consideration 1b

Idea 1b

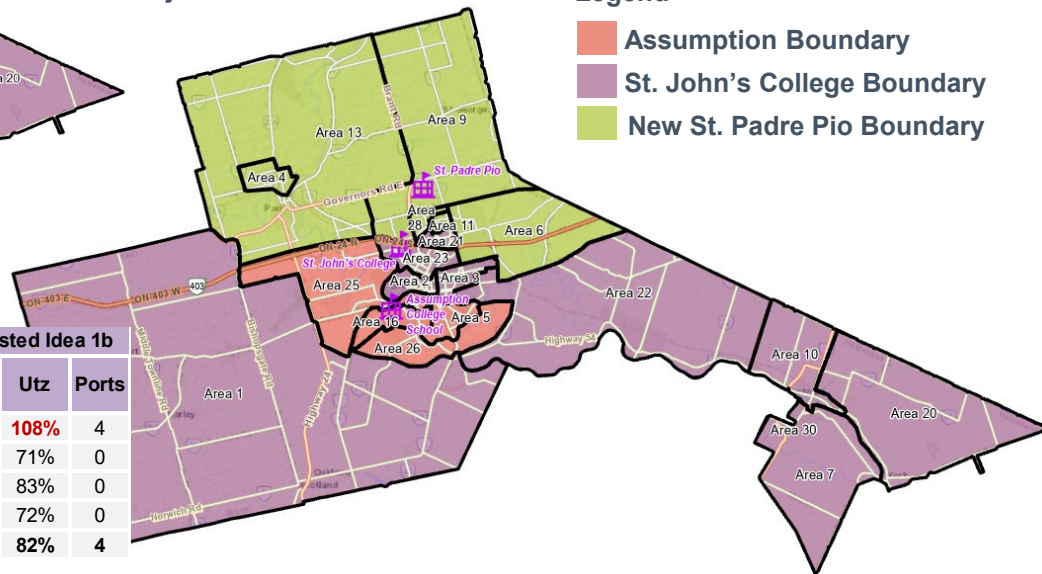
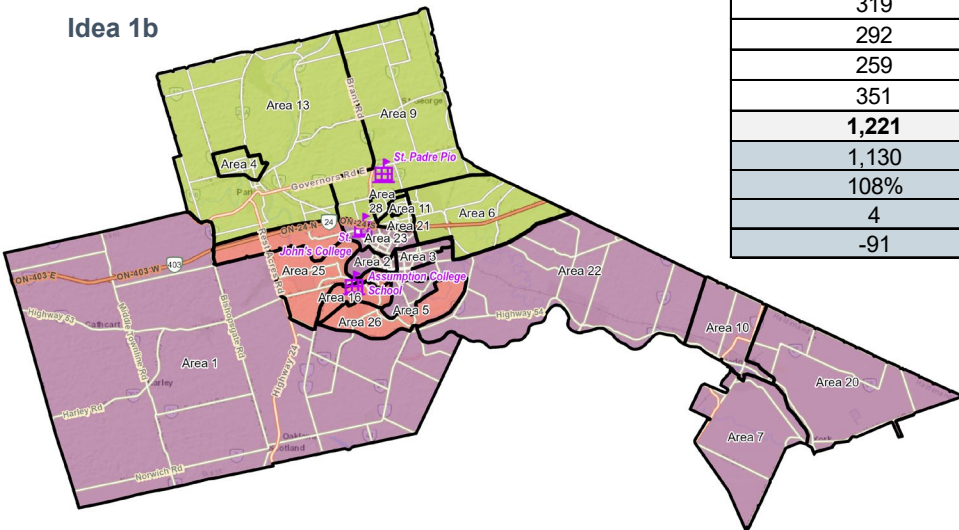
Assumption	Holy Trinity	St. John's College	New St. Padre Pio
319	260	261	250
292	223	244	250
259	240	215	211
351	271	276	281
1,221	994	996	992
1,130	1,193	1,403	1,377
108%	83%	71%	72%
4	-9	-18	-17
-91	199	407	385

Adjusted Idea 1b

Legend

- Assumption Boundary
- St. John's College Boundary
- New St. Padre Pio Boundary

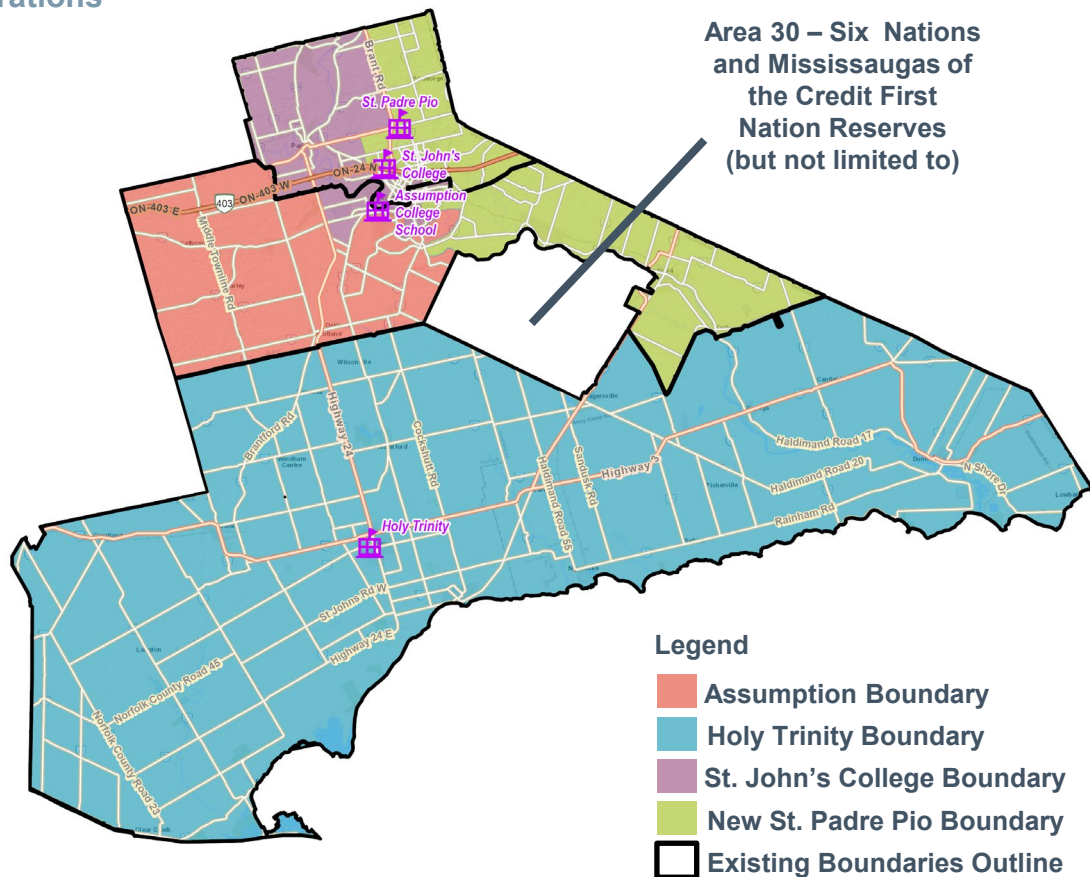
School	On-the-Ground Capacity	Existing (2024/25)			Idea 1b			Adjusted Idea 1b		
		Enrol	Utz	Ports	Enrol	Utz	Ports	Enrol	Utz	Ports
Assumption College School	1,130	1,865	165%	21	1,139	101%	0	1,221	108%	4
St. John's College	1,403	1,405	100%	9	1,001	71%	0	996	71%	0
Holy Trinity Catholic HS	1,193	981	82%	0	994	83%	0	994	83%	0
New St. Padre Pio CSS	1,377	0	0%	0	1,069	78%	0	992	72%	0
Total	5,103	4,251	83%	30	4,203	82%	0	4,203	82%	4



Secondary Attendance Boundary Review

Idea for Consideration 2 – Committee Considerations

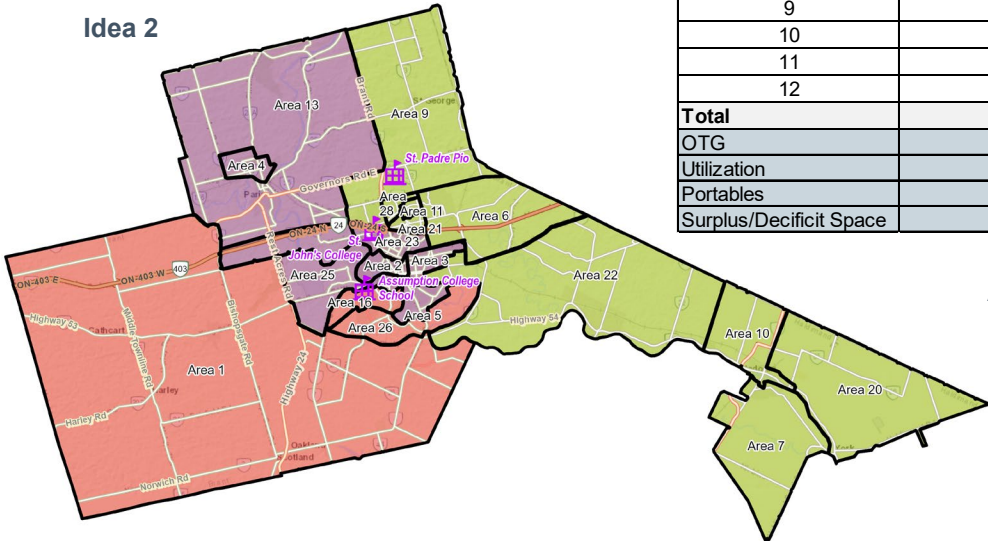
School	Study Areas That Make Up Boundary
Assumption College School	<ul style="list-style-type: none"> Area 1 – Blessed Sacrament Area 16 – St. Gabriel Area 26 – St. Basil New SW Brantford School
Holy Trinity Catholic High School	<ul style="list-style-type: none"> Area 8 – Our Lady of Fatima (Courtland) Area 12 – Sacred Heart (Langton) Area 15 – St. Frances Cabrini Area 17 – St. Joseph Area 18 – St. Mary (Hagersville) Area 19 – St. Michael's (Dunnville) Area 24 – St. Stephen's Area 27 – St. Cecilia's Area 29 – St. Michael's (Walsh)
St. John's College School	<ul style="list-style-type: none"> Area 2 – Christ the King Area 3 – Holy Cross Area 4 – Holy Family Area 5 – Madonna Della Libera Area 13 – Sacred Heart (Paris) Area 23 – St. Pius Area 25 – St. Theresa New Paris School
New St. Padre Pio Catholic Secondary School	<ul style="list-style-type: none"> Area 6 – Notre Dame (Brantford) Area 7 – Notre Dame (Caledonia) Area 9 – Our Lady of Providence Area 10 – Pope Francis Area 11 – Resurrection Area 20 – St. Patrick (Caledonia) Area 21 – St. Patrick (Brantford) Area 22 – St. Peter Area 28 – St. Leo



Secondary Attendance Boundary Review

Adjusted Idea for Consideration 2

Idea 2

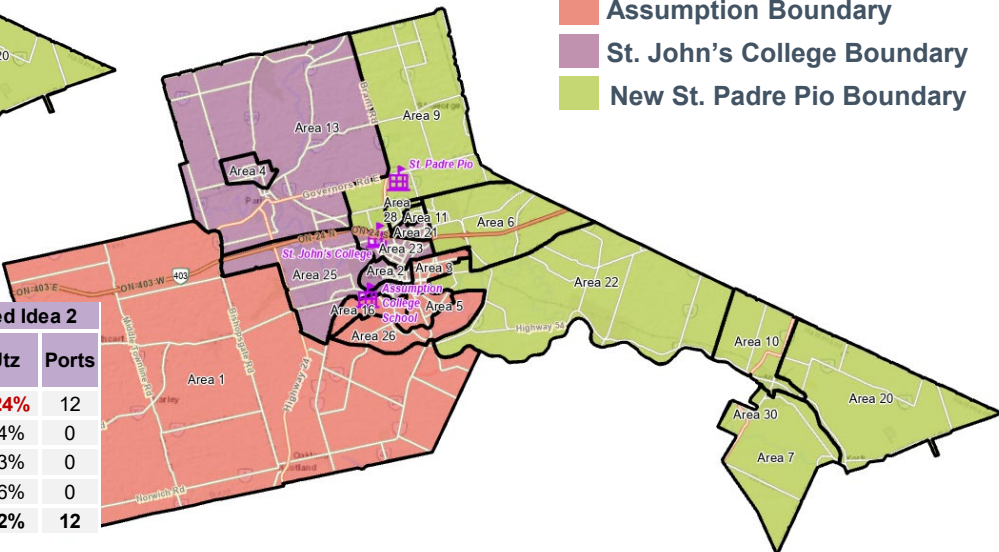


Grade	Assumption	Holy Trinity	St. John's College	New St. Padre Pio
9	358	260	250	222
10	344	223	228	214
11	300	240	174	211
12	404	271	247	257
Total	1,406	994	899	904
OTG	1,130	1,193	1,403	1,377
Utilization	124%	83%	64%	66%
Portables	12	-9	-22	-21
Surplus/Decifcit Space	-276	199	504	473

Adjusted Idea 2

Legend

- Assumption Boundary
- St. John's College Boundary
- New St. Padre Pio Boundary



School	On-the-Ground Capacity	Existing (2024/25)			Idea 2			Adjusted Idea 2		
		Enrol	Utz	Ports	Enrol	Utz	Ports	Enrol	Utz	Ports
Assumption College School	1,130	1,865	165%	21	1,162	103%	1	1,406	124%	12
St. John's College	1,403	1,405	100%	9	1,066	76%	0	899	64%	0
Holy Trinity Catholic HS	1,193	981	82%	0	994	83%	0	994	83%	0
New St. Padre Pio CSS	1,377	0	0%	0	981	71%	0	904	66%	0
Total	5,103	4,251	83%	30	4,203	82%	1	4,203	82%	12

Key Questions



- Does the committee support transferring the designated areas from Caledonia (Area 7 and Area 20) to a different Brantford secondary school, such as St. John's College or the new St. Padre Pio CSS?
- Which ideas for consideration should be presented to the public?
- Attendance considerations for students from the Six Nations and Mississaugas of the Credit First Nation Reserves?

Next Steps



- Committee members to complete short survey regarding the second committee meeting and perspectives on the preliminary ideas for consideration (online)
- Committee members can submit questions or comments to boardwidesecundary@bhncdsb.ca
- Next Committee meeting: TBD
- Public meeting: January 12, 2026
- Prepare and present final options to Trustees for approval in Spring 2026



QUESTIONS