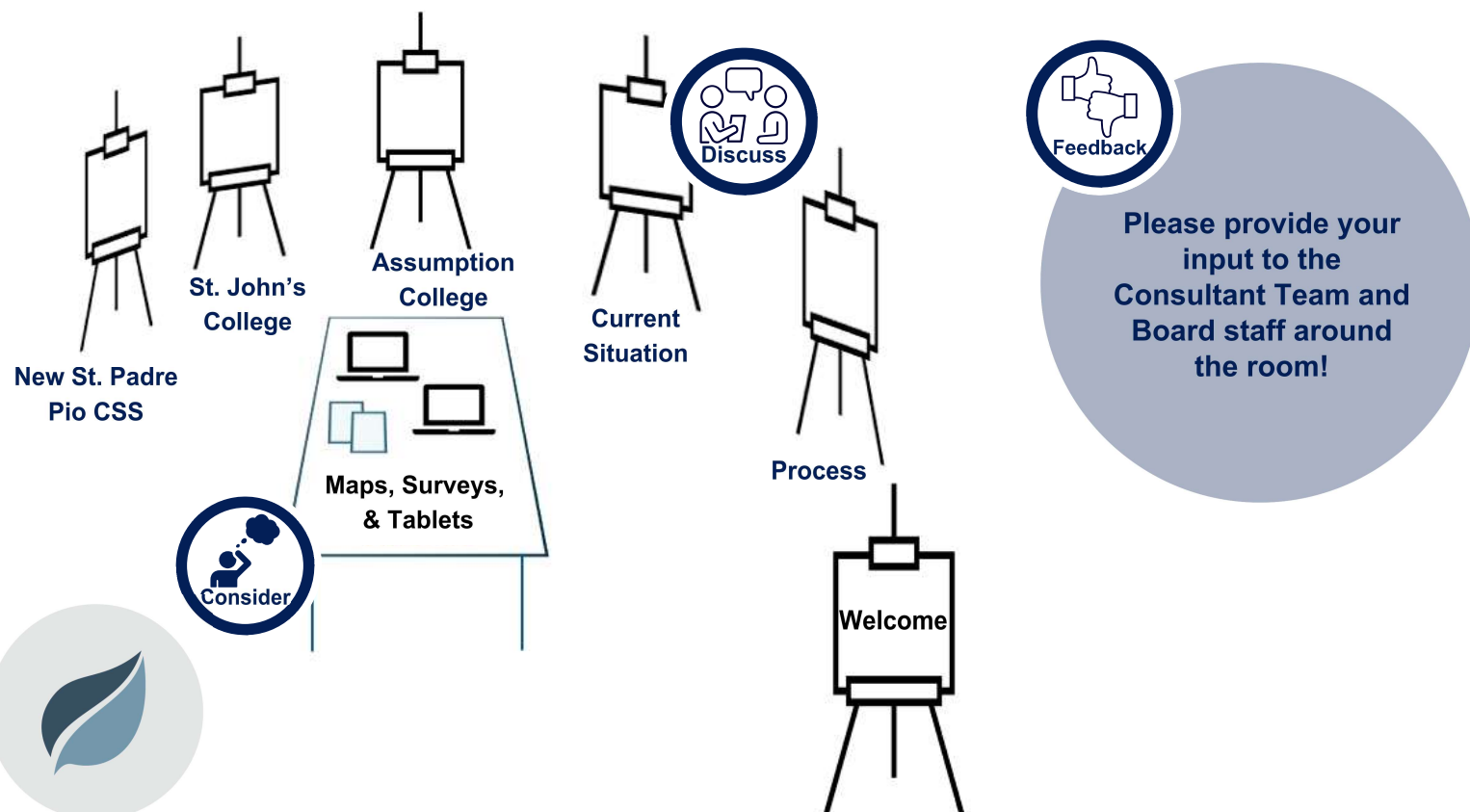


WELCOME



Brant Haldimand Norfolk Catholic District School Board Board-Wide Secondary Attendance Boundary Review



SCAN ME



ACCOMMODATION PLANNING - ATTENDANCE BOUNDARY REVIEWS



School board accommodation planning supports and guides decision-making related to:

- Providing student accommodation;
- Planning for long-term growth needs and capital investments;
- Assessing program delivery models and locations;
- Optimizing the use of existing school facilities; and,
- Supporting student achievement in alignment with the Board's vision and priorities.

Attendance Boundary Reviews - Administrative Procedure OPS 400.24

Review Process





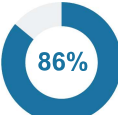
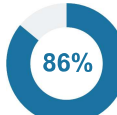


Changes in student enrolment, program demands, new school construction and other factors may result in the need for changes to school boundaries.





CURRENT SITUATION - ENROLMENT & UTILIZATION

Overview By School	Portables	Status Quo			Considering New School Capacity		
		OTG	Enrolment and Utilization	Surplus/ Deficit Space	OTG	Enrolment and Utilization	Surplus/ Deficit Space
Assumption College School	21	1,130	2,043 	-913	1,130	2,043 	-913
St. John's College	9	1,403	1,621 	-218	1,403	1,621 	-218
Holy Trinity Catholic HS	0	1,193	1,021 	+172	1,193	1,021 	+172
New St. Padre Pio CSS	0	0	N/A	N/A	1,377	TBD	+1,377
Total	30	3,726	4,685 126%	-959	5,103	4,685 92%	+418

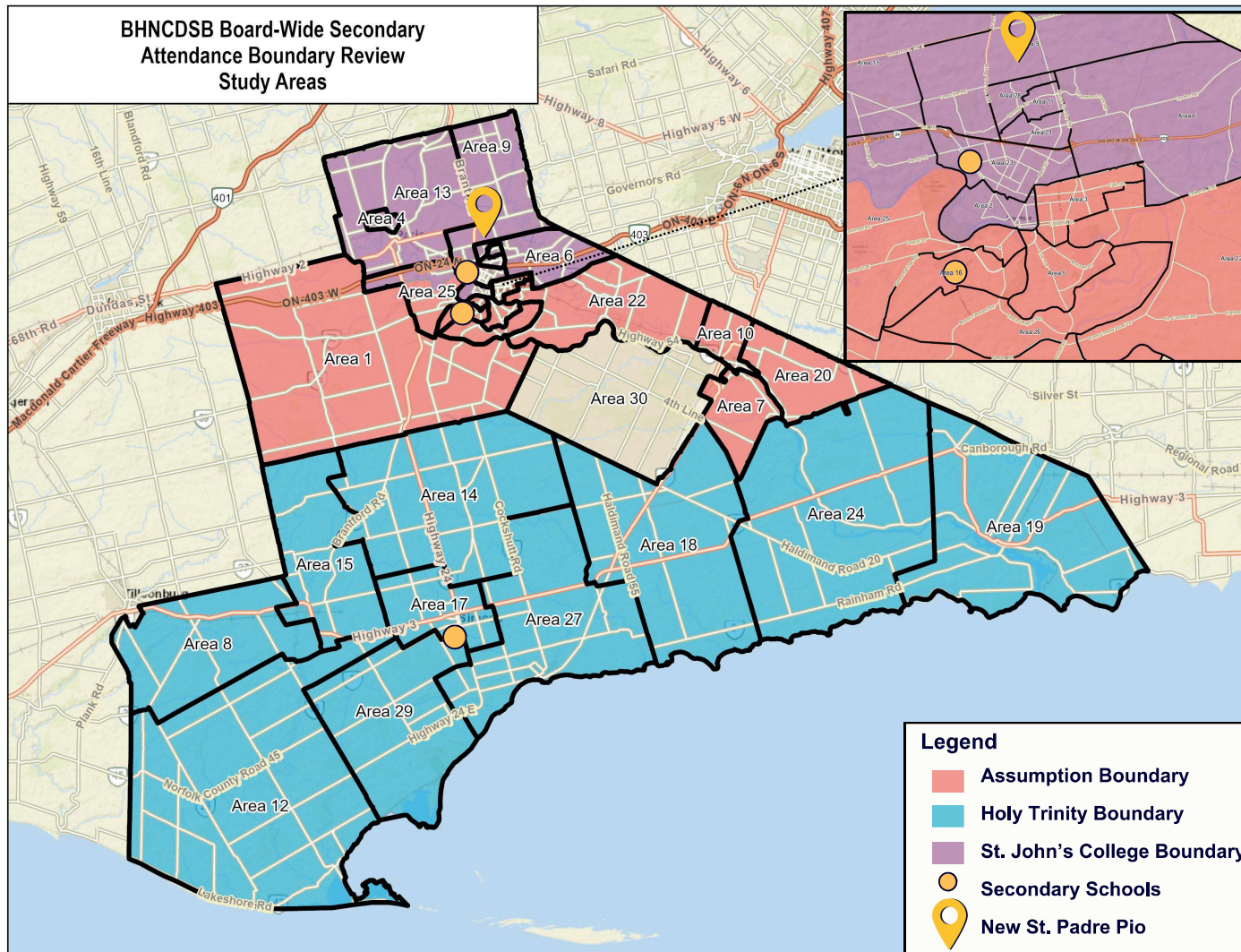


Note: Enrolment at the new school will depend on the final boundary decision. The school is shown only to illustrate how added capacity could affect enrolment across the entire review area. Analysis based on current (October 2025) student location data, the new school is expected to open in September 2027.





CURRENT SITUATION - ATTENDANCE BOUNDARIES

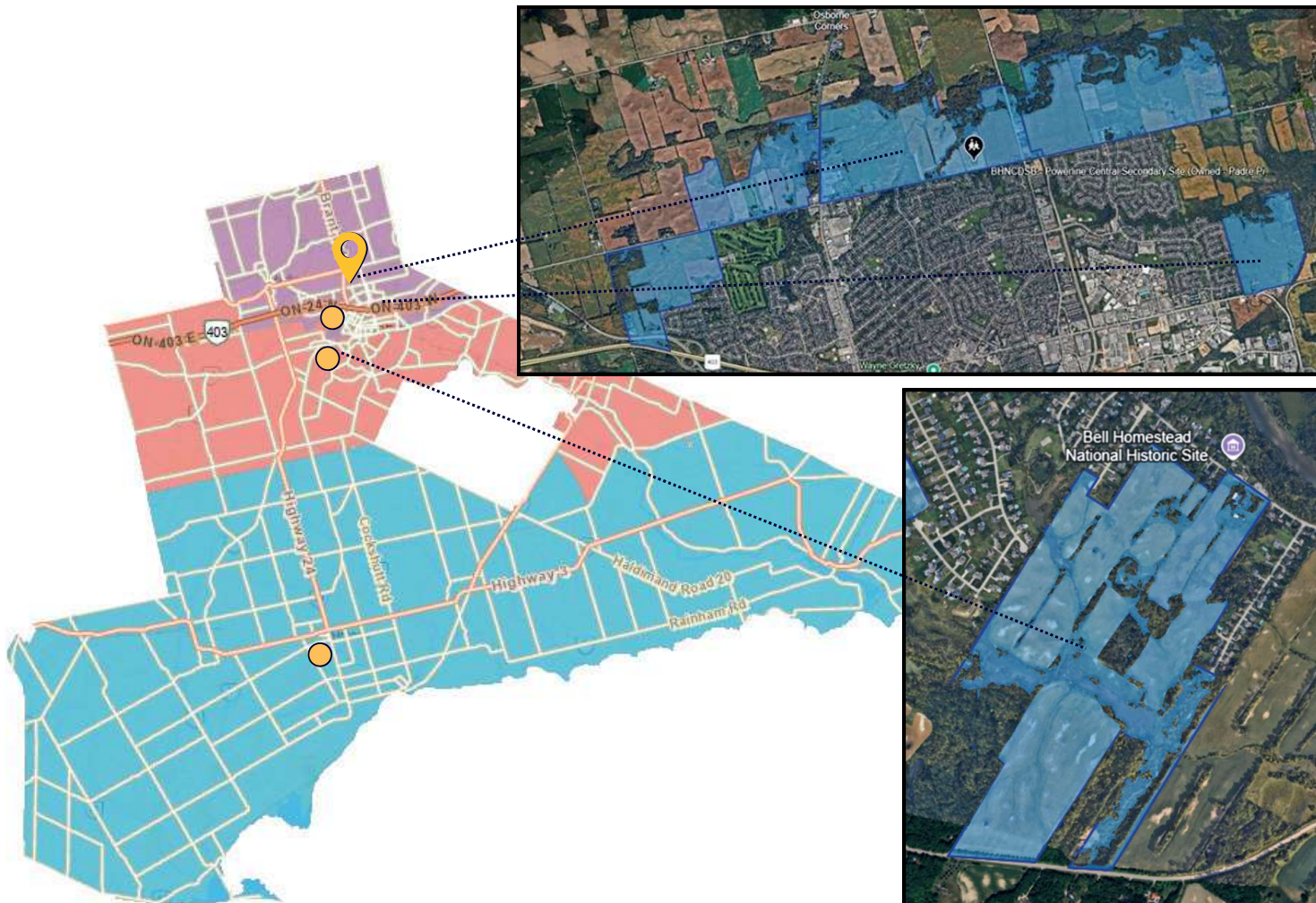


School	Study Areas That Make Up Boundary
Assumption College School	<ul style="list-style-type: none">Area 1 – Blessed SacramentArea 3 – Holy CrossArea 5 – Madonna Della LiberaArea 7 – Notre Dame (Caledonia)Area 10 – Pope FrancisArea 16 – St. GabrielArea 20 – St. Patrick (Caledonia)Area 22 – St. PeterArea 25 – St. TheresaArea 26 – St. BasilNew SW Brantford School
Holy Trinity Catholic High School	<ul style="list-style-type: none">Area 8 – Our Lady of Fatima (Courtland)Area 12 – Sacred Heart (Langton)Area 15 – St. Frances CabriniArea 17 – St. JosephArea 18 – St. Mary (Hagersville)Area 19 – St. Michael's (Dunnville)Area 24 – St. Stephen'sArea 27 – St. Cecilia'sArea 29 – St. Michael's (Walsh)
St. John's College School	<ul style="list-style-type: none">Area 2 – Christ the KingArea 4 – Holy FamilyArea 6 – Notre Dame (Brantford)Area 9 – Our Lady of ProvidenceArea 11 – ResurrectionArea 13 – Sacred Heart (Paris)Area 21 – St. Patrick (Brantford)Area 23 – St. PiusArea 28 – St. LeoNew Paris School
Six Nations and Mississaugas of the Credit First Nation Reserves (but not limited to)	<ul style="list-style-type: none">Area 30

BRANT HALDIMAND NORFOLK CATHOLIC DISTRICT SCHOOL BOARD

Public Information Session | 2026

CURRENT SITUATION - GROWTH



Growth Areas

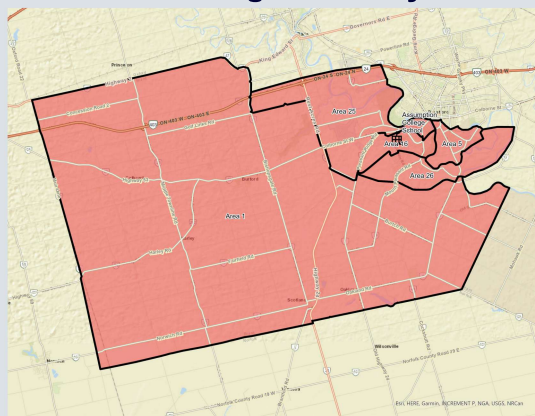
- **St. Padre Pio CSS and St. John's College**
 - Powerline West, Central and East Block Plans & Balmoral Block Plan
 - Lynden Garden Block Plan
- **Assumption College School**
 - Tutela Heights East Block Plan



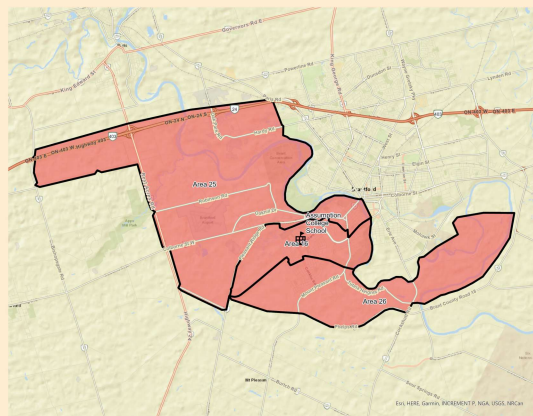
SECONDARY ATTENDANCE BOUNDARY REVIEW - ASSUMPTION COLLEGE



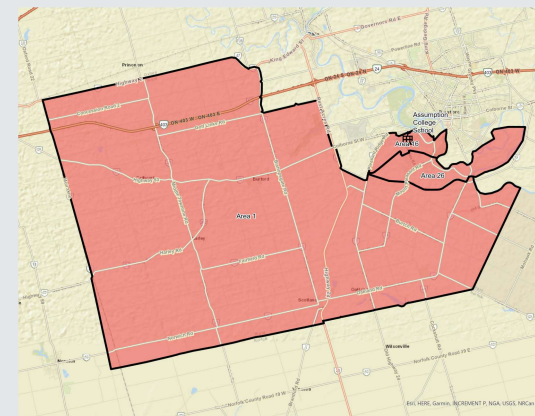
Existing Boundary



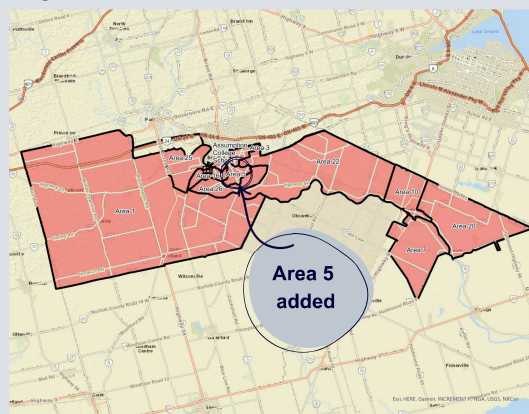
Idea for Consideration 1b



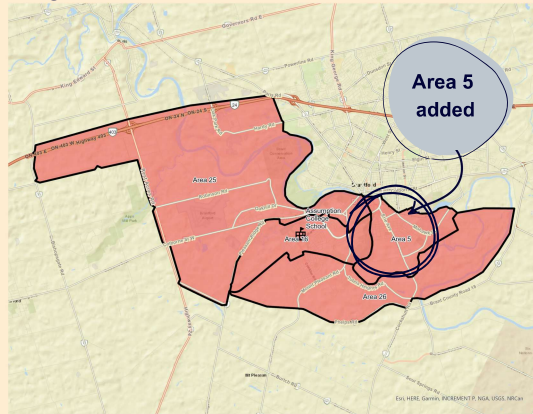
Idea for Consideration 2



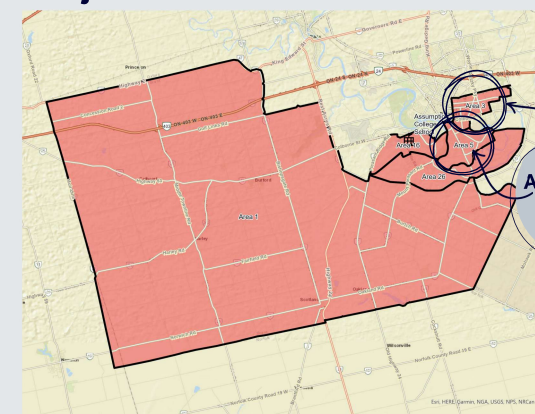
Adjusted Idea for Consideration 1a



Adjusted Idea for Consideration 1b



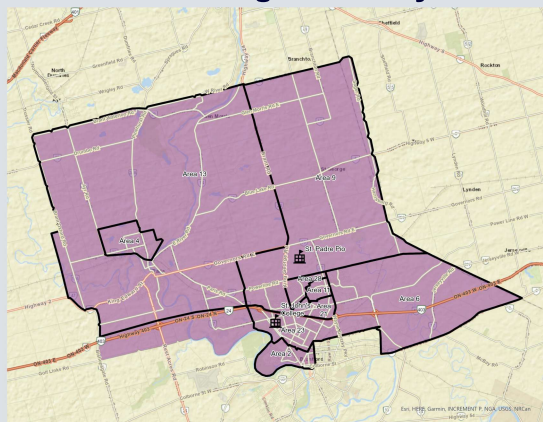
Adjusted Idea for Consideration 2



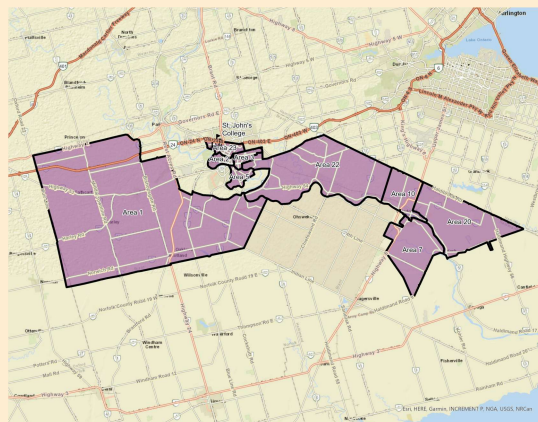
SECONDARY ATTENDANCE BOUNDARY REVIEW - ST. JOHN'S COLLEGE



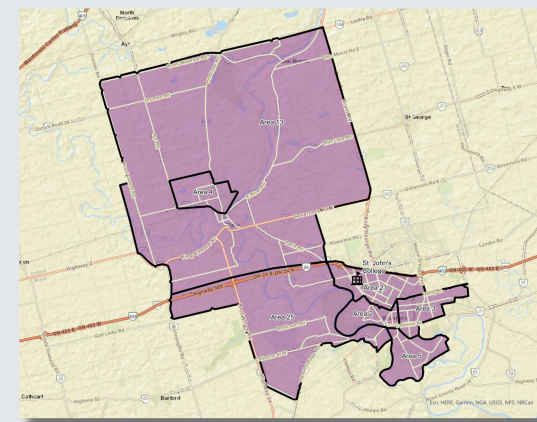
Existing Boundary



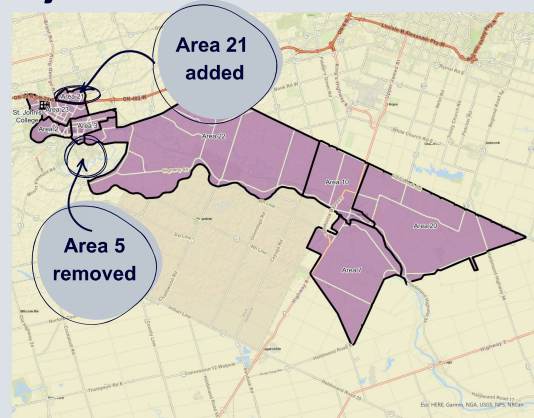
Idea for Consideration 1b



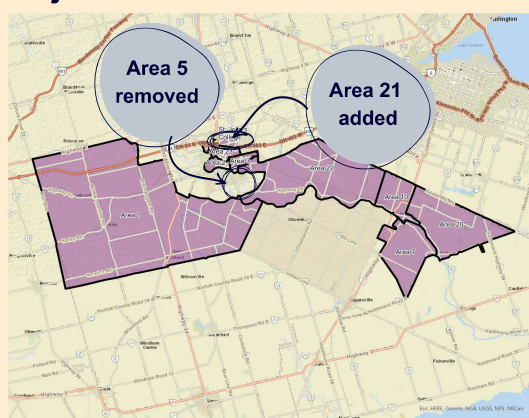
Idea for Consideration 2



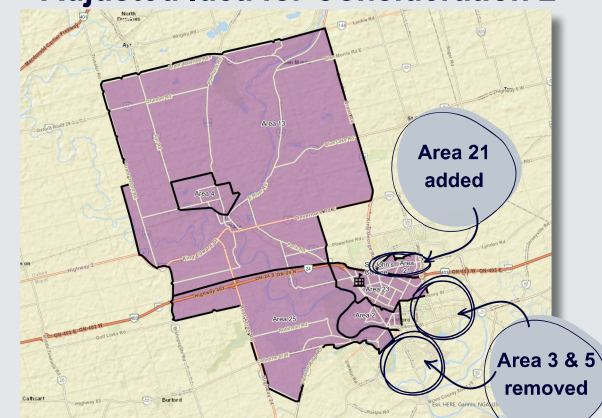
Adjusted Idea for Consideration 1a



Adjusted Idea for Consideration 1b



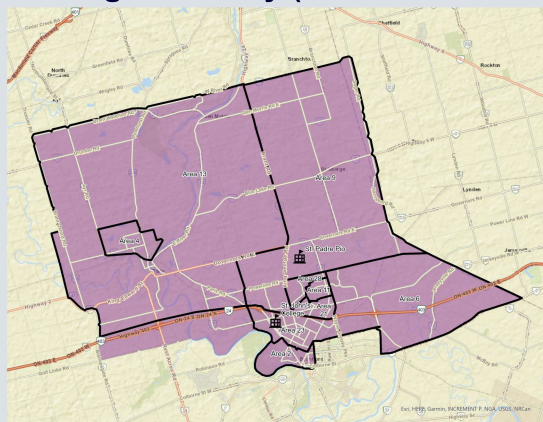
Adjusted Idea for Consideration 2



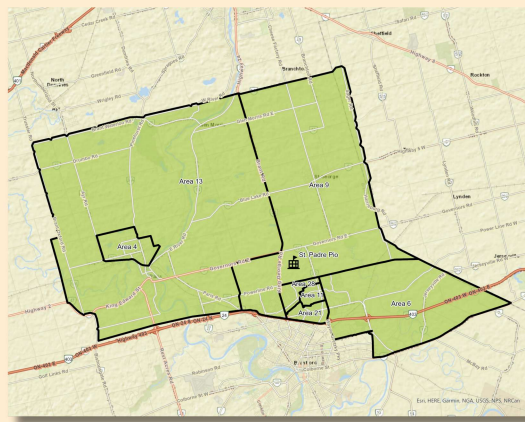
SECONDARY ATTENDANCE BOUNDARY REVIEW - NEW ST. PADRE PIO



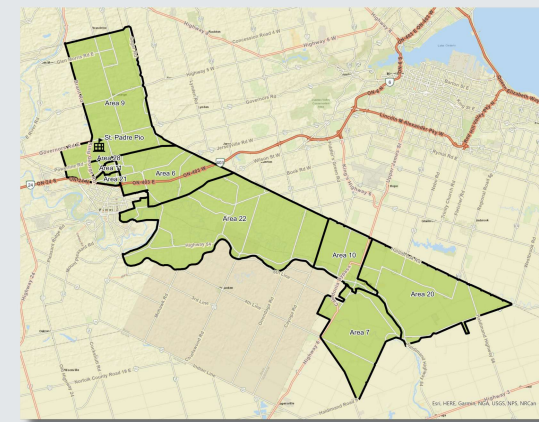
Existing Boundary (St. John's College)



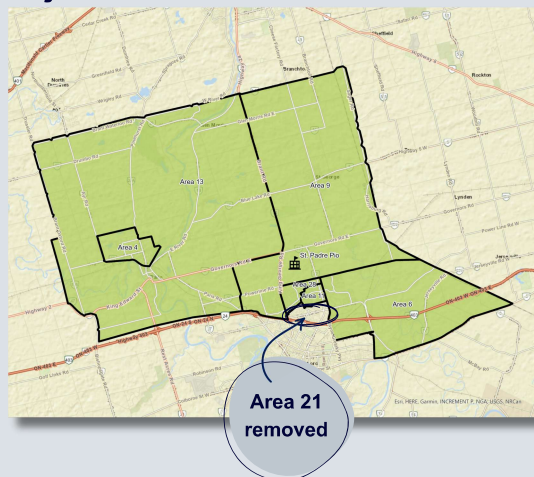
Idea for Consideration 1b



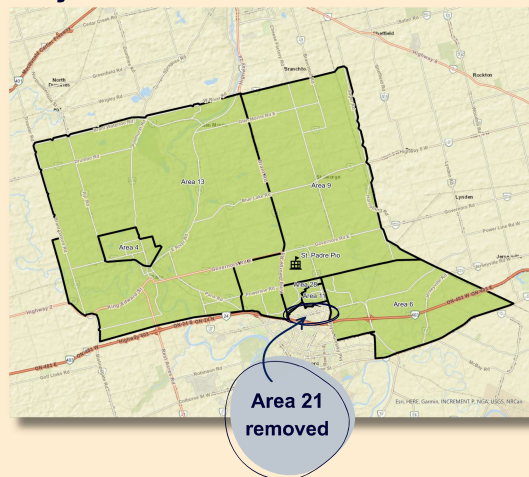
Idea for Consideration 2



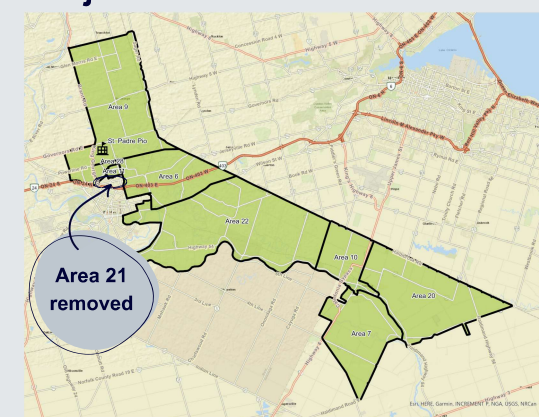
Adjusted Idea for Consideration 1a



Adjusted Idea for Consideration 1b








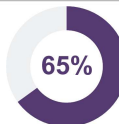
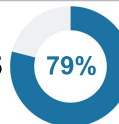
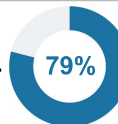
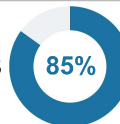
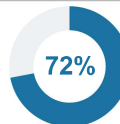

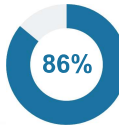
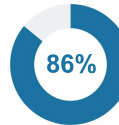
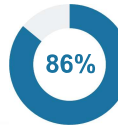
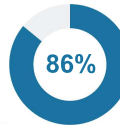
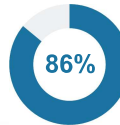


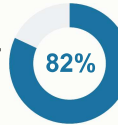
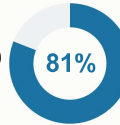



Adjusted Idea for Consideration 2



SECONDARY ATTENDANCE BOUNDARY REVIEW - SCENARIO TABLE



Overview By School	OTG	Portables	Existing Enrolment	Adjusted Idea 1a	Idea 1b	Adjusted Idea 1b	Idea 2	Adjusted Idea 2
Assumption College School	1,130	21	2,043 	1,530 	1,246 	1,324 	1,258 	1,520 
St. John's College	1,403	9	1,621 	908 	1,105 	1,114 	1,188 	1,013 
Holy Trinity CHS	1,193	-	1,021 	1,021 	1,021 	1,021 	1,021 	1,021 
New St. Padre Pio CSS	1,377	-	-	1,127 	1,214 	1,127 	1,119 	1,032 
Total	5,103	30	4,685 92%	4,586 90%	4,586 90%	4,586 90%	4,586 90%	4,586 90%



Note: Existing enrolment is based on current attendance, while scenarios reflect students' home school boundaries. Differences occur because scenarios reassign students to their home schools and exclude students living on First Nations reserves or outside the Board's jurisdiction.

