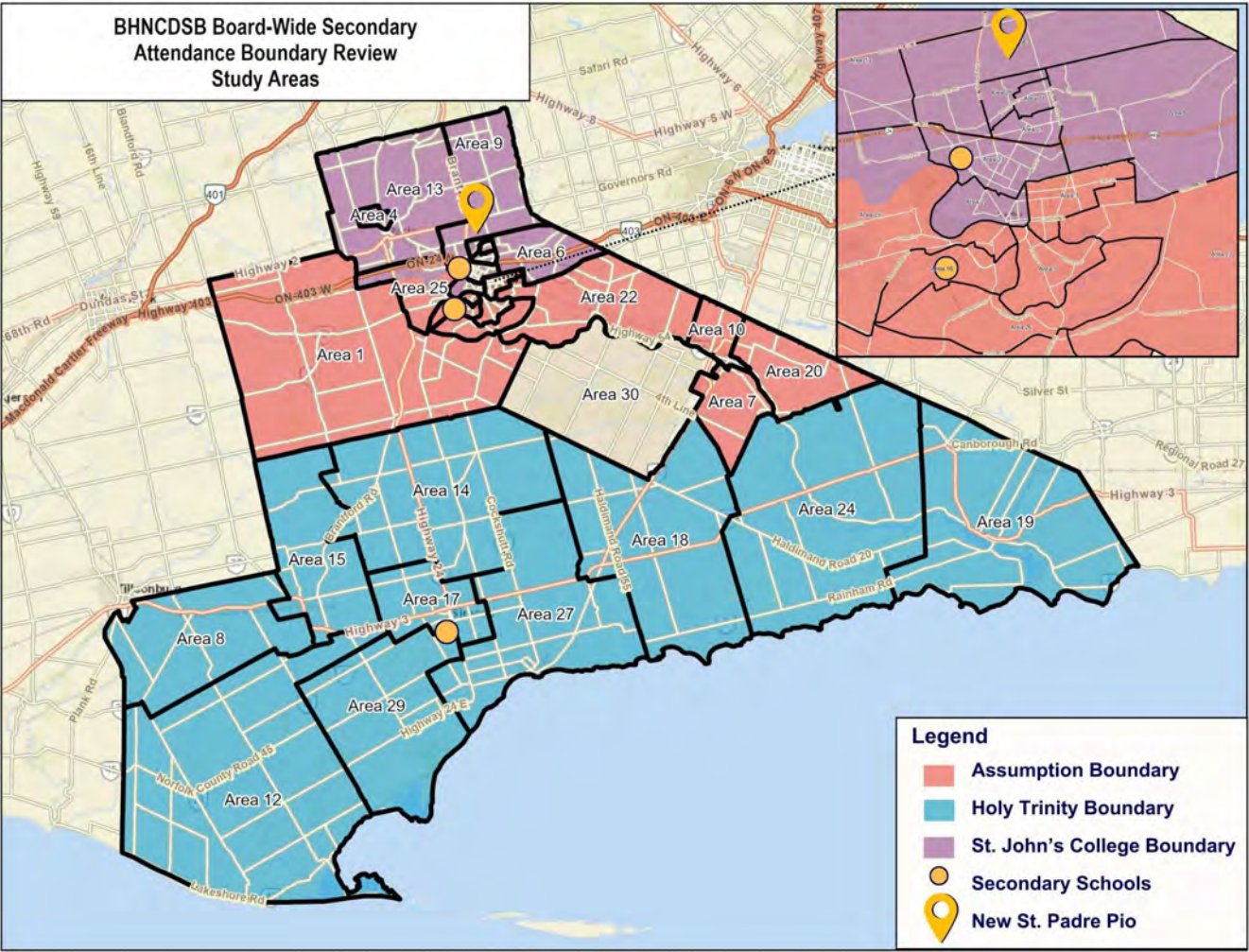
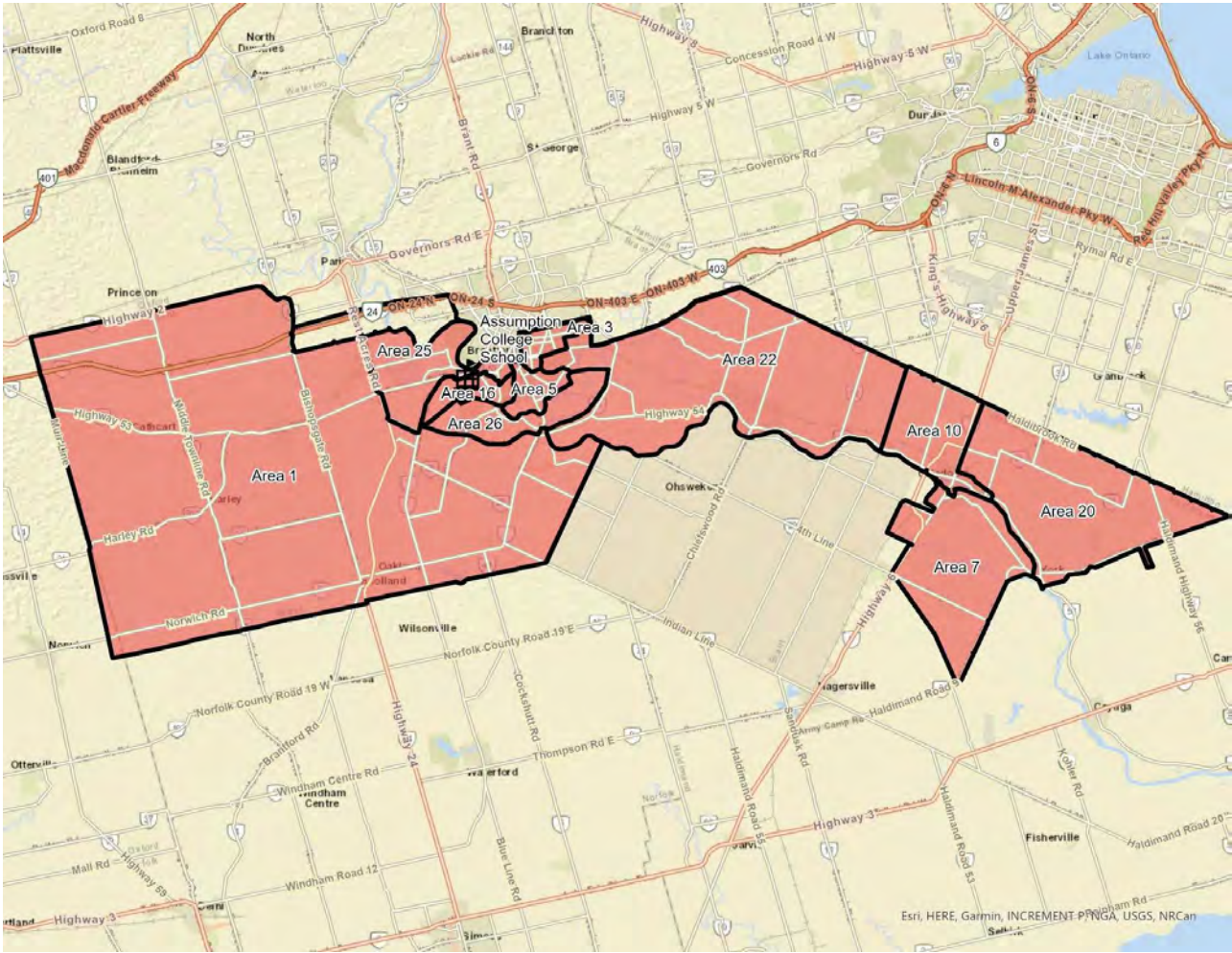


Existing Boundaries



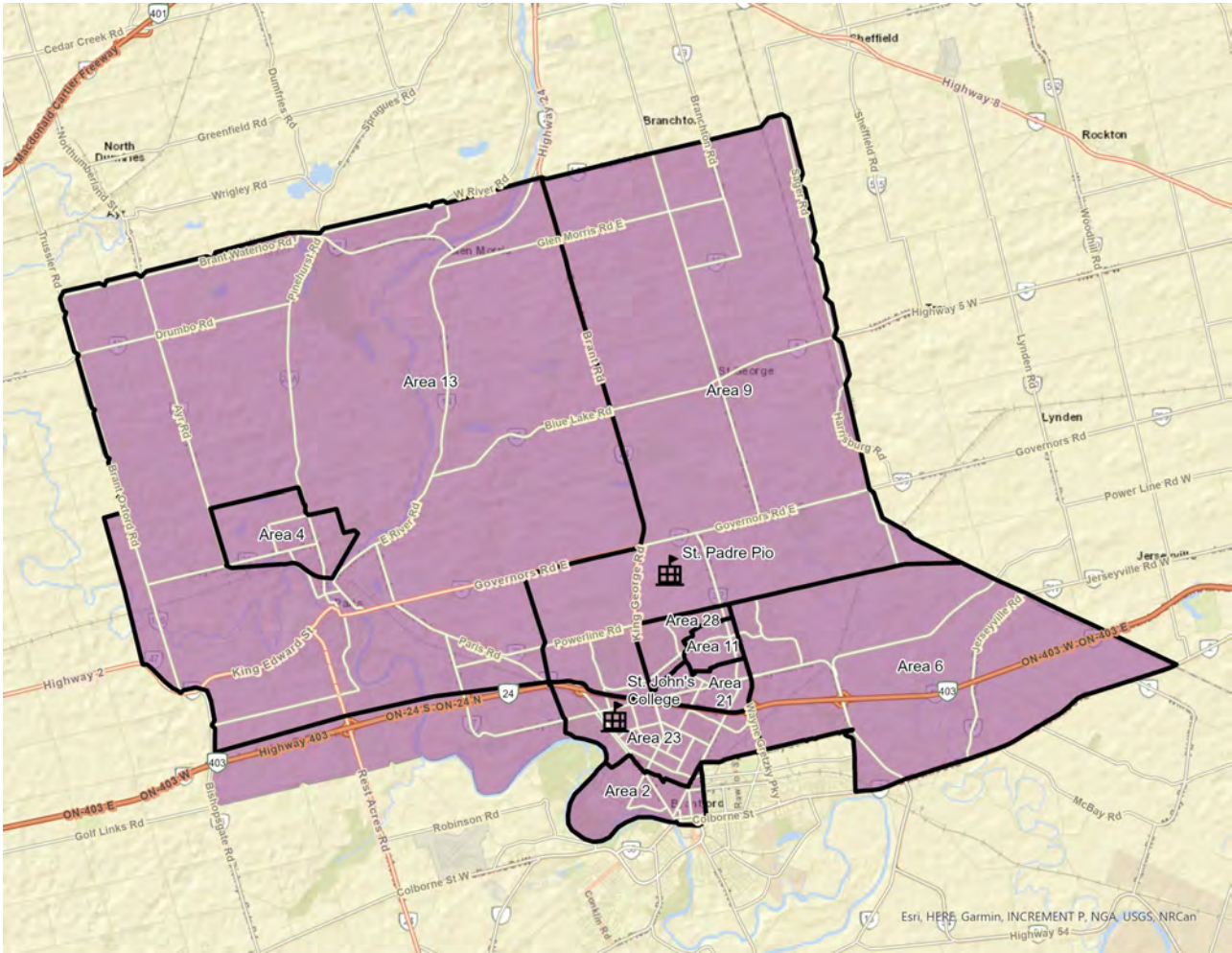
School	Study Areas That Make Up Boundary
Assumption College School	<ul style="list-style-type: none">Area 1 – Blessed SacramentArea 3 – Holy CrossArea 5 – Madonna Della LiberaArea 7 – Notre Dame (Caledonia)Area 10 – Pope FrancisArea 16 – St. GabrielArea 20 – St. Patrick (Caledonia)Area 22 – St. PeterArea 25 – St. TheresaArea 26 – St. BasilNew SW Brantford School
Holy Trinity Catholic High School	<ul style="list-style-type: none">Area 8 – Our Lady of Fatima (Courtland)Area 12 – Sacred Heart (Langton)Area 15 – St. Frances CabriniArea 17 – St. JosephArea 18 – St. Mary (Hagersville)Area 19 – St. Michael's (Dunnville)Area 24 – St. Stephen'sArea 27 – St. Cecilia'sArea 29 – St. Michael's (Walsh)
St. John's College School	<ul style="list-style-type: none">Area 2 – Christ the KingArea 4 – Holy FamilyArea 6 – Notre Dame (Brantford)Area 9 – Our Lady of ProvidenceArea 11 – ResurrectionArea 13 – Sacred Heart (Paris)Area 21 – St. Patrick (Brantford)Area 23 – St. PiusArea 28 – St. LeoNew Paris School
Six Nations and Mississaugas of the Credit First Nation Reserves (but not limited to)	<ul style="list-style-type: none">Area 30

Existing Boundaries – Assumption College



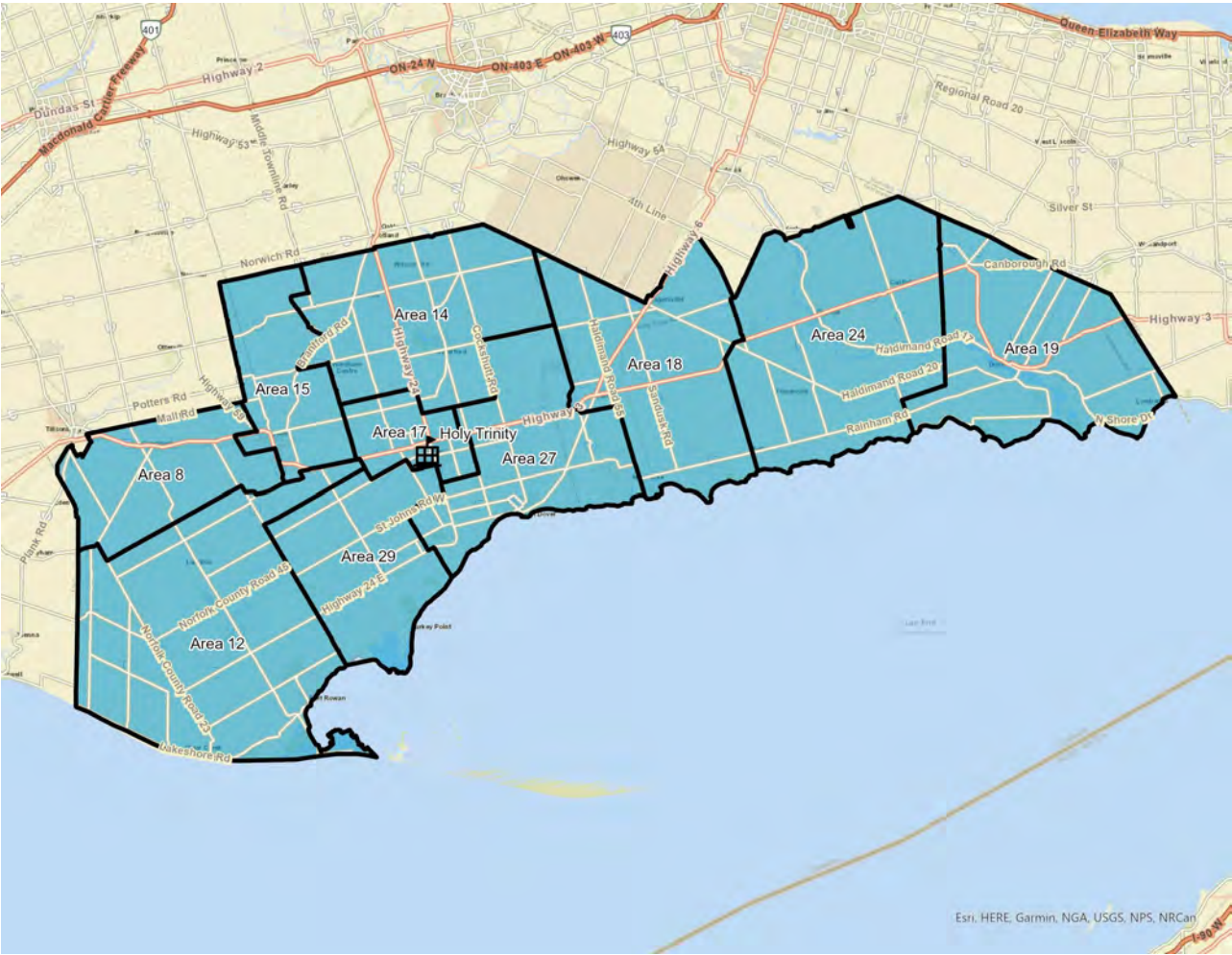
School	Study Areas That Make Up Boundary
Assumption College School	<ul style="list-style-type: none">Area 1 – Blessed SacramentArea 3 – Holy CrossArea 5 – Madonna Della LiberaArea 7 – Notre Dame (Caledonia)Area 10 – Pope FrancisArea 16 – St. GabrielArea 20 – St. Patrick (Caledonia)Area 22 – St. PeterArea 25 – St. TheresaArea 26 – St. BasilNew SW Brantford School

Existing Boundaries – St. John’s College



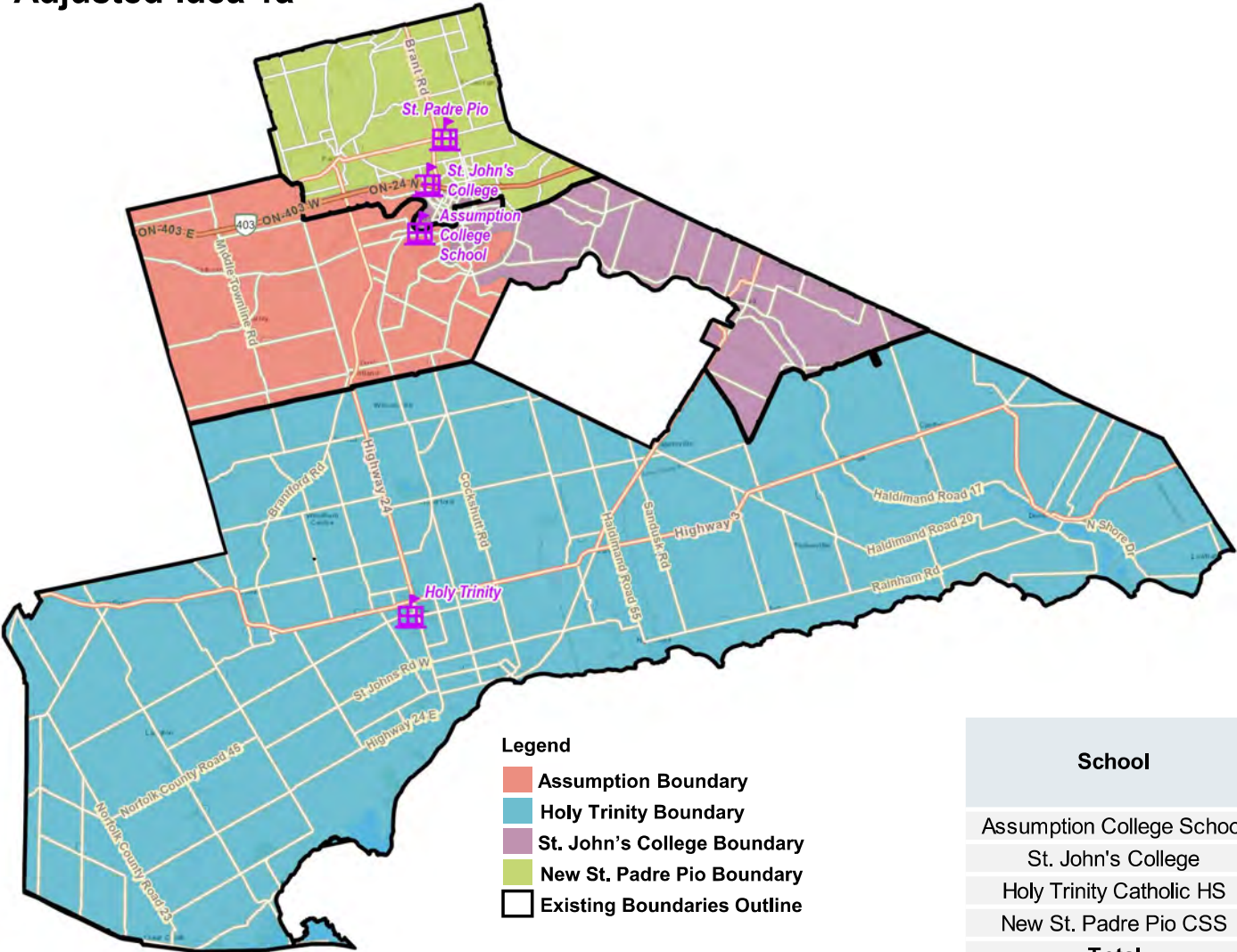
School	Study Areas That Make Up Boundary
St. John's College School	<ul style="list-style-type: none"> Area 2 – Christ the King Area 4 – Holy Family Area 6 – Notre Dame (Brantford) Area 9 – Our Lady of Providence Area 11 – Resurrection Area 13 – Sacred Heart (Paris) Area 21 – St. Patrick (Brantford) Area 23 – St. Pius Area 28 – St. Leo New Paris School

Existing Boundaries and All Ideas – Holy Trinity



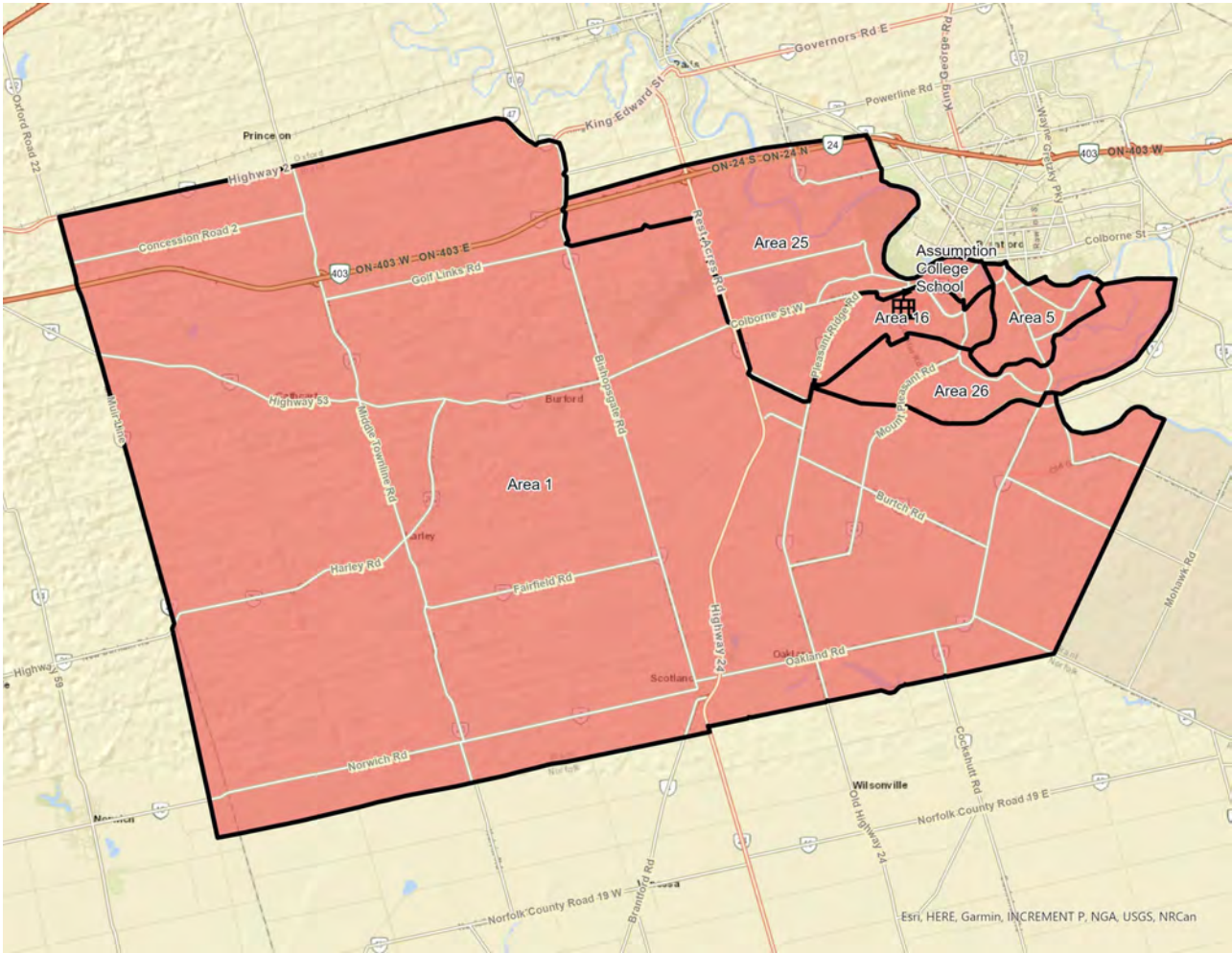
School	Study Areas That Make Up Boundary
Holy Trinity Catholic High School	<ul style="list-style-type: none">• Area 8 – Our Lady of Fatima (Courtland)• Area 12 – Sacred Heart (Langton)• Area 15 – St. Frances Cabrini• Area 17 – St. Joseph• Area 18 – St. Mary (Hagersville)• Area 19 – St. Michael's (Dunnville)• Area 24 – St. Stephen's• Area 27 – St. Cecilia's• Area 29 – St. Michael's (Walsh)

Adjusted Idea 1a



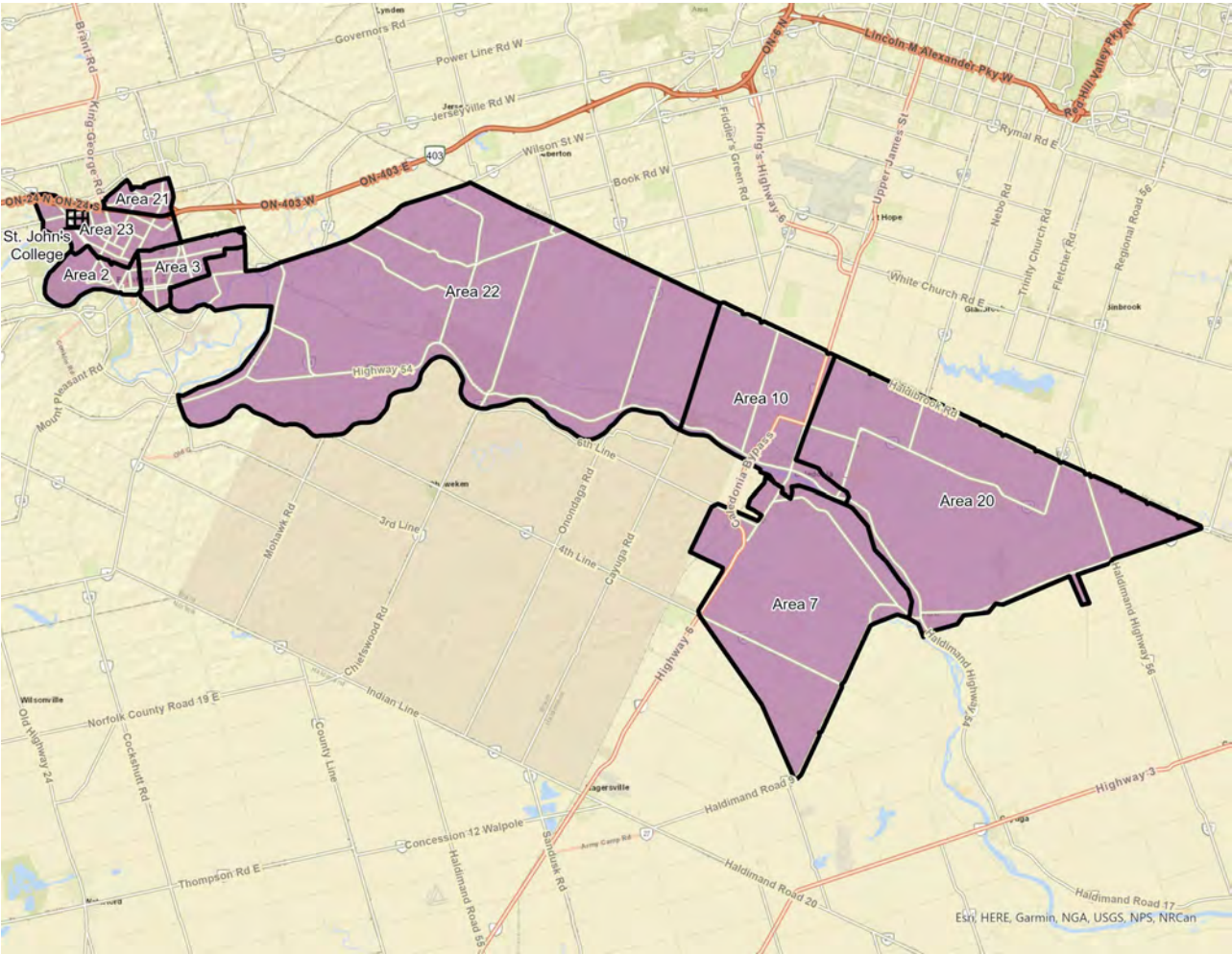
School	On-the-Ground Capacity	Existing (2025/26)			Adjusted Idea 1a		
		Enrol	Utz	Ports	Enrol	Utz	Ports
Assumption College School	1,130	2,043	181%	21	1,530	135%	17
St. John's College	1,403	1,621	116%	9	908	65%	0
Holy Trinity Catholic HS	1,193	1,021	86%	0	1,021	86%	0
New St. Padre Pio CSS	1,377	0	0%	0	1,127	82%	0
Total	5,103	4,685	92%	30	4,586	90%	17

Adjusted Idea 1a – Assumption College



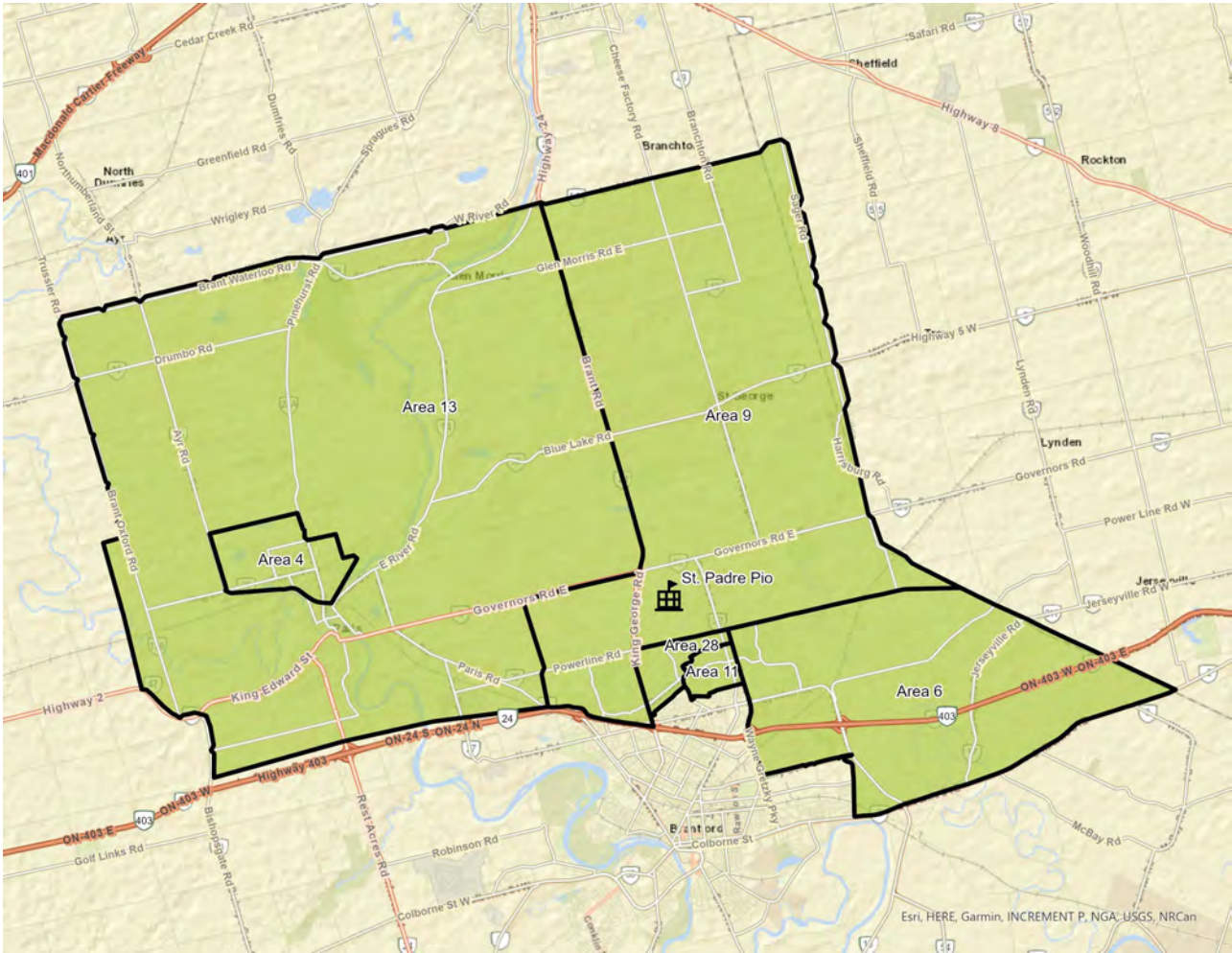
School	Study Areas That Make Up Boundary
Assumption College School	<ul style="list-style-type: none">• Area 1 – Blessed Sacrament• Area 5 – Madonna Della Libera• Area 16 – St. Gabriel• Area 25 – St. Theresa• Area 26 – St. Basil

Adjusted Idea 1a – St. John’s College



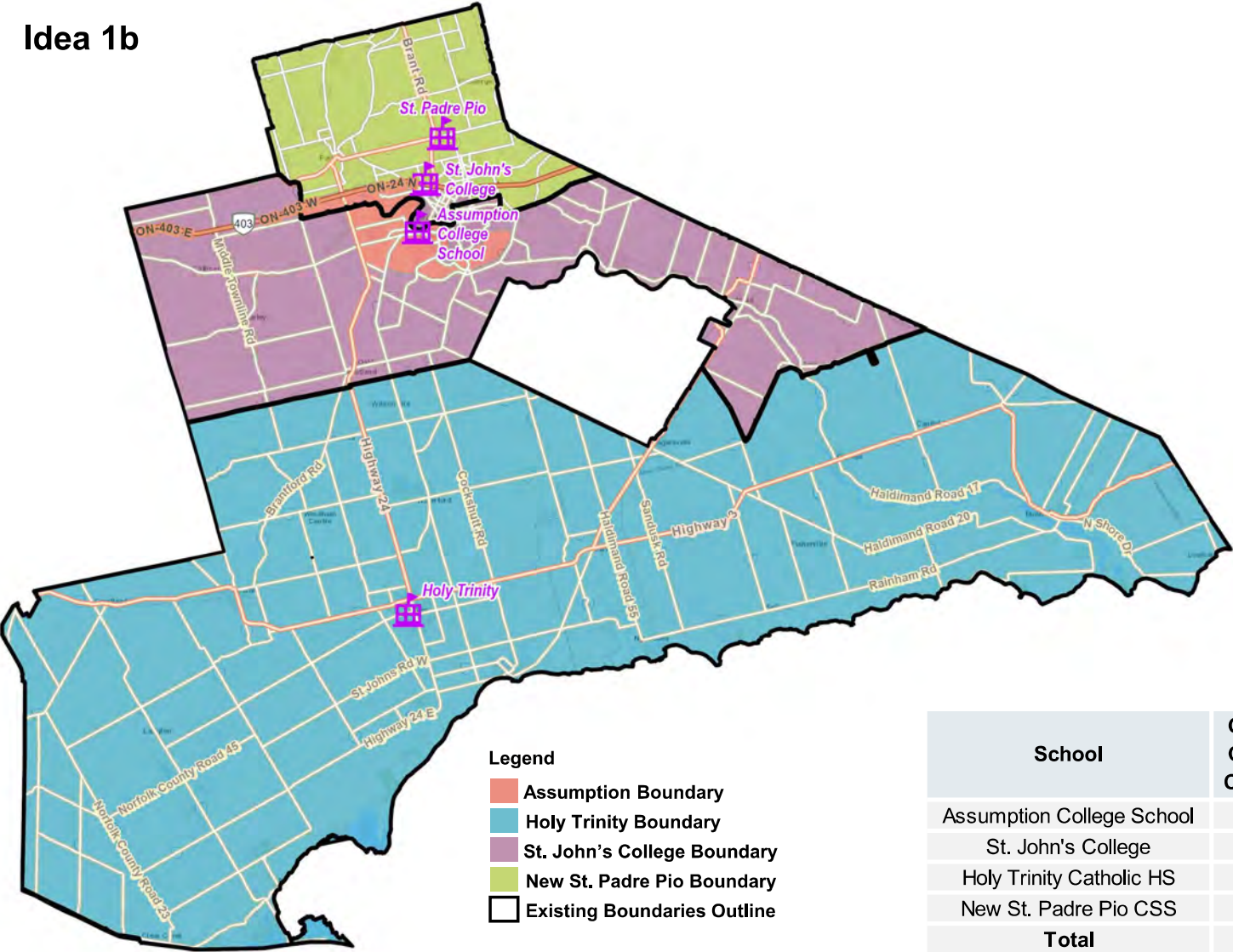
School	Study Areas That Make Up Boundary
St. John's College School	<ul style="list-style-type: none">• Area 2 – Christ the King• Area 3 – Holy Cross• Area 7 – Notre Dame (Caledonia)• Area 10 – Pope Francis• Area 20 – St. Patrick (Caledonia)• Area 22 – St. Peter

Adjusted Idea 1a – New St. Padre Pio



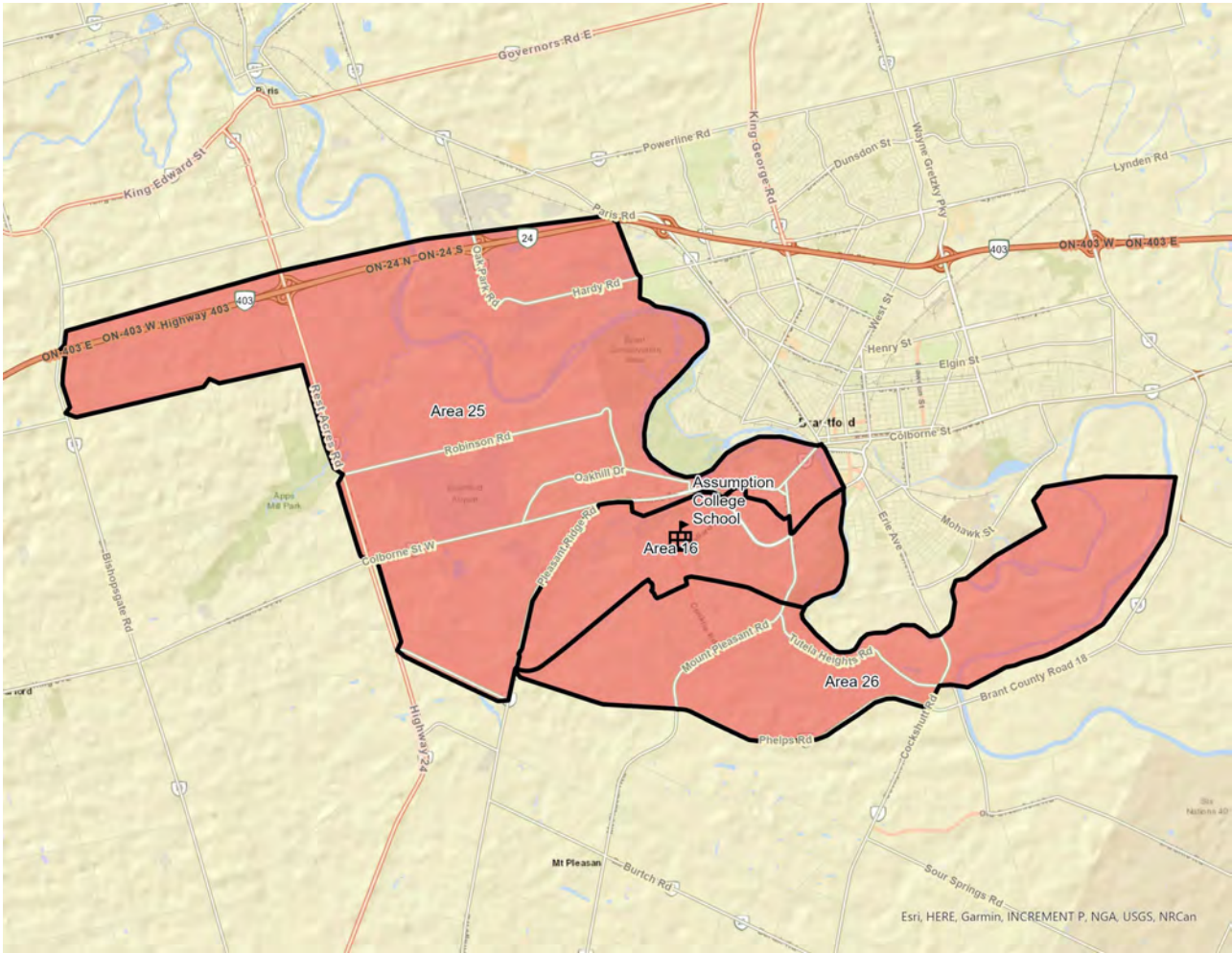
School	Study Areas That Make Up Boundary
New St. Padre Pio Catholic Secondary School	<ul style="list-style-type: none">• Area 4 – Holy Family• Area 6 – Notre Dame (Brantford)• Area 9 – Our Lady of Providence• Area 11 – Resurrection• Area 13 – Sacred Heart (Paris)• Area 28 – St. Leo• New Paris School

Idea 1b



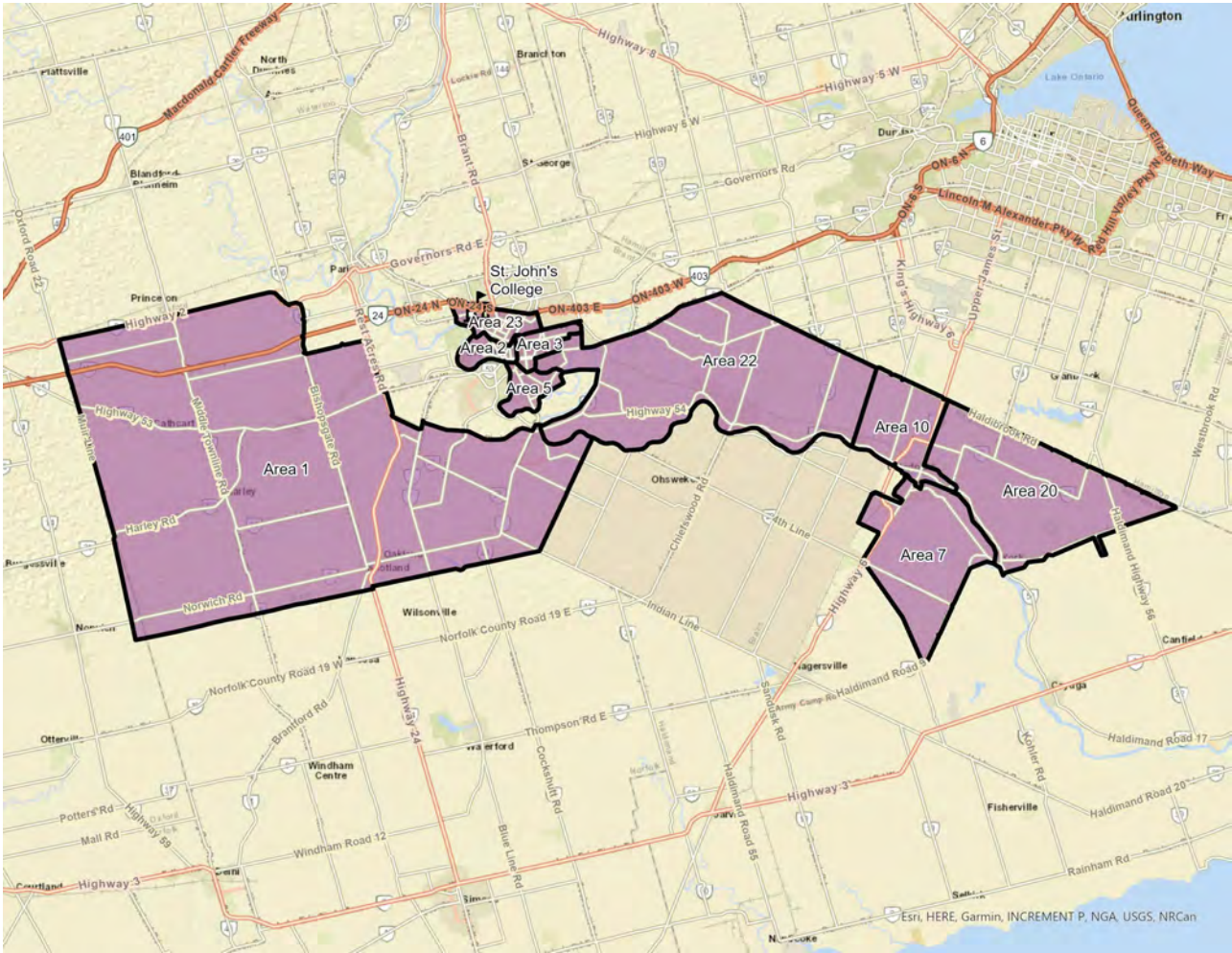
School	On-the-Ground Capacity	Existing (2025/26)			Idea 1b		
		Enrol	Utz	Ports	Enrol	Utz	Ports
Assumption College School	1,130	2,043	181%	21	1,246	110%	5
St. John's College	1,403	1,621	116%	9	1,105	79%	0
Holy Trinity Catholic HS	1,193	1,021	86%	0	1,021	86%	0
New St. Padre Pio CSS	1,377	0	0%	0	1,214	88%	0
Total	5,103	4,685	92%	30	4,586	90%	5

Idea 1b – Assumption College



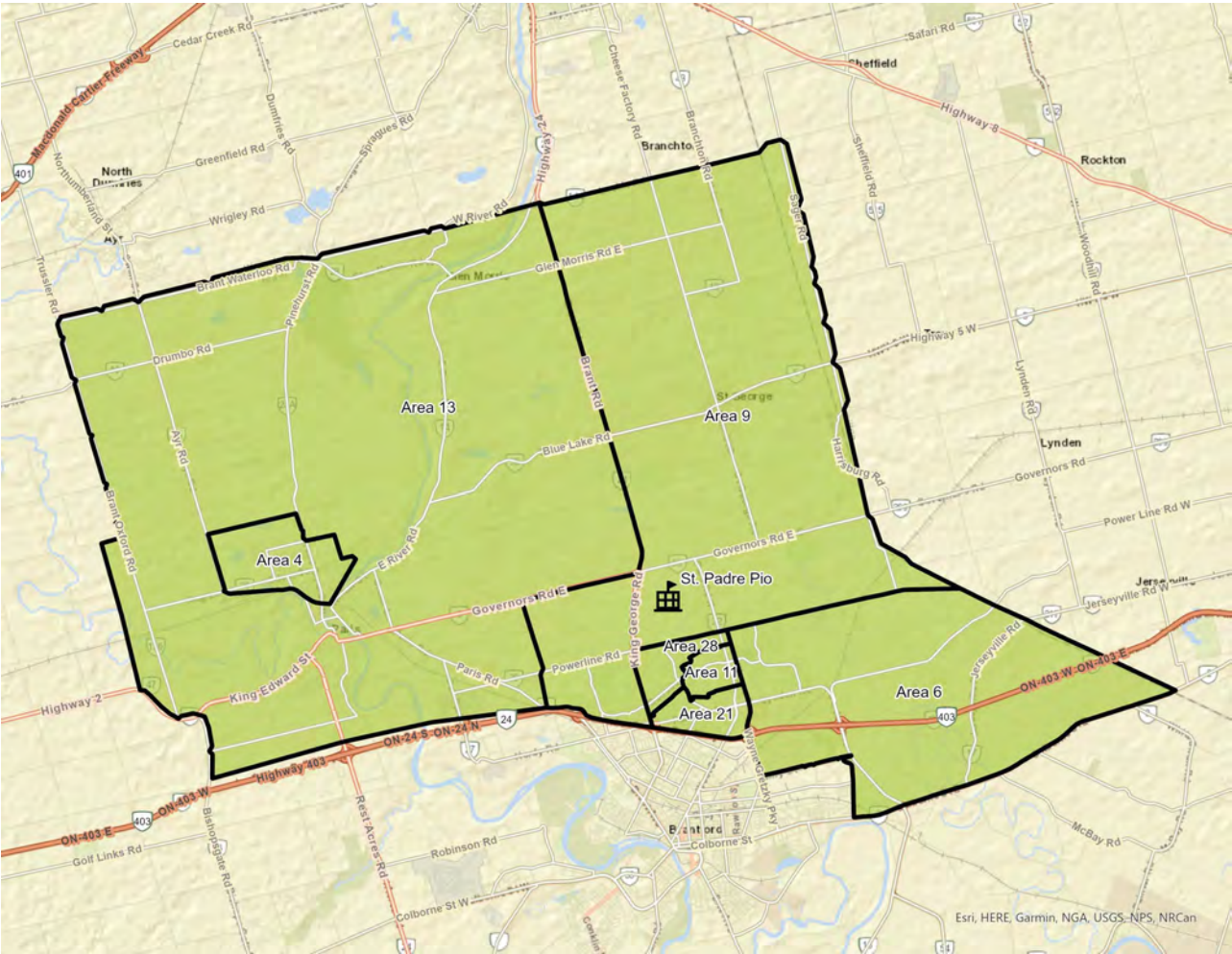
School	Study Areas That Make Up Boundary
Assumption College School	<ul style="list-style-type: none">Area 16 – St. GabrielArea 25 – St. TheresaArea 26 – St. Basil

Idea 1b – St. John’s College



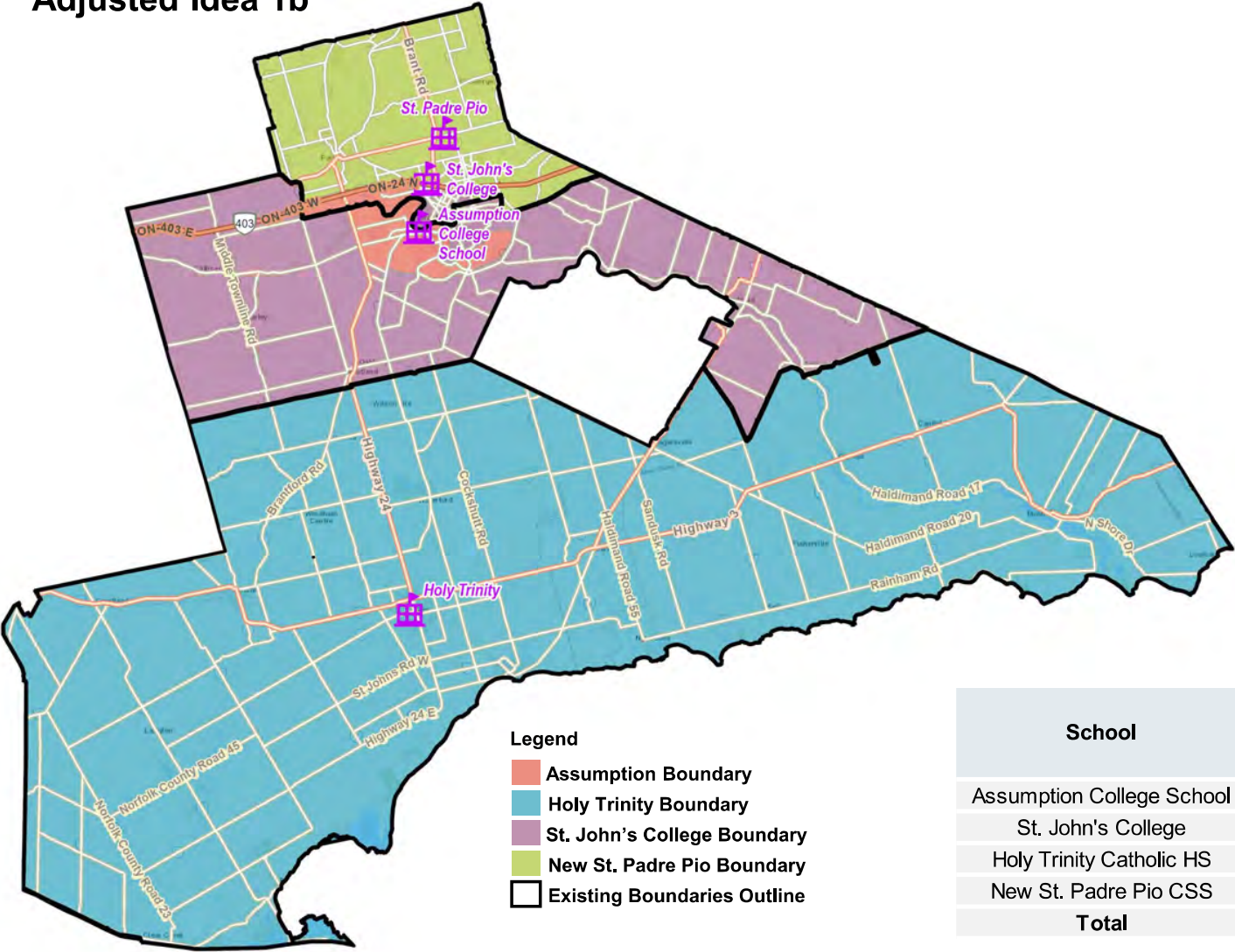
School	Study Areas That Make Up Boundary
St. John's College School	<ul style="list-style-type: none">• Area 1 – Blessed Sacrament• Area 2 – Christ the King• Area 3 – Holy Cross• Area 5 – Madonna Della Libera• Area 7 – Notre Dame (Caledonia)• Area 10 – Pope Francis• Area 20 – St. Patrick (Caledonia)• Area 22 – St. Peter• Area 23 – St. Pius

Idea 1b – New St. Padre Pio



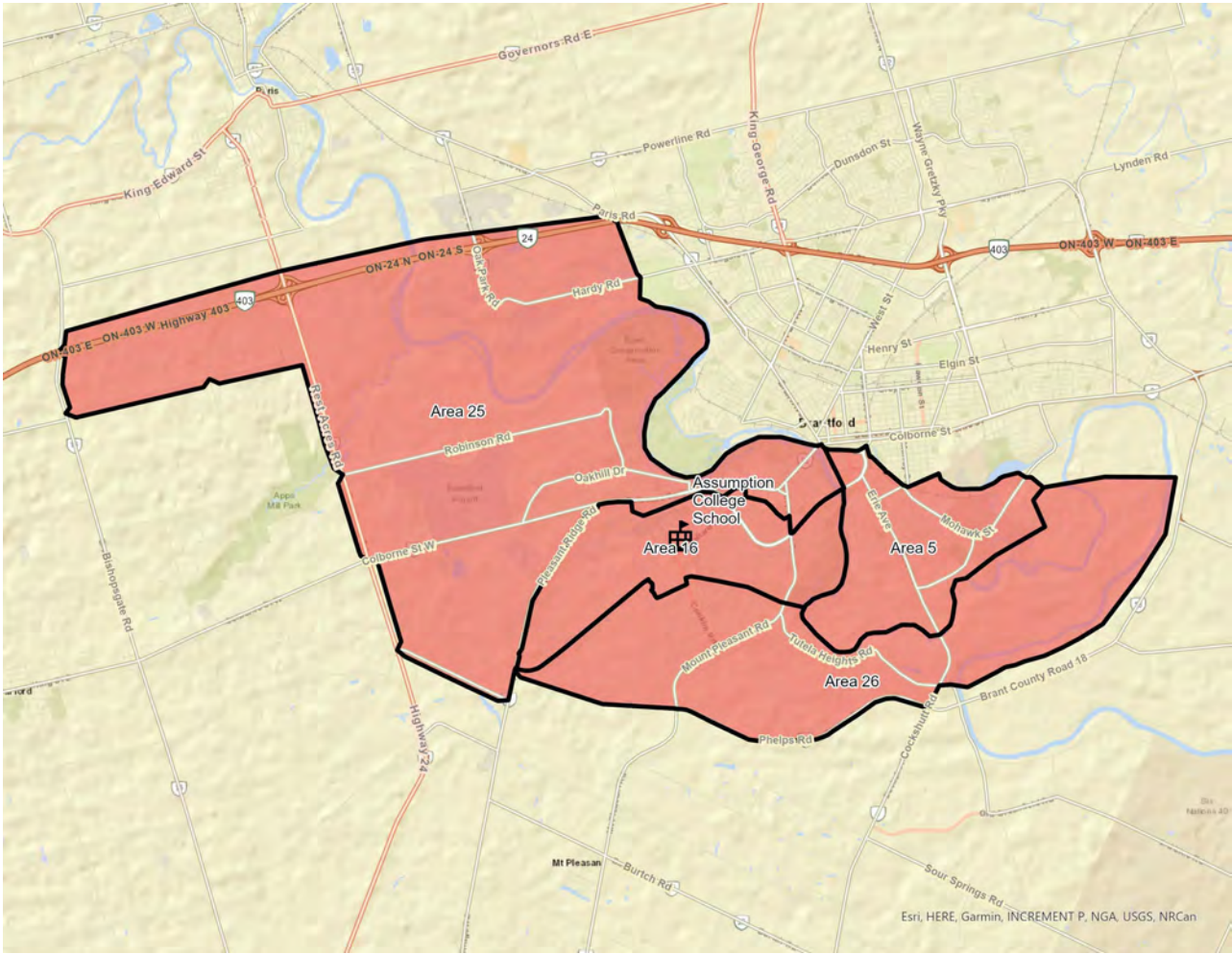
School	Study Areas That Make Up Boundary
New St. Padre Pio Catholic Secondary School	<ul style="list-style-type: none">• Area 4 – Holy Family• Area 6 – Notre Dame (Brantford)• Area 9 – Our Lady of Providence• Area 11 – Resurrection• Area 13 – Sacred Heart (Paris)• Area 21 – St. Patrick (Brantford)• Area 28 – St. Leo

Adjusted Idea 1b



School	On-the-Ground Capacity	Existing (2025/26)			Adjusted Idea 1b		
		Enrol	Utz	Ports	Enrol	Utz	Ports
Assumption College School	1,130	2,043	181%	21	1,324	117%	8
St. John's College	1,403	1,621	116%	9	1,114	79%	0
Holy Trinity Catholic HS	1,193	1,021	86%	0	1,021	86%	0
New St. Padre Pio CSS	1,377	0	0%	0	1,127	82%	0
Total	5,103	4,685	92%	30	4,586	90%	8

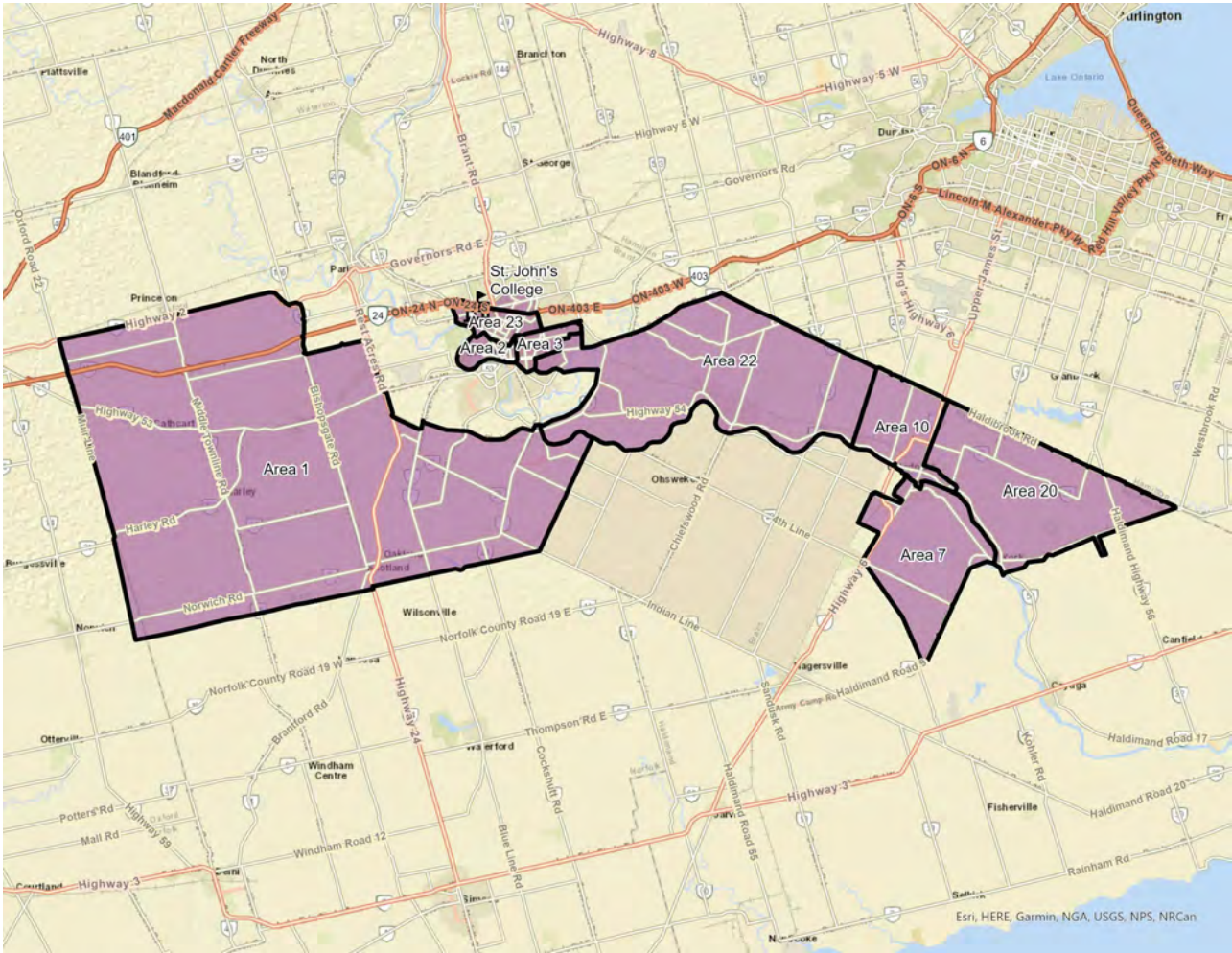
Adjusted Idea 1b – Assumption College



Adjustment(s) Made:
Area 5 – Madonna Della Libera apart of boundary

School	Study Areas That Make Up Boundary
Assumption College School	<ul style="list-style-type: none">Area 5 – Madonna Della LiberaArea 16 – St. GabrielArea 25 – St. TheresaArea 26 – St. Basil

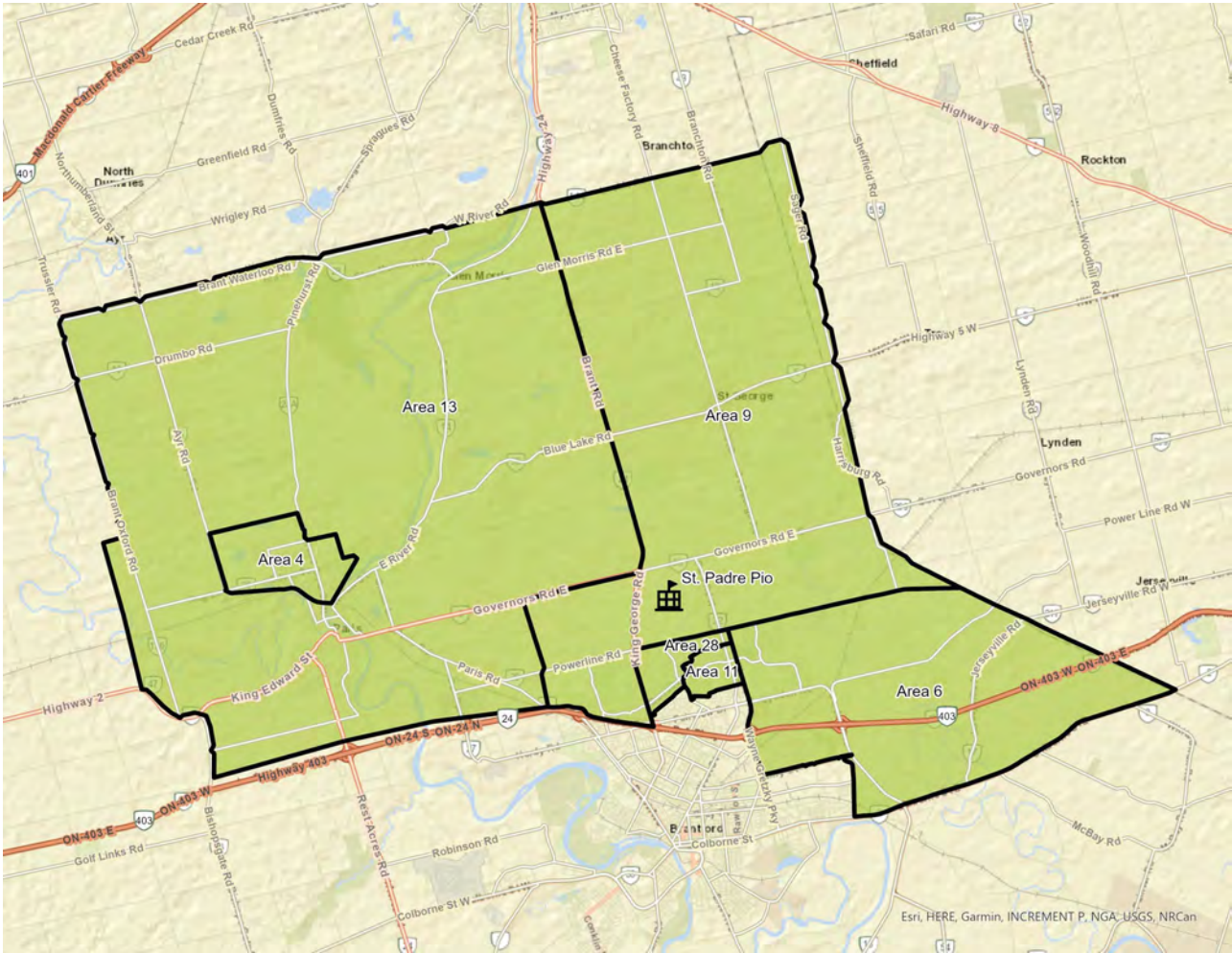
Adjusted Idea 1b – St. John’s College



Adjustment(s) Made:
Area 5 – Madonna Della Libera not apart of boundary
Area 21 – St. Patrick’s (Brantford) apart of boundary

School	Study Areas That Make Up Boundary
St. John's College School	<ul style="list-style-type: none">Area 1 – Blessed SacramentArea 2 – Christ the KingArea 3 – Holy CrossArea 7 – Notre Dame (Caledonia)Area 10 – Pope FrancisArea 20 – St. Patrick (Caledonia)Area 21 – St. Patrick (Brantford)Area 22 – St. Peter

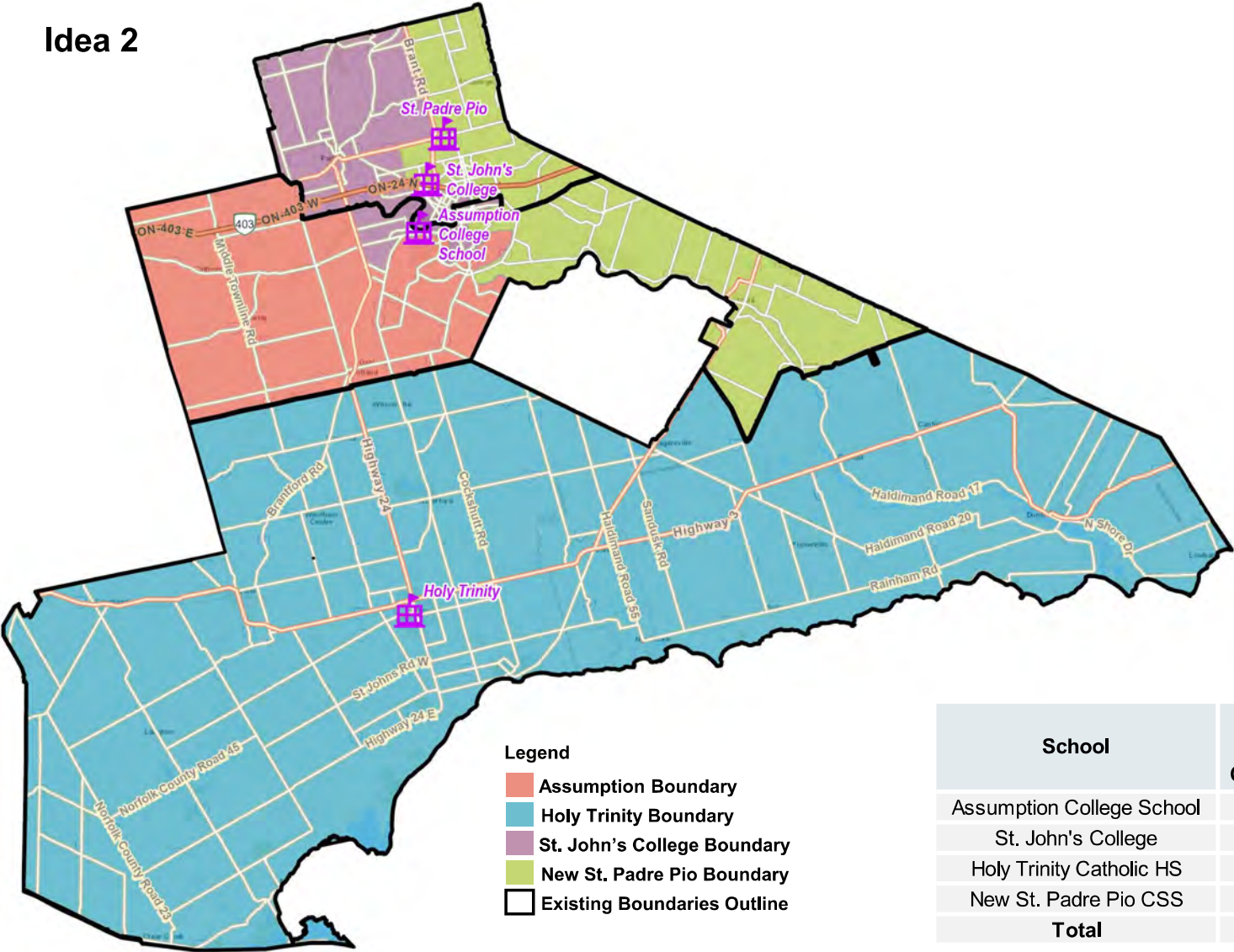
Adjusted Idea 1b – New St. Padre Pio



Adjustment(s) Made:
Area 21 – St. Patrick’s (Brantford) not apart of boundary

School	Study Areas That Make Up Boundary
New St. Padre Pio Catholic Secondary School	<ul style="list-style-type: none">Area 4 – Holy FamilyArea 6 – Notre Dame (Brantford)Area 9 – Our Lady of ProvidenceArea 11 – ResurrectionArea 13 – Sacred Heart (Paris)Area 28 – St. LeoNew Paris School

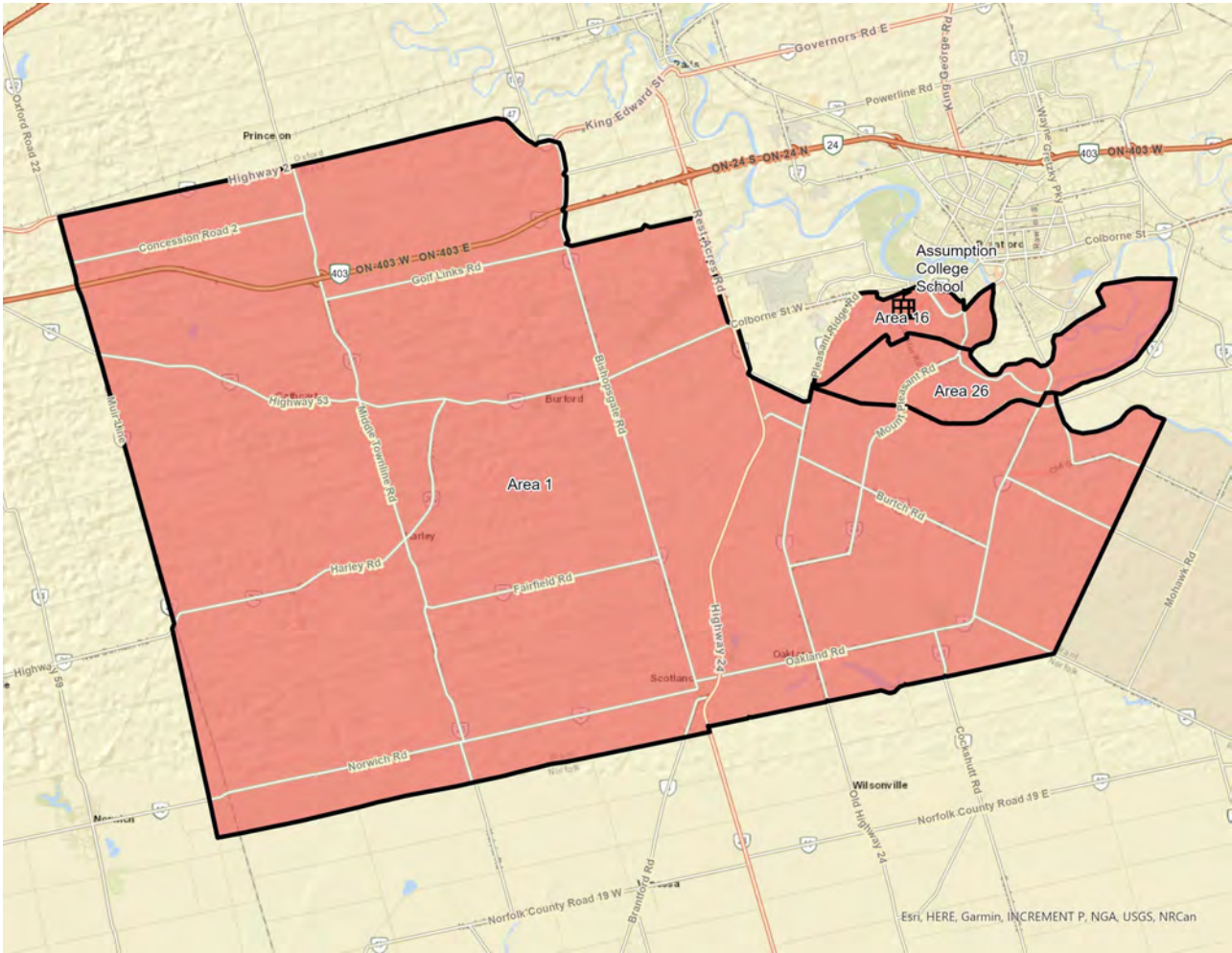
Idea 2



- Legend
- Assumption Boundary
 - Holy Trinity Boundary
 - St. John's College Boundary
 - New St. Padre Pio Boundary
 - Existing Boundaries Outline

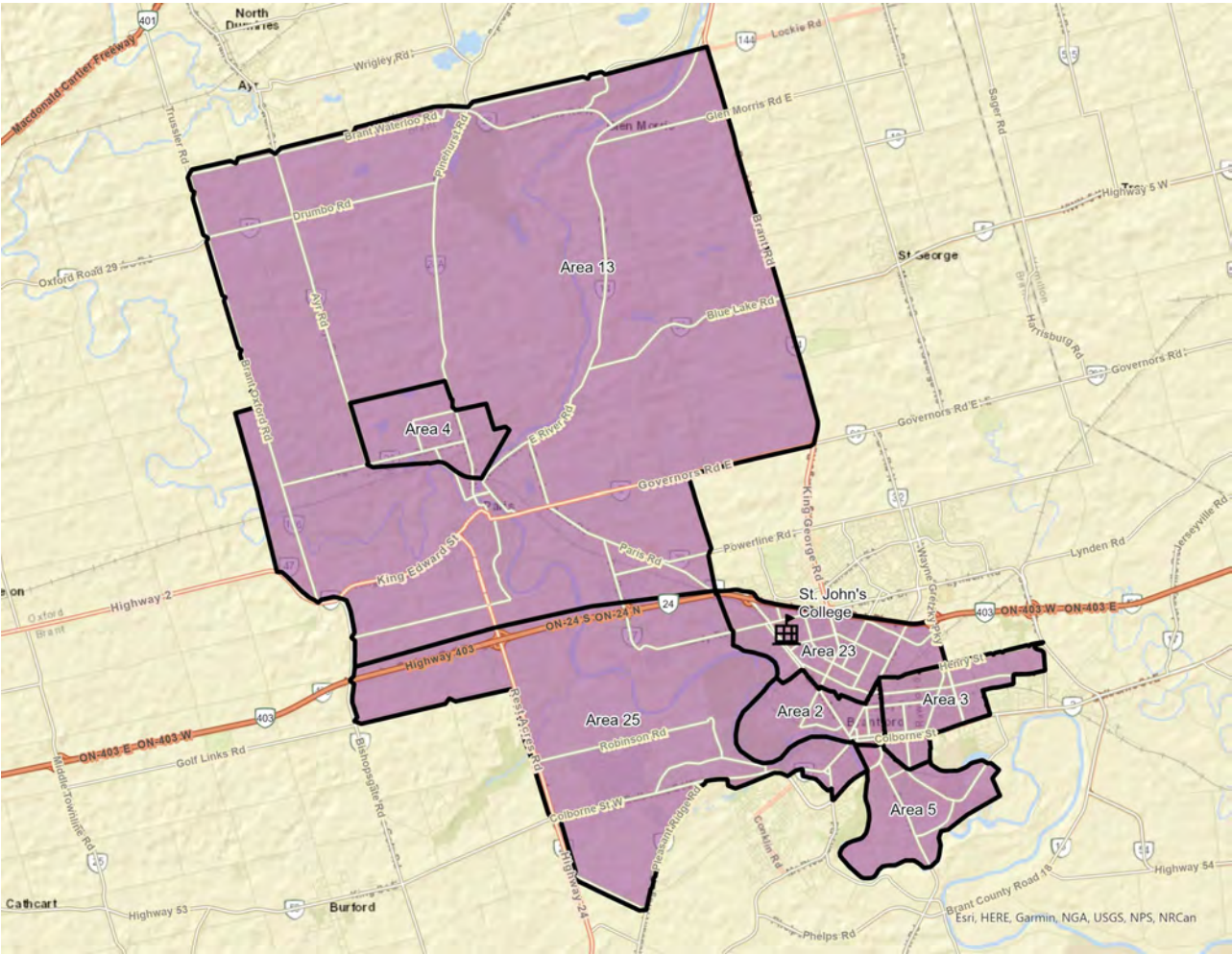
School	On-the-Ground Capacity	Existing (2025/26)			Idea 2		
		Enrol	Utz	Ports	Enrol	Utz	Ports
Assumption College School	1,130	2,043	181%	21	1,258	111%	6
St. John's College	1,403	1,621	116%	9	1,188	85%	0
Holy Trinity Catholic HS	1,193	1,021	86%	0	1,021	86%	0
New St. Padre Pio CSS	1,377	0	0%	0	1,119	81%	0
Total	5,103	4,685	92%	30	4,586	90%	6

Idea 2 – Assumption College



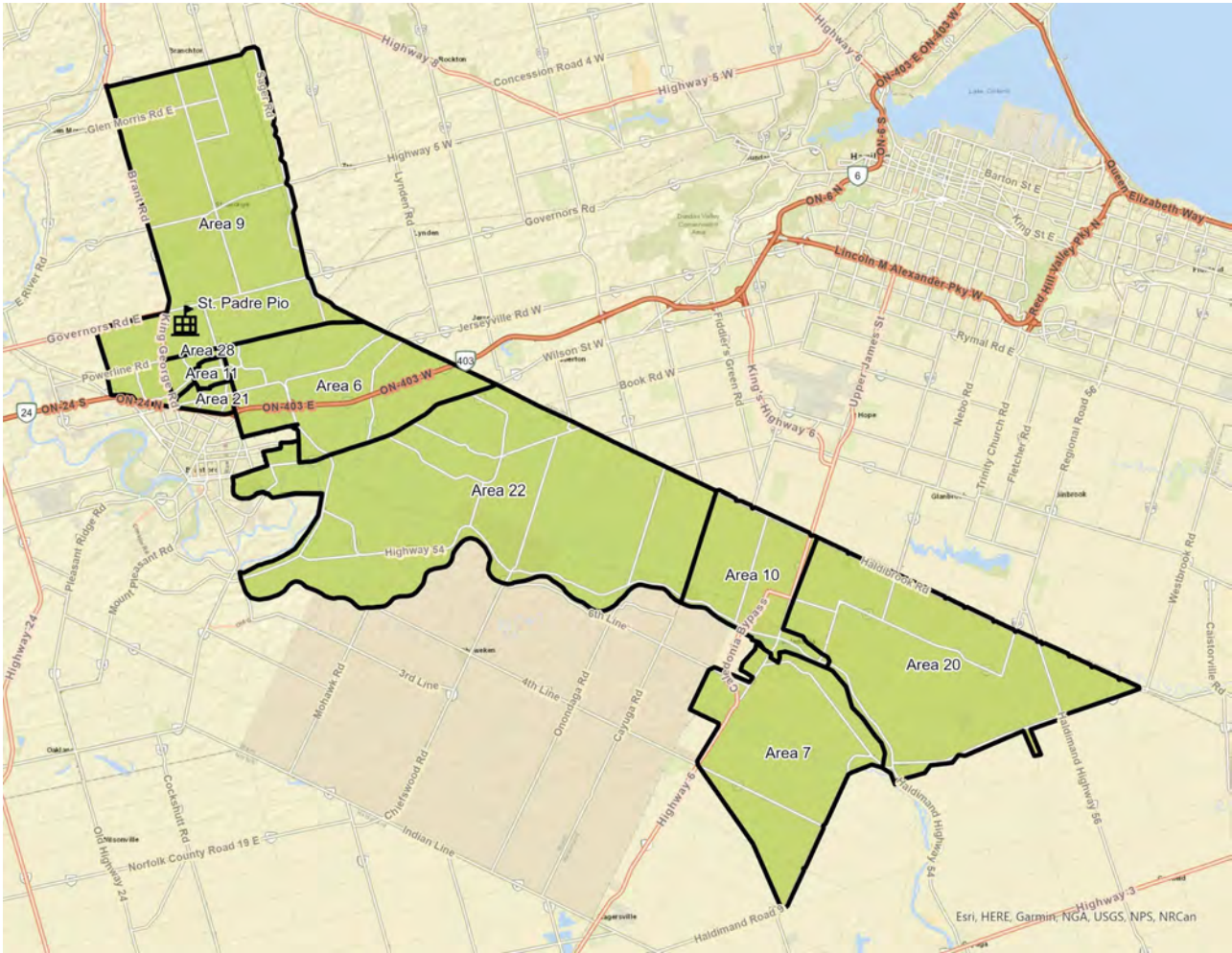
School	Study Areas That Make Up Boundary
Assumption College School	<ul style="list-style-type: none">Area 1 – Blessed SacramentArea 16 – St. GabrielArea 26 – St. Basil

Idea 2 – St. John’s College



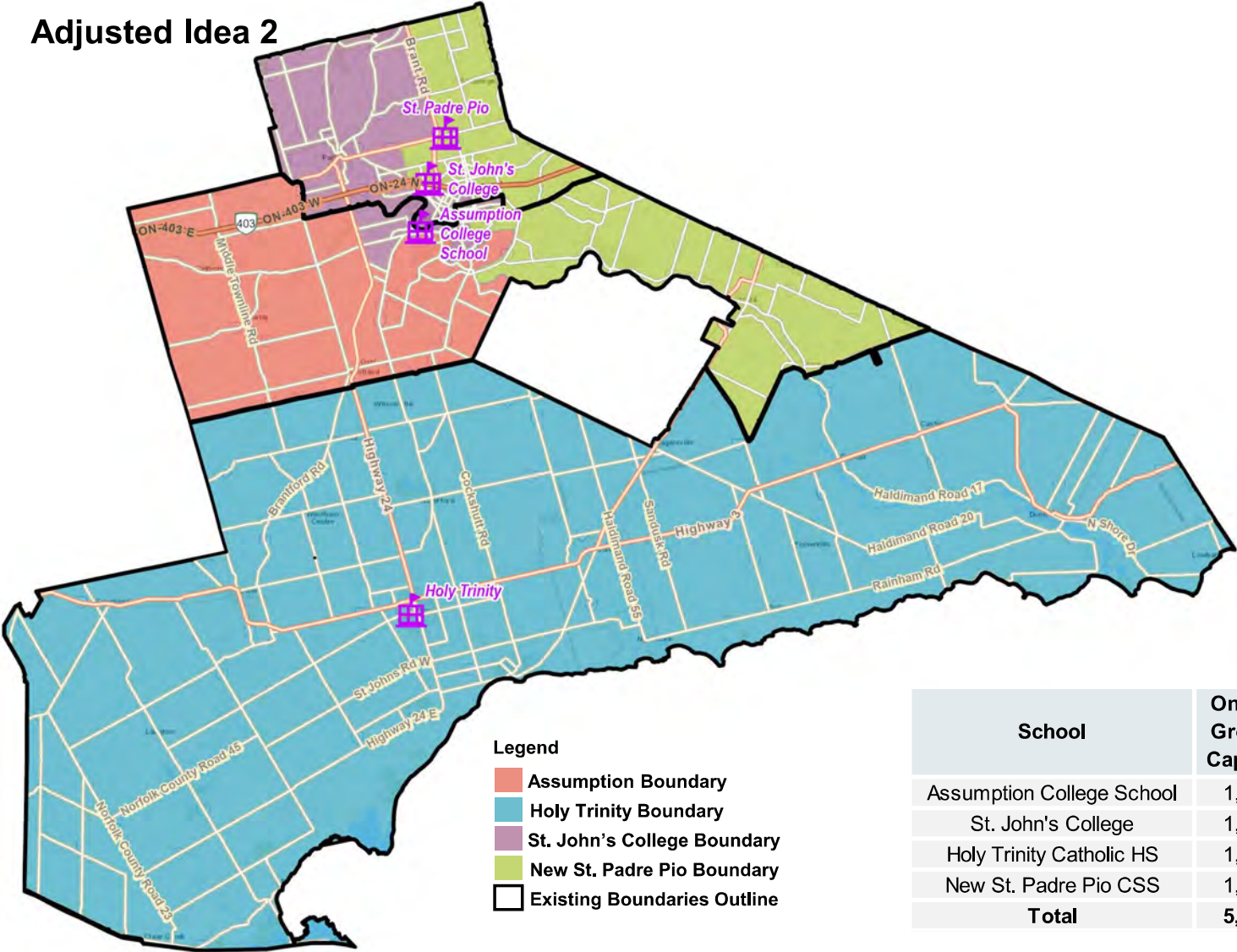
School	Study Areas That Make Up Boundary
St. John's College School	<ul style="list-style-type: none">• Area 2 – Christ the King• Area 3 – Holy Cross• Area 4 – Holy Family• Area 5 – Madonna Della Libera• Area 13 – Sacred Heart (Paris)• Area 23 – St. Pius• Area 25 – St. Theresa

Idea 2 – New St. Padre Pio



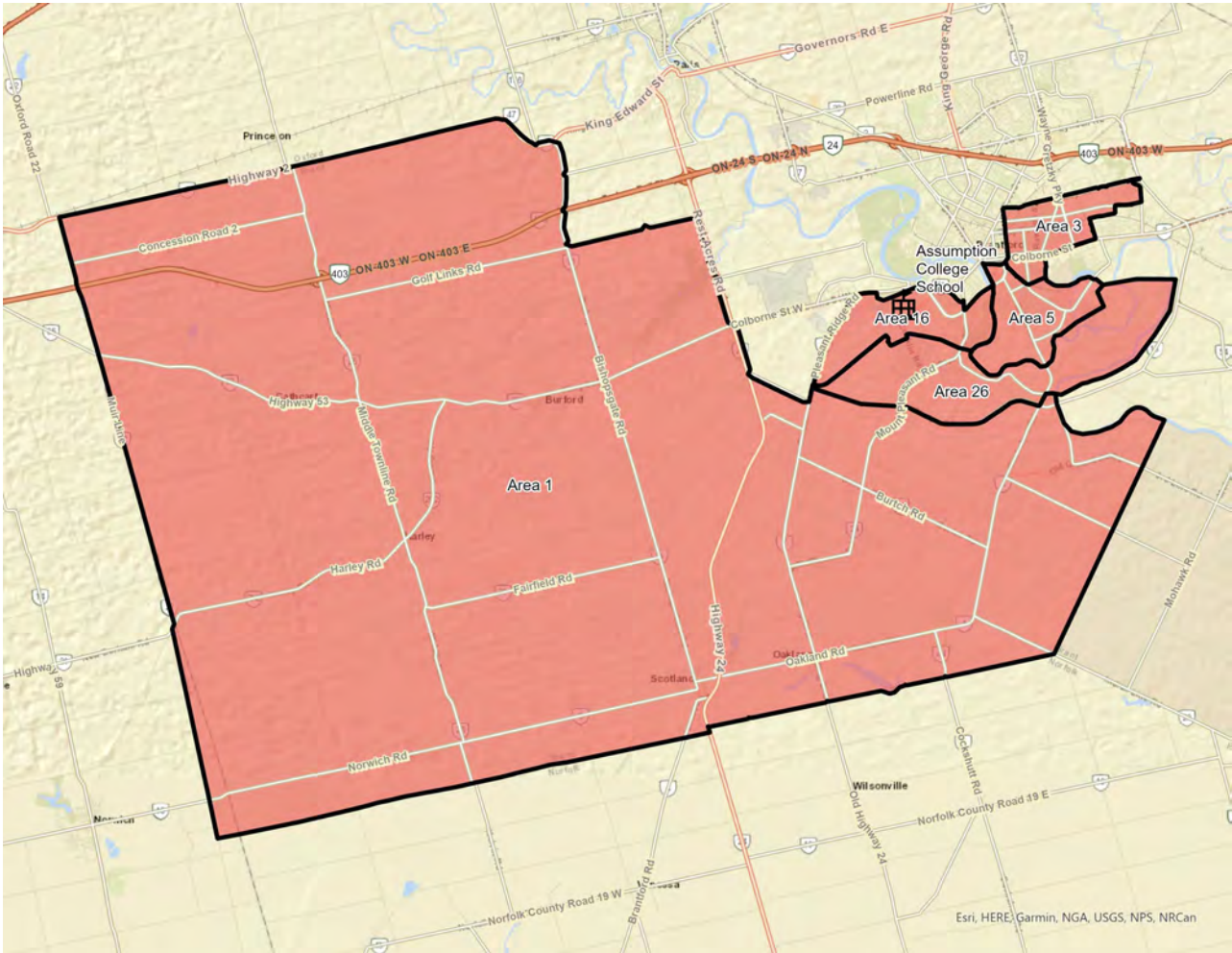
School	Study Areas That Make Up Boundary
New St. Padre Pio Catholic Secondary School	<ul style="list-style-type: none">• Area 6 – Notre Dame (Brantford)• Area 7 – Notre Dame (Caledonia)• Area 9 – Our Lady of Providence• Area 10 – Pope Francis• Area 11 – Resurrection• Area 20 – St. Patrick (Caledonia)• Area 21 – St. Patrick (Brantford)• Area 22 – St. Peter• Area 28 – St. Leo

Adjusted Idea 2



School	On-the-Ground Capacity	Existing (2025/26)			Adjusted Idea 2		
		Enrol	Utz	Ports	Enrol	Utz	Ports
Assumption College School	1,130	2,043	181%	21	1,520	134%	17
St. John's College	1,403	1,621	116%	9	1,013	72%	0
Holy Trinity Catholic HS	1,193	1,021	86%	0	1,021	86%	0
New St. Padre Pio CSS	1,377	0	0%	0	1,032	75%	0
Total	5,103	4,685	92%	30	4,586	90%	17

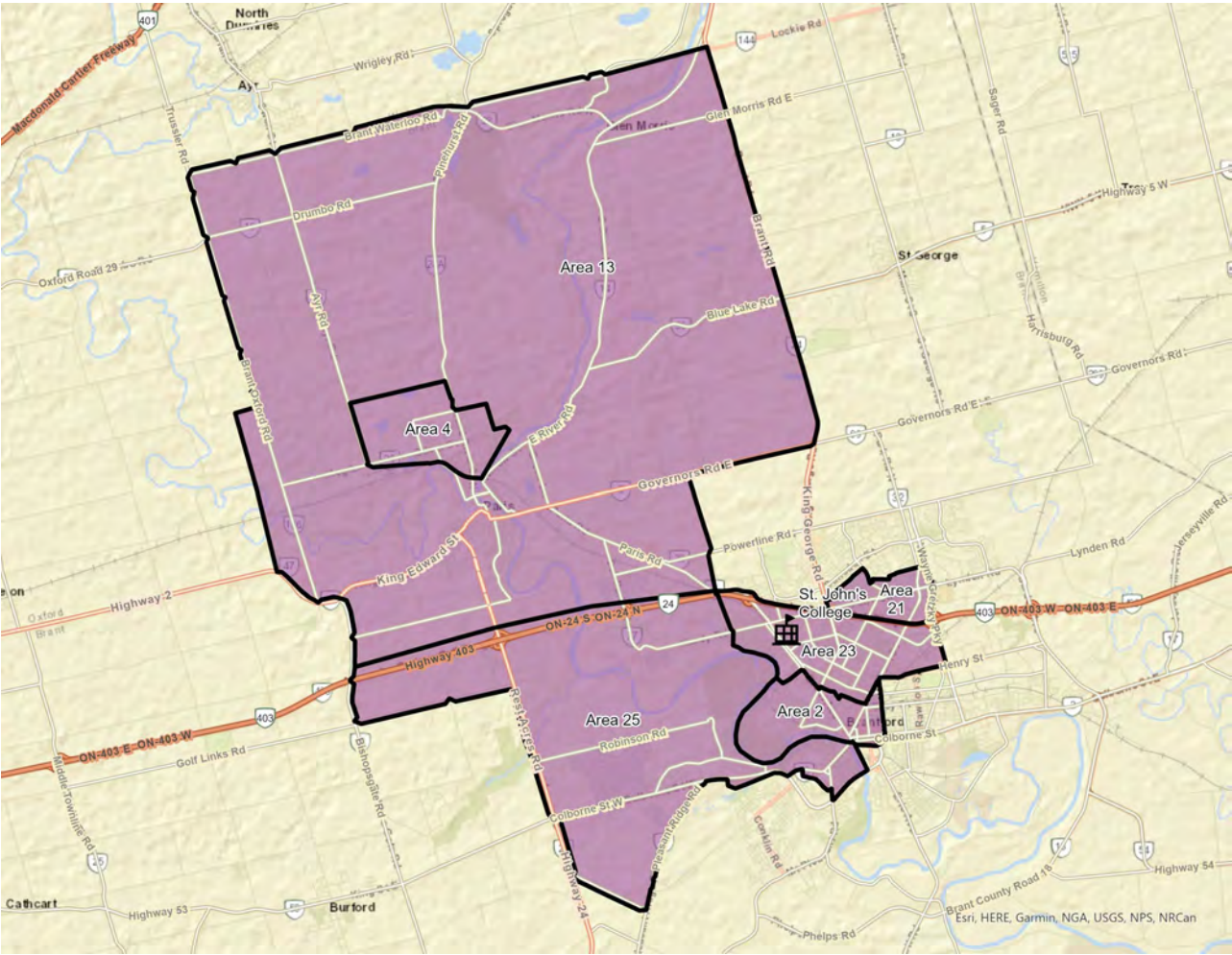
Adjusted Idea 2 – Assumption College



Area 3 – Holy Cross and Area 5 – Madonna Della Libera
apart of boundary

School	Study Areas That Make Up Boundary
Assumption College School	<ul style="list-style-type: none">Area 1 – Blessed SacramentArea 3 – Holy CrossArea 5 – Madonna Della LiberaArea 16 – St. GabrielArea 26 – St. Basil

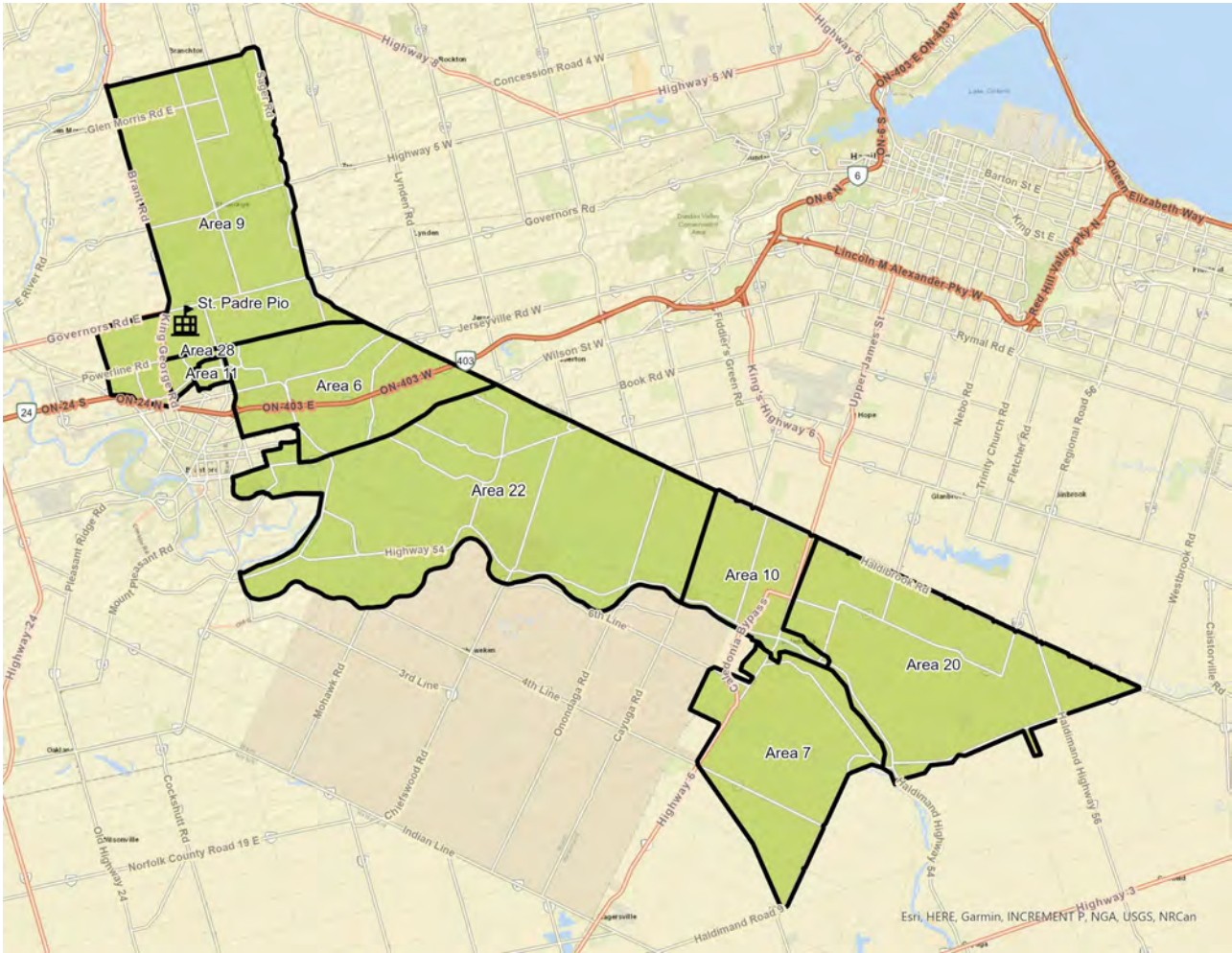
Adjusted Idea 2 – St. John’s College



Adjustment(s) Made:
Area 3 – Holy Cross and Area 5 – Madonna Della Libera
not apart of boundary
Area 21 – St. Patrick’s (Brantford) apart of boundary

School	Study Areas That Make Up Boundary
St. John's College School	<ul style="list-style-type: none">Area 2 – Christ the KingArea 4 – Holy FamilyArea 13 – Sacred Heart (Paris)Area 21 – St. Patrick (Brantford)Area 23 – St. PiusArea 25 – St. Theresa

Adjusted Idea 2 – New St. Padre Pio



Adjustment(s) Made:
Area 21 – St. Patrick’s (Brantford) not apart of boundary

School	Study Areas That Make Up Boundary
New St. Padre Pio Catholic Secondary School	<ul style="list-style-type: none">• Area 6 – Notre Dame (Brantford)• Area 7 – Notre Dame (Caledonia)• Area 9 – Our Lady of Providence• Area 10 – Pope Francis• Area 11 – Resurrection• Area 20 – St. Patrick (Caledonia)• Area 22 – St. Peter• Area 28 – St. Leo

Scenario Table

Overview By School	OTG	Portables	Existing Enrolment	Adjusted Idea 1a	Idea 1b	Adjusted Idea 1b	Idea 2	Adjusted Idea 2
Assumption College School	1,130	21	2,043	1,530	1,246	1,324	1,258	1,520
St. John's College	1,403	9	1,621	908	1,105	1,114	1,188	1,013
Holy Trinity CHS	1,193	-	1,021	1,021	1,021	1,021	1,021	1,021
New St. Padre Pio CSS	1,377	-	-	1,127	1,214	1,127	1,119	1,032
Total	5,103	30	4,685 92%	4,586 90%	4,586 90%	4,586 90%	4,586 90%	4,586 90%

