



Brant County Attendance Boundary Review

Brant Haldimand Norfolk Catholic District School Board
October 18th, 2023

Attendance Area Change Drivers



**Enrolment
Imbalance**

New Schools

**Enrolment
Pressures**

Program

Brant County Attendance Boundary Review: Why a Review?



FOCUS: SCHOOL UTILIZATIONS & SCHOOL BOUNDARIES

- Schools in Brant County, especially in Paris, are operating with high utilizations and in many instances, enrolment is well above the permanent capacity of the school;
- Sacred Heart CES (Paris) and Holy Family CES are both operating at ~ 133% utilization of permanent capacity and require several portables to accommodate enrolment. Blessed Sacrament CES is also operating above capacity as well. Enrolments at all three schools are projected to continue to increase.
- 4 schools have been identified for this review – Sacred Heart CES (Paris), Holy Family CES, Blessed Sacrament CES, and St. Theresa CES.

Possible Outcomes, Limitations and Considerations



Outcomes of the Attendance Area Review:

Implement boundary adjustments to balance and improve school utilizations to make the best use of school board resources (spaces) and improve overall student outcomes by:

- Utilizing excess capacity in one facility to alleviate over capacity in another to better meet program needs for all students
- Creating opportunities to better serve all students
- Reduce the need for portable classrooms

Limitations & Considerations:

School size, school location relative to existing and future students, travel time, walking distances, transportation, property size, Ministry of Education benchmarks and policies, and BHNCDSD policies and procedures.

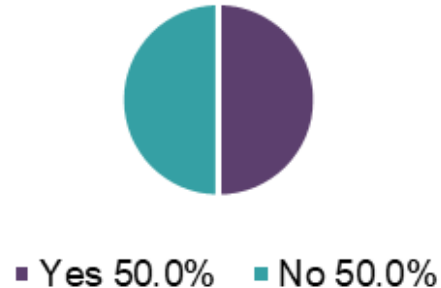
Consideration should also be given to staffing requirements and space, parking etc.

Transitional provisions and legacy agreements and associated impacts, should also be considered as part of any final scenarios and recommendations.

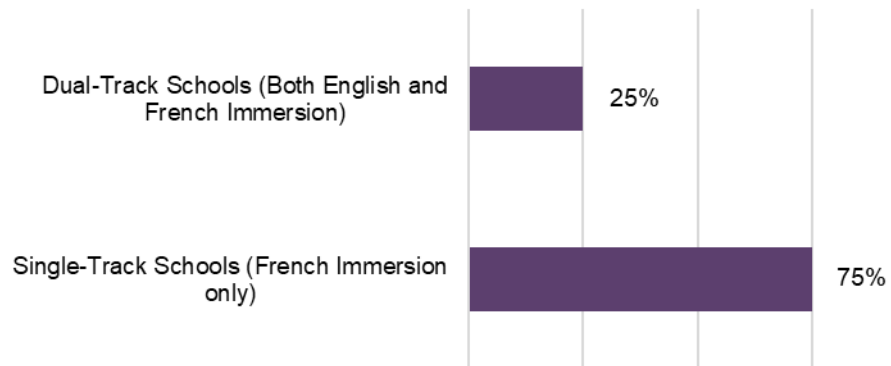
Committee Survey



Do you like the concept of
Grade 7-12 Schools?



Do you think that French Immersion programming should be offered in Single-Track Schools (French Immersion only) or Dual-Track Schools (both English and French Immersion)?



Repeated themes across survey answers:

- Belief that parents will not move student(s) from current school for FI program, but might for 7/8
- 50% voted in favour of options the containing 7-12 model
- Belief that 7-12 model provides a variety of educational opportunities to 7/8 students, but also not sure how 7/8s would be accommodated in a secondary school
- All participants believe the Board should consider holding zones
- All participants believe that the maximum length of time a child should be bussed for specialized programs is an hour or less
- Desire to maintain school communities as best as possible and provide the best learning environment to students

Existing School Attendance Areas
Brant County (Less the City of Brantford)

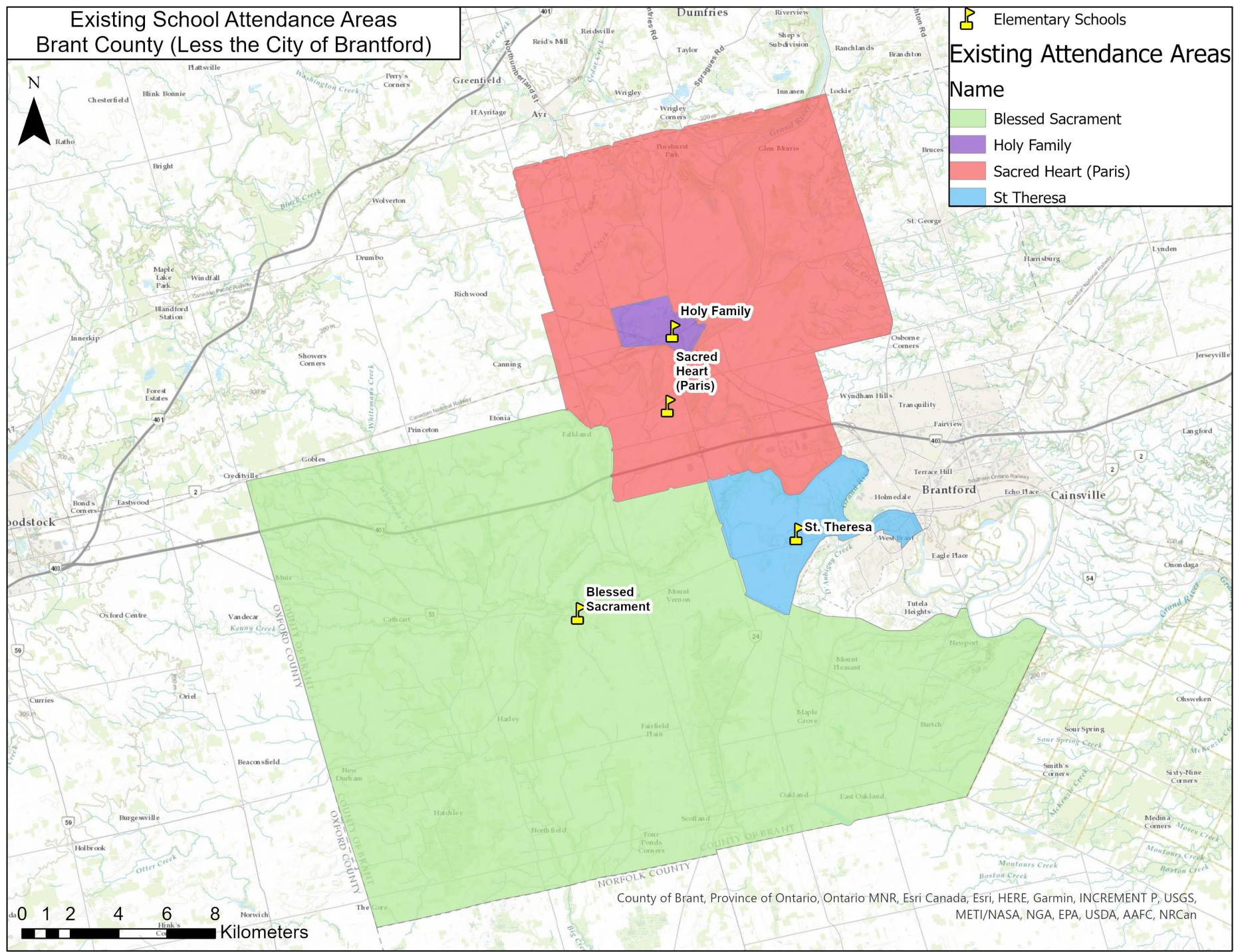
Existing Attendance Areas

Name

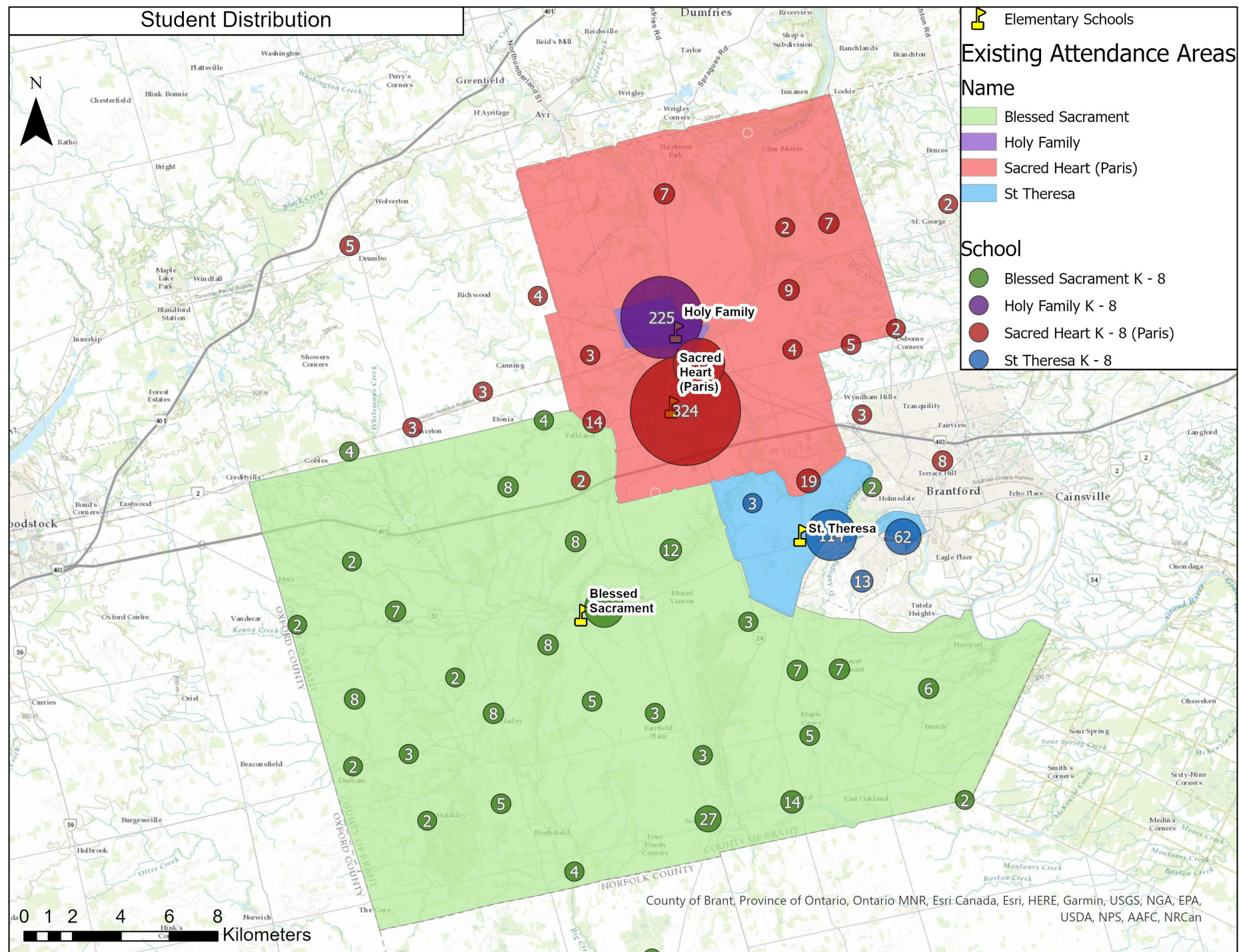
- Blessed Sacrament
- Holy Family
- Sacred Heart (Paris)
- St Theresa



Map of Existing Attendance Boundaries



Student Distribution



Current Situation

Historical and Projected Enrolments and Utilizations



School Name	On-The-Ground Capacity	Historical				Current	Projected	
		2011/ 2012	2016/ 2017	2020/ 2021	2021/ 2022	2022/ 2023	2027/ 2028	2032/ 2033
Blessed Sacrament	236	142	183	227	230	257	297	276
Holy Family	164	152	138	198	202	218	295	382
Sacred Heart (Paris)	420	203	276	405	477	558	830	1,026
St. Theresa	210	152	173	167	176	189	185	172
Total	1,030	649	770	997	1,085	1,222	1,606	1,855

School Name	On-The-Ground Capacity	Historical				Current	Projected	
		2011/ 2012	2016/ 2017	2020/ 2021	2021/ 2022	2022/ 2023	2027/ 2028	2032/ 2033
Blessed Sacrament	236	60%	78%	96%	97%	109%	126%	117%
Holy Family	164	93%	84%	121%	123%	133%	180%	233%
Sacred Heart (Paris)	420	48%	66%	96%	114%	133%	198%	244%
St. Theresa	210	72%	82%	80%	84%	90%	88%	82%
Total	1,030	63%	75%	97%	105%	119%	156%	180%

Current Situation

Enrolment and Utilization by Program: October 31, 2022, Enrolments



School	OTG	Total RT	Total FI	Total Enrolment	Utilization with FI	Utilization without FI
Blessed Sacrament	236	257	0	257	109%	109%
Holy Family	164	218	0	218	133%	133%
Sacred Heart (Paris)	420	377	181	558	133%	90%
St. Theresa	210	189	0	189	90%	90%
Total	1,030	1,041	181	1,222	119%	101%

Current Situation

Border Crossing



Attending School	Border-Crossing “In” # of students from other school area, attending this school	Border-Crossing “Out” # of students from this school area, attending elsewhere	Border-Crossing “Net”
Blessed Sacrament K - 8	16	9	7
Holy Family K - 8	10	6	4
Sacred Heart K - 8 (Paris)	32	9	23
St Theresa K - 8	19	3	16
Total	77	27	50

Note: Border-Crossing based on Regular Track Boundaries and students.

- 9 Sacred Heart CS students reside in the Blessed Sacrament boundary, 6 reside in the Holy Family boundary, 5 in the St. Leo boundary, 4 in the Our Lady of Providence boundary, 5 reside out of district, 1 in St. Patrick (Brantford), 1 in St. Pius, and 1 in Resurrection
- 13 St. Theresa’s CS students reside in the St. Basil boundary

Ideas for Consideration: French Immersion



Can the French Immersion program be relocated from Sacred Heart (Paris) CES?

Current Conditions					
School	OTG	2022 Enrolment	Utilization	Surplus Spaces	# of Portables (2022)
Blessed Sacrament	236	257	109%	-21	0
Holy Family	164	218	133%	-54	3
Sacred Heart (Paris)	420	558	133%	-138	12
St. Leo	288	359	125%	-71	6
St. Theresa	210	189	90%	21	1
Total	1,318	1,581	120%	-263	22

- Moving the French Immersion program out of Sacred Heart CES would significantly improve the school's utilization – from 133% to 90%.
- However, moving all of the French Immersion students to another existing Dual-Track French Immersion school (St. Leo CES or Madonna Della Libera), poses considerable issues because of either capacity issues at the existing FI schools or distance that would have to be travelled (average of 9KM to St. Leo and 12KM to Madonna Della Libera).

Proposed Conditions					
School	OTG	2022 Enrolment	Utilization	Surplus Spaces	# of Portables (2022)
Blessed Sacrament	236	257	109%	-21	0
Holy Family	164	218	133%	-54	3
Sacred Heart (Paris)	420	377	90%	43	0
St. Leo	288	540	188%	-252	11
St. Theresa	210	189	90%	21	1
Total	1,318	1,581	120%	-263	15

Proposed Conditions					
School	OTG	2022 Enrolment	Utilization	Surplus Spaces	# of Portables (2022)
Blessed Sacrament	236	257	109%	-21	0
Holy Family	164	218	133%	-54	3
Madonna Della Libera	466	528	113%	-62	3
Sacred Heart (Paris)	420	377	90%	43	0
St. Theresa	210	189	90%	21	1
Total	1,260	1,569	125%	-309	7

Ideas for Consideration: Grade Configuration Change



Move all the grade 7/8 students out of Sacred Heart (Paris) CES and Holy Family CES to one of the Brantford secondary schools.

Current Conditions					
School	OTG	2022 Enrolment	Utilization	Surplus Spaces	# of Portables (2022)
Blessed Sacrament	236	257	109%	-21	0
Holy Family	164	218	133%	-54	3
Sacred Heart (Paris)	420	558	133%	-138	12
St. Theresa	210	189	90%	21	1
Total	1,030	1,222	119%	-192	16
Assumption College	1,128	1,685	149%	-557	20

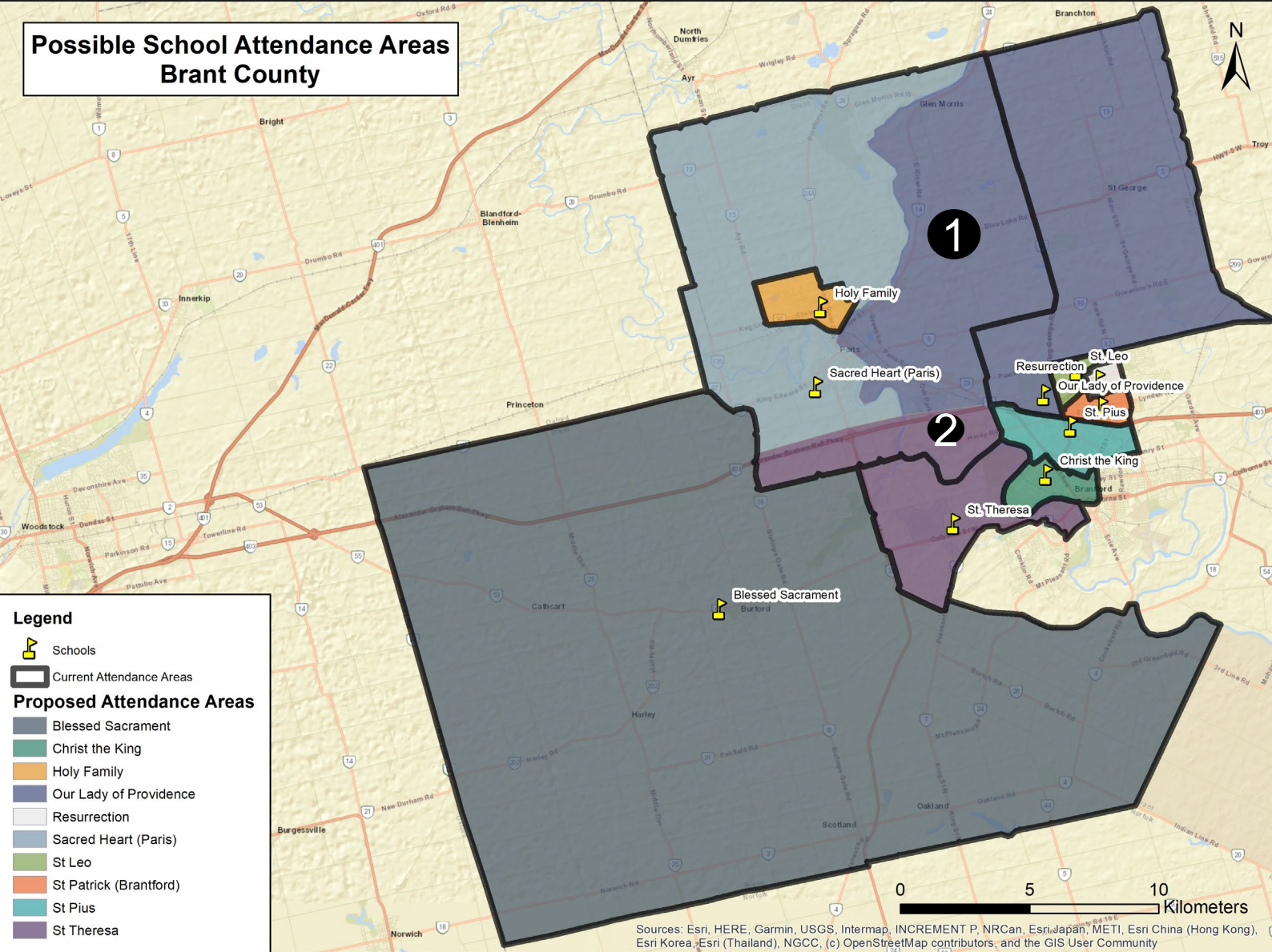
- Moving Grade 7s and 8s out of Sacred Heart CES and Holy Family CES would significantly improve the schools' utilizations.
- Moving all the Grade 7 and 8 students to Assumption College would only further contribute to the enrolment pressures the school is currently facing and change the existing feeder school alignments (i.e. Holy Family and Sacred Heart currently feed into St. John's College for secondary).
- However, moving all the Grade 7 and 8 students to St. John's College is viable from a space perspective and maintains the current feeder school alignments.

Proposed Conditions					
School	OTG	2022 Enrolment	Utilization	Surplus Spaces	# of Portables (2022)
Blessed Sacrament	236	257	109%	-21	0
Holy Family	164	176	107%	-12	1
Sacred Heart (Paris)	420	485	115%	-65	3
St. Theresa	210	189	90%	21	1
Total	1,030	1,107	107%	-77	4
Assumption College	1,128	1,800	160%	-672	29

Proposed Conditions					
School	OTG	2022 Enrolment	Utilization	Surplus Spaces	# of Portables (2022)
Blessed Sacrament	236	257	109%	-21	0
Holy Family	164	176	107%	-12	1
Sacred Heart (Paris)	420	485	115%	-65	3
St. Theresa	210	189	90%	21	1
Total	1,030	1,107	107%	-77	5
St. John's College	1,399	1,320	94%	79	9

Ideas for Consideration: Boundary Changes

Option 1 (Committee Option 1A)



- 1 Extend Our Lady of Providence's catchment into Sacred Heart's;
- 2 Extend St. Theresa's catchment into Sacred Heart's.

Current Conditions					
School	OTG	2022 Enrolment	Utilization	Surplus Spaces	# of Portables (2022)
Blessed Sacrament	236	257	109%	-21	0
Holy Family	164	218	133%	-54	3
Our Lady of Providence	340	278	82%	62	0
Sacred Heart (Paris)	420	558	133%	-138	12
St. Theresa	210	189	90%	21	1
Total	1,370	1,500	109%	-130	16

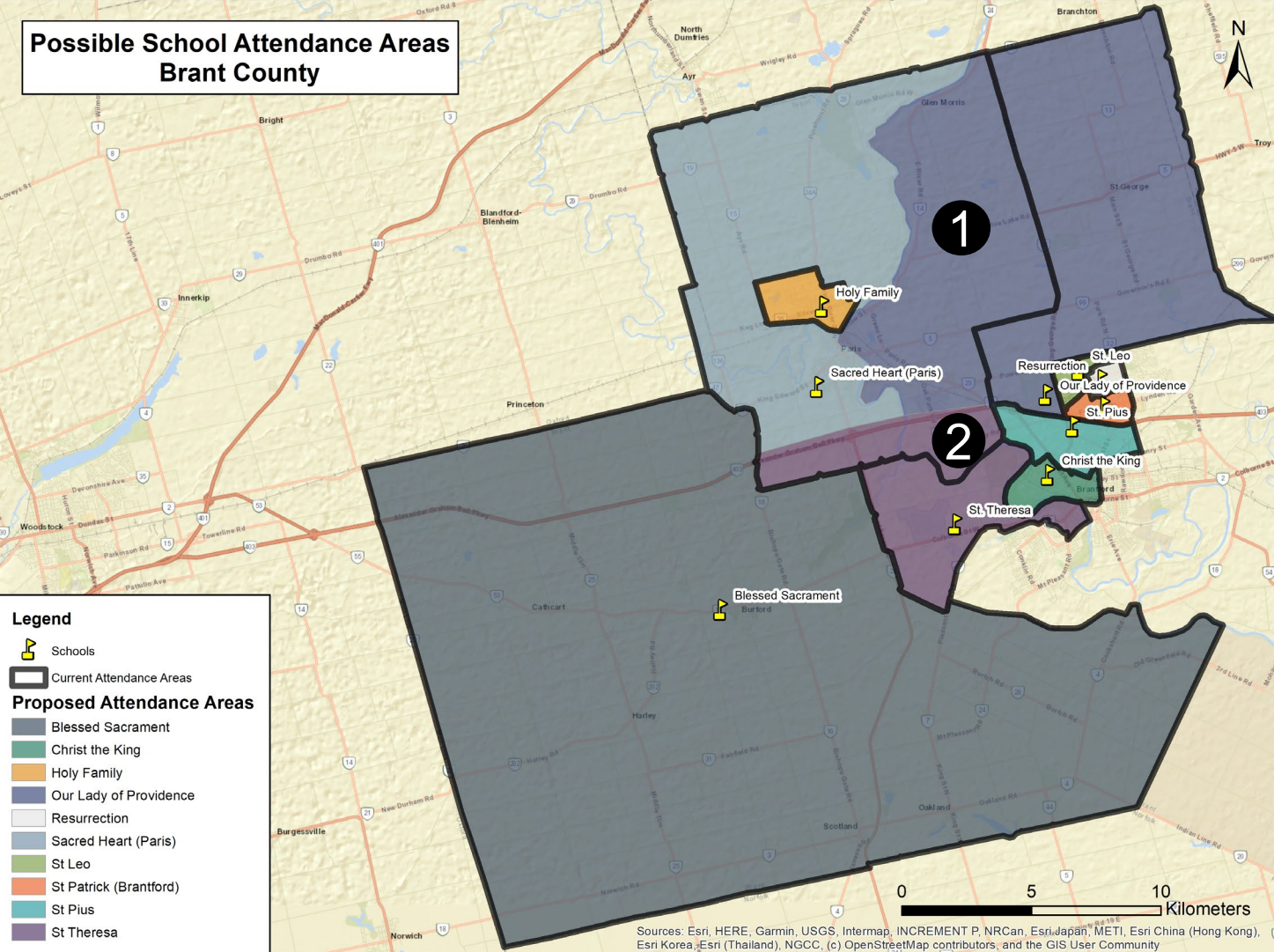
Proposed Conditions					
School	OTG	2022 Enrolment	Utilization	Surplus Spaces	# of Portables (2022)
Blessed Sacrament	236	257	109%	-21	0
Holy Family	164	218	133%	-54	3
Our Lady of Providence	340	312	92%	28	0
Sacred Heart (Paris)	420	506	120%	-86	4
St. Theresa	210	207	99%	3	1
Total	1,370	1,500	109%	-130	8

Ideas for Consideration: Boundary + Grade Changes

Option 2 (Committee Option 2)



- 1 Extend Our Lady of Providence's catchment into Sacred Heart's;
- 2 Extend St. Theresa's catchment into Sacred Heart's.
- 3 Send 7/8s from Sacred Heart and Holy Family to St. John's College.



Current Conditions					
School	OTG	2022 Enrolment	Utilization	Surplus Spaces	# of Portables (2022)
Blessed Sacrament	236	257	109%	-21	0
Holy Family	164	218	133%	-54	3
Our Lady of Providence	340	278	82%	62	0
Sacred Heart (Paris)	420	558	133%	-138	12
St. Theresa	210	189	90%	21	1
Total	1,370	1,500	109%	-130	16

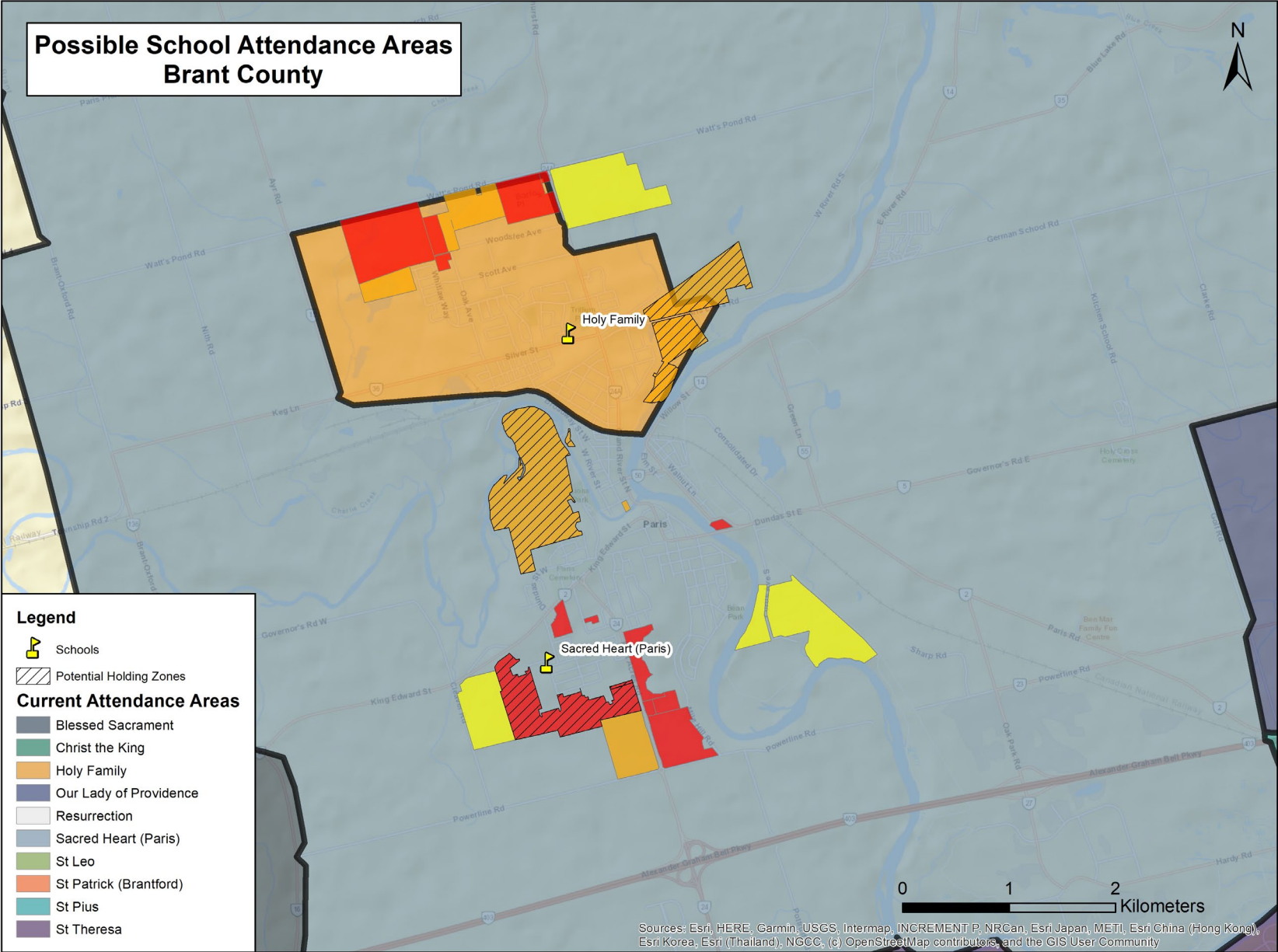
St. John's College	1,399	1,205	86%	194	9
---------------------------	--------------	--------------	------------	------------	----------

Proposed Conditions					
School	OTG	2022 Enrolment	Utilization	Surplus Spaces	# of Portables (2022)
Blessed Sacrament	236	257	109%	-21	0
Holy Family	164	176	107%	-12	1
Our Lady of Providence	340	312	92%	28	0
Sacred Heart (Paris)	420	433	103%	-13	1
St. Theresa	210	207	99%	3	1
Total	1,370	1,385	101%	-15	2

St. John's College	1,399	1,320	94%	79	9
---------------------------	--------------	--------------	------------	-----------	----------

Sources: Esri, HERE, Garmin, USGS, Intermap, INCREMENT P, NRCan, Esri Japan, METI, Esri China (Hong Kong), Esri Korea, Esri (Thailand), NGCC, (c) OpenStreetMap contributors, and the GIS User Community

Holding Zones: Brant County



- 1 Develop holding zones where significant development (greater than 500 total units) is expected, holding students at schools with existing surplus space.

NEXT STEPS



- Community members to provide feedback based on ideas presented.
 - Survey to be distributed
- Community members can submit questions or comments to brantcounty@bhncdsb.ca
- Third Committee meeting and feedback
- Prepare and present recommended option to Trustees for approval on December 19th.

QUESTIONS/COMMENTS?