



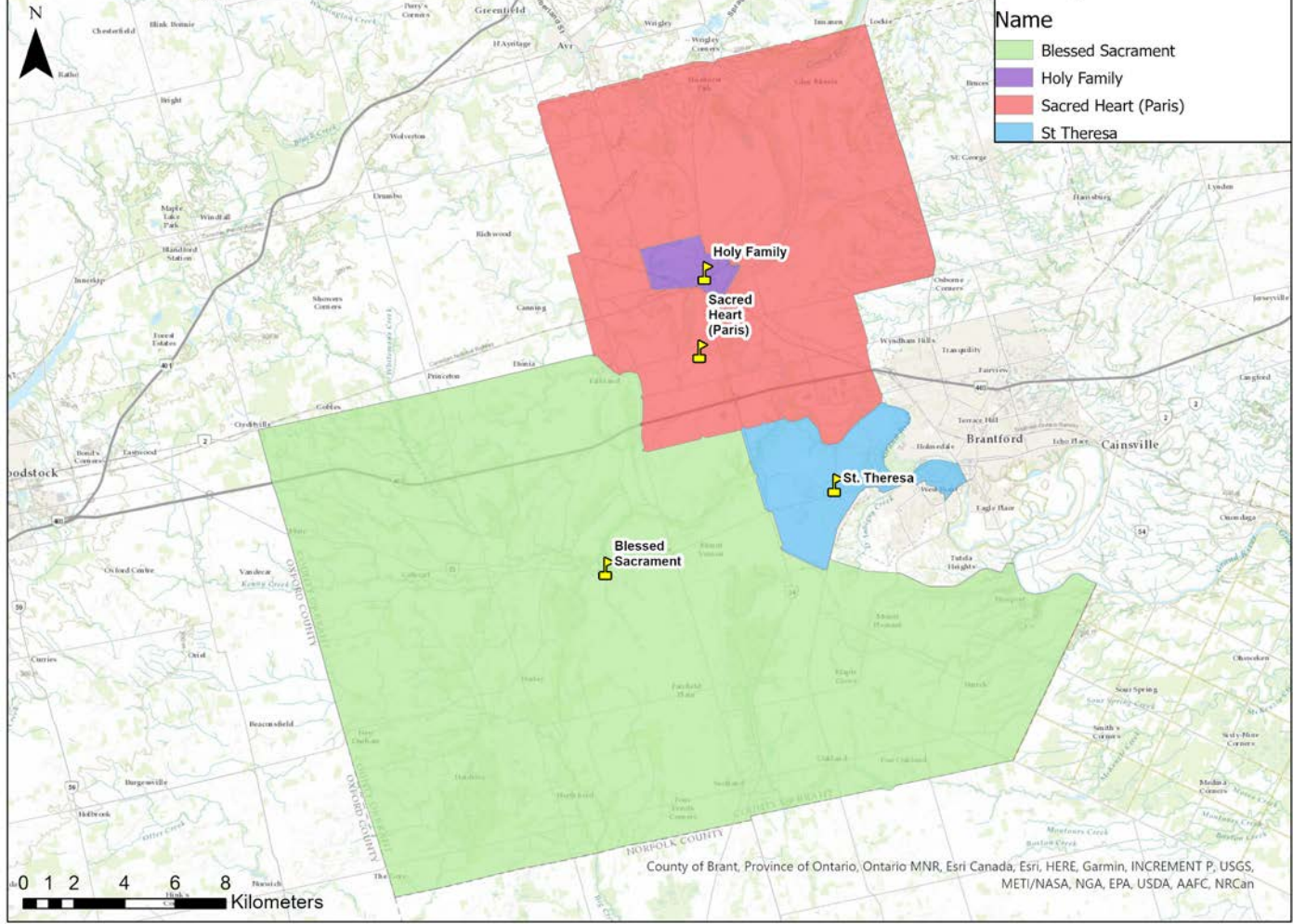
Brant County Attendance Boundary Review: Meeting #4

Brant Haldimand Norfolk Catholic District School Board
November 27th, 2023

Existing School Attendance Areas Brant County (Less the City of Brantford)

Elementary Schools Existing Attendance Areas

- Name
- Blessed Sacrament
 - Holy Family
 - Sacred Heart (Paris)
 - St. Theresa



Map of Existing Attendance Boundaries

County of Brant, Province of Ontario, Ontario MNR, Esri Canada, Esri, HERE, Garmin, INCREMENT P, USGS, METI/NASA, NGA, EPA, USDA, AAFC, NRCan

Current Situation

Historical and Projected Enrolments and Utilizations



School Name	On-The-Ground Capacity	Historical				Current		Projected	
		2011/ 2012	2016/ 2017	2020/ 2021	2021/ 2022	2022/ 2023	2023/ 2024	2027/ 2028	2032/ 2033
Blessed Sacrament	236	142	183	227	230	257	263	297	276
Holy Family	164	152	138	198	202	218	228	295	382
Sacred Heart (Paris)	420	203	276	405	477	558	632	830	1,026
St. Theresa	210	152	173	167	176	189	201	185	172
Total	1,030	649	770	997	1,085	1,222	1,324	1,606	1,855

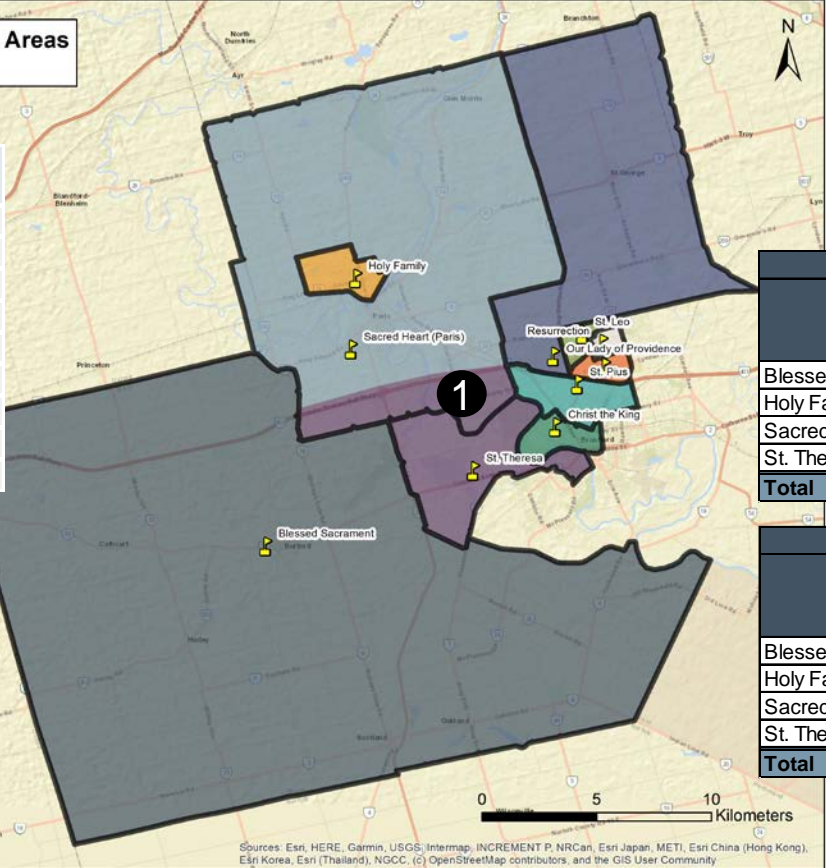
School Name	On-The-Ground Capacity	Historical				Current		Projected	
		2011/ 2012	2016/ 2017	2020/ 2021	2021/ 2022	2022/ 2023	2023/ 2024	2027/ 2028	2032/ 2033
Blessed Sacrament	236	60%	78%	96%	97%	109%	111%	126%	117%
Holy Family	164	93%	84%	121%	123%	133%	139%	180%	233%
Sacred Heart (Paris)	420	48%	66%	96%	114%	133%	150%	198%	244%
St. Theresa	210	72%	82%	80%	84%	90%	96%	88%	82%
Total	1,030	63%	75%	97%	105%	119%	129%	156%	180%

Idea for Consideration: Minor Boundary Change



**Possible School Attendance Areas
Brant County**

Grade	Number of Students
J	3
K	4
1	1
2	4
3	4
4	3
5	3
6	4
Total	26



Legend

Proposed Attendance Areas

- Blessed Sacrament
- Christ the King
- Holy Family
- Our Lady of Providence
- Resurrection
- Sacred Heart (Paris)
- St. Leo
- St. Patrick (Brantford)
- St. Pius
- St. Theresa

1 Extend St. Theresa's catchment into Sacred Heart's, moving approximately 26 students currently in Grades JK-6 from Sacred Heart to St. Theresa. This assumes legacy provisions for students currently in Grade 7 at Sacred Heart.

Current Conditions					
School	OTG	2023 Enrolment	Utilization	Surplus Spaces	# of Portables (2023)
Blessed Sacrament	236	263	111%	-27	0
Holy Family	164	228	139%	-64	3
Sacred Heart (Paris)	420	632	150%	-212	12
St. Theresa	210	201	96%	9	1
Total	1,030	1,324	129%	-294	16

Proposed Conditions					
School	OTG	2023 Enrolment	Utilization	Surplus Spaces	# of Portables (2023)
Blessed Sacrament	236	263	111%	-27	0
Holy Family	164	228	139%	-64	3
Sacred Heart (Paris)	420	606	144%	-186	11
St. Theresa	210	227	108%	-17	1
Total	1,030	1,324	129%	-294	15

Sources: Esri, HERE, Garmin, USGS, Intermap, INCREMENT P, NRCan, Esri Japan, METI, Esri China (Hong Kong), Esri Korea, Esri (Thailand), NGCC, (c) OpenStreetMap contributors, and the GIS User Community

Holding Zones



A total of 3,545 total units are expected to be built from the developments. From these 3,545 total units, approximately 356 students (**93 at Holy Family and 263 at Sacred Heart**) are estimated to come out of these developments based on pupil yields for each school.

Application Number	Agent Name	Application Year	Proposal	Application Status	Application Address	Low Density Units	Medium Density Units	High Density Units	Total Units	Estimated Elementary Pupil Yields	School
PS4-14-KD	Watts Pond Development Corporation	2021	Plan of Subdivision	Deemed Complete	836 WATT'S POND ROAD	54	21	0	75	6	Holy Family
PS1-20-MD	GSP Group	2021	Subdivision	Deemed Complete	305 KING EDWARD STREET	248	200	0	448	49	Sacred Heart
ZBA34-22-MV	IBI Group	2022	-	Deemed Complete	184 PINEHURST ROAD	227	504	253	984	108	Sacred Heart
PS1-15-MD	-	2015	-	Draft Approved	N/A	230	64	0	294	24	Holy Family
PS2-10-RA	-	2010	Residential Subdivision	Draft Approved	N/A	280	91	168	539	59	Sacred Heart
CDM2-21-RC	-	2021	-	Draft Approved	2 Willow Street	25	50	0	75	8	Sacred Heart
PS4-13-MD	-	2013	-	Draft Approved	N/A	463	76	239	778	63	Holy Family
PS1-14-MD / ZBA5-14-MD	-	2014	-	OLT	TCA Sharp Road	352	0	0	352	39	Sacred Heart

Maximum Capacity and Portables



School	Number of Classrooms	OTG	Portables (Current)	Portables (Maximum)	Maximum Capacity	2027 Enrolment	Enrolment Above/Below Max Capacity
Blessed Sacrament	11	236	0	0	236	336	Above
Holy Family	8	164	3	3	233	295	Above
Sacred Heart (Paris)	18	420	12	12	696	830	Above
St. Theresa	8	210	1	2	256	185	Below
Total	45	1,030	16	17	1,421	1,560	Above



Implementation Decisions & Discussions

- Enforce boundary crossing (return students to home schools)?
- Legacy Agreements?
- *Transition/Implementation*
 - Communication
 - Program/Childcare/Other?
 - Staffing requirements/needs
 - School Space Audits/Temporary spaces

NEXT STEPS



- Committee members to provide final recommendations for consideration.
- Prepare and present final options to Trustees for approval

QUESTIONS/COMMENTS?