

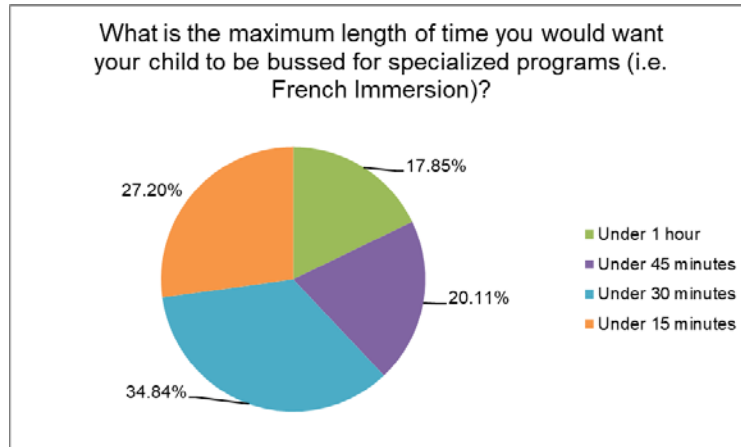
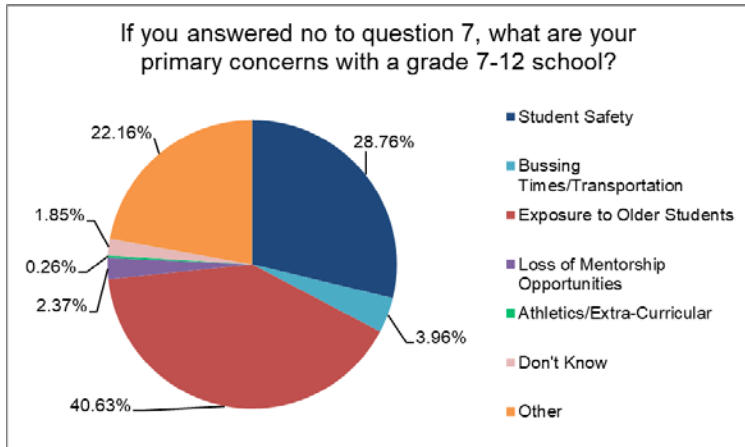
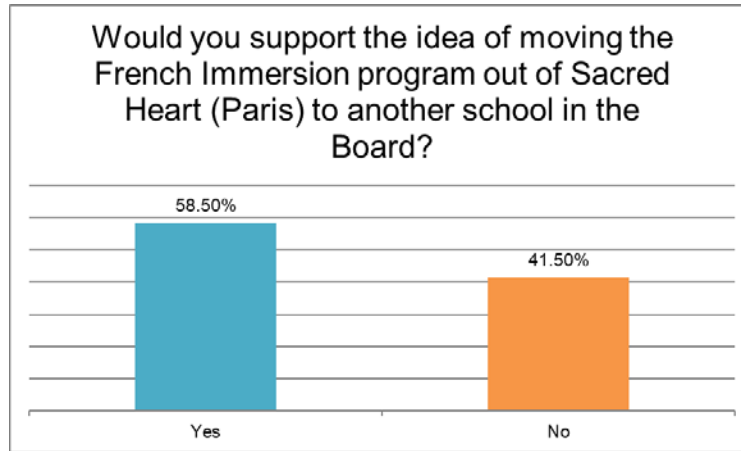
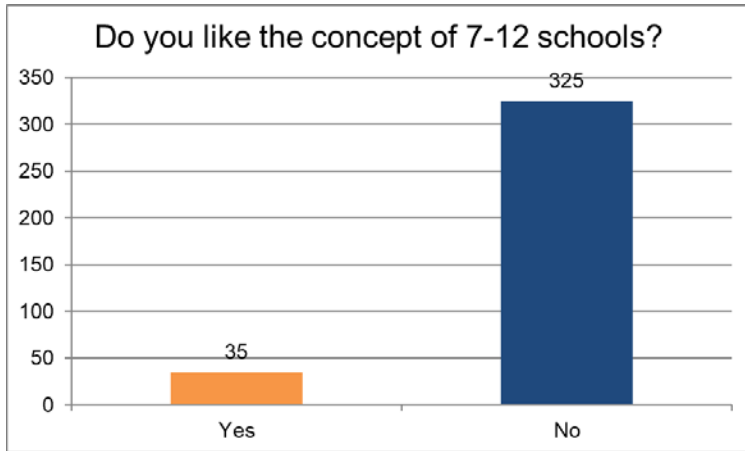


Brant County Attendance Boundary Review: Meeting #3

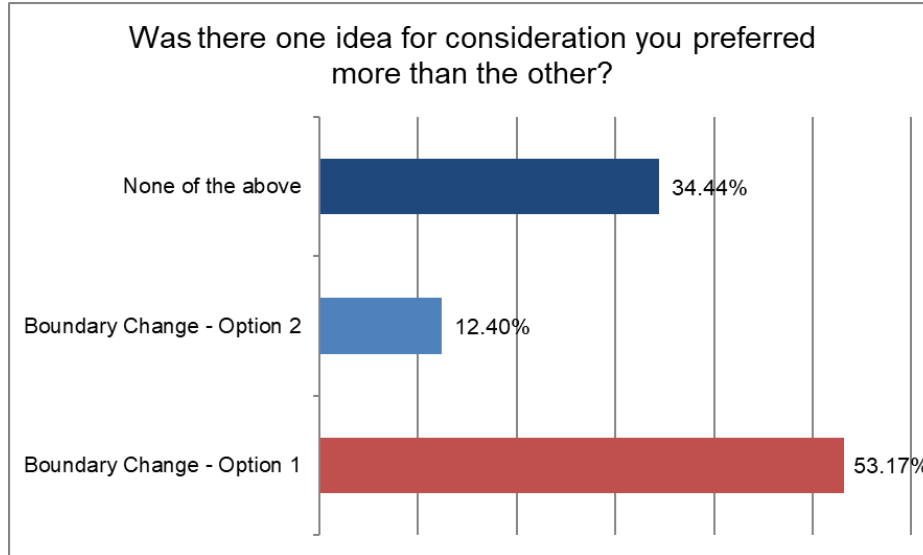
Brant Haldimand Norfolk Catholic District School Board
November 9, 2023



Public Survey Results and Feedback



Public Survey



Why do you prefer Boundary Change – Option 1?

Repeated Themes: Doesn't move Grade 7/8s into a secondary school/Brantford, keeps the FI program at Sacred Heart, keeps communities/neighbourhoods together, interest in holding zones being apart of the solution, alleviates some enrolment pressures at Sacred Heart, least number of students impacted (having to move schools).

Why do you prefer Boundary Change – Option 2?

Repeated Themes: Keeps the FI program at Sacred Heart, significantly reduces enrolment pressures at Sacred Heart/Sacred Heart won't be overcrowded, seems like the fairest option, interest in holding zones being apart of the solution, helps Grade 7/8s prepare for high school better/more opportunities for Grade 7/8s.

Public Survey



What is an alternate idea(s) for consideration?

1. Status Quo/don't move any students
2. Move grade 7/8s to a different elementary school
3. Build a new elementary school in Paris/build a middle school in Paris/build a secondary school in Paris/build an addition(s) at existing school(s)/build a new floor at existing school(s)
4. Move non-Catholic students out of schools first
5. Buy and use the old South Ward school (formerly owned by the public board)
6. Ask which parents are willing to move their children to another school to help balance enrolments
7. Remove daycares to create more classrooms
8. Cap enrolment/admissions and/or move all new students to Brantford schools
9. Add more portables
10. Legacy existing students
11. Don't allow border crossing
12. Consider an incentive program for Grade 7/8s board-wide to attend secondary school for specialized program (IB, French Immersion, etc.)

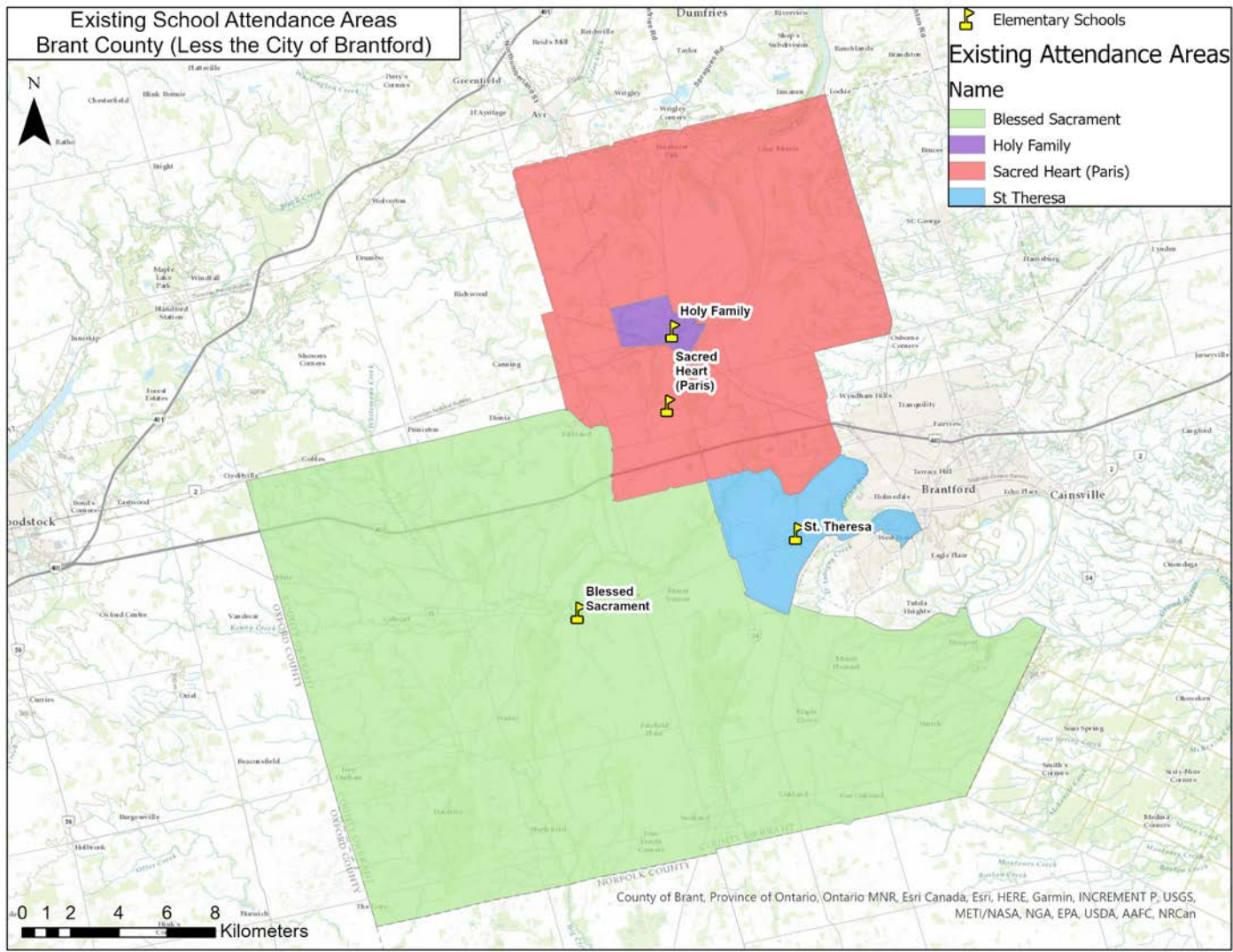
Is there anything else you want Board staff and the consultants to know so that any recommendations truly reflect the interests of the school communities involved?

Repeated Themes: Concern for disrupting students educationally and/or socially, concern for students mental health, concern for Grade 7/8s in secondary schools, concern for future growth, need for a new school in Paris, wish for better communication and earlier public involvement in process, consideration of students with health complications/special needs, inquiry in resources that will be available to help with the transition of any change, vocal that if Grade 7/8s or French Immersion is moved then parents would enroll their children at the public school board, etc.

Existing School Attendance Areas Brant County (Less the City of Brantford)

Existing Attendance Areas

- Name
- Blessed Sacrament
 - Holy Family
 - Sacred Heart (Paris)
 - St. Theresa



Map of Existing Attendance Boundaries

County of Brant, Province of Ontario, Ontario MNR, Esri Canada, Esri, HERE, Garmin, INCREMENT P, USGS, METI/NASA, NGA, EPA, USDA, AAFC, NRCan

Current Situation

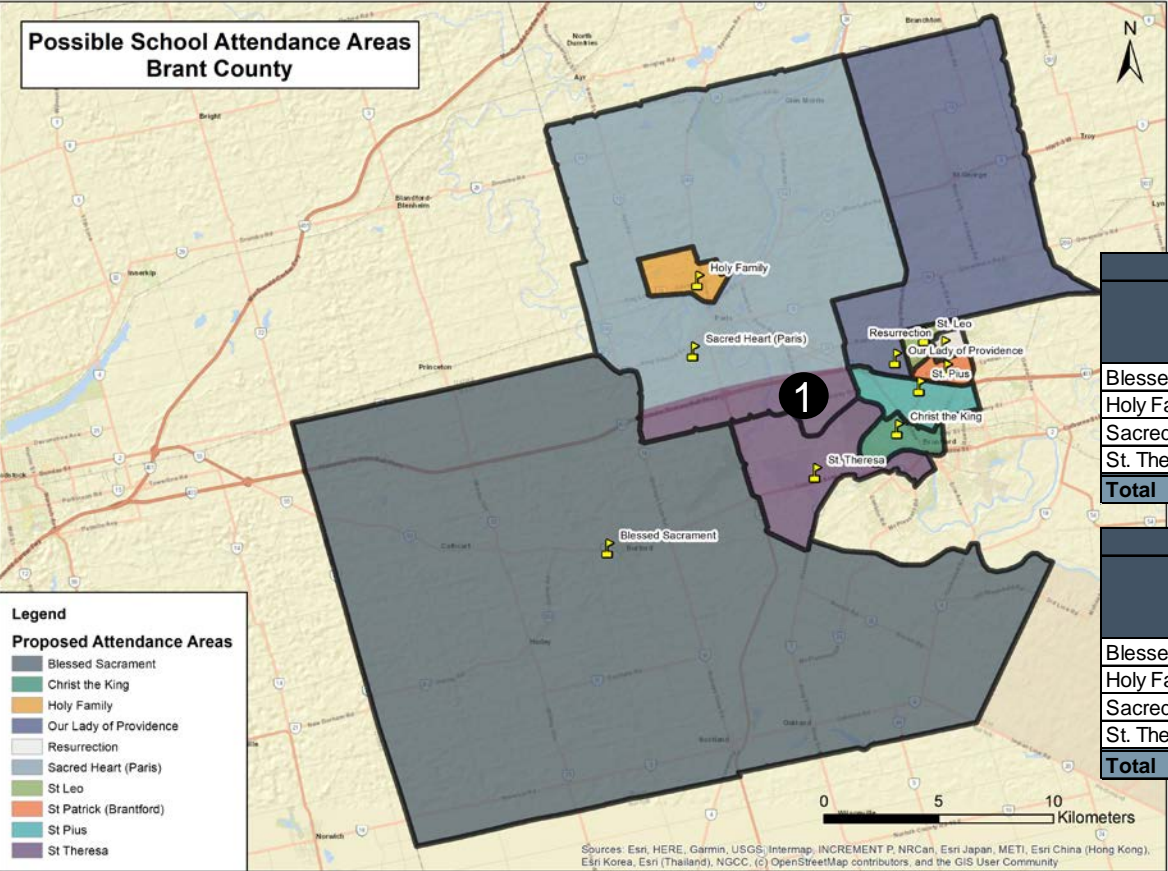
Historical and Projected Enrolments and Utilizations



School Name	On-The-Ground Capacity	Historical				Current		Projected	
		2011/ 2012	2016/ 2017	2020/ 2021	2021/ 2022	2022/ 2023	2023/ 2024	2027/ 2028	2032/ 2033
Blessed Sacrament	236	142	183	227	230	257	263	297	276
Holy Family	164	152	138	198	202	218	228	295	382
Sacred Heart (Paris)	420	203	276	405	477	558	632	830	1,026
St. Theresa	210	152	173	167	176	189	201	185	172
Total	1,030	649	770	997	1,085	1,222	1,324	1,606	1,855

School Name	On-The-Ground Capacity	Historical				Current		Projected	
		2011/ 2012	2016/ 2017	2020/ 2021	2021/ 2022	2022/ 2023	2023/ 2024	2027/ 2028	2032/ 2033
Blessed Sacrament	236	60%	78%	96%	97%	109%	111%	126%	117%
Holy Family	164	93%	84%	121%	123%	133%	139%	180%	233%
Sacred Heart (Paris)	420	48%	66%	96%	114%	133%	150%	198%	244%
St. Theresa	210	72%	82%	80%	84%	90%	96%	88%	82%
Total	1,030	63%	75%	97%	105%	119%	129%	156%	180%

Idea for Consideration: Minor Boundary Change

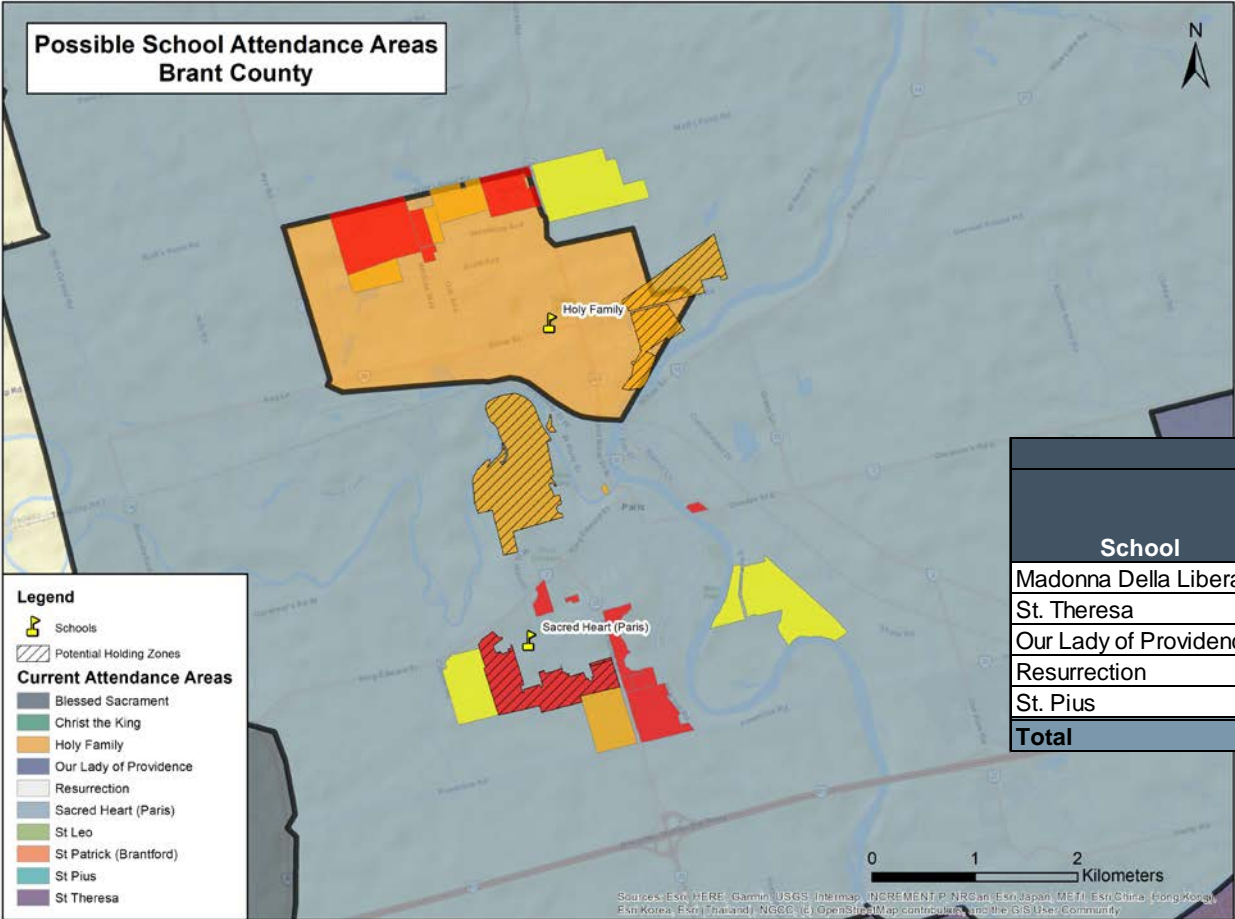


1 Extend St. Theresa's catchment into Sacred Heart's.

Current Conditions					
School	OTG	2023 Enrolment	Utilization	Surplus Spaces	# of Portables (2023)
Blessed Sacrament	236	263	111%	-27	0
Holy Family	164	228	139%	-64	3
Sacred Heart (Paris)	420	632	150%	-212	12
St. Theresa	210	201	96%	9	1
Total	1,030	1,324	129%	-294	16

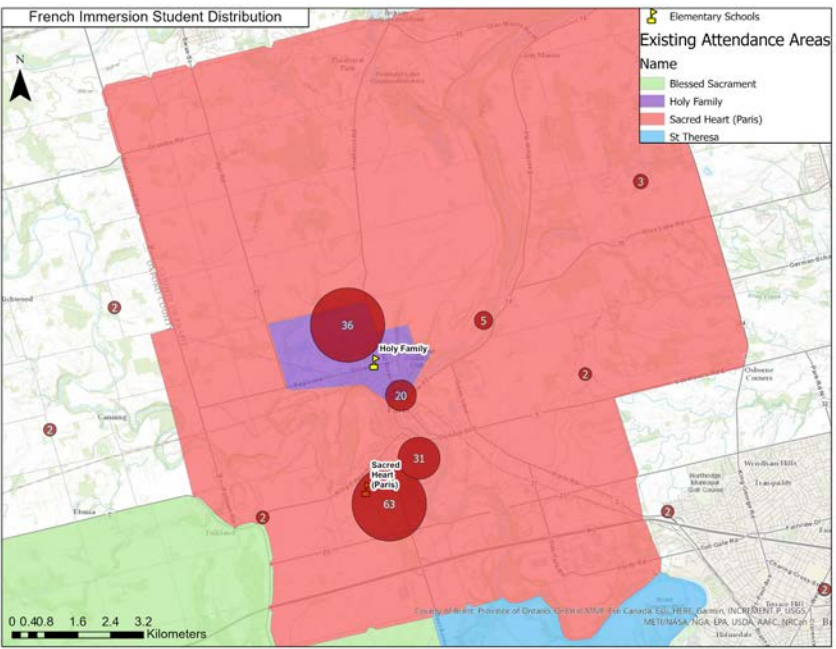
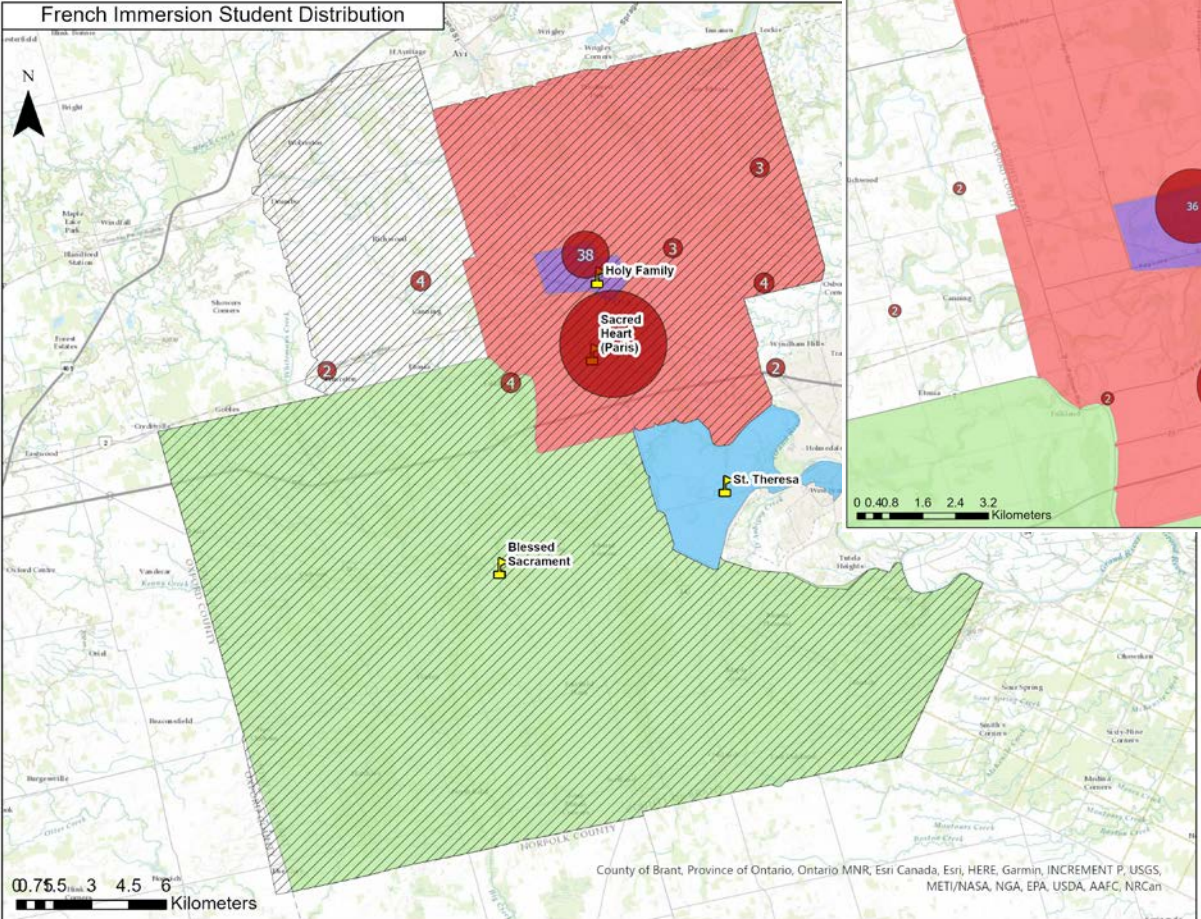
Proposed Conditions					
School	OTG	2023 Enrolment	Utilization	Surplus Spaces	# of Portables (2023)
Blessed Sacrament	236	263	111%	-27	0
Holy Family	164	228	139%	-64	3
Sacred Heart (Paris)	420	604	144%	-184	8
St. Theresa	210	229	109%	-19	1
Total	1,030	1,324	129%	-294	12

Holding Zones



1 Develop holding zones where significant development (greater than 500 total units) is expected, holding students at schools with existing surplus space.

French Immersion Cap



- Only 14 French Immersion students reside outside of the Holy Family CES and Sacred Heart CES Regular-Track attendance areas. Capping the program would result in these students attending the Regular-Track program at Holy Family CES and Sacred Heart CES, ultimately not resolving enrolment pressures at both schools.

Maximum Capacity and Portables



School	Number of Classrooms	OTG	Portables (Current)	Portables (Maximum)	Maximum Capacity
Blessed Sacrament	11	236	0	0	236
Holy Family	8	164	3	3	233
Sacred Heart (Paris)	18	420	12	12	696
St. Theresa	8	210	1	2	256
Total	45	1,030	16	17	1,421

Implementation Decisions & Discussions



- Enforce boundary crossing (return students to home schools)?
- Legacy Agreements?
- *Transition/Implementation*
 - Communication
 - Program/Childcare/Other?
 - Staffing requirements/needs
 - School Space Audits/Temporary spaces

NEXT STEPS



- Committee members to provide final recommendations for consideration.
- Prepare and present final options to Trustees for approval



QUESTIONS/COMMENTS?