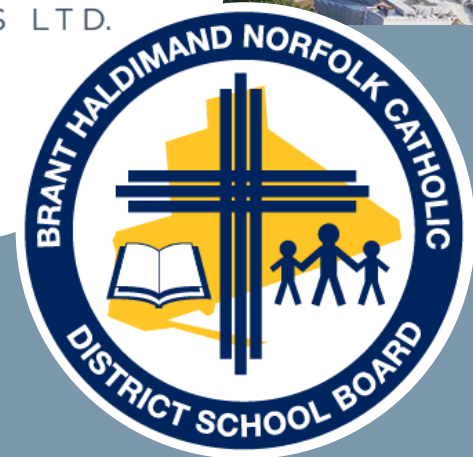




 **Watson
& Associates**
ECONOMISTS LTD.

City of Brantford Attendance Boundary Review: Committee Meeting #2

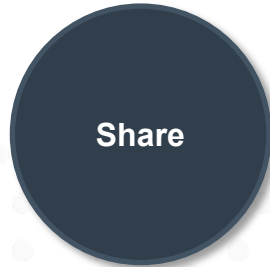
Brant Haldimand Norfolk Catholic District School Board
September 15, 2025



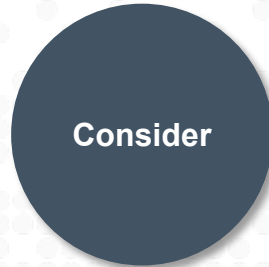


The purpose of Committee Meeting # 2 is to:

- **Share information, data, and ideas** on possible attendance boundary options in advance of engaging the public; and,
- Provide Committee Members the opportunity to **ask questions and offer feedback**.



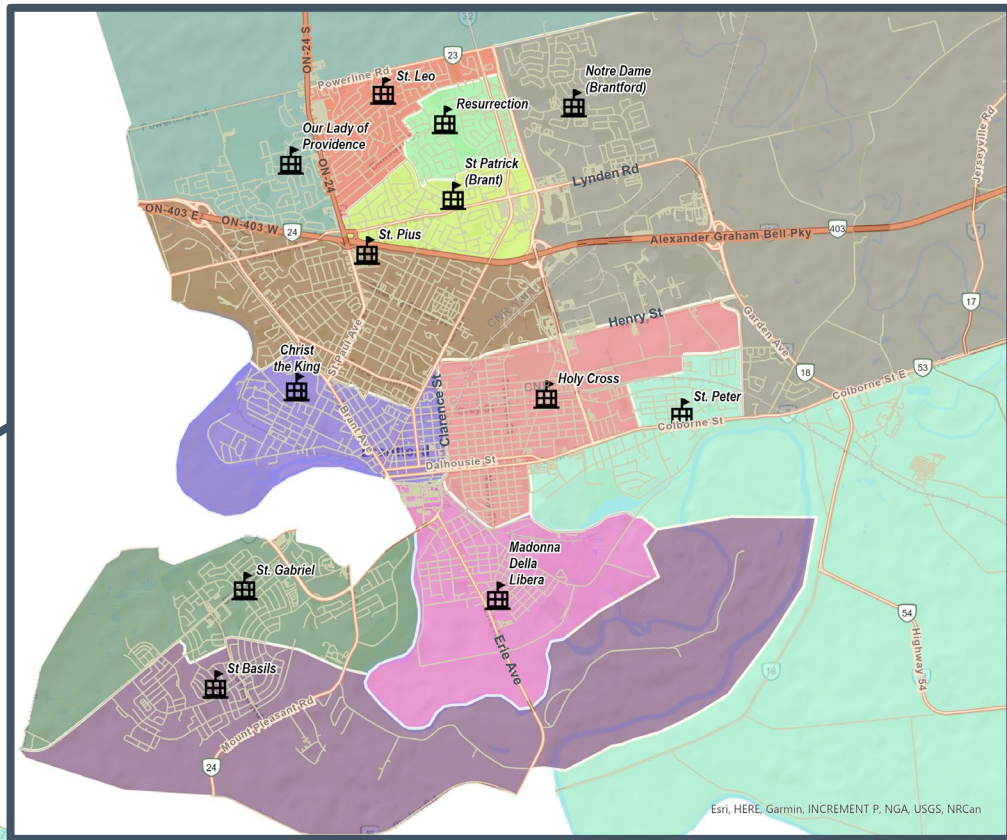
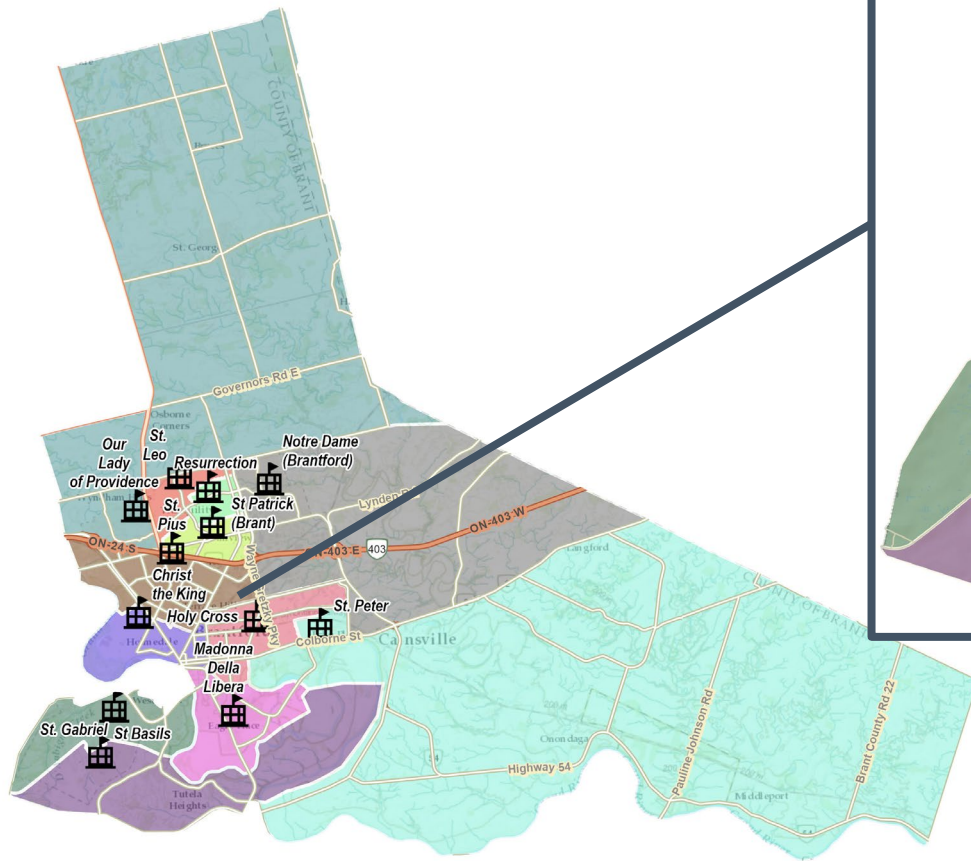
Role of
Administration and
Consultant Team



Role of
Committee Members

Refresher

Existing English Attendance Boundaries



Current Situation

Historical and Projected Enrolments and Facility Utilization by Review Area



School Information					2024				5 Year				10 Year			
School	Programs	OTG	Portables	OTG Incl. Port. OTG	Enrol. (Oct)	Utiliz. %	Utiliz. % w/ Port	Surplus/ Deficit Space	Enrol. (Oct)	Utiliz. %	Utiliz. % w/ Port	Surplus/ Deficit Space	Enrol. (Oct)	Utiliz. %	Utiliz. % w/ Port	Surplus/ Deficit Space
New SW Brantford School	RT	513		513	-	-	-	513	-	-	-	513	-	-	-	513
St. Basil	RT	484	8	668	672	139%	101%	-188	925	191%	138%	-441	1,267	262%	190%	-783
Our Lady of Providence	RT	340		340	291	86%	86%	49	406	119%	119%	-66	529	156%	156%	-189
Holy Cross	RT	236	3	305	304	129%	100%	-68	342	145%	112%	-106	348	147%	114%	-112
St. Gabriel	RT	389	6	527	510	131%	97%	-121	589	151%	112%	-200	724	186%	137%	-335
Christ the King	RT	187	3	256	249	133%	97%	-62	264	141%	103%	-77	283	152%	111%	-96
Madonna Della Libera	DT-FI	466		466	352	76%	76%	114	457	98%	98%	9	577	124%	124%	-111
St. Leo	DT-FI	288	6	426	372	129%	87%	-84	414	144%	97%	-126	482	167%	113%	-194
St. Peter	RT	167	2	213	185	111%	87%	-18	200	120%	94%	-33	217	130%	102%	-50
St. Pius	RT	337		337	297	88%	88%	40	316	94%	94%	21	321	95%	95%	16
St. Patrick (Brantford)	RT	164		164	144	88%	88%	20	127	77%	77%	37	103	63%	63%	61
Resurrection	RT	187		187	135	72%	72%	52	121	65%	65%	66	117	62%	62%	70
Notre Dame (Brantford)	RT	429	2	475	327	76%	69%	102	307	72%	65%	122	323	75%	68%	106
Total		4,187	30	4,877	3,838	92%	79%	349	4,468	107%	92%	-281	5,291	126%	108%	-1,104

Source: Current enrolment derived from official October 31, 2024 headcounts.

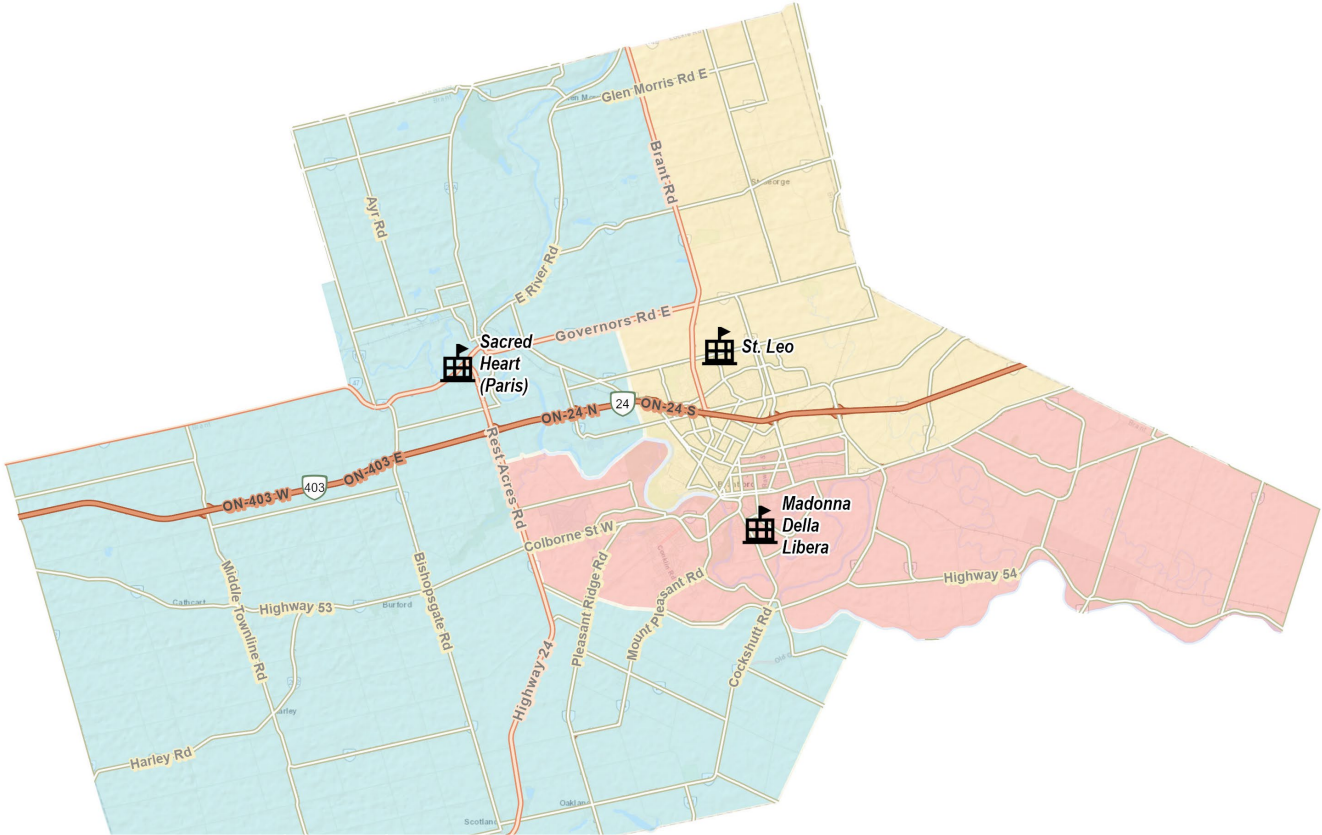
Enrol. = Enrolment
Port = Portables
OTG = On-the-ground capacity
Utiliz. % = Utilization %
Utiliz. % w/ Port. = Utilization with Portables

Current Situation

Snapshot: Enrolment and Facility Utilization by Program

Legend

- Madonna Della Libera FI
- Sacred Heart Paris FI
- St. Leo FI



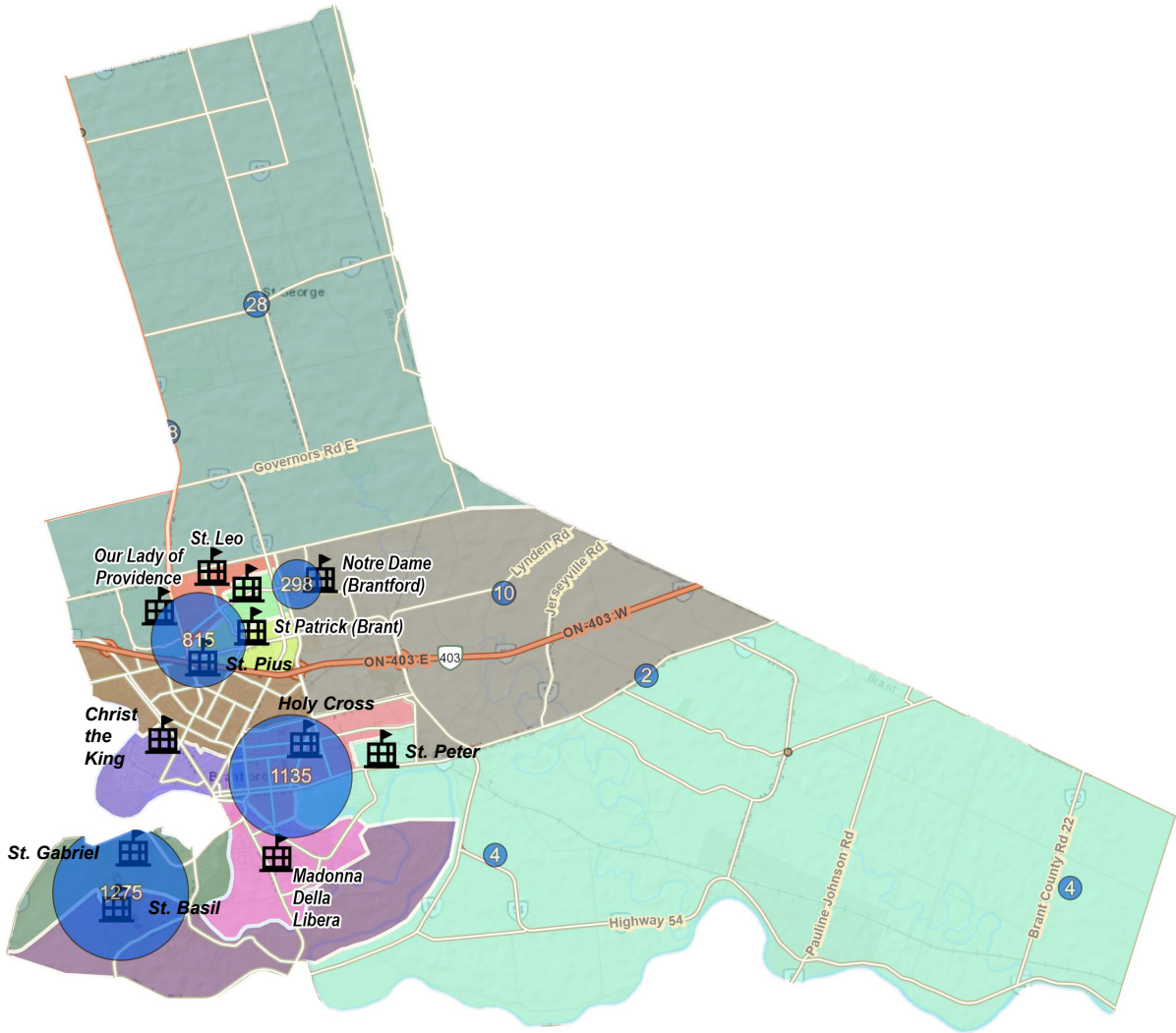
School	On-the-Ground Capacity	Portables	Regular Track	French Immersion	Total Enrolment	Utilization including FI	Utilization excluding FI	Utilization including FI w/Portables	Utilization excluding FI w/Portables
St. Leo	288	6	174	199	373	130%	60%	88%	41%
Madonna Della Libera	466	0	179	172	351	75%	38%	75%	38%
Sacred Heart (Paris)	420	12	460	232	692	165%	110%	99%	66%
Total	1,174	18	813	603	1,416	121%	69%	89%	51%

Source: Derived from October 2024 student plots.

Student Distribution

October 2024 Student Distribution

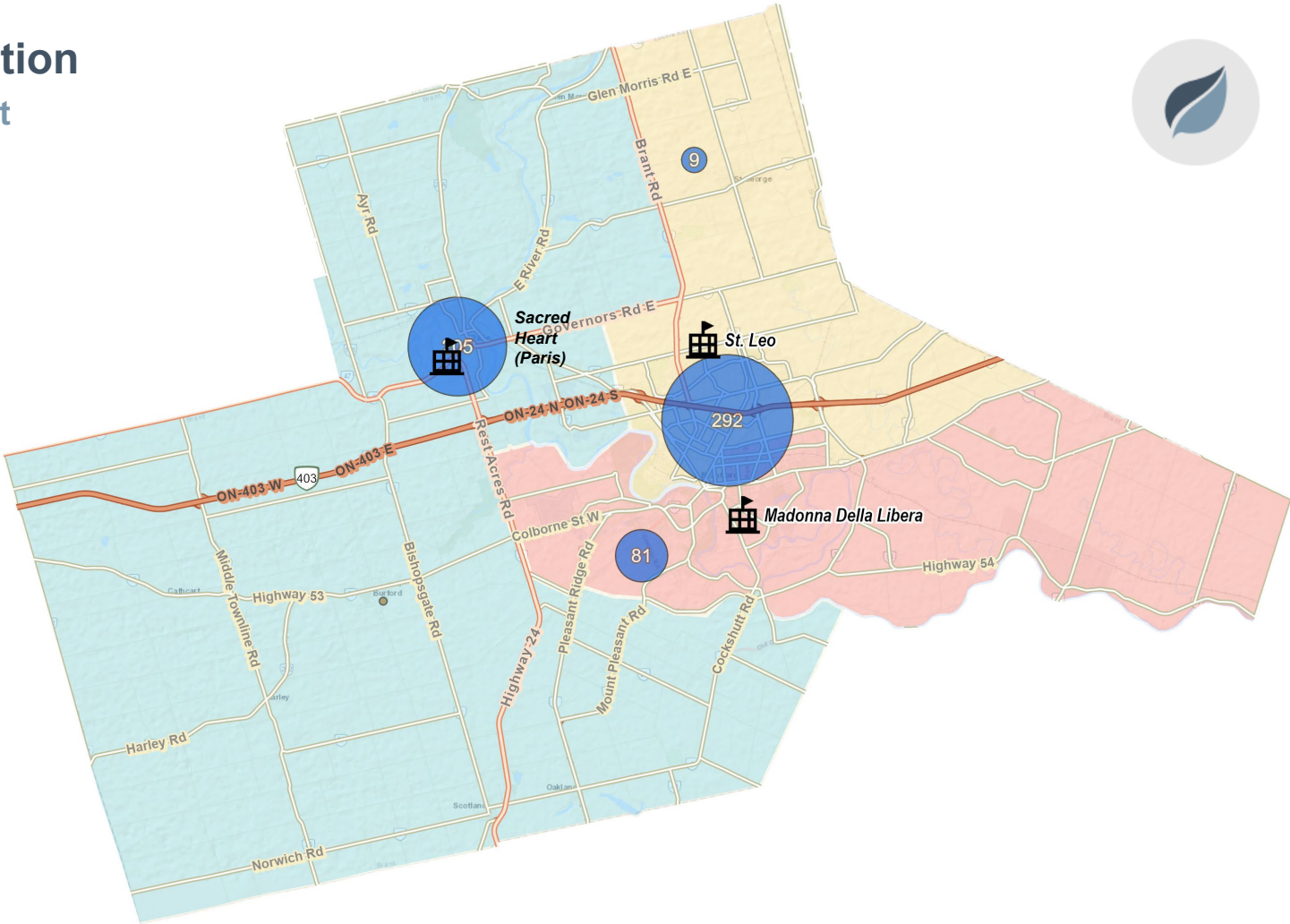
English Track Students



Student Distribution

October 2024 Student Distribution

French Immersion Students



Current Situation

Snapshot: Students Returned to Home Boundary



Attending School	OTG	Current Enrolment	Current Utilization	Current Portables	Students Returned Enrolment	Students Returned Utilization	Portables Needed*
Christ the King	187	244	130%	3	180	96%	0
St. Gabriel	389	504	130%	6	465	120%	4
Our Lady of Providence	340	291	86%	0	266	78%	0
St. Patrick (Brantford)	164	145	88%	0	137	84%	0
Notre Dame (Brantford)	429	328	76%	2	324	76%	0
Resurrection	187	134	72%	0	130	70%	0
Madonna Della Libera	466	351	75%	0	349	75%	0
St. Basil	484	662	137%	8	669	138%	9
St. Leo	288	373	130%	6	381	132%	5
St. Peter	167	185	111%	2	194	116%	2
Holy Cross	236	302	128%	3	324	137%	4
St. Pius	337	301	89%	0	329	98%	0
Total	3,674	3,820	104%	30	3,748	102%	24

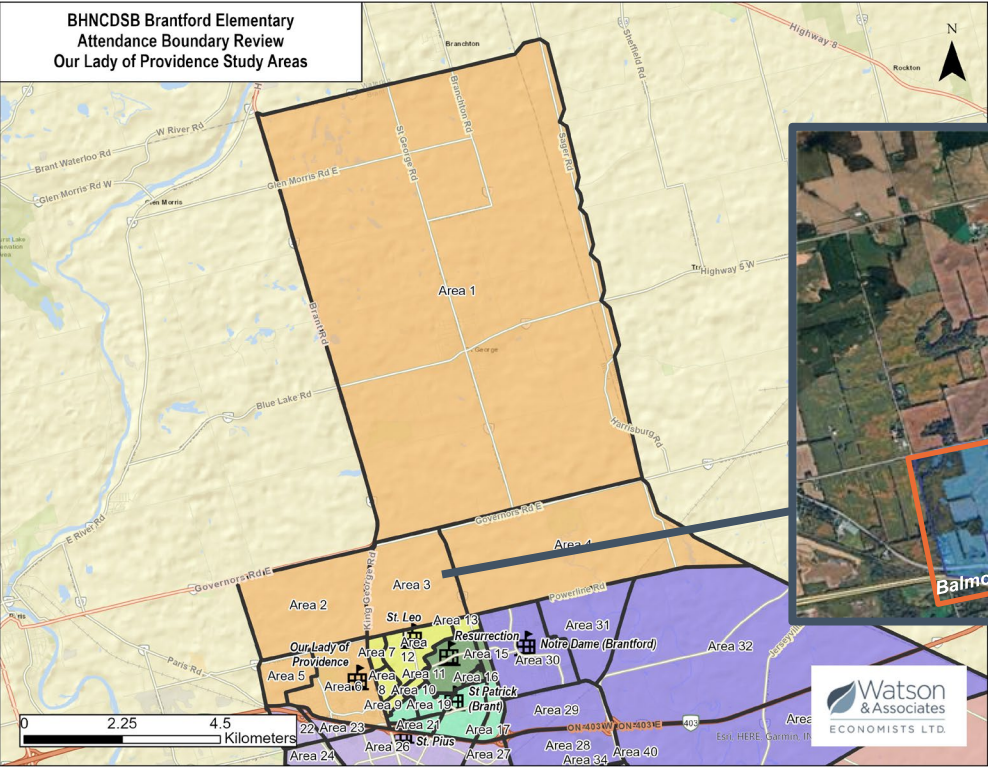
School	In	Out	Net (In minus Out)
Christ the King	70	6	64
St. Gabriel	83	44	39
Our Lady of Providence	40	15	25
St. Patrick (Brantford)	23	15	8
Notre Dame (Brantford)	35	31	4
Resurrection	28	24	4
Madonna Della Libera	34	32	2
St. Basil	62	69	-7
St. Leo	32	40	-8
St. Peter	23	32	-9
Holy Cross	35	57	-22
St. Pius	23	51	-28
Total	488	416	72

Portables Needed calculated by subtracting OTG from existing students and dividing by 23 (1 classroom).

Source: Current enrolment and students returned derived from October 2024 student plots.

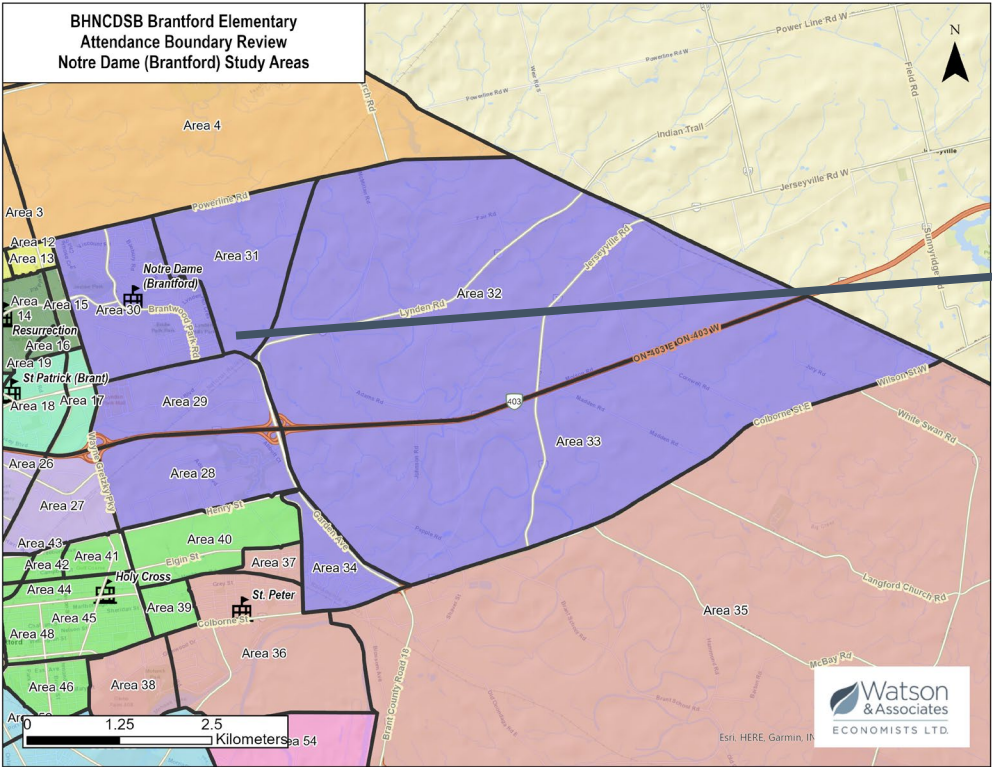
Current Situation

Growth Areas – Our Lady of Providence (Area 2, Area 3, Area 4, and Area 5)
Powerline West, Central and East Block Plans & Balmoral Block Plan



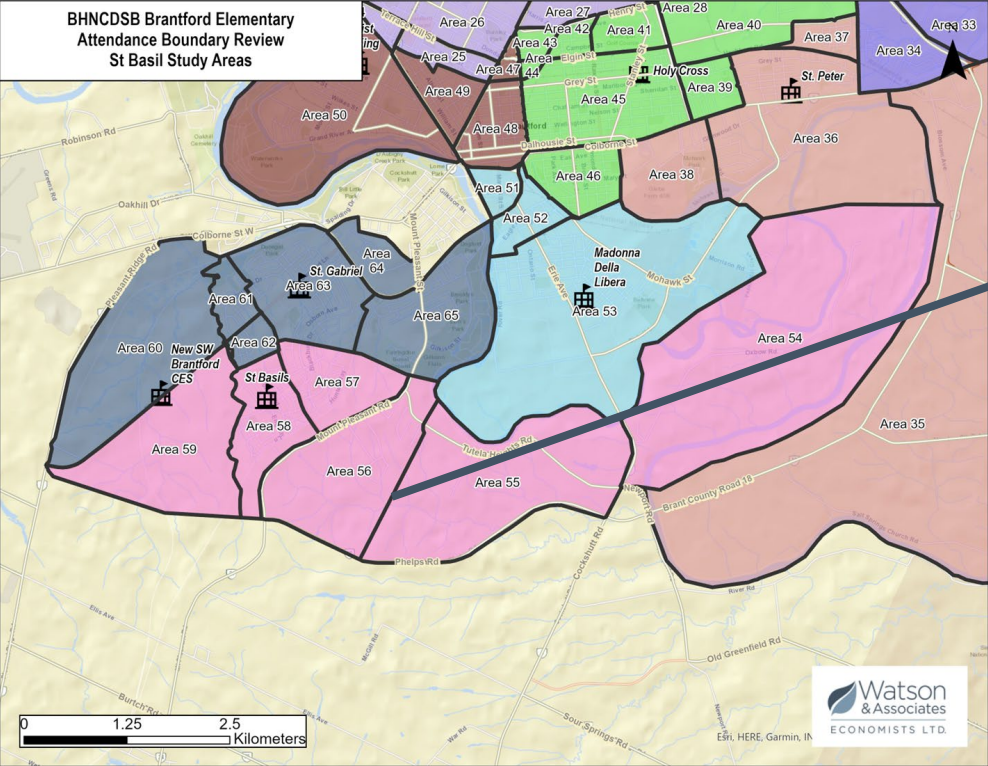
Current Situation

Growth Areas – Notre Dame (Area 31) Lynden Garden Block Plan



Current Situation

Growth Areas – St. Basil (Area 55 and Area 56)
Tutela Heights East Block Plan



City of Brantford Attendance Boundary Review

Preliminary Ideas for Consideration

1. Boundary Adjustment

- Consultant believes there is potential to adjust the following areas (please refer to PDF of study areas by school attendance boundary):***

Focus Schools	Identified Challenge	Relief School(s)	Study Area(s) to Move
St. Leo	Overcapacity without use of 6 portables on site	Our Lady of Providence	<ul style="list-style-type: none"> Area 7 Area 8
		St. Patrick	<ul style="list-style-type: none"> Area 9 Area 10
		Resurrection	<ul style="list-style-type: none"> Area 11 Area 13
St. Peter	Overcapacity without use of 2 portables on site	Notre Dame	<ul style="list-style-type: none"> Area 35
		Madonna Della Libera	<ul style="list-style-type: none"> Area 38
Christ the King	Overcapacity without use of 3 portables on site	St. Pius	<ul style="list-style-type: none"> Area 47 Area 48 Area 49
Holy Cross	Overcapacity without use of 3 portables on site	Madonna Della Libera	<ul style="list-style-type: none"> Area 46
		St. Pius	<ul style="list-style-type: none"> Area 41 Area 42 Area 43 Area 44
St. Basil	Overcapacity with use of 8 portables on site	New SW Brantford School	<ul style="list-style-type: none"> Area 54 Area 55 Area 56 Area 59
		Madonna Della Libera	
St. Gabriel	Overcapacity without use of 6 portables on site	New SW Brantford School	<ul style="list-style-type: none"> Area 60 Area 61 Area 62 Area 64 Area 65 Area 65
		Madonna Della Libera	

City of Brantford Attendance Boundary Review

Preliminary Ideas for Consideration



2. Program Relocation

- ***Consider relocating the French Immersion program entirely to one school and establishing a single-track French Immersion school.***

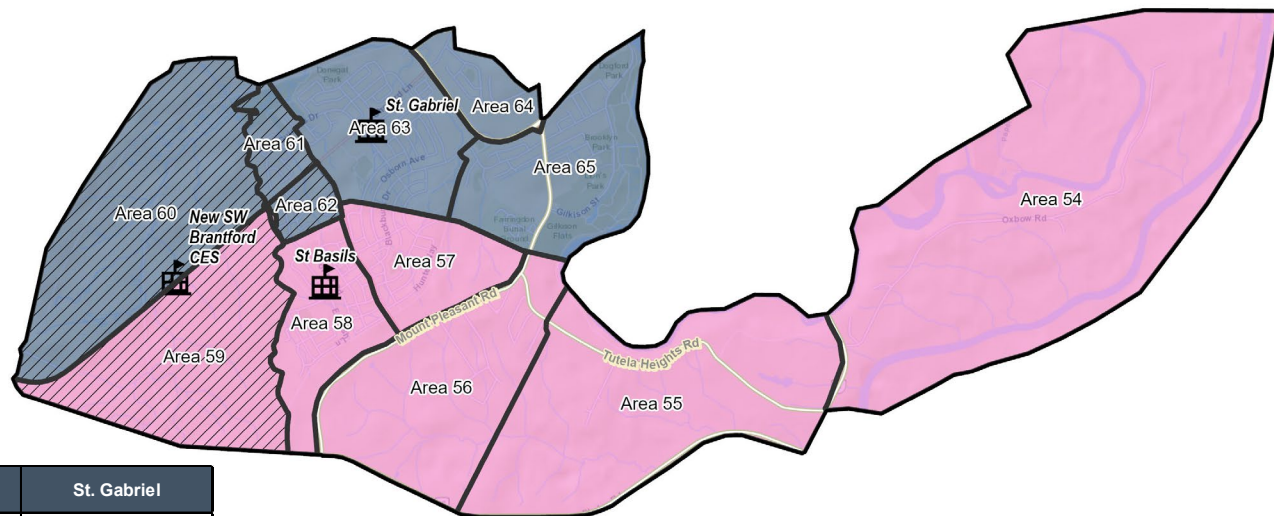
3. Grade Configuration

- ***Consider sending Grade 7s and 8s from overutilized schools to nearby secondary schools with potential space.***

City of Brantford Attendance Boundary Review

New SW Brantford Elementary School - Idea for Consideration 1

- Area 59 from St. Basil
- Areas 60-62 from St. Gabriel



Legend

- St. Basil Boundary
- St. Gabriel Boundary

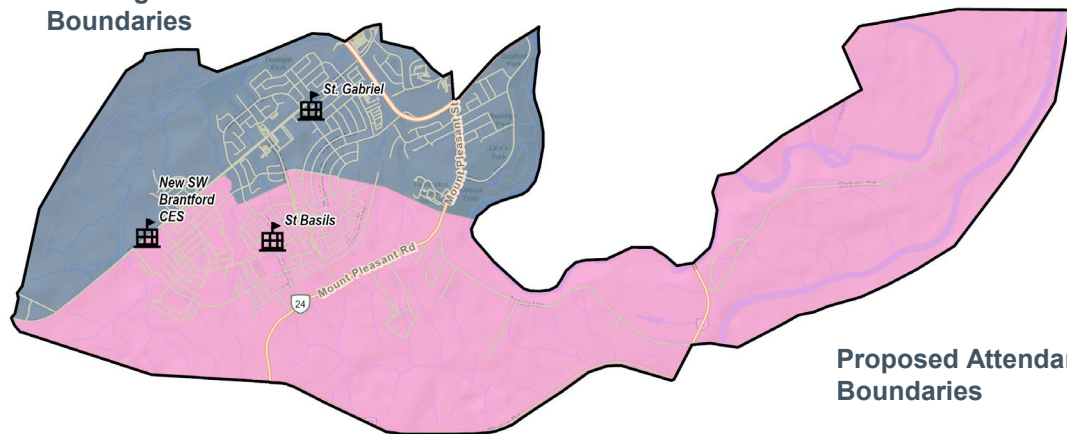
Grade	New SW Brantford School	St. Basil	St. Gabriel
JK	28	28	33
SK	38	32	28
Gr1	42	48	34
Gr2	33	30	33
Gr3	51	42	37
Gr4	40	39	39
Gr5	46	39	34
Gr6	43	41	35
Gr7	41	55	41
Gr8	41	39	40
Total Enrolment	403	393	354
OTG	513	484	389
Utilization (All)	79%	81%	91%
Portables	0	8	6
Utilization w/Port (All)	79%	59%	67%
Surplus/Decifitit Space	110	91	35

City of Brantford Attendance Boundary Review

New SW Brantford Elementary School - Idea for Consideration 1



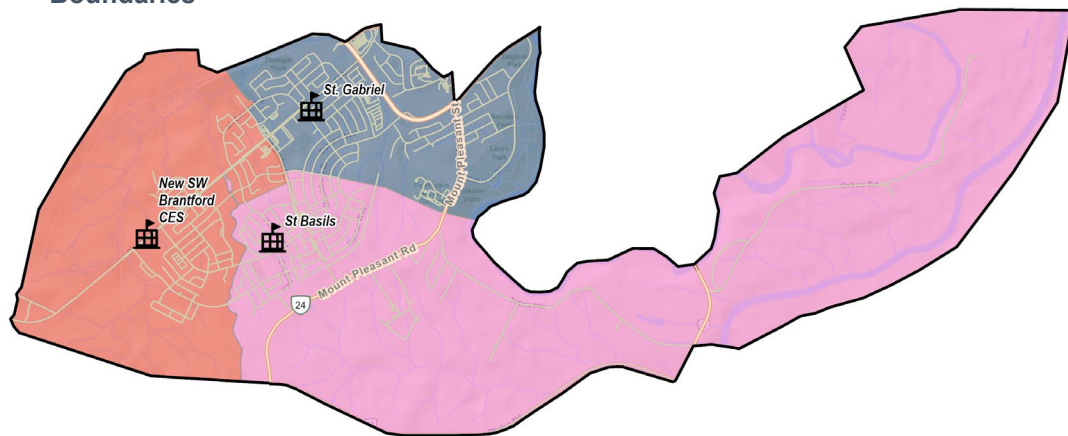
Existing Attendance Boundaries



Legend

- St. Basil Boundary
- St. Gabriel Boundary
- New SW Brantford Boundary

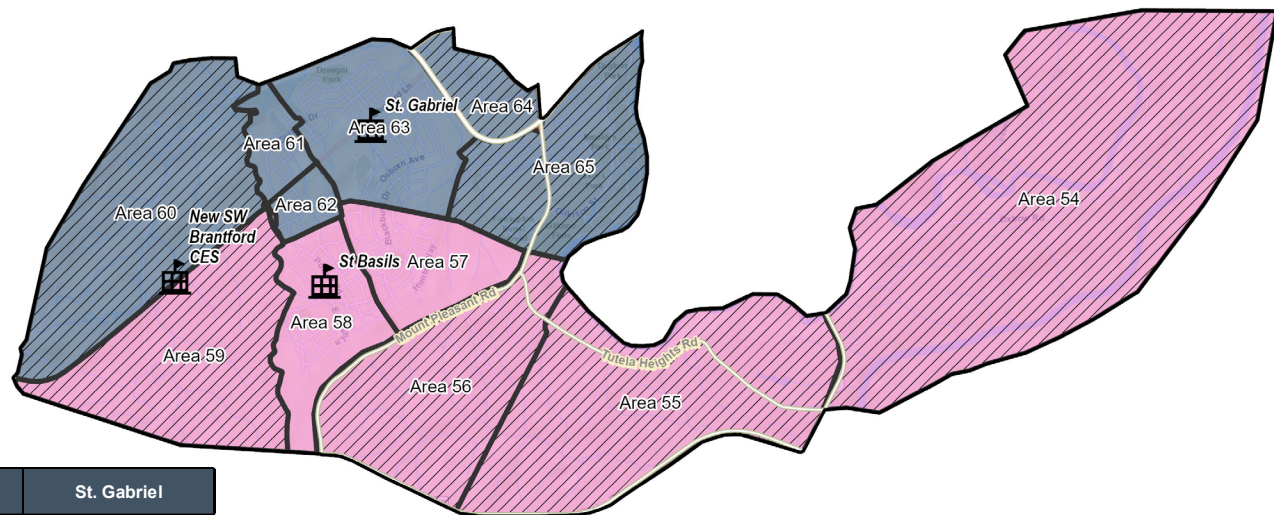
Proposed Attendance Boundaries



City of Brantford Attendance Boundary Review

New SW Brantford Elementary School - Idea for Consideration 2

- Area 54-56, and Area 59 from St. Basil
- Area 60, and 64-65 from St. Gabriel



Legend

- St. Basil Boundary
- St. Gabriel Boundary

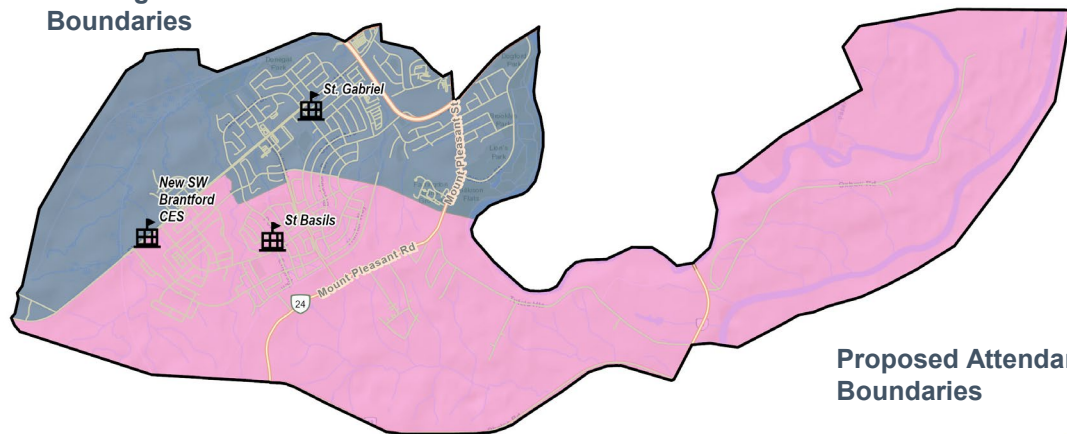
Grade	New SW Brantford School	St. Basil	St. Gabriel
JK	40	26	23
SK	38	29	31
Gr1	47	44	33
Gr2	30	29	37
Gr3	57	40	33
Gr4	52	35	31
Gr5	48	37	34
Gr6	45	38	36
Gr7	48	47	42
Gr8	38	36	46
Total Enrolment	443	361	346
OTG	513	484	389
Utilization (All)	86%	75%	89%
Portables	0	8	6
Utilization w/Port (All)	86%	54%	66%
Surplus/Decificit Space	70	123	43

City of Brantford Attendance Boundary Review

New SW Brantford Elementary School - Idea for Consideration 2



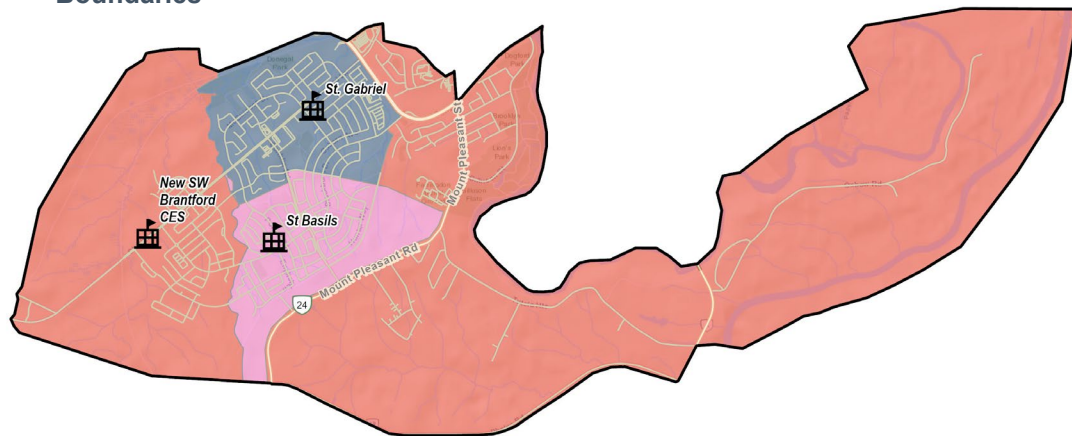
Existing Attendance Boundaries



Legend

- St. Basil Boundary
- St. Gabriel Boundary
- New SW Brantford Boundary

Proposed Attendance Boundaries



Key Questions



- Which areas should make up the New SW Brantford School boundary?
- Which areas does the committee feel are suitable/not suitable to move?
- Are there community connections to certain areas that may allow for a more appropriate boundary change?
- Should the FI program remain status quo?
 - If changes must be made to FI, do you think it is reasonable to move the program out of one of the Brantford dual-track schools (Madonna Della Libera and St. Leo) and consolidate it at another school to create a single-track FI school? (Some legislative considerations can be limiting factor here)
- Should grade configurations (JK-8 and 9-12) remain status quo?
 - If grade configurations are changed, do you think it is reasonable to send grade 7s and 8s to secondary schools?

Future Discussions: Implementation Decisions



- ***School Space Audits/Temporary spaces/Transportation***

- *Conduct school space audits to identify potential temporary holding spaces in under-utilized schools. Ensure that these spaces are adequately prepared to receive students during transition periods or boundary adjustments. Get details on impacts to transportation/bussing times.*

- ***Staffing requirements/needs***

- *Evaluate staffing adjustments needed to accommodate boundary changes and program shifts, including reallocating teaching and support staff, ensuring adequate administrative support, and hiring specialized teachers for expanded programs (e.g., French Immersion).*

- ***Transition Plan***

Next Steps



- Committee members to complete short survey regarding the second committee meeting and perspectives on the preliminary ideas for consideration (online)
- Committee members can submit questions or comments to brantfordreview@bhncdsb.ca
- Next Committee meeting: October 20, 2025
- Public meeting: December 1, 2025
- Prepare and present final options to Trustees for approval in Spring 2026



QUESTIONS