



## Brant County Attendance Boundary Review: Committee Meeting #3

Brant Haldimand Norfolk Catholic District School Board  
Revised December 8, 2025



# What We Heard

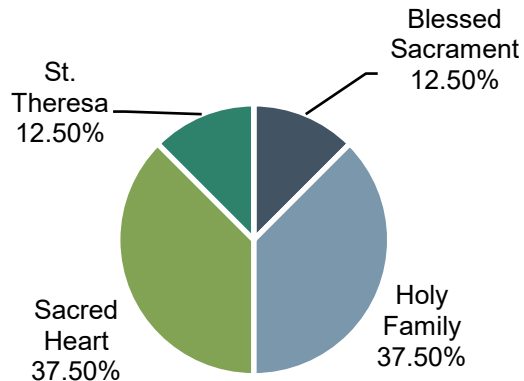
# Committee Contributions

## Survey #1 – What we heard...

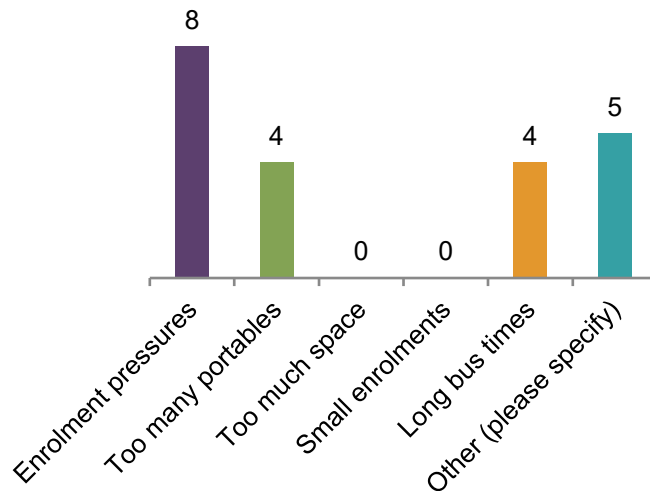
8 Total Responses



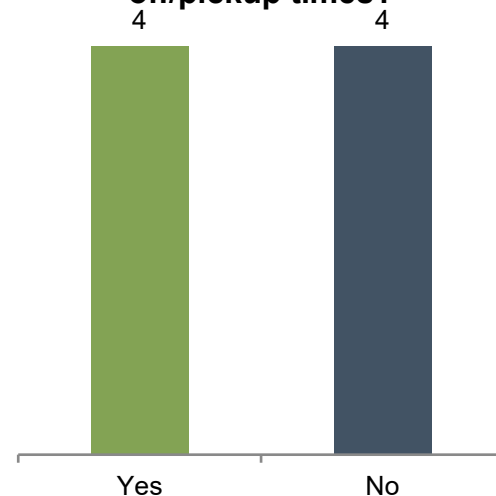
**What School are you affiliated with:**



**What are some initial issues you see with the existing conditions at your school?**



**Do you feel there is too much traffic at your school during drop-off/pickup times?**



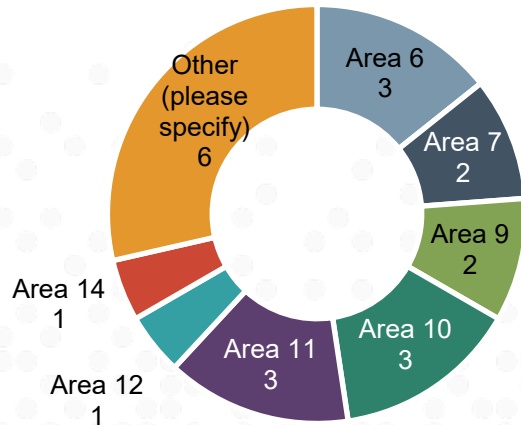
# Committee Contributions

## Survey #1 – What we heard...

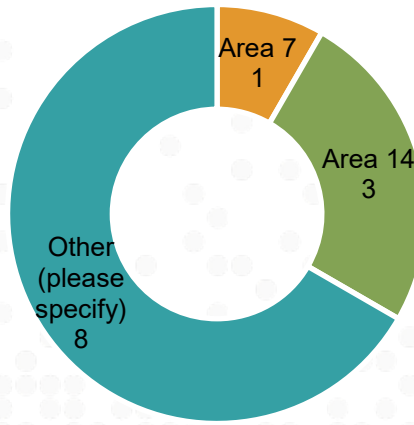
8 Total Responses



Of the areas that have been proposed to move, please select the area(s) you feel should move?



Of the areas that have been proposed to move, please select the area(s) you feel should not move?



### Why Should Those Areas Move/Not Move?

- There should be alignment with the City of Brantford municipal boundary for the following areas (these areas should attend a school in Brantford):
  - Area 6
  - Area 9
  - Area 10
- ***Should the same consideration be given to Areas 1-4 from St. Theresa?***
- Committee would like to further discuss Area 11 moving
- Questions as to why the Princeton/Dumbo areas were not included in the options
  - ***these areas are within the Sacred Heart FI boundary only and the options are looking at changing the English-Track boundaries***

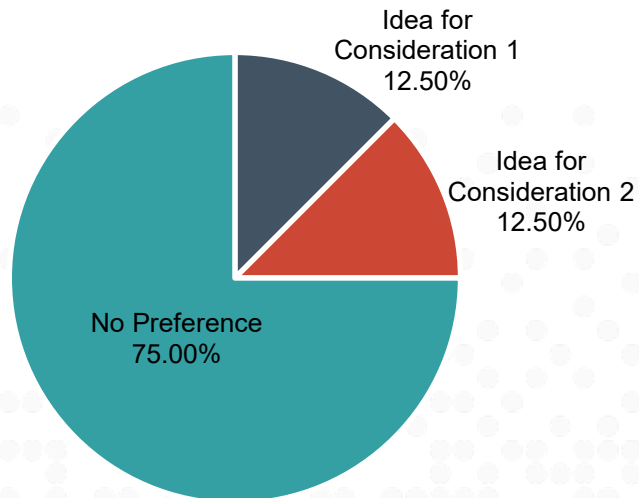
# Committee Contributions

## Survey #1 – What we heard...

8 Total Responses



Of the two New Paris Elementary School ideas for consideration, which do you prefer more?



### Why is that the preferred scenario?

- Consideration 2 could work with adjustments
  - ***Area 7 remains at St. Theresa and Area 14 remains at Holy Family***
- Dependent on future development
- Some respondents chose no preference due to missing FI area (Princeton/Dumbo)

### Are there any unique circumstances surrounding your school and community that you feel Board staff and the consultant team should be aware of?

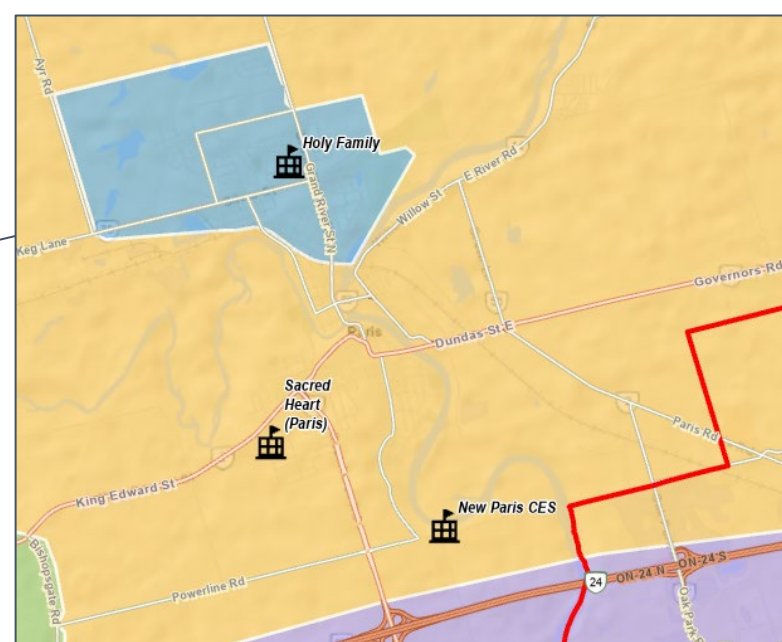
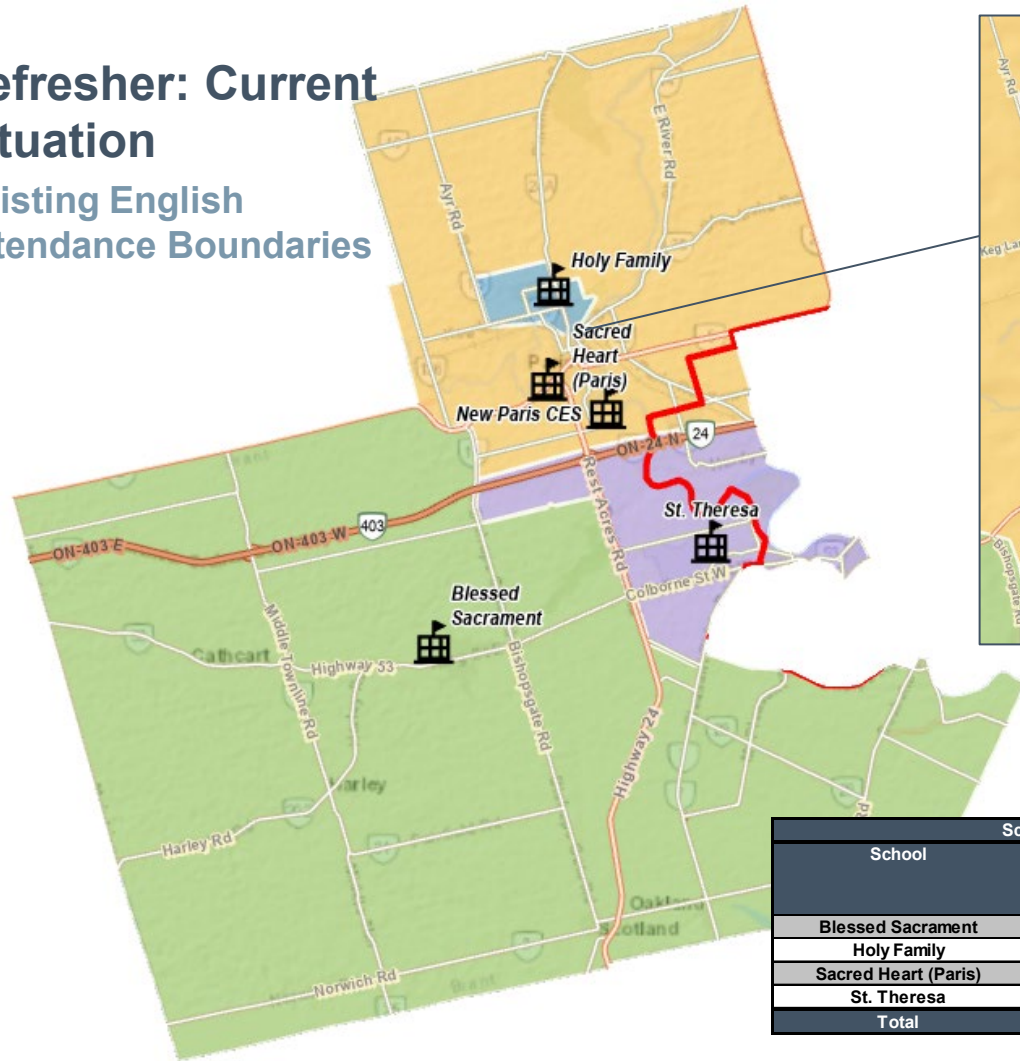
- Concern for dividing school communities (i.e. Holy Family)
- Questions for how the FI program is being considered

# Refresher: Current Situation



# Refresher: Current Situation

## Existing English Attendance Boundaries



School Information					2025			
School	Programs	OTG	Portables	OTG Incl. Port. OTG	Enrol. (Oct)	Utiliz. %	Utiliz. % w/ Port	Surplus/ Deficit Space
Blessed Sacrament	RT	236		236	281	119%	119%	-45
Holy Family	RT	164	3	233	264	161%	113%	-100
Sacred Heart (Paris)	DT-FI	420	12	696	715	170%	103%	-295
St. Theresa	RT	210	2	256	262	125%	102%	-52
Total		1,030	17	1,421	1,522	148%	107%	-492

# Refresher: Current Situation

## Historical and Projected Enrolments and Facility Utilization by School



School Information					2025				2029				2034			
School	Programs	OTG	Portables	OTG Includ. Port. OTG	Enrol. (Oct)	Utiliz. %	Utiliz. % w/ Port	Surplus/ Deficit Space	Enrol. (Oct)	Utiliz. %	Utiliz. % w/ Port	Surplus/ Deficit Space	Enrol. (Oct)	Utiliz. %	Utiliz. % w/ Port	Surplus/ Deficit Space
New Paris School	RT	513	0	513	-	-	-	513	-	-	-	513	-	-	-	513
Blessed Sacrament	RT	236	0	236	281	119%	119%	-45	303	128%	128%	-67	307	130%	130%	-71
Holy Family	RT	164	3	233	264	161%	113%	-100	316	193%	136%	-152	381	232%	163%	-217
Sacred Heart (Paris)	DT-FI	420	12	696	715	170%	103%	-295	909	217%	131%	-489	1,087	259%	156%	-667
St. Theresa	RT	210	2	256	262	125%	102%	-52	260	124%	101%	-50	238	113%	93%	-28
Total		1,543	17	1,934	1,522	148%	107%	-492	1,788	116%	92%	-245	2,013	130%	104%	-470

Note: New Paris School OTG incorporated in 2029 and 2034.

Source: Current enrolment derived from official October 31, 2025 student plots.

**Enrol.** = Enrolment  
**Port** = Portables  
**OTG** = On-the-ground capacity  
**Utiliz. %** = Utilization %  
**Utiliz. % w/ Port.** = Utilization with Portables



# Refresher: Current Situation

## Snapshot: Enrolment and Facility Utilization by Program

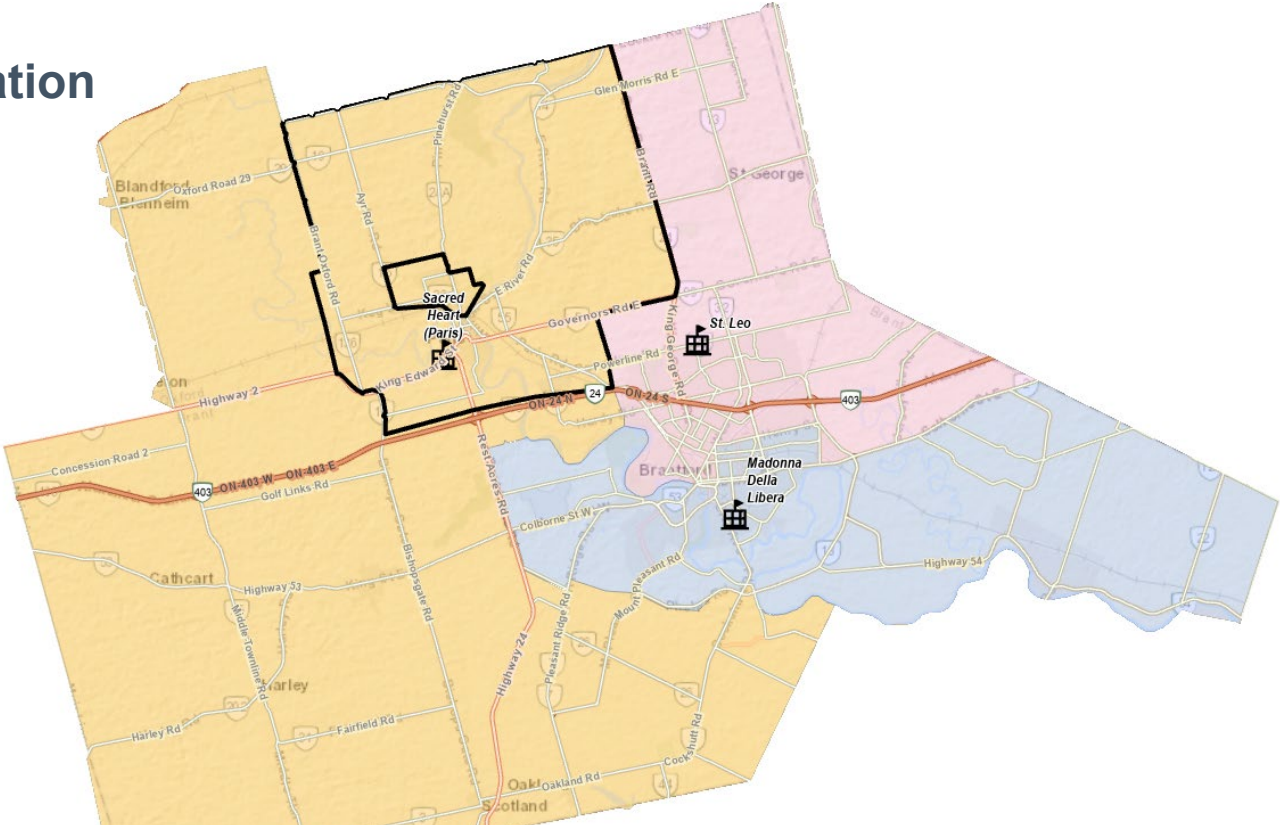
Legend

Madonna Della Libera FI

Sacred Heart Paris FI

St. Leo FI

Sacred Heart Paris English



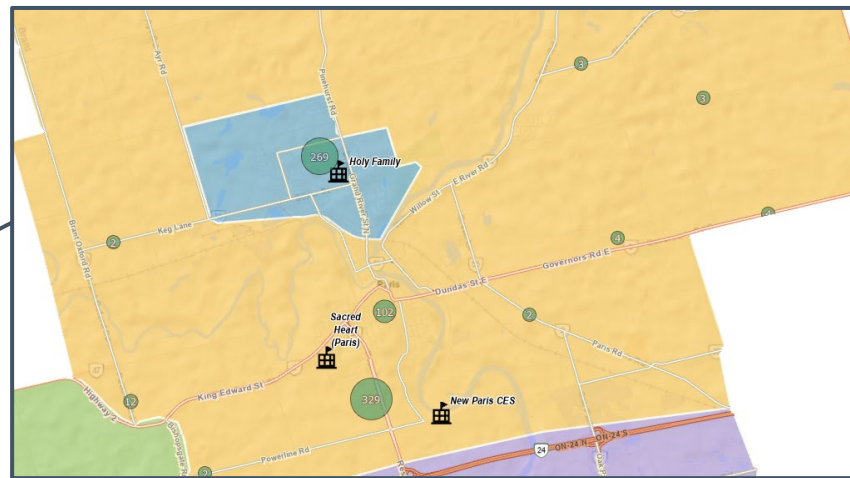
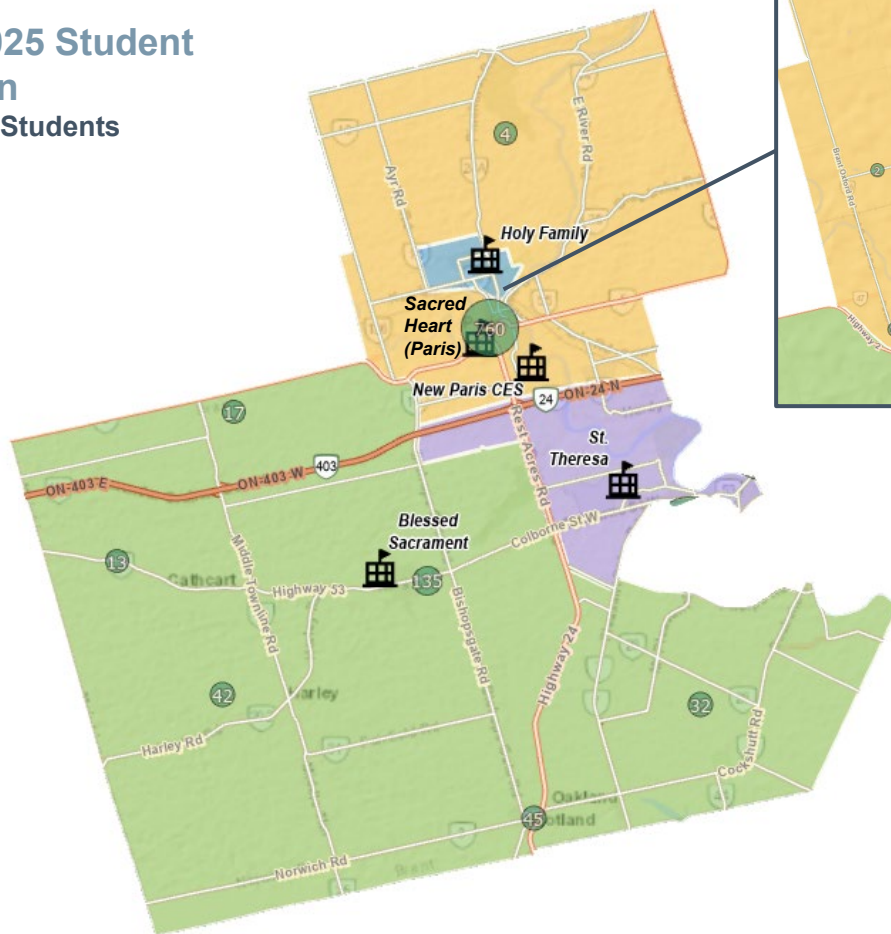
School	On-the-Ground Capacity	Portables	Regular Track	French Immersion	Total Enrolment	Utilization including FI	Utilization excluding FI	Utilization excluding FI	Utilization excluding FI
St. Leo	288	6	194	184	378	131%	67%	89%	46%
Madonna Della Libera	466	0	204	157	361	77%	44%	77%	44%
Sacred Heart (Paris)	420	12	506	209	715	170%	120%	103%	73%
Total	1,174	18	904	550	1,454	124%	77%	92%	57%

Source: Derived from October 2025 student plots.  
Note: The map has been revised to include Princeton/Drumbo area of Sacred Heart's FI boundary.

# Refresher: Current Situation

## October 2025 Student Distribution

### English Track Students



# Refresher: Current Situation

## October 2025 Student Distribution

French Immersion Students



# Refresher: Current Situation

## Snapshot: Students Returned to Home Boundary



Attending School	OTG	Current Enrolment	Current Utilization	Current Portables	Students Returned Enrolment	Students Returned Utilization	Portables Needed*	In	Out	Net (In minus Out)
Sacred Heart (Paris)	420	715	170%	12	723	172%	12	23	31	-8
Holy Family	164	264	161%	3	250	152%	3	20	6	14
Blessed Sacrament	236	281	119%	0	287	122%	0	14	20	-6
St. Theresa	210	262	125%	2	275	131%	2	28	41	-13
<b>Total</b>	<b>1,030</b>	<b>1,522</b>	<b>148%</b>	<b>17</b>	<b>1,535</b>	<b>149%</b>	<b>17</b>	<b>85</b>	<b>98</b>	<b>-13</b>

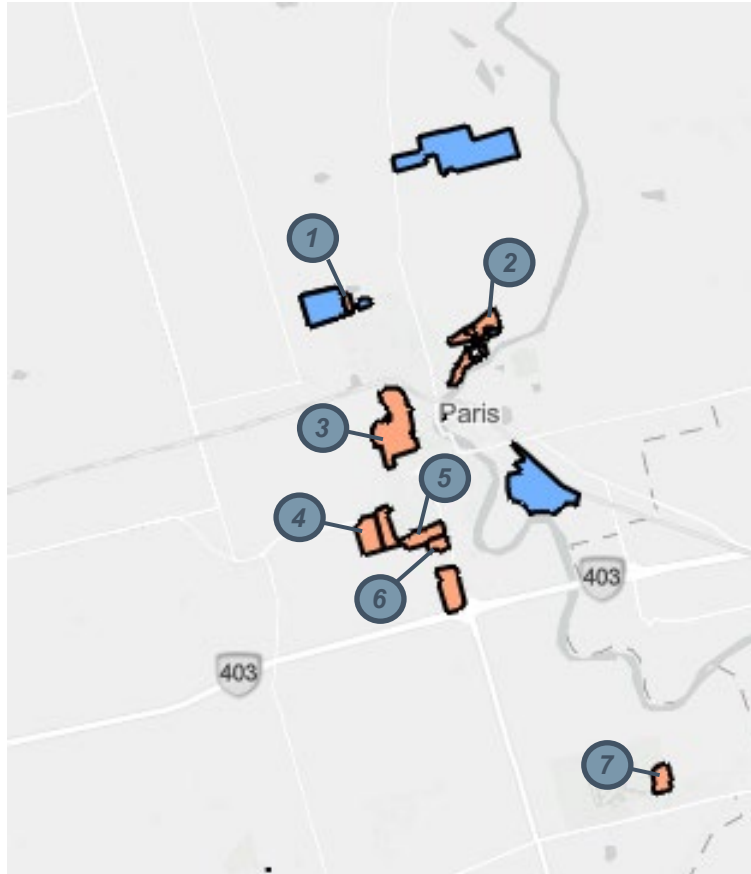
Note: Students returned has been revised to include students from the “right-to-attend” area of Princeton/Drumbo, affecting Blessed Sacrament and Sacred Heart (Paris).

Portables Needed calculated by subtracting OTG from existing students and dividing by 23 (1 classroom).

Source: Current enrolment and students returned derived from October 2025 student plots.

# Refresher: Current Situation

## Active Developments – Plans of Subdivision

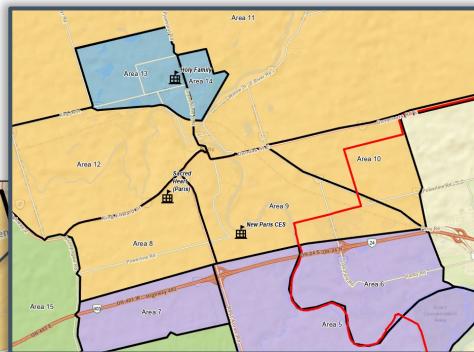
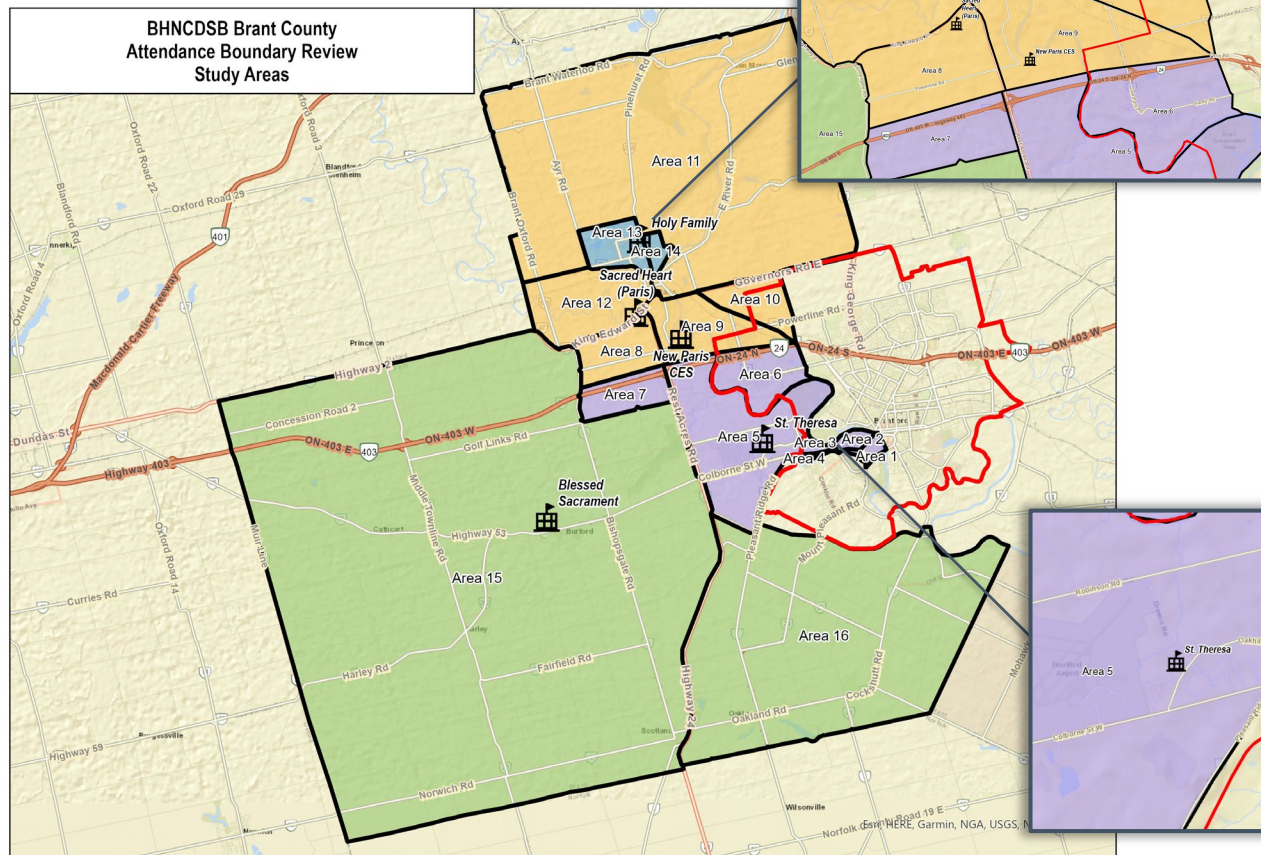


Number	Development Name	Number of Units	School Boundary Development Falls Within
1	Watts Pond Subdivision	75 total units (mix of low and medium density)	Holy Family
2	Paris Grand Subdivision	747 total units (mix of low and medium density)	Holy Family/ Sacred Heart
3	Nith Subdivision	565 total units (mix of low, medium and high density)	Sacred Heart
4	Boulder Creek Subdivision	698-788 total units (mix of low, medium and high density)	Sacred Heart
5	Arlington Meadows	106 total units (mix of low and medium density)	Sacred Heart
6	Scenic Ridge	423 total units (mix of low and medium density)	Sacred Heart
7	Summit Estates	36 total units (low density)	St. Theresa

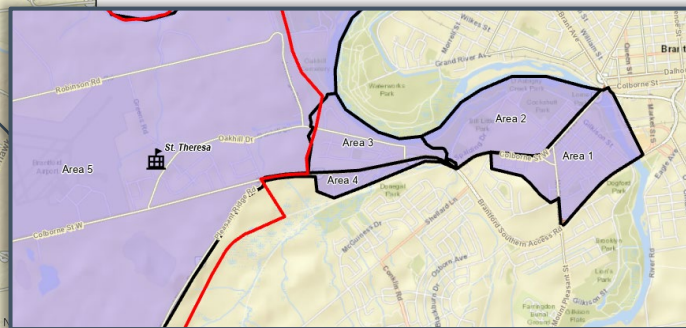


# Refresher: Current Situation

## Existing Attendance Boundaries and Study Areas



School	Study Areas That Make Up Boundary
St. Theresa	<ul style="list-style-type: none"> <li>Area 1</li> <li>Area 2</li> <li>Area 3</li> <li>Area 4</li> <li>Area 5</li> <li>Area 6</li> <li>Area 7</li> </ul>
Sacred Heart	<ul style="list-style-type: none"> <li>Area 8</li> <li>Area 9</li> <li>Area 10</li> <li>Area 11</li> <li>Area 12</li> </ul>
Holy Family	<ul style="list-style-type: none"> <li>Area 13</li> <li>Area 14</li> </ul>
Blessed Sacrament	<ul style="list-style-type: none"> <li>Area 15</li> <li>Area 16</li> </ul>



Please refer to PDF of study areas by school attendance boundary.



# Refresher: Preliminary Ideas for Consideration

# Brant County Attendance Boundary Review

## Preliminary Ideas for Consideration

### 1. Boundary Adjustment

- ***Consultant believes there is potential to adjust the following areas (please refer to PDF of study areas by school attendance boundary):***

Focus Schools	Identified Challenge	Relief School(s)	Study Area(s) to Move
Sacred Heart	Overcapacity without use of portables	New Paris School	<ul style="list-style-type: none"><li>• Area 9</li><li>• Area 10</li><li>• Area 11</li><li>• Area 12</li></ul>
Holy Family	Overcapacity with use of portables	New Paris School	<ul style="list-style-type: none"><li>• Area 14</li></ul>
St. Theresa	Overcapacity without use of portables	New Paris School	<ul style="list-style-type: none"><li>• Area 6</li></ul>
		Sacred Heart	<ul style="list-style-type: none"><li>• Area 7</li></ul>

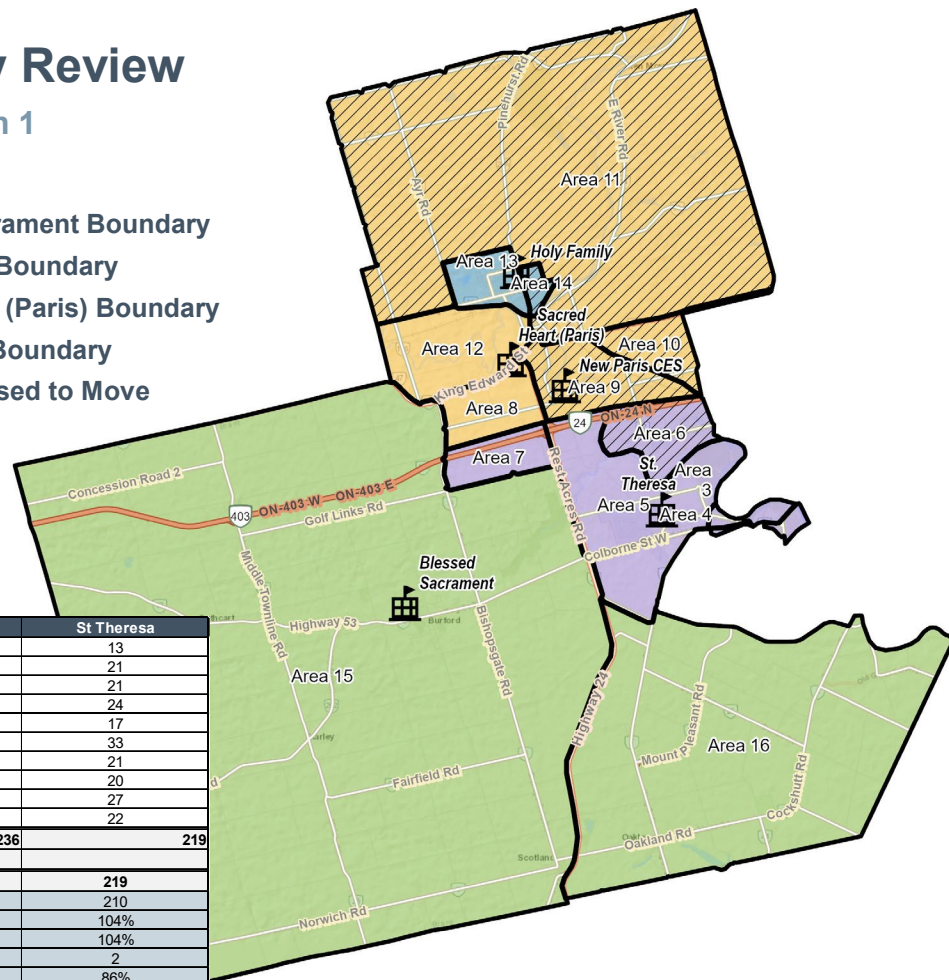
# Brant County Attendance Boundary Review

## New Paris Elementary School - Idea for Consideration 1

- Area 9-11 from Sacred Heart
- Area 14 from Holy Family
- Area 6 from St. Theresa

### Legend

- Blessed Sacrament Boundary
- Holy Family Boundary
- Sacred Heart (Paris) Boundary
- St. Theresa Boundary
- Areas Proposed to Move

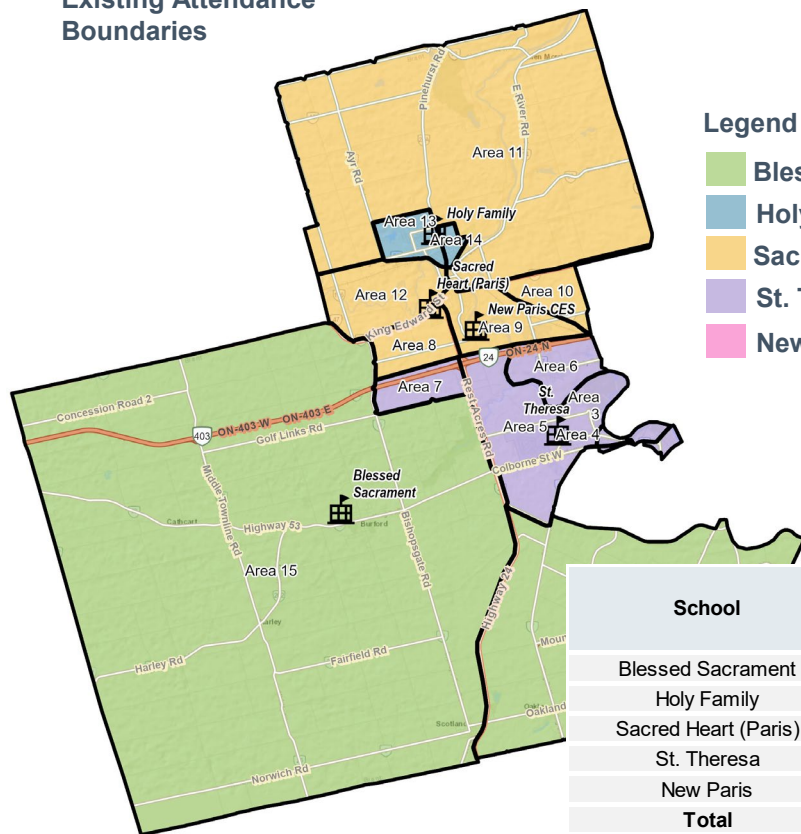


Grade	Blessed Sacrament	Holy Family	New Paris School	Sacred Heart (Paris)	St Theresa
JK	22	21	33	16	13
SK	20	26	27	24	21
Gr1	28	17	30	23	21
Gr2	29	30	42	25	24
Gr3	27	20	37	19	17
Gr4	28	23	49	36	33
Gr5	34	31	42	26	21
Gr6	33	17	36	26	20
Gr7	39	14	30	20	27
Gr8	27	18	35	21	22
<b>Total RT Enrolment</b>	<b>287</b>	<b>217</b>	<b>361</b>	<b>236</b>	<b>219</b>
<b>FI Enrolment</b>				<b>209</b>	
<b>Total Enrolment</b>	<b>287</b>	<b>217</b>	<b>361</b>	<b>445</b>	<b>219</b>
OTG	236	164	513	420	210
Utilization (RT only)	122%	132%	70%	56%	104%
Utilization (All)	122%	132%	70%	106%	104%
Portables		3		12	2
Utilization w/Port (RT only)	122%	93%	70%	34%	86%
Utilization w/Port (All)	122%	93%	70%	64%	86%
Surplus/Deficit Space	-51	-53	152	-25	-9

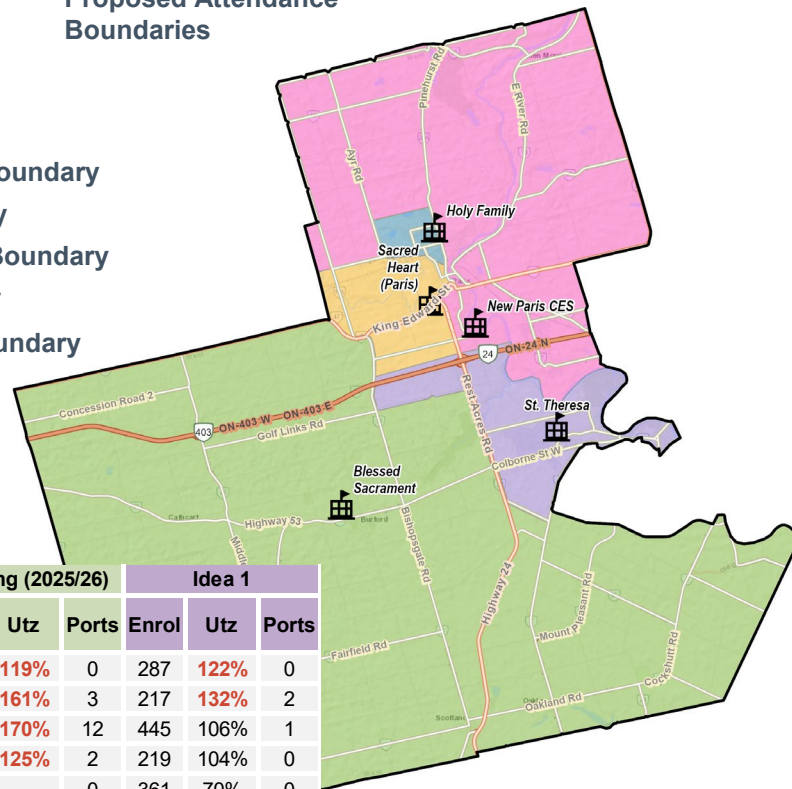
# Brant County Attendance Boundary Review

## New Paris Elementary School - Idea for Consideration 1

### Existing Attendance Boundaries



### Proposed Attendance Boundaries



### Legend

- Blessed Sacrament Boundary
- Holy Family Boundary
- Sacred Heart (Paris) Boundary
- St. Theresa Boundary
- New Paris School Boundary

School	On-the-Ground Capacity	Existing (2025/26)			Idea 1		
		Enrol	Utz	Ports	Enrol	Utz	Ports
Blessed Sacrament	236	281	119%	0	287	122%	0
Holy Family	164	264	161%	3	217	132%	2
Sacred Heart (Paris)	420	715	170%	12	445	106%	1
St. Theresa	210	262	125%	2	219	104%	0
New Paris	513	-	-	0	361	70%	0
<b>Total</b>	<b>1,543</b>	<b>1,522</b>	<b>148%</b>	<b>17</b>	<b>1,529</b>	<b>99%</b>	<b>4</b>

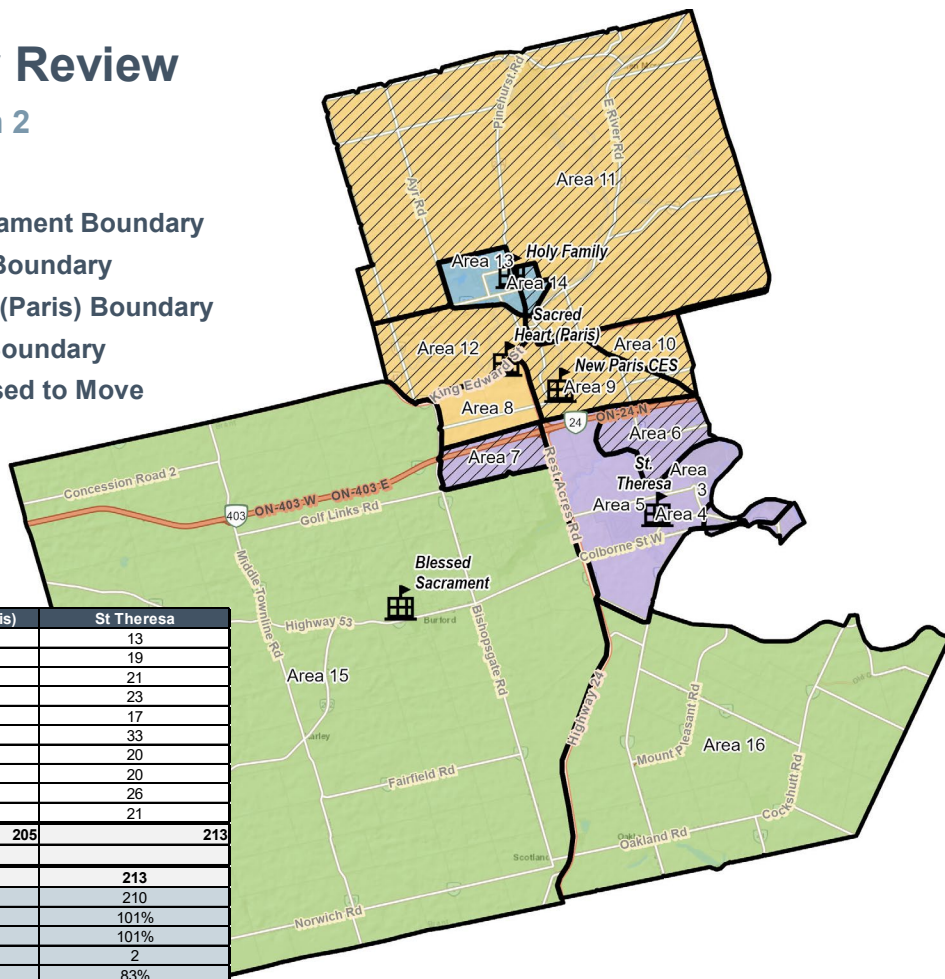
# Brant County Attendance Boundary Review

## New Paris Elementary School - Idea for Consideration 2

- Area 9-12 from Sacred Heart
- Area 14 from Holy Family
- Area 6 from St. Theresa
- Area 7 from St. Theresa becomes part of new Sacred Heart boundary

### Legend

- Blessed Sacrament Boundary
- Holy Family Boundary
- Sacred Heart (Paris) Boundary
- St. Theresa Boundary
- Areas Proposed to Move



Grade	Blessed Sacrament	Holy Family	New Paris School	Sacred Heart (Paris)	St Theresa
JK	22	21	34	15	13
SK	20	26	32	21	19
Gr1	28	17	31	22	21
Gr2	29	30	45	23	23
Gr3	27	20	39	17	17
Gr4	28	23	58	27	33
Gr5	34	31	46	23	20
Gr6	33	17	41	21	20
Gr7	39	14	33	18	26
Gr8	27	18	39	18	21
<b>Total RT Enrolment</b>	<b>287</b>	<b>217</b>	<b>398</b>	<b>205</b>	<b>213</b>
<b>FI Enrolment</b>					
<b>Total Enrolment</b>	<b>287</b>	<b>217</b>	<b>398</b>	<b>414</b>	<b>213</b>
OTG	236	164	513	420	210
Utilization (RT only)	122%	132%	78%	49%	101%
Utilization (All)	122%	132%	78%	99%	101%
Portables		3		12	2
Utilization w/Port (RT only)	122%	93%	78%	29%	83%
Utilization w/Port (All)	122%	93%	78%	59%	83%
Surplus/Deficit Space	-51	-53	115	6	-3

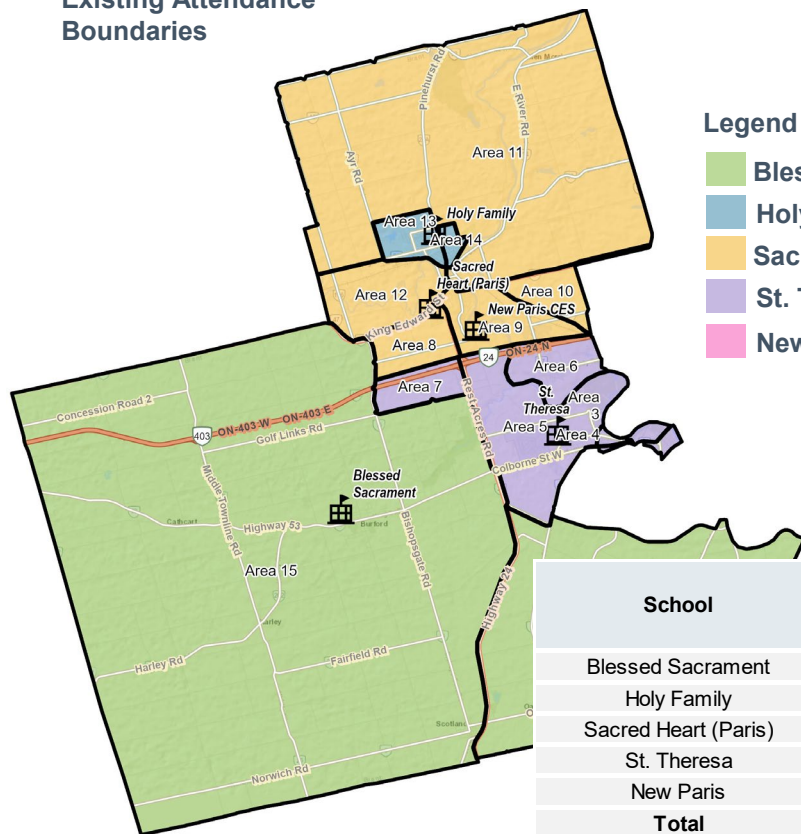


# Brant County Attendance Boundary Review

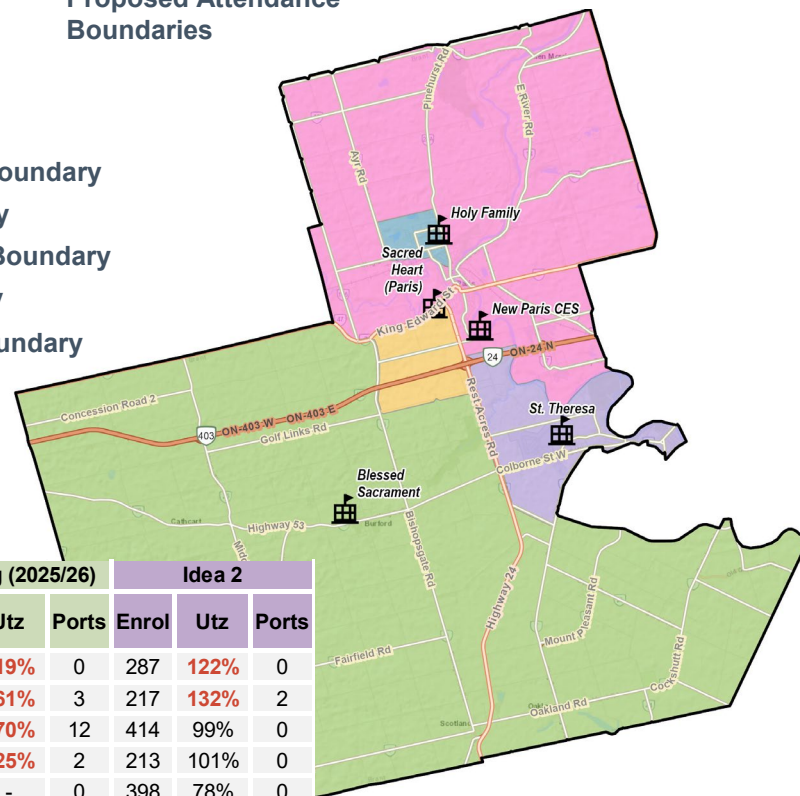
## New Paris Elementary School - Idea for Consideration 2



### Existing Attendance Boundaries



### Proposed Attendance Boundaries



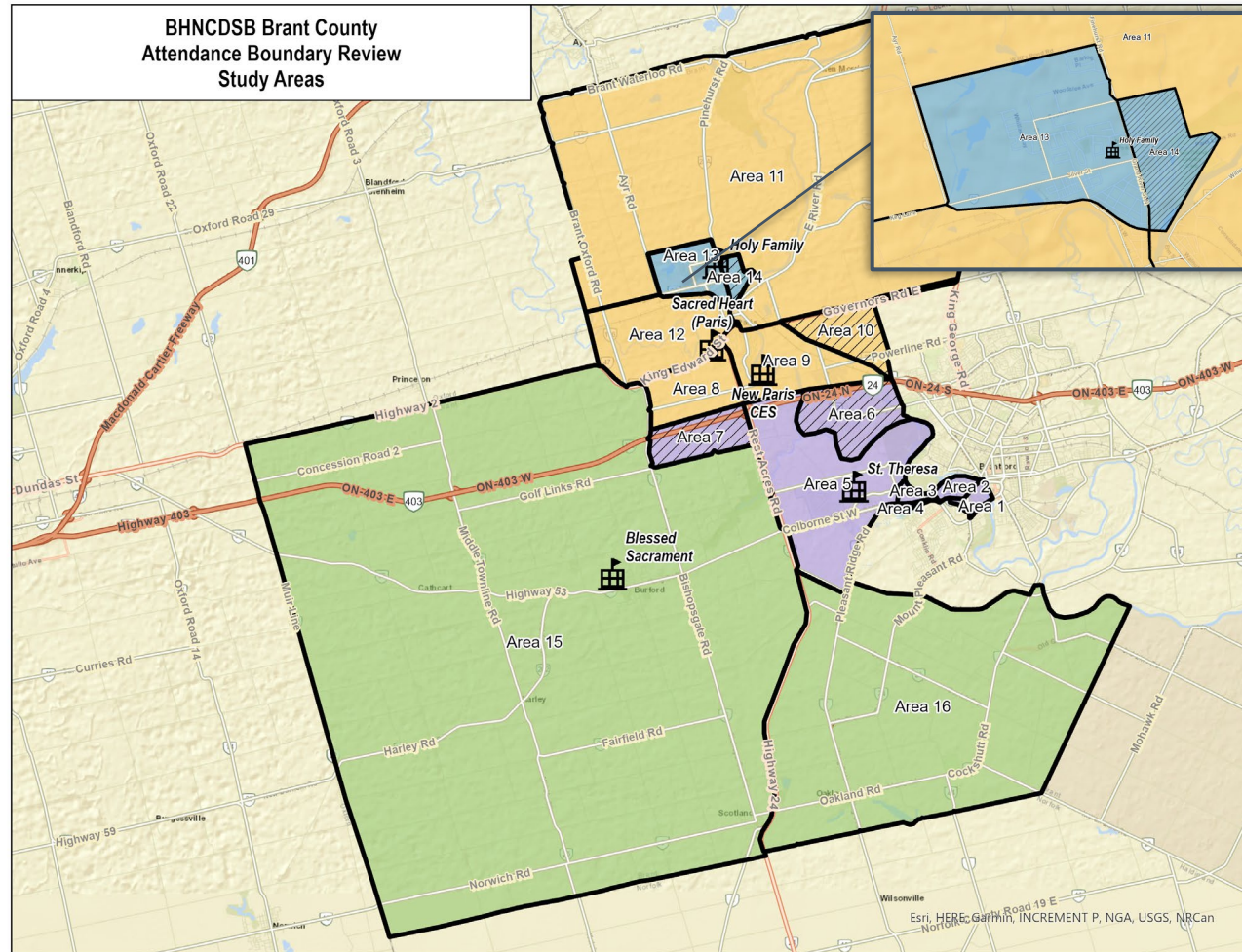
### Legend

- Blessed Sacrament Boundary
- Holy Family Boundary
- Sacred Heart (Paris) Boundary
- St. Theresa Boundary
- New Paris School Boundary

School	On-the-Ground Capacity	Existing (2025/26)			Idea 2		
		Enrol	Utz	Ports	Enrol	Utz	Ports
Blessed Sacrament	236	281	119%	0	287	122%	0
Holy Family	164	264	161%	3	217	132%	2
Sacred Heart (Paris)	420	715	170%	12	414	99%	0
St. Theresa	210	262	125%	2	213	101%	0
New Paris	513	-	-	0	398	78%	0
<b>Total</b>	<b>1,543</b>	<b>1,522</b>	<b>148%</b>	<b>17</b>	<b>1,529</b>	<b>99%</b>	<b>2</b>



# Committee Considerations



# Brant County Attendance Boundary Review

## Committee Considerations

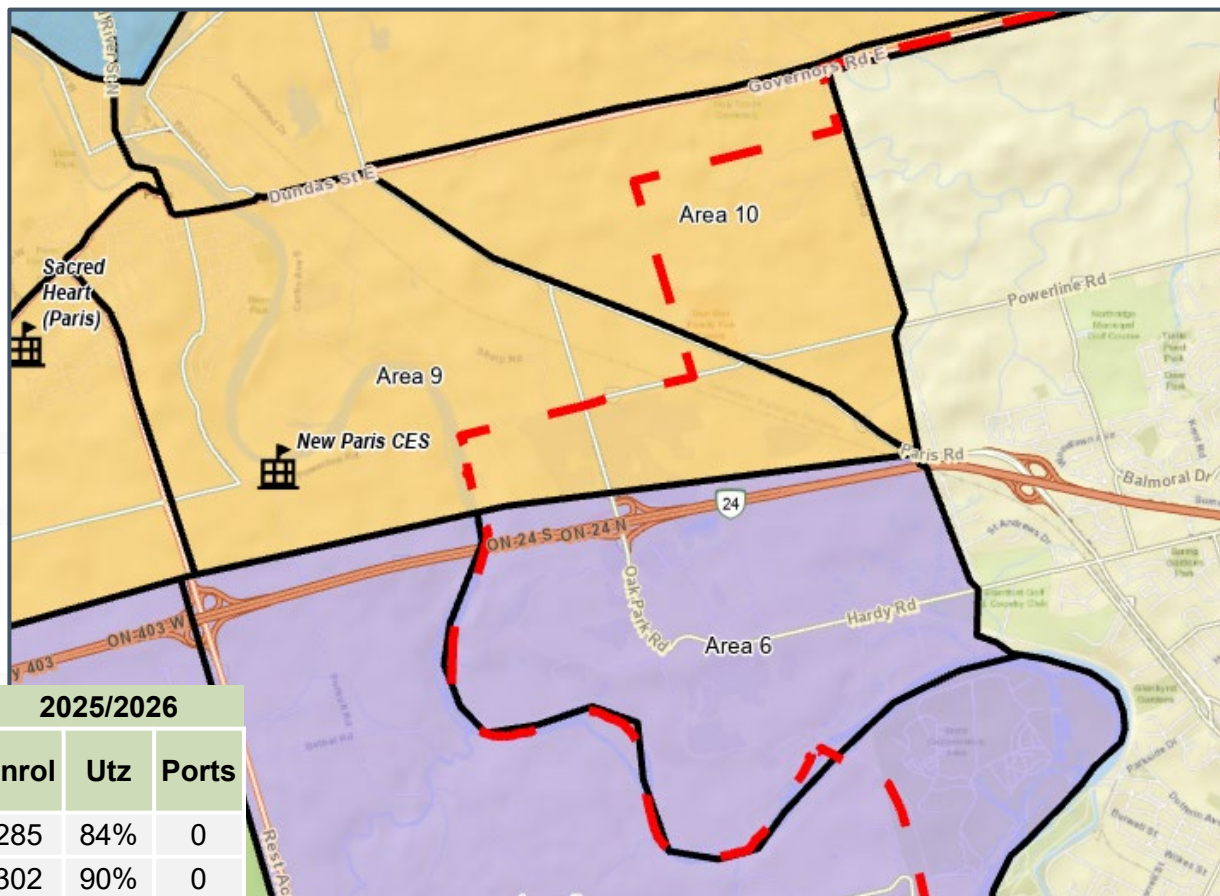
The committee highlighted the following study areas to not move:

## Align with City of Brantford Boundary:

- Area 6
- Area 9
- Area 10

## Neighbouring Schools:

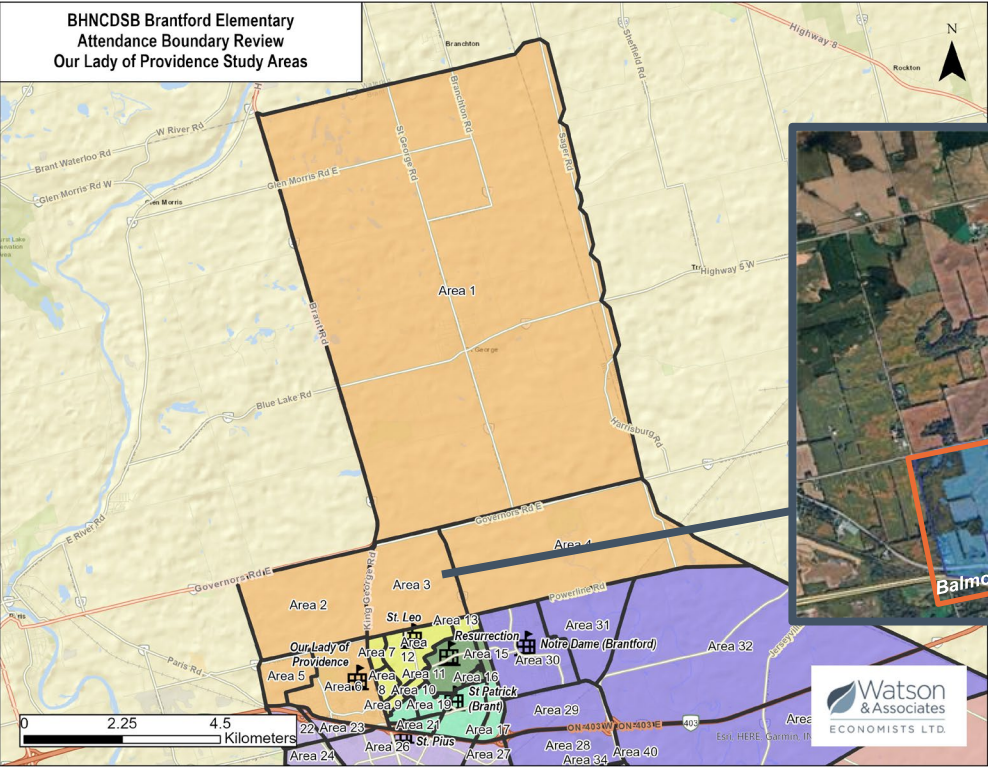
School	On-the-Ground Capacity	2025/2026		
		Enrol	Utz	Ports
Our Lady of Providence	340	285	84%	0
St. Pius	337	302	90%	0
<b>Total</b>	<b>677</b>	<b>587</b>	<b>87%</b>	<b>0</b>





# Brant County Attendance Boundary Review

Growth Areas – Our Lady of Providence  
Powerline West, Central and East Block Plans & Balmoral Block Plan



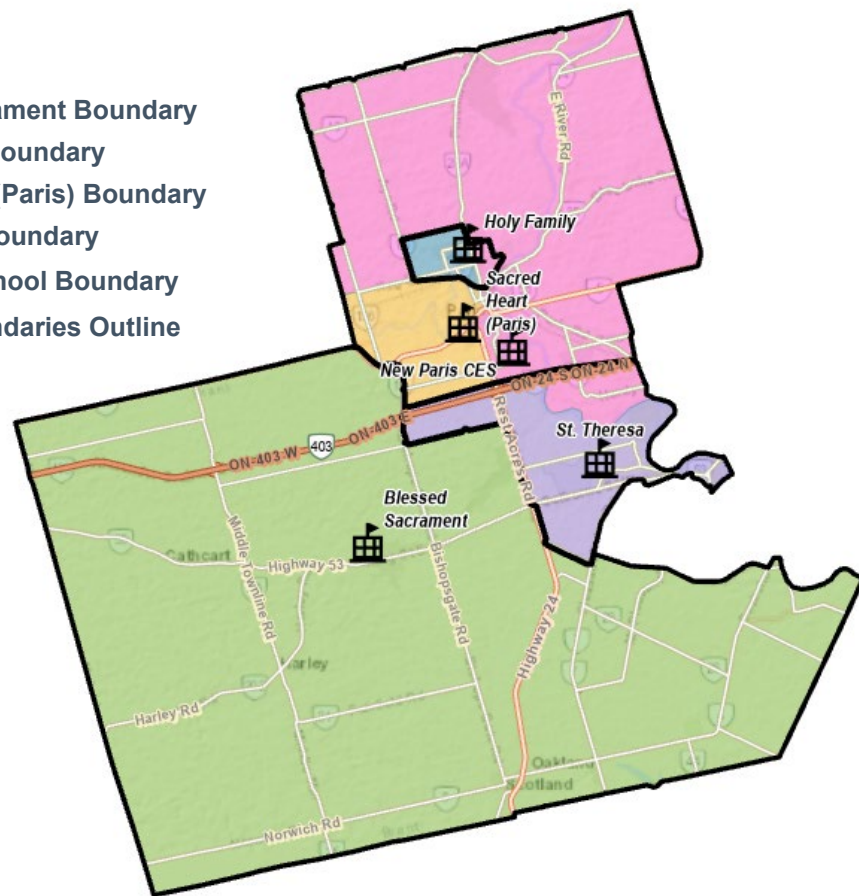
# Brant County Attendance Boundary Review

## Idea for Consideration 1 – Committee Considerations

Study Area	Existing Boundary	Proposed Boundary
Area 1	St. Theresa	St. Theresa
Area 2		
Area 3		
Area 4		
Area 5		
<b>Area 6</b>	Sacred Heart	New Paris School
Area 7		St. Theresa
Area 8		Sacred Heart
Area 9		New Paris School
Area 10		
Area 11		
Area 12	Holy Family	Sacred Heart
Area 13		Holy Family
<b>Area 14</b>		New Paris School
Area 15	Blessed Sacrament	Blessed Sacrament
Area 16		

### Legend

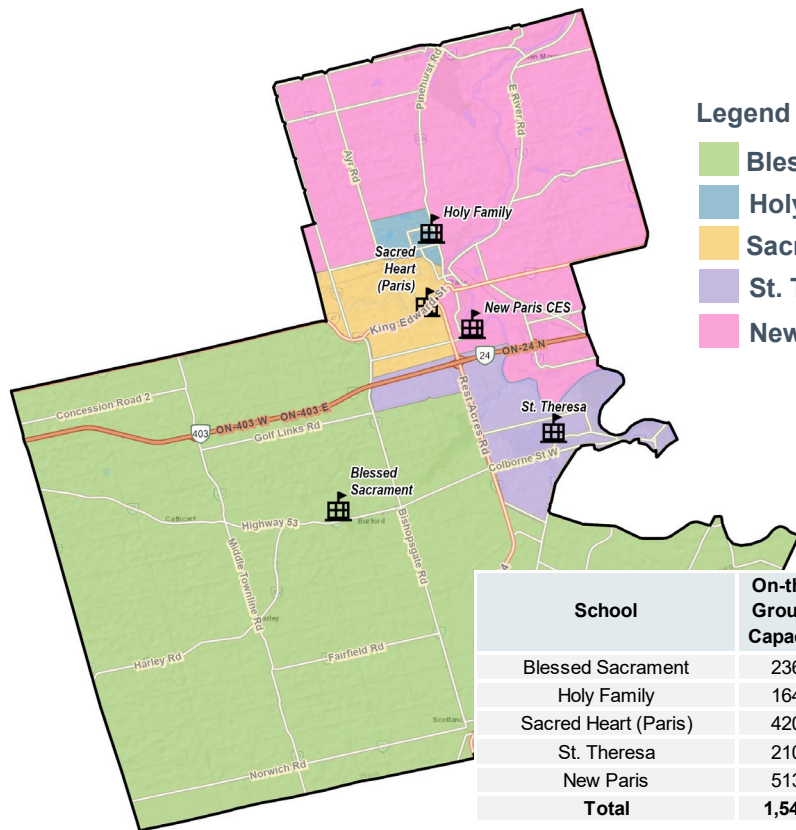
- Blessed Sacrament Boundary
- Holy Family Boundary
- Sacred Heart (Paris) Boundary
- St. Theresa Boundary
- New Paris School Boundary
- Existing Boundaries Outline



# Brant County Attendance Boundary Review

## Adjusted Idea for Consideration 1

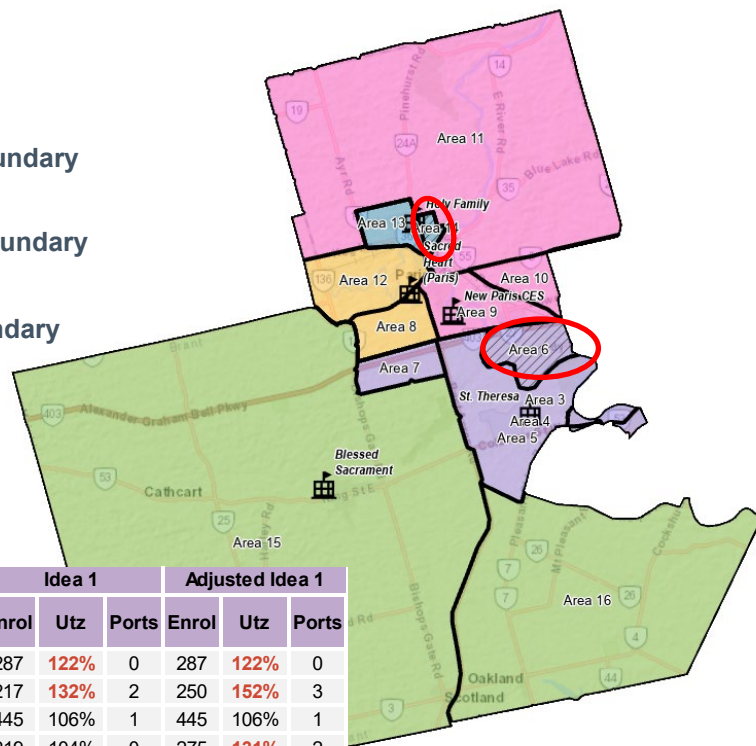
### Idea 1



### Legend

- Blessed Sacrament Boundary
- Holy Family Boundary
- Sacred Heart (Paris) Boundary
- St. Theresa Boundary
- New Paris School Boundary

### Adjusted Idea 1



School	On-the-Ground Capacity	Existing (2025/26)			Idea 1			Adjusted Idea 1		
		Enrol	Utz	Ports	Enrol	Utz	Ports	Enrol	Utz	Ports
Blessed Sacrament	236	281	119%	0	287	122%	0	287	122%	0
Holy Family	164	264	161%	3	217	132%	2	250	152%	3
Sacred Heart (Paris)	420	715	170%	12	445	106%	1	445	106%	1
St. Theresa	210	262	125%	2	219	104%	0	275	131%	2
New Paris	513	-	-	0	361	70%	0	272	53%	0
<b>Total</b>	<b>1,543</b>	<b>1,522</b>	<b>148%</b>	<b>17</b>	<b>1,529</b>	<b>99%</b>	<b>4</b>	<b>1,529</b>	<b>99%</b>	<b>6</b>



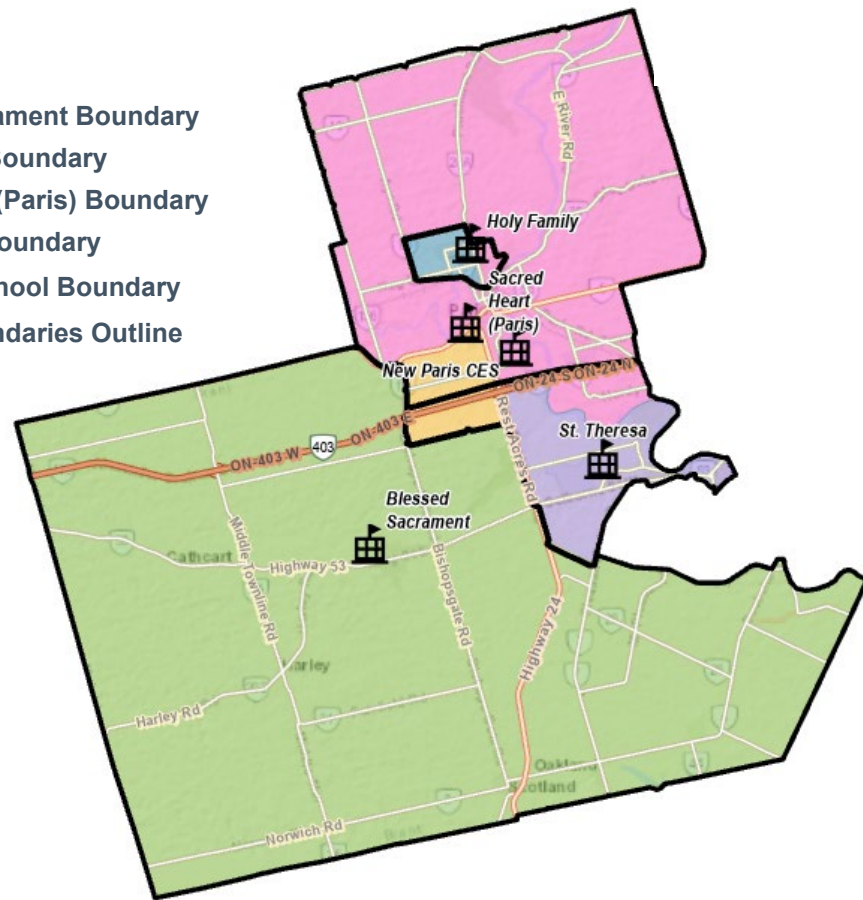
# Brant County Attendance Boundary Review

## Idea for Consideration 2 – Committee Considerations

Study Area	Existing Boundary	Proposed Boundary
Area 1	St. Theresa	St. Theresa
Area 2		
Area 3		
Area 4		
Area 5		
<b>Area 6</b>	Sacred Heart	New Paris School
<b>Area 7</b>		Sacred Heart
Area 8		
Area 9		New Paris School
Area 10		
Area 11		
Area 12	Holy Family	Holy Family
<b>Area 14</b>		New Paris School
Area 15	Blessed Sacrament	Blessed Sacrament
Area 16		

### Legend

- Blessed Sacrament Boundary
- Holy Family Boundary
- Sacred Heart (Paris) Boundary
- St. Theresa Boundary
- New Paris School Boundary
- Existing Boundaries Outline



# Brant County Attendance Boundary Review

## Adjusted Idea for Consideration 2

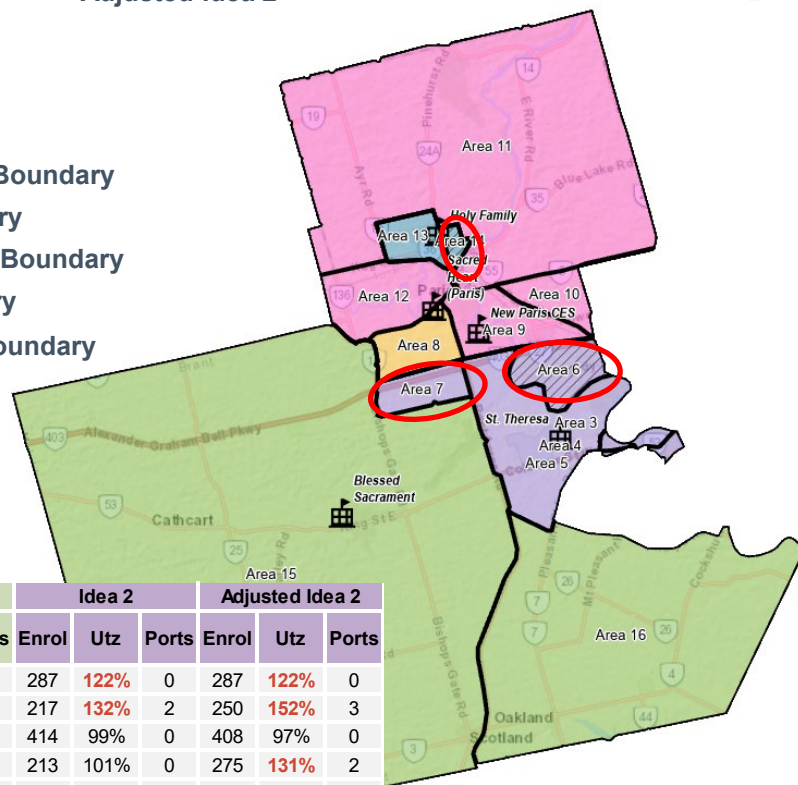
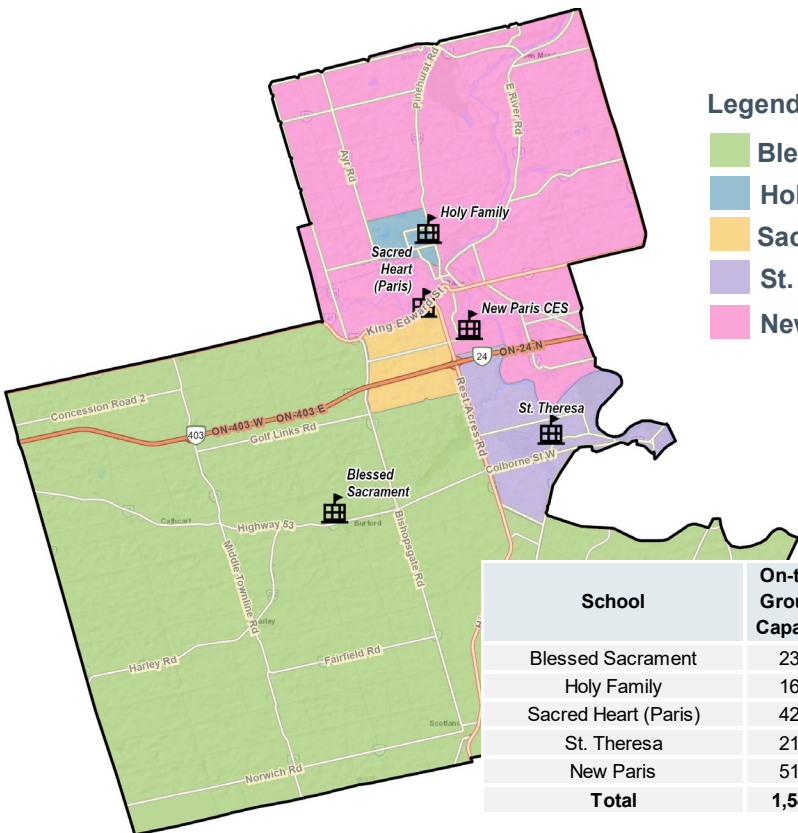
### Idea 2

### Adjusted Idea 2



#### Legend

- Blessed Sacrament Boundary
- Holy Family Boundary
- Sacred Heart (Paris) Boundary
- St. Theresa Boundary
- New Paris School Boundary



School	On-the-Ground Capacity	Existing (2025/26)			Idea 2			Adjusted Idea 2		
		Enrol	Utz	Ports	Enrol	Utz	Ports	Enrol	Utz	Ports
Blessed Sacrament	236	281	119%	0	287	122%	0	287	122%	0
Holy Family	164	264	161%	3	217	132%	2	250	152%	3
Sacred Heart (Paris)	420	715	170%	12	414	99%	0	408	97%	0
St. Theresa	210	262	125%	2	213	101%	0	275	131%	2
New Paris	513	-	-	0	398	78%	0	309	60%	0
<b>Total</b>	<b>1,543</b>	<b>1,522</b>	<b>148%</b>	<b>17</b>	<b>1,529</b>	<b>99%</b>	<b>2</b>	<b>1,529</b>	<b>99%</b>	<b>5</b>

# Key Questions



- **Would the committee consider it appropriate to align the school boundaries with the City of Brantford municipal boundary, even if this may impact the new Paris elementary school (i.e. low enrolment)?**
  - **(Areas 6, 9, and 10)**
- **Which ideas for consideration should be presented to the public?**

## Next Steps



- Committee members to complete short survey regarding the third committee meeting and perspectives on the preliminary ideas for consideration (online)
- Committee members can submit questions or comments to [brantcounty@bhncdsb.ca](mailto:brantcounty@bhncdsb.ca)
- Next Committee meeting: TBD
- Public meeting: January 26, 2026
- Prepare and present final options to Trustees for approval in Spring 2026



# QUESTIONS