



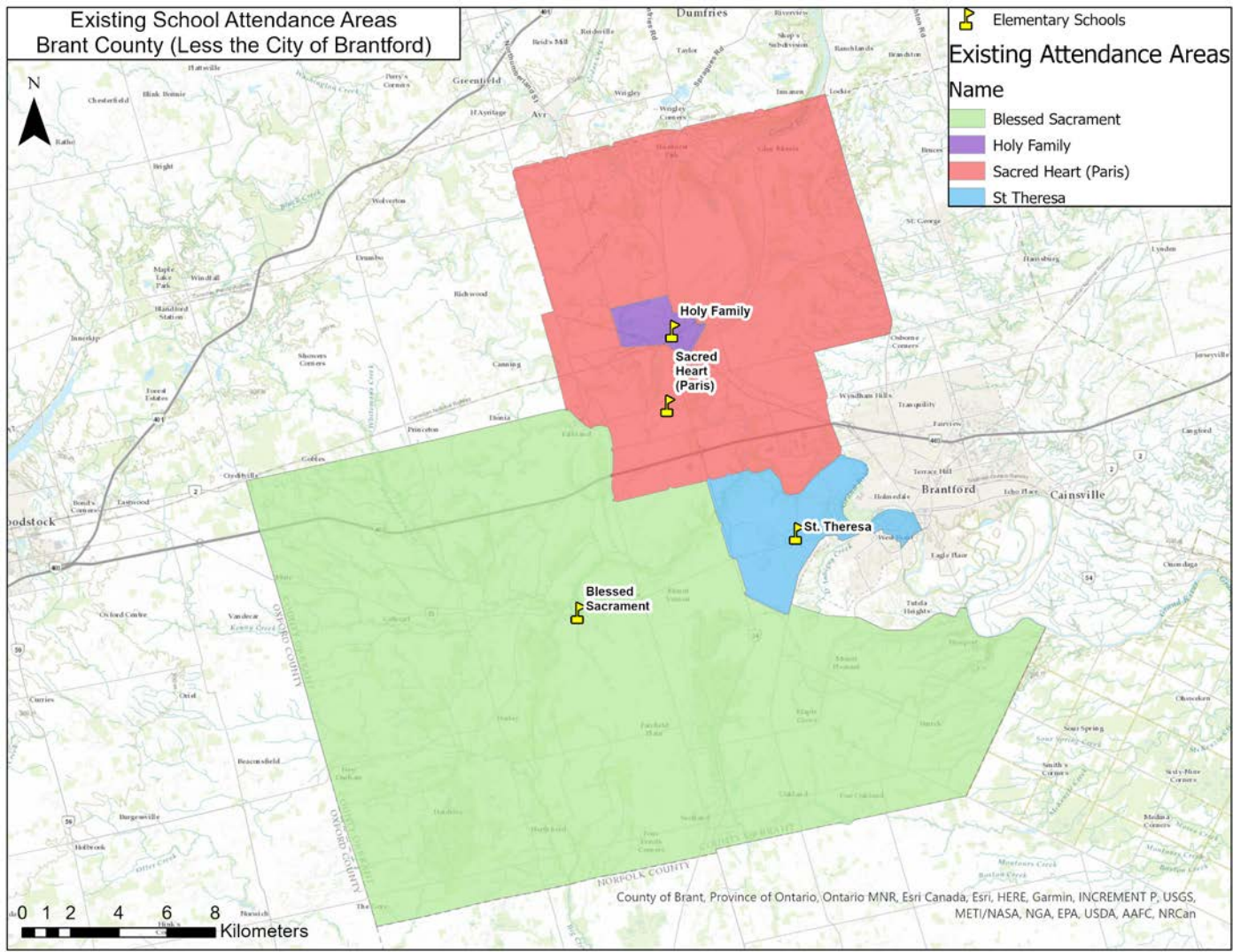
Brant County Attendance Boundary Review: Committee Recommendation

Brant Haldimand Norfolk Catholic District School Board
December 12th, 2023

Existing School Attendance Areas Brant County (Less the City of Brantford)

Existing Attendance Areas

- Name
- Blessed Sacrament
 - Holy Family
 - Sacred Heart (Paris)
 - St. Theresa



Map of Existing Attendance Boundaries

County of Brant, Province of Ontario, Ontario MNR, Esri Canada, Esri, HERE, Garmin, INCREMENT P, USGS, METI/NASA, NGA, EPA, USDA, AAFC, NRCan

Current Situation

Historical and Projected Enrolments and Utilizations



School Name	On-The-Ground Capacity	Historical				Current		Projected	
		2011/ 2012	2016/ 2017	2020/ 2021	2021/ 2022	2022/ 2023	2023/ 2024	2027/ 2028	2032/ 2033
Blessed Sacrament	236	142	183	227	230	257	263	297	276
Holy Family	164	152	138	198	202	218	228	295	382
Sacred Heart (Paris)	420	203	276	405	477	558	632	830	1,026
St. Theresa	210	152	173	167	176	189	201	185	172
Total	1,030	649	770	997	1,085	1,222	1,324	1,606	1,855

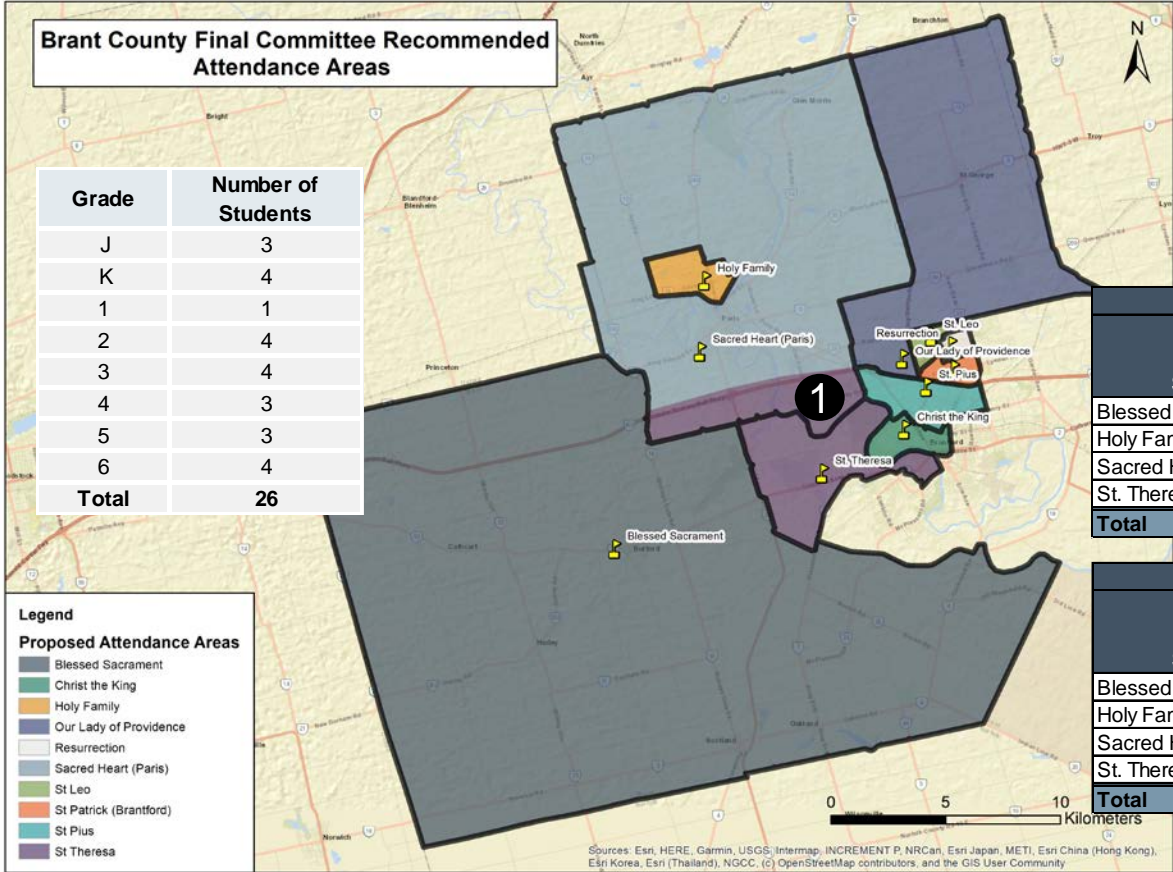
School Name	On-The-Ground Capacity	Historical				Current		Projected	
		2011/ 2012	2016/ 2017	2020/ 2021	2021/ 2022	2022/ 2023	2023/ 2024	2027/ 2028	2032/ 2033
Blessed Sacrament	236	60%	78%	96%	97%	109%	111%	126%	117%
Holy Family	164	93%	84%	121%	123%	133%	139%	180%	233%
Sacred Heart (Paris)	420	48%	66%	96%	114%	133%	150%	198%	244%
St. Theresa	210	72%	82%	80%	84%	90%	96%	88%	82%
Total	1,030	63%	75%	97%	105%	119%	129%	156%	180%

Final Committee Recommended Option: Minor Boundary Change



Brant County Final Committee Recommended Attendance Areas

Grade	Number of Students
J	3
K	4
1	1
2	4
3	4
4	3
5	3
6	4
Total	26



1

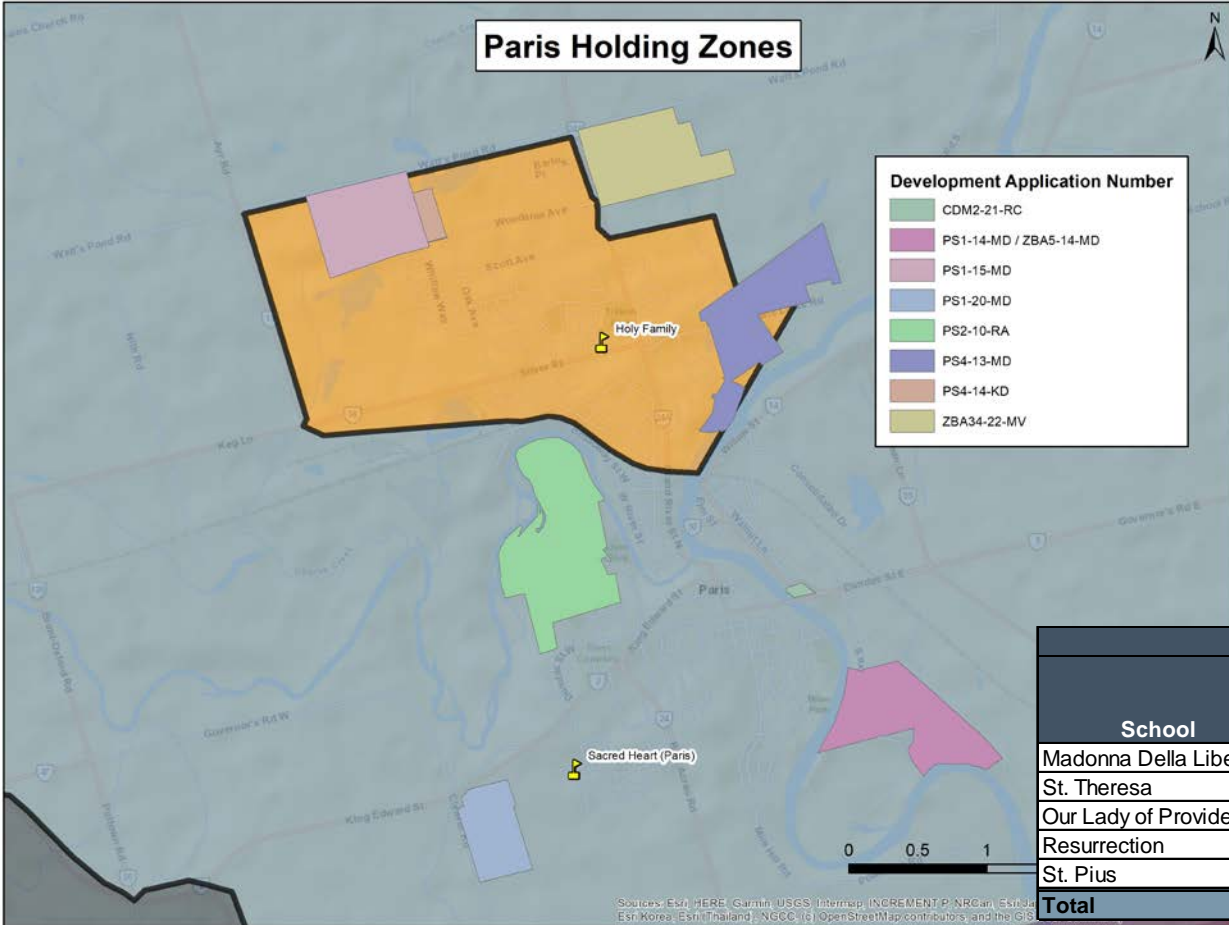
Extend St. Theresa's catchment into Sacred Heart's, moving approximately 26 students currently in Grades JK-6 from Sacred Heart to St. Theresa. *This assumes legacy provisions for students currently in Grade 7 at Sacred Heart.*

Current Conditions					
School	OTG	2023 Enrolment	Utilization	Surplus Spaces	# of Portables (2023)
Blessed Sacrament	236	263	111%	-27	0
Holy Family	164	228	139%	-64	3
Sacred Heart (Paris)	420	632	150%	-212	12
St. Theresa	210	201	96%	9	1
Total	1,030	1,324	129%	-294	16

Proposed Conditions					
School	OTG	2023 Enrolment	Utilization	Surplus Spaces	# of Portables (2023)
Blessed Sacrament	236	263	111%	-27	0
Holy Family	164	228	139%	-64	3
Sacred Heart (Paris)	420	606	144%	-186	11
St. Theresa	210	227	108%	-17	1
Total	1,030	1,324	129%	-294	15

Sources: Esri, HERE, Garmin, USGS, Intermap, INCREMENT P, NRCan, Esri Japan, METI, Esri China (Hong Kong), Esri Korea, Esri (Thailand), NGCC, (c) OpenStreetMap contributors, and the GIS User Community

Final Committee Recommended Option: Creation Of Holding Zones



Develop holding zones where residential development is expected, 'holding' new students at schools with available space (Reg.+ FI).

Application Number	Estimated Elementary Pupil Yields	School
PS4-14-KD	6	Holy Family
PS1-20-MD	49	Sacred Heart
ZBA34-22-MV	108	Sacred Heart
PS1-15-MD	24	Holy Family
PS2-10-RA	59	Sacred Heart
CDM2-21-RC	8	Sacred Heart
PS4-13-MD	63	Holy Family
PS1-14-MD / ZBA5-14-MD	39	Sacred Heart
Total	356	-

School	Holding Schools				# of Portables (2023)
	OTG	2023 Enrolment	Utilization	Surplus Spaces	
Madonna Della Libera	466	335	72%	131	0
St. Theresa	210	201	96%	9	1
Our Lady of Providence	340	294	86%	46	0
Resurrection	187	126	67%	61	0
St. Pius	337	291	86%	46	0
Total	1,540	1,247	81%	293	1

Sources: Esri, HERE, Garmin, USGS, Intermap, INCREMENT P, NRCan, Esri Jpn, Esri Korea, Esri Thailand, NGCC (S), OpenStreetMap contributors, and the GIS User Community

QUESTIONS/COMMENTS?